

Finishing Program Overview

- Conestoga’s finishing capabilities allow our customers to simplify their shop process by eliminating the finishing of doors, mouldings, face frames, end panels and other products. Outsourcing finishing ultimately reduces VOC emissions and helps streamline throughput by minimizing the finishing bottleneck.
- Conestoga’s Cabinet System’s finishing program consists of traditional wiping stains, Truetones, Colourtones, Prism Paints, glazes, primers and topcoats. Combined, these finish options create a palette of over 1,600 unique combinations.
- Conestoga has two topcoats available: 15° (low sheen) and 40° (medium sheen). Topcoat glosses will not be custom matched.
- In addition to our standard colors, custom color matching is available for wiping stains. Consult the pricing page in this section for information on custom color charges.
- **We strongly recommend that sample doors be purchased in the desired specie, color and design prior to placing full kitchen orders. This will ensure that the chosen combination meets your expectations.**

Finishing Process

- Prior to finishing, Conestoga’s doors, drawer fronts and front frames are sanded on an automated sanding line to deliver a smooth, “finish-ready” product.
- To apply wiping stains and glazes, Conestoga uses a time-proven, hand-wiped technique which delivers more color consistency and depth than simple spray stain applications.
- Most Conestoga framing beads are designed with a slight back bevel, which allows the stain to penetrate beyond the juncture of the framing bead and panel raise. During the wiping stain process an air nozzle is used to blow stain under the framing bead, minimizing the possibility of “white line” appearing on the panel during expansion and contraction. All doors are matched to a control sample for color consistency during the staining process.

- After staining, doors and cabinet components receive a sealer and topcoat. Our sealer is a high solids material that is applied and then sanded with a fine grit sandpaper after drying. The final coat is the application of a high solids conversion varnish topcoat in either 15° or 40° sheen. Conversion varnishes provide a superior finish with exceptional clarity, resistance to moisture and excellent overall durability. Conestoga has selected the topcoat sheen that generally provides the most pleasing appearance for each finish type. However, in some cases customers do have the option of selecting an alternate topcoat sheen with no upcharge.

Finish Type	Standard Sheen	Optional Sheen
Colourtone	15°	NA
Colourtone w/glaze	15°	NA
Heirloom	15°	NA
Prism Paints	15°	NA
Truetones	40°	15°
Truetones w/glaze	15°	40°
Weathered Grain (all)	5°	15°
Wiping Stains	40°	15°
Wiping Stains w/glaze	15°	40°

- Colourtones and Prism Paints are applied using air-assisted, airless spray equipment.
- After curing, parts are inspected before being packaged for delivery to our customers.

Finishing Tolerances

- Conestoga’s finishing tolerances are designed for solid wood applications. Application of finish on plywood, veneers, decorative accent items and MDF may result in some color variation. Similarly, finishes applied by the customer may vary slightly from those products finished by Conestoga. See the DuraGuard System information in this section for loose finish purchase information. Instructions for application are also published in this section and enclosed with DuraGuard finish orders.
- Conestoga cannot predict how a door or cabinet part will accept finish. Therefore, if a piece meets our material specification standards in its unfinished state, it will be considered acceptable after finishing as well.

Finishing Warranties

- Conestoga's finishes carry a one year limited warranty against peeling or blistering, but no warranty against discoloration. Conestoga assumes no responsibility for damages or poor color match when finish is applied by the customer.
- Most wood species will naturally darken with age. Conestoga will not be held liable for the change in appearance of any product, finished or unfinished, due to this aging process.
- We strongly recommend that a sample door be ordered in the desired specie, design and finish prior to ordering a full kitchen, regardless of the finish and specie combination.
- Conestoga's finish materials are interior grade only and not intended for exterior use. Exposure to outdoor conditions will cause failure and will not be warranted.

Wiping Stains

- All Conestoga wiping stains are applied using a hand wiped application. The process provides superior grain penetration of the finish material and a greater degree of depth.
- Whiter stains such as Alpine are Not Available (X) over certain darker, high contrast species such as Mahogany or Walnut.
- Conestoga does not recommend darker finishes such as Colonial, Cordovan or Washington Cherry over light species such as Hard Maple or Soft Maple. The contrast, as well as the properties of Maple, creates a blotchy, uneven look. Therefore, these combinations are Not Recommended (NR), but can still be produced with a 20% upcharge and no warranty on color consistency.
- Because Conestoga uses wiping stains, and wiping stains penetrate into the wood grain, end grain will stain and glaze darker than other areas of the piece. This will not be considered defective.

Note: Utilizing Conestoga's End Grain Sealant Option will minimize end grain contrast.

Custom Wiping Stain Match Program Guidelines

- A representative sample of the custom color and specie to be matched must be provided along with the Custom Wiping Stain Match Form found at the end of this section. Include a Purchase Order number on the form, as a non-refundable \$250.00 net fee will be invoiced when custom stain sample is shipped to the customer. We will not begin the matching process unless a Purchase Order has been submitted. This fee applies regardless of whether the match is approved by the customer. Allow 10 business days for completion of individual color matches.
- Accompanying the custom stain sample will be a Stain Match Approval Form. If the match is acceptable, sign and return the approval form to our Finishing department and we will assign a custom color mix number. This unique finish number must be referenced each time an order is placed for the custom stain. A custom stain Design and Finishing Material Charge applies to each order.
- At times, customers submit multiple stain matches for a similar color with the intention of selecting only one match. On these occasions, a \$250.00 net matching fee will apply to the primary stain match request, and a \$100.00 net fee for each subsequent stain match requests. This reduced matching fee applies only when each of the stain colors are relatively close in appearance and submitted at the same time. Any stain not close in color to the primary submission will be invoiced at the \$250.00 net fee. If an additional stain sample is submitted at a later date, it will be invoiced at the \$250.00 net fee, regardless of whether the stain is close in color to a prior submission.
- Frequently, we receive requests for multiple species with a stain match, or to add additional species and/or glaze treatments to a previously approved stain match. When these requests are received, Conestoga will generate a hard sample of the approved custom stain on each new specie or requested glaze. A Purchase Order number must be submitted along with the request as a \$30.00 net fee per individual request will be invoiced at the time the sample is shipped to the customer. Conestoga will retain a portion of the sample to serve as a control sample to be used for future production needs.

Custom Wiping Stain Match Program Guidelines (continued)

- Custom stain mixes are kept on record as long as the finish continues to be used. If no orders for a custom stain are placed for a period of 1 year, the mix will be voided. This guarantees our customers a truly unique stain since it is matched to their exact specifications. Conestoga will only custom match wiping stains and will do so using a pigmented wiping stain.
- Conestoga offers 2 topcoat glosses, 15° and 40°, with no option to custom match glosses.
- Quarts and gallons of custom stains can be purchased. Call Customer Service for pricing.

Hand Wiped Glazes

- All Conestoga glazes are applied using a hand wiped application process to the entire surface of both the face and back of every door and all applicable cabinet parts.
- Hand applied glazing is a very subjective treatment. Each door becomes “one-of-a-kind” and unique in appearance and could vary slightly from part to part but will blend within a job. Conestoga matches every glazed part to a control sample, however, color consistency is difficult to control with glazed finishes. Some factors that influence color consistency of glazed products are door design, profiles, grain patterns, wood density, base color and pre-glaze sanding processes. Conestoga will not warrant these variations and considers them to be acceptable on hand glazed products.
- We recommend that our customers develop a document that would be read and signed by the end user indicating their understanding of the potential color issues with stain/glaze and Colourtone/glaze combinations. Such a document will help set customer expectations and protect all parties in the event of a color-based issue.
- **We strongly recommend that a sample door be ordered prior to ordering a full kitchen, regardless of the finish and specie combination.**
- Conestoga maintains strict standards for its glazing processes. With this in mind, Conestoga will not customize glaze color or glaze placement. Therefore, we offer only our standard glazing options.
- Wiping stains with glaze receive standard 15° sheen topcoat; however, 40° sheen topcoat is available but must be specified when placing order.
- Glazes significantly alter the appearance of a stain/specie combination. An attractive finish may look quite different once glazed. With this in mind, we do not recommend certain glaze/finish combinations, and some combinations are not available. See the Offering and Availability Charts in this section for details.
- Conestoga’s standard hand wiped glaze offering is available in combination with some custom finish matches. For availability of glazing over custom stains, contact our Finishing Department (717) 445-3252.

Truetones

- Conestoga’s Truetone program consists of both High and Low complexity colors.
- Low Complexity Truetones are lightly pigmented spray to color stains that include a small percentage of solids. They produce a very clean look, with minimal blotchiness. After the Truetone application a sealer and conversion varnish are applied.
- High Complexity Truetones are a selection of deep, rich colors that are achieved through a two step application process. The first step is a hand wiped custom stain that brings out the color depth and grain clarity followed by a delicate application of a low solids spray stain. After this two-step application a sealer and conversion varnish are applied.
- Truetone finishes are also available with Brown, Caramel, Onyx, Oyster and Sable glazes.
- Specie availability with Cabinet Systems includes Cherry and Hard Maple.
- Non-glazed Truetone finishes receive a 40° sheen topcoat standard; however, 15° sheen topcoat is available but must be specified when placing order.

Truetones (continued)

- Glazed Truetone finishes receive a 15° sheen topcoat standard; however, 40° sheen topcoat is available, but must be specified when placing order.
- Normal contraction and expansion of the panels may cause unfinished areas. Normally hidden by the framing bead, this visible unfinished area is known as "white line".
- Profiled areas may appear lighter in color than flat areas on both Low and High Complexity Truetones because of the color application process. The effect could be enhanced by certain profiles, such as a square framing bead, deep grooves and anywhere there is a defined change in the plane of the part. Selecting a glaze option will minimize this effect on any Truetone color.
- Truetones range in color from light to dark. Therefore, they may or may not possess the ability to disguise material variations as well as wiping stains. The use of Premium grade material will mitigate some of these variations.
- End grain will appear darker than non-end grain areas, even when a glaze is applied.
Note: Utilizing Conestoga's End Grain Sealant Option will minimize end grain contrast.

Primed Products

- Conestoga’s priming capabilities allow you to outsource the time consuming process of prepping and priming your doors, drawer fronts, mouldings and Cabinet Systems parts. Outsourcing primed products reduces VOC emissions and increases the efficiency and throughput of your finishing area.
- Conestoga offers 3 substrate materials with the Standard Primer Option:
 - ◆ Solid wood – Paint Grade Hard Maple doors and drawer fronts are available in a wide variety of designs.
 - ◆ Hybrid doors and drawer fronts – hybrid products utilize Paint Grade Hard Maple framing in combination with 48-pound density MDF center panels. All published 1/4", 3/8", 5/8" and 3/4" panel raises are available in MDF material to use in a wide variety of wood framed door and drawer front designs.
 - ◆ MDF – a 48-pound density MDF material. MDF products are limited in design options. See the Alternative Materials Section of the Custom Manual for options.
- Conestoga’s primers are post catalyzed, acid cured and compatible with many high quality topcoats. Primer is available in white, light grey, medium grey and dark grey.
- Prior to priming, the substrate is prepared to accept the coating material. Putty is applied to the joints, open-end grain, tear outs and other visible voids. The product is then hand sanded to remove excess putty and provide a smooth, uniform surface to accept the primer coat.
- Most Conestoga framing beads are designed with a slight back bevel to allow some primer material to penetrate beneath the framing bead. However, due to the high solids content of the primer itself, bridging of the primer material may occur between the panel and the framing bead on 5-piece products. Moderate bridging is not considered a defect.
- After curing, all components are inspected, individually wrapped, then packaged and shipped.
- There are many finishes available to paint residential cabinetry. While many of these products may work in combination with our primers, we recommend **only acid cured conversion varnish topcoats**. Testing for compatibility and adhesion between Conestoga’s primers and customer’s finish materials should take place on a test door prior to finishing any large items or multi-piece projects.
- Customers should scuff sand the primer using 280-grit sandpaper no more than 24 hours before applying any finish. All surfaces must receive this sanding step to achieve a mechanical bond.
- Conestoga’s primed products receive putty prior to application of primer. Smaller voids will become apparent after the primer has been applied. These voids are acceptable and will require a second application of putty by the customer prior to painting.
- Conestoga’s primed products are subject to some natural grain raise during the priming process, which is not considered defective. Normal sanding preparation for topcoat application will remove these wood fibers.
- Conestoga’s primed products are manufactured using substrate materials that will expand and contract with fluctuations in climate, temperature and humidity. The movement of the substrate may cause fracturing anywhere sub-components have been joined together.
- This fracturing is not considered defective and will most likely occur in the following areas:
 - ◆ Framing joints – where the stiles meet the rails on the face and back of doors, 5-piece drawer fronts, wainscot panels and front frames.
Note: To reduce the chance of joint separation, Conestoga recommends using an MDF panel option for doors and drawer fronts.
 - ◆ Edge profiles – in both mitered and mortise and tenon joint construction at the exterior edges of the product.
 - ◆ Center panels – where the panel recesses into the framing. Bridging of the coating materials can occur between the panel and framing. Natural expansion and contraction of the substrate may fracture the bridging.

Primed Products (continued)

- ◆ Panel face – where individual adjacent staves in the panel expand and contract at different rates causing minor offsets or highlighting of glue joints. Because the individual staves of the panel continue to contract and expand, lines may appear on solid wood panels and offsets may develop from one stave to another. These will not be considered defective.

Note: To eliminate stave offsets, Conestoga recommends using an MDF panel option for doors and drawer fronts.

- Testing for compatibility and adhesion between Conestoga's primers and customer's finish materials should take place on a test door prior to finishing any large items or multi-piece projects. Conestoga assumes no responsibility for incorrect application of finish materials by the customer that may result in poor adhesion, color mismatch or other finish related issues. Conestoga will not warrant products due to incompatibility issues between our primers and non-DuraGuard finish materials.
- Primed products are individually wrapped, minimizing scuff marks.

Colourtones

- Colourtones are opaque finishes, similar in appearance to paint. The coatings are pigmented basecoats that must be catalyzed prior to application. Colourtones require the application of a clear coat of conversion varnish as the final coat.
- Colourtones have a high solids content, resulting in better build and lower VOC emissions.
- We recommend adding the antiquing option when Colourtones are ordered with Cherry. Characteristics common to Cherry, such as pin knots, mineral and pitch pockets will be present in finished products. Refer to the Offering and Availability Chart in this section for species, finish and glaze availability.
- Colourtones with Cabinet Systems are available on Cherry, Hard Maple, Red Oak and Soft Maple.
- All Colourtone finishes will receive a 15° topcoat.
- Veneer checking and seam separation are inherent characteristics of plywood panels and finished veneers that may appear to be cracks within the coating. These are caused by changes within the veneer and will not be considered defective.
Note: To eliminate veneer cracking, Conestoga recommends using an MDF panel option for doors and drawer fronts.
- Because Colourtones contain a high percentage of solids, certain characteristics such as joint fracturing will occur. Hairline cracks typically develop along joints on the face, back and edge profiles and can occur during normal handling or from the expansion and contraction of wood. Joint fracturing is not considered to be a defect.
- The machining of end grain or MDF on certain profiles may result in those surfaces being porous and the finish on these surfaces may not be as full as the finish on non-machined areas.
- Colourtone products are placed on drying racks after the coating application process. Small indentations or pin marks from drying racks may appear on the backs of Colourtone products and are not considered defects.
- Because the individual staves of the panel continue to contract and expand, lines may appear on solid wood panels and offsets may develop from one stave to another. These stave lines will not be considered defective.
Note: To eliminate stave offsets, Conestoga recommends using an MDF panel option for doors and drawer fronts.
- Colourtones may vary slightly from one batch to another, but will remain within a controlled color range.
- Minor flaws such as dust particles, dimples and lint are more apparent with opaque finishes than with wiping stains. The presence of small amounts of these minor occurrences will be considered acceptable.
- Coatings containing high solids are susceptible to bridging between the framing and center panel. Bridging occurs when the coating material joins the two separate surfaces together. This condition is common between multiple component products and is not considered defective. Over time, the natural expansion and contraction of wood may cause this bridging to fracture.

Colourtones (continued)

- As with most finishes, Colourtone colors will change over time due to exposure to light, pollution and chemicals. Additions or replacements to existing kitchens may not initially match finished products already in place.
- Customers interested in purchasing Colourtone finishing materials through the DuraGuard Program should reference DuraGuard Systems information found in this section for coatings pricing and availability.
- When purchasing multiple containers of loose Colourtone coating material, mix the contents of like finishes together prior to adding catalyst to achieve a consistent overall color.
- Catalyst must be added to all Colourtone finishes prior to application. The catalyzation process results in both a limited pot life and a recoat window. Mixture and application instructions are provided near the end of this section.
- Conestoga assumes no responsibility for incorrect application of DuraGuard materials by customers, which may result in poor adhesion, color mismatch or other finish related failures.
- We recommend that any topcoat other than DuraGuard products be tested for compatibility prior to application. Conestoga will not warrant products that fail due to non-compatible topcoat materials.

Prism Paints

- The Prism Paints program offers a selection of over 1,500 opaque colors. We do not recommend placing an order for a project in Prism Paints based on the color represented in the fan deck. We strongly recommend a door sample of the actual finish be ordered prior to placing an order for a complete job. Conestoga will not assume responsibility for color related issues resulting from orders being placed without first ordering a sample door.
- Prism Paint coatings are acid catalyzed, pigmented basecoats, much like the Colourtone products. These coatings require the application of a coat of clear conversion varnish.
- Prism Paints with Cabinet Systems are available on Cherry, Hard Maple, Red Oak and Soft Maple.
- All Prism Paints will receive a 15° topcoat, 40° topcoat is not available.
- Prism Paints are available on Cabinet Systems, however Prism Paints with glaze are not.
- Prism Paints are available on 14" sample chips, but not 36" sample chips. Square foot minimum apply.
- Because Prism Paints contain a high percentage of solids, certain characteristics such as joint fracturing will occur. Hairline cracks typically develop along joints on the face, back and edge profiles and can occur during normal handling or from the expansion and contraction of wood. Paint fracturing at joints is not considered to be a defect.
- The machining of end grain may result in those surfaces being porous and the finish on these surfaces may not be as full as the finish on non-machined areas.
- Products having been painted with these coatings will be placed on drying racks. Small indentations or pin marks from the drying racks may appear and will not be considered defects.
- Because the individual staves of the panel continue to contract and expand, lines may appear on solid wood panels and offsets may develop from one stave to another. These stave lines will not be considered defective.
Note: To eliminate stave offsets, an MDF panel option is recommended for doors and drawer fronts.
- Veneer checking and seam separation are inherent characteristics of plywood panels that may appear to be cracks within the coating. These cracks are caused by changes within the veneer and will not be considered defective.
Note: To eliminate veneer checking, an MDF panel option is recommended for doors and drawer fronts.

Prism Paints (continued)

- Prism Paints may vary slightly from one batch to another, but will remain within a controlled color range. To avoid color variations, order all components for a project at one time.
- Minor flaws such as dust particles, dimples and lint may be present with opaque finishes. The presence of a small quantity of these defects will be considered acceptable.
- Coatings containing high solids are susceptible to bridging between the framing and center panel. Bridging occurs when the coating material joins the two separate surfaces together. This condition is common between multiple component products and is not considered defective. Over time, the natural expansion and contraction of wood may cause this bridging to fracture.
- As with most finishes, Prism Paint colors will change over time due to exposure to light, pollution and chemicals. Additions or replacements to existing kitchens may not initially match finished products already in place.
- Customers interested in purchasing Prism Paint finishing materials through the DuraGuard Program should reference DuraGuard Systems information found in this section for coatings pricing and selection. It is strongly recommended that the paint be ordered at the same time as the finished parts to ensure an accurate color match.
- When purchasing multiple containers of loose Prism Paint coating material, mix the contents of like finishes together prior to adding catalyst to achieve a consistent overall color.
- Catalyst must be added to all Prism Paints prior to application. The catalyzation process results in both a limited pot life and a recoat window. Mixture and application instructions are provided near the end of this section.
- Conestoga assumes no responsibility for incorrect application of Prism Paint materials by customers, which may result in poor adhesion, color mismatch or other finish related failures.
- We recommend that any topcoat other than DuraGuard products be tested for compatibility prior to application. Conestoga will not warrant products that fail due to non-compatible topcoat materials.

Colourtones with Glazes

- Glazed treatments offer a distinctive appearance, significantly altering the base Colourtones color. The random nature of the glazing option ensures slight variation from one product to the next, giving a unique look to the finished kitchen.
- Each glaze possesses specific characteristics that determine the appearance of the glaze on finished doors, drawer fronts and mouldings. Caramel, Coffee, Pewter and White glazes are heavily pigmented glazes, creating a significant color change to the base Colourtone. Profiled areas where these glazes are applied develop heavy lines that outline the profile. Chai and Oyster glazes are lighter in color and intensity and produce a more subtle color change to the base Colourtone. They also produce much less of the highlighting effect in profiled areas.
- Because Cabinet Systems parts typically do not have profiled areas where glaze would hang, Cabinet Systems parts do not have a separate glaze applied. Instead, they will be finished with special Colourtones that have been tinted to match the overall color of a door that has been finished with select Colourtone and glaze combinations. The tinted Colourtones are limited in availability; selections can be found on the Cabinet Systems Finishing Pricing pages within this section.
- Tinted Colourtones blend well with the actual glazed parts (doors, drawer fronts, mouldings, etc.), but there will be some variation in the color between the parts that are actually finished with Colourtone and glaze versus the Cabinet Systems parts finished with specially tinted Colourtones. These variations will not be cause for replacement. We strongly recommend that a sample cabinet with doors be ordered and approved by your customer prior to placing an entire order.
- Colourtones parts receiving the glazed option will have slight inconsistencies in appearance. Variations, however slight, are inherent to these finish combinations. To successfully market this product, education of your production personnel, installers, sales staff, designers and clients must take place.

Colourtones with Glazes (continued)

- Characteristics of products finishes with Colourtone and glazed finishes include variations in:
 - ◆ Glaze “hang” with noticeable variations on edge profiles, panel raises and applied mouldings.
 - ◆ Absorption into end grain on framing and panel raises.
 - ◆ Highlighting of machined areas which normally do not appear with typical wiping stains or base Colourtone colors.
 - ◆ Appearance of blotches and rag marks.
- Components finished with Colourtones and glazes will remain within a controlled range of color; however, individual pieces will vary slightly. This includes doors finished with a Colourtone and glaze compared to Cabinet Systems parts finished with non-glazed tinted Colourtones.
- As with any Colourtone product, we do not recommend ordering plywood panel doors or other veneered panel products due to the inherent cracking and checking that takes place in veneers. Veneer checking will not be considered a finishing defect.
Note: To eliminate veneer checking and cracking, Conestoga recommends using a MDF center panel option for doors and drawer fronts.
- Use of glazes on mitered and applied moulding products will greatly enhance any offset that may be present in the joint construction.
- The machining of end grain on certain profiles may result in those surfaces being porous and the finish on these surfaces may not be as full as the finish on non-end grain areas. This will also cause the glaze to be heavier on these end grain surfaces and are not considered to be defective.
- MDF doors finished with Colourtones and glazes will have noticeable variations in glaze hang and absorption on profiled areas. Machined areas may contain small pinholes that are highlighted by the glaze and will not be considered defects.

Customer Responsibilities

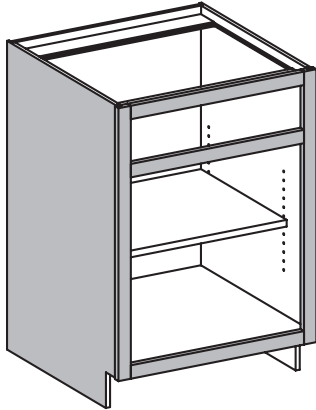
- All sample doors and swatches should be properly labeled with species, finish color, date and sales order number.
- Sample doors and swatches should be stored in such a manner that they are not exposed to light or extreme heat for an extended period of time. Exposure to sunlight, indoor lighting or extreme heat will cause samples to discolor and they will no longer be an accurate representation of color. Sample swatches should be discarded and replaced when their expiration date is reached.
- **Sample doors and swatches should be replaced every 12 months or when they become discolored.** Cherry will need to be replaced more frequently than other species. Conestoga cannot guarantee that a current order will match a sample more than 12 months old. Jobs sold from a sample swatch older than one year will not be warranted for color match.
- We strongly recommend that a full kitchen **not be sold from a color swatch or fan pack.** Order a sample door to show a greater array of possible character effects on a particular color, design and specie combination.
- For displays that are older than one year or that may be discolored, we recommend that customers obtain a current sample door in that specie, stain and glaze combination. Remember, display kitchens do change color due to their exposure to natural light, indoor lighting, heat and other conditions. The change that takes place is very gradual and may be difficult to detect, especially if viewed daily.
- If a job is ordered based on the color of a sample door or display, make sure the sample is less than one year old and the color is accurate. Customers asking for replacements because the job does not match their sample will be asked to provide the original sample sales order number so the age of the sample may be determined. **Conestoga will not warrant products for color mismatch if the sample is more than 12 months old or is discolored due to excessive exposure.**
- Due to the complexity of our offering and our inability to predict a customer's ordering habits, it is possible to receive parts that have been finished with the special tinted Colourtone and others that have been finished in Colourtone with a hand wiped glaze applied. While these parts should blend together well, there will be variation between these parts due to the differences in finish applications. These variations will not be cause for replacement.
- All Colourtone finishes are available on custom front frames, while Cabinet Systems have a limited finish offering. For instance, custom front frames are available with brushed glaze, but Cabinet Systems components are not. To attain a finish combination that is not available in Cabinet Systems, order a cabinet with no front frame and no finish. Then order a loose custom front frame sized for the cabinet and end skins, veneers or door end panels (to apply to any exposed areas) in the custom finish.

Finish Options

Cabinet Systems offers three finishing configurations for our cabinet parts - Exterior, Interior and Back - to give customers greater design flexibility. See diagrams below for listing of which pieces get finished with each configuration.

When filling out the order forms, the finish specified on Cabinet Systems Order Form #7 will be considered the standard and applied to all three options when matching interior is ordered. To order a different finish for the Interior or Back of a cabinet with Matching Interior, note the area with the finish on Cabinet Systems Order Form #7-A in the Special Instructions area per cabinet.

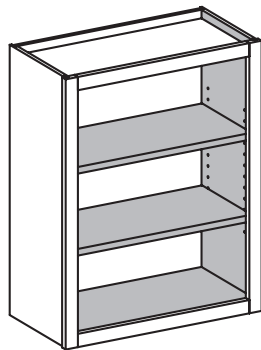
Exterior Finishing



Includes:

- Front Frame – face, interior and exterior edges, finish only on exposed edge on back of front frame.
- Exposed/flush sides – face only.

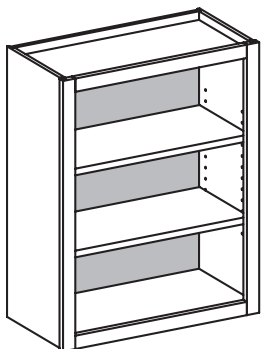
Interior Finishing (Only available with matching interiors)



Includes:

- Sides – 1 interior face.
- Top and Bottom – 1 interior face.
- Fixed Floor – 2 faces.
- Shelves – 2 faces, edgebanded edges.
- Any other matching interior components.

Back Finishing (Only available with matching interiors)

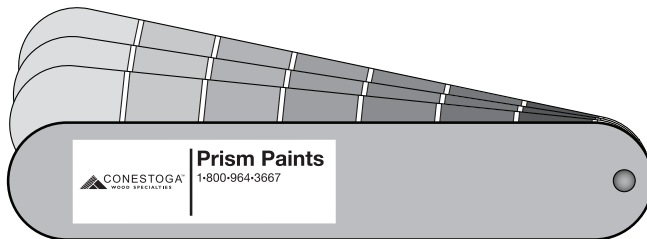


Includes:

- Backs – 1 interior face.
- Back Slants – 1 interior face.

Prism Paint Fan Deck

- Over 1,500 colors are showcased in this comprehensive fan deck.
- Divided into five sections: Colors, Neutrals, Whites & Pastel, Timeless and Historic.
- All paints are interior grade only, including the Historic Exterior Section.
- Each paint color is classified as either a Pastel or Deeptone. This determines the material cost category when finishing is requested, or loose paints are selected.
- Refer to the Conestoga website, www.conestogawood.com for a complete listing of paint colors and price categories.
- Prism Paints are available with Caramel, Chai, Coffee, Oyster and Pewter glaze options.
- Order Prism Paint fan decks using part #2602036A.
- \$20.00 net per fan deck.



Offering and Availability

Colourtones on Cabinet Systems										
	Antique White	Arctic White	Cadet Grey	Chesapeake	Crystal White	Designer White	Ebony*	Frosty White	Gunsmoke	Hearthstone Grey
Cherry										
No Glaze	NR	NR	R	NR	NR	NR	R	NR	R	R
Caramel	X	X	X	NR†	X	X	X	X	X	X
Chai	X	X	X	X	NR†	X	X	NR†	X	X
Coffee	X	X	X	X	NR†	X	X	NR†	X	X
Oyster	X	X	X	X	NR†	X	X	NR†	X	X
Pewter	X	X	X	X	NR†	NR†	X	NR†	X	X
Maple, Hard										
No Glaze	R	R	R	R	R	R	R	R	R	R
Caramel	X	X	X	R†	X	X	X	X	X	X
Chai	X	X	X	X	R†	X	X	R†	X	X
Coffee	X	X	X	X	R†	X	X	R†	X	X
Oyster	X	X	X	X	R†	X	X	R†	X	X
Pewter	X	X	X	X	R†	R†	X	R†	X	X
Maple, Soft (cabinet parts only)										
No Glaze	R	R	R	R	R	R	R	R	R	R
Caramel	X	X	X	R†	X	X	X	X	X	X
Chai	X	X	X	X	R†	X	X	R†	X	X
Coffee	X	X	X	X	R†	X	X	R†	X	X
Oyster	X	X	X	X	R†	X	X	R†	X	X
Pewter	X	X	X	X	R†	R†	X	R†	X	X
Paint Grade Hard Maple (doors only)										
No Glaze	R	R	R	R	R	R	R	R	R	R
Caramel	X	X	X	R†	X	X	X	X	X	X
Chai	X	X	X	X	R†	X	X	R†	X	X
Coffee	X	X	X	X	R†	X	X	R†	X	X
Oyster	X	X	X	X	R†	X	X	R†	X	X
Pewter	X	X	X	X	R†	R†	X	R†	X	X
Oak, Red										
No Glaze	R	R	R	R	R	R	R	R	R	R
Caramel	X	X	X	X	X	X	X	X	X	X
Chai	X	X	X	X	X	X	X	X	X	X
Coffee	X	X	X	X	X	X	X	X	X	X
Oyster	X	X	X	X	X	X	X	X	X	X
Pewter	X	X	X	X	X	X	X	X	X	X

* Ebony Colourtones will magnify any small imperfection. Small imperfections such as dust or lint will not be considered defects.
 † Doors, drawer fronts, mouldings and other Custom Products will be finished with Colourtone and glaze. Cabinet Systems parts will be finished with a Colourtone that has been tinted to match the overall color of those parts.

Standard Primer Only	
Cherry	R
Maple, Hard	R
Maple, Soft	R
Paint Grade Hard Maple	R
Oak, Red	R

Using Offering and Availability Charts

Offering and Availability Charts should be referenced prior to placing an order.

- Locate the desired finish in the top row, then follow the row down to the desired specie/glaze combination found along the left column of the chart.
- The box where the finish, specie and glaze combination intersects will contain one of the following references:

R = Recommended: These finish combinations refer only to the consistency of the finish application and not the aesthetic beauty of the combination.

NR = Not Recommended: These finish combinations are problematic and do not meet Conestoga's standards for color consistency. They also highlight various other characteristics such as machine marks and open end grain that will not be considered defective. NR combinations will receive a 20% upcharge to the Design Charge compensating for additional labor required for difficult combinations. Even if a sample door is purchased, we cannot guarantee that the next order will be an exact match to the sample door. Conestoga will not guarantee color consistency on NR combinations.

X = Not Available: Such combinations present application challenges which result in finish appearances Conestoga cannot consistently reproduce, and are not available.

Offering and Availability

Colourtones				
	Heron	Marina	Metropolitan Grey	Regent Blue
Cherry				
No Glaze	R	NR	R	NR
Caramel	X	X	X	X
Chai	X	X	X	X
Coffee	X	X	X	X
Oyster	X	X	X	X
Pewter	X	X	X	X
Maple, Hard				
No Glaze	R	R	R	R
Caramel	X	X	X	X
Chai	X	X	X	X
Coffee	X	X	X	X
Oyster	X	X	X	X
Pewter	X	X	X	X
Maple, Soft (cabinet parts only)				
No Glaze	R	R	R	R
Caramel	X	X	X	X
Chai	X	X	X	X
Coffee	X	X	X	X
Oyster	X	X	X	X
Pewter	X	X	X	X
Paint Grade Hard Maple (doors only)				
No Glaze	R	R	R	R
Caramel	X	X	X	X
Chai	X	X	X	X
Coffee	X	X	X	X
Oyster	X	X	X	X
Pewter	X	X	X	X
Oak, Red				
No Glaze	R	R	R	R
Caramel	X	X	X	X
Chai	X	X	X	X
Coffee	X	X	X	X
Oyster	X	X	X	X
Pewter	X	X	X	X

R = Recommended: These finish combinations refer only to the consistency of the finish application and not the aesthetic beauty of the combination.

NR = Not Recommended: These finish combinations are problematic and do not meet Conestoga's standards for color consistency. They also highlight various other characteristics such as machine marks and open end grain that will not be considered defective. NR combinations will receive a 20% upcharge to the Design Charge compensating for additional labor required for difficult combinations. Even if a sample door is purchased, we cannot guarantee that the next order will be an exact match to the sample door. Conestoga will not guarantee color consistency on NR combinations.

X = Not Available: Such combinations present application challenges which result in finish appearances Conestoga cannot consistently reproduce, and are not available.

Offering and Availability

Wiping Stains									
	Alpine	Autumn	Bordeaux	Chestnut	Colonial	Cordovan	Dark Roast	Driftwood	Espresso
Cherry									
No Glaze	X	R	R	R	R	R	R	R	R
Brown	X	R	X	R	R	R	R	R	X
Caramel	X	R	X	R	R	R	R	R	X
Pewter	X	R	X	R	R	R	R	R	X
Sable & Onyx	X	R	R	R	R	R	R	R	R
White	X	NR	X	X	X	X	X	R	X
Maple, Hard									
No Glaze	R	R	NR	NR	NR	NR	NR	R	NR
Brown	X	R	X	NR	NR	NR	NR	R	X
Caramel	X	R	X	NR	NR	NR	NR	R	X
Pewter	NR	R	X	NR	NR	NR	NR	R	X
Sable & Onyx	X	NR	NR	NR	NR	NR	NR	R	NR
White	R	R	X	X	X	X	X	R	X
Maple, Soft									
No Glaze	R	R	NR	NR	NR	NR	NR	R	NR
Brown	X	R	X	NR	NR	NR	NR	R	X
Caramel	X	R	X	NR	NR	NR	NR	R	X
Pewter	X	R	X	NR	NR	NR	NR	R	X
Sable & Onyx	X	NR	NR	NR	NR	NR	NR	R	NR
White	R	R	X	X	X	X	X	R	X
Oak, Red									
No Glaze	R	R	R	R	R	R	R	R	R
Brown	X	R	X	R	R	R	R	R	X
Caramel	X	R	X	R	R	R	R	R	X
Pewter	NR	R	X	R	R	R	R	R	X
Sable & Onyx	X	R	R	R	R	R	R	R	R
White	R	R	X	X	X	X	X	R	X

Truetones							
	Ashen	Cocoa	Desert Sand	English Toffee	Seaside	Shale	Sienna
Cherry							
No Glaze	R	R	R	R	R	R	R
Brown	R	R	R	R	R	R	R
Caramel	R	R	R	R	R	R	R
Oyster	R	R	R	R	R	R	R
Sable	R	R	R	R	R	R	R
Maple, Hard							
No Glaze	R	R	R	R	R	R	R
Brown	R	R	R	R	R	R	R
Caramel	R	R	R	R	R	R	R
Oyster	R	R	R	R	R	R	R
Sable	R	R	R	R	R	R	R

R = Recommended: These finish combinations refer only to the consistency of the finish application and not the aesthetic beauty of the combination.

NR = Not Recommended: These finish combinations are problematic and do not meet Conestoga's standards for color consistency. They also highlight various other characteristics such as machine marks and open end grain that will not be considered defective. NR combinations will receive a 20% upcharge to the Design Charge compensating for additional labor required for difficult combinations. Even if a sample door is purchased, we cannot guarantee that the next order will be an exact match to the sample door. Conestoga will not guarantee color consistency on NR combinations.

X = Not Available: Such combinations present application challenges which result in finish appearances Conestoga cannot consistently reproduce, and are not available.

Offering and Availability

Wiping Stains										
	Ginger	Harvest Gold	Honey	Natural	Nickel	Nitefall	Nutmeg	Portabella	Saddle	Washington Cherry
Cherry										
No Glaze	R	R	R	R	R	R	R	R	R	R
Brown	R	R	R	R	R	X	R	R	R	R
Caramel	R	R	R	R	R	X	R	R	R	R
Pewter	R	R	R	R	R	X	NR	R	R	R
Sable & Onyx	R	R	R	R	R	R	X	R	R	R
White	NR	NR	X	NR	R	X	X	R	X	X
Maple, Hard										
No Glaze	R	R	NR	R	R	NR	R	NR	NR	NR
Brown	R	R	NR	R	R	X	R	NR	NR	NR
Caramel	R	R	NR	R	R	X	R	NR	NR	NR
Pewter	R	R	NR	R	R	X	NR	NR	NR	NR
Sable & Onyx	R	R	NR	X	R	NR	X	NR	NR	NR
White	R	R	X	R	R	X	R	R	X	X
Maple, Soft										
No Glaze	R	R	NR	R	R	NR	R	NR	NR	NR
Brown	R	R	NR	R	R	X	R	NR	NR	NR
Caramel	R	R	NR	R	R	X	R	NR	NR	NR
Pewter	R	R	NR	R	R	X	NR	NR	NR	NR
Sable & Onyx	R	R	NR	X	R	NR	X	NR	NR	NR
White	R	R	X	R	R	X	R	R	X	X
Oak, Red										
No Glaze	R	R	R	R	R	R	R	R	R	R
Brown	R	R	R	R	R	X	R	R	R	R
Caramel	R	R	R	R	R	X	R	R	R	R
Pewter	R	R	R	NR	R	X	NR	R	R	R
Sable & Onyx	R	R	R	R	R	R	X	R	R	R
White	R	R	X	R	R	X	R	R	X	X

R = Recommended: These finish combinations refer only to the consistency of the finish application and not the aesthetic beauty of the combination.

NR = Not Recommended: These finish combinations are problematic and do not meet Conestoga's standards for color consistency. They also highlight various other characteristics such as machine marks and open end grain that will not be considered defective. NR combinations will receive a 20% upcharge to the Design Charge compensating for additional labor required for difficult combinations. Even if a sample door is purchased, we cannot guarantee that the next order will be an exact match to the sample door. Conestoga will not guarantee color consistency on NR combinations.

X = Not Available: Such combinations present application challenges which result in finish appearances Conestoga cannot consistently reproduce, and are not available.

Custom Finishing Pricing

Design and Material Charges for Cabinet Systems Finishing			
Finish Category	Design Charge	Material Charge per sq. ft.	
Natural Finish	\$6.00	\$2.90	
Wiping stain, Low Complexity	8.00	4.25	
Wiping stain, High Complexity	9.00	6.00	
Truetones, Low Complexity	9.00	4.25	
Truetones, High Complexity	13.95	9.90	
Colourtones (on wood)	11.75	7.00	
Colourtones (on hybrid* & MDF) - doors only	13.00	7.00	
Primer - standard white (on wood)	10.50	5.80	
Primer - standard white (on hybrid* & MDF) - doors only	11.75	5.80	
Primer - standard light, medium & dark grey (on wood)	10.75	6.60	
Primer - standard light, medium & dark grey (on hybrid* & MDF) - doors only	12.00	6.60	
Prism Paints - pastels (on wood)	12.75	17.20	
Prism Paints - deeptones (on wood)	12.75	19.40	
Prism Paints - pastels (on hybrid* & MDF) - doors only	14.25	17.20	
Prism Paints - deeptones (on hybrid*, MDF) - doors only	14.25	19.40	
Finish Options			
Handwiped glazes	\$6.00	\$2.45	
Custom Wiping Stain Match (Initial match charge is \$200.00 net)			
Custom Wiping Stain	Low Complexity	\$10.25	\$5.50
	High Complexity	10.25	7.80
Finish Complexity/Color Selection			
Natural Finish	Clear sealer and topcoat		
Wiping Stains	Low Complexity	Autumn, Colonial, Ginger, Harvest Gold, Honey, Nutmeg, Portabella, Saddle, Washington Cherry	
	High Complexity	Alpine, Bordeaux, Chestnut, Cordovan, Dark Roast, Driftwood, Espresso, Nickel, Nitefall	
Truetones	Low Complexity	Desert Sand, English Toffee, Sienna	
	High Complexity	Ashen, Cocoa, Seaside, Shale	
Colourtones	Antique White, Arctic White, Cadet Grey, Chesapeake, Crystal White, Designer White, Ebony, Frosty White, Gunsmoke, Hearthstone Grey, Heron, Marina, Metropolitan Grey, Regent Blue		
Tinted Colourtones	Chesapeake w/Caramel glaze, Crystal White w/Chai glaze, Crystal White w/Coffee glaze, Crystal White w/Oyster glaze, Crystal White w/Pewter glaze, Designer White w/Pewter, Frosty White w/Chai glaze, Frosty White w/Coffee glaze, Frosty White w/Oyster, Frosty White w/Pewter		
Glazes (Stains)	Brown, Caramel, Pewter, Sable, White		
Glazes (Colourtones)	Caramel, Chai, Coffee, Oyster, Onyx, Pewter, White		

There will be a \$35.00 net surcharge for pastel finishes and a \$42.00 net surcharge for deeptone and energetic bright finishes on orders under 10 square feet.

*Hybrid door features MDF panel and solid wood framing.

Cabinet Systems Finishing Pricing

Ancillary Products Finishing Pricing		
Product	Design Charge multiplier	Material Charge
Front Frames	1 opening 2-3 openings 4-5 openings 6-7 openings 8+ openings	1x 1.5x 2x 2.5x 3x
		$\frac{\text{Front Frame Perimeter} \times 4}{144}$ actual square footage (3 sq. ft. min.)
Plywood/Solid Wood Parts (sides, backs, shelves, tops, bottoms and toe boards)	1x	actual sq. footage \div 2
8 foot linear mouldings (face only)	1x	2 sq. ft.
8 foot linear mouldings (face and back)	2x	5 sq. ft.
Assembled mouldings	2x	5 sq. ft.
Conestoga entry level range hoods 30", 36"	3x	6 sq. ft.
Valances, fillers, fluted fillers (finished on face and sides only)	1x	actual sq. footage
Plywood panels 1/8", 1/4", 3/4"	1x	actual sq. footage \div 2

*1/8" Plywood panels only available finished on face only.

Custom/Cabinet Systems Finish Offering

Finish and Specie Availability			
Finish Availability	Custom Front Frames	Cabinet Systems	End skins/Veneers
Stain/Stain & glaze/Truetones	yes	yes	yes
Colourtone finish w/no glaze	yes	yes	yes
Colourtone w/glaze	yes	no	yes
Chesapeake w/Caramel, Crystal White w/Chai, Crystal White w/Coffee, Crystal White w/Oyster, Crystal White w/Pewter, Designer White w/Pewter, Frosty White w/Chai, Frosty White w/Coffee, Frosty White w/Oyster, Frosty White w/Pewter	yes – Colourtone w/hand wiped glaze	yes – Tinted Colourtone	yes – Tinted Colourtone
Primer only	yes	yes	yes
Wear sanding/Antiquing	no	no	no
Distressing level 1, 2 & 3	yes	yes	no
Heirloom/Brushed glaze	yes	no	yes
Specie Availability w/Colourtones	Custom Front Frames	Cabinet Systems	End skins/Veneers
Cherry	yes	yes	yes
Hard Maple	yes	yes	yes
Soft Maple	no*	yes	no
Red Oak (w/Colourtones)	yes	yes	yes
Red Oak (w/Colourtones & glazes)	yes	no	yes
Specie Availability w/Prism Paints	Custom Front Frames	Cabinet Systems	End skins/Veneers
Hard Maple	yes	yes	yes
Soft Maple	yes	yes	yes

*Soft Maple front frames are not available in Colourtone or Prism Paint finishes on Cabinet Systems orders when the pre-fit or beaded option is selected.

Finish Sample Kits

Cherry	Maple, Hard	Oak	Truetones	
Stain/Glaze	Stain/Glaze	Stain/Glaze	Stain/Glaze	Stain/Glaze
Autumn	Autumn/Brown	Oak, Red	Cherry	Walnut
Bordeaux	Bordeaux	Autumn	Ashen/Sable	Ashen
Bordeaux/Sable	Bordeaux/Sable	Chestnut	Cocoa	Seaside
Chestnut	Chestnut	Chestnut /Onyx	Desert Sand	Shale
Chestnut/Sable	Colonial	Dark Roast	Seaside	
Colonial	Cordovan	Espresso	Shale/Sable	
Colonial/Sable	Dark Roast	Harvest Gold	Maple, Hard	
Cordovan	Dark Roast/Sable	Honey	Ashen	
Cordovan/Sable	Driftwood	Honey/Sable	Ashen/Brown	
Dark Roast	Driftwood/Onyx	Natural	Cocoa/Sable	
Driftwood	Espresso	Natural/Caramel	Desert Sand	
Espresso	Espresso/Sable	Nutmeg	English Toffee	
Ginger/Onyx	Ginger	Portabella/Brown	Seaside	
Harvest Gold	Harvest Gold	Saddle	Shale	
Harvest Gold/Sable	Honey	Oak, White	Shale/Onyx	
Honey	Honey/Sable	Alpine/White	Shale/Oyster	
Honey/Sable	Natural	Autumn	Shale/Sable	
Natural	Natural/Brown	Colonial	Sienna	
Natural/ Sable	Nickel	Colonial/Onyx	Oak, White	
Nickel	Nickel/Pewter	Driftwood	Ashen	
Nickel/Brown	Nickel/White	Driftwood/Sable	Ashen/Brown	
Nickel/Onyx	Nitefall	Espresso	Ashen/Onyx	
Nitefall	Nutmeg	Harvest Gold	Cocoa	
Portabella	Nutmeg/Brown	Natural	Desert Sand/Onyx	
Portabella/Brown	Portabella	Natural/White	Shale	
Portabella/Pewter	Portabella/White	Nickel	Shale/Onyx	
Saddle	Saddle	Nitefall		
Saddle/Sable	Saddle/Brown			
Washington Cherry	Saddle/Onyx			
Washington Cherry/Sable	Washington Cherry			

Colourtones
Cherry
Crystal White-Antiqued
Ebony-Antiqued
Maple, Hard
Antique White
Arctic White
Arctic White/Onyx with pinstripping
Arctic White/Pewter
Cadet Grey
Cadet Grey/Onyx with pinstripping
Chesapeake
Chesapeake/Caramel
Chesapeake/Coffee
Crystal White
Crystal White/Coffee
Crystal White/Pewter
Designer White
Designer White/Pewter
Frosty White
Frosty White/Chai
Frosty White/Coffee
Frosty White/Oyster
Gunsmoke
Gunsmoke/White
Hearthstone Grey
Hearthstone Grey/Coffee
Heron
Marina
Marina/Pewter
Metropolitan Grey
Metropolitan Grey/Coffee
Regent Blue

Pricing per kit:

Wiping stain (Red Oak) and Truetone kits: \$55.00 net.
 Wiping stain (Cherry or Hard Maple) and Colourtone kits: \$65.00 net.

Specifications:

Swatch size 4-1/4" x 6-1/8".
 Swatch has G-012 groove on face – except for finishes with Chai and Oyster glazes.
 Each swatch is individually labeled and dated.
 Kits are packed in a labeled file box, reducing the need to remove individual swatches for identification; this limits the exposure to light that accelerates color change.

Larger Swatch Size

Individual Conestoga Recommended and Not Recommended finishes are available on 6-1/8"x 14" chips.
 Wiping stains and Truetones - \$15.50 net.
 Colourtones - \$17.00 net.
 Prism Paint Pastels – \$52.00 net
 Prism Paint Deeptones – \$59.00 net

Conestoga DuraGuard System Overview

DuraGuard is a complete finishing material program designed to make it easy to match Conestoga's prefinished products, in which all the wiping stains, Truetones, Colourtones, paints, glazes, primers, sealers and topcoats work together to create a lasting finish on our customer's components.

- DuraGuard provides finishing materials, step-by-step instructions, access to our in-house finishing professionals and support products such as touch up kits.
-

DuraGuard System Features

- Access to all of Conestoga's topcoats, sealers, stains, paints, primers, glazes and other raw materials.
 - Step-by-step instructions mailed with every shipment of finishing material detailing how to mix raw materials, sand the wood, apply the finish and spray the topcoat.
 - Access to our Finishing Department at (717) 445-3252 every business day, from 7:00 a.m. to 3:30 p.m. (EST). Our professionals are dedicated to answering any finishing questions our customers may have.
 - Inexpensive touch up kits are available; these kits are used to hide scratches or blemishes incurred in our customers' shop. These kits make a great gift for your satisfied customers. See bottom of DuraGuard Packaged Finish Pricing Chart in this section for details and pricing.
-

DuraGuard System Disclaimers

- Conestoga's finishes are industrial in nature, unlike finishes purchased at a retail store. Although they are of higher quality than most finishes, Conestoga's coatings are also more combustible, more volatile and require a greater level of expertise to apply.
- Due to the complexities involved with any finishing process, Conestoga will not be liable for any damages or injuries resulting from the use of this product, even if every precaution is taken by the customer. Conestoga's liability is limited to the original purchase price of the finishing material.
- In order to best match any DuraGuard finish color, it is important to follow the processes outlined in our instruction documents. These instructions are found in this section of the manual. If the proper steps are not followed, the finished product may not match the finished doors that were purchased from Conestoga. However, please bear in mind that following these procedures will not always guarantee an exact match.
- Due to the many variables involved in any finishing process, Conestoga assumes no responsibility if products finished by the customer using the DuraGuard System do not produce an exact match to prefinished products purchased from Conestoga.
- The DuraGuard Finishing System is scientifically designed so that each of the materials, from base coat to topcoat, work with one another, thereby providing a beautiful protective finish for our customer's products. Finishing products not sold by Conestoga may react unfavorably to the DuraGuard finishing materials causing poor topcoat adhesion, discoloration or other problems.

DuraGuard Packaged Finish Pricing							
Wiping Stains	Quarts	Gallons	5-Gallons	Intrigue Paints	Quarts	Gallons	5-Gallons
Alpine	\$39.00	\$105.00	\$473.00	Int Castle Grey	NA	\$160.00	\$630.00
Autumn	34.50	72.00	365.00	Int Inkwell	NA	160.00	630.00
Bordeaux	45.50	119.00	604.00	Int Khaki	NA	160.00	630.00
Chestnut	40.50	97.00	505.00	Int Naval Grey	NA	160.00	630.00
Colonial	33.50	67.00	335.00	Int Whisper	NA	160.00	630.00
Cordovan	50.50	140.00	695.00	Truetones			
Dark Roast	36.00	77.00	370.00	Desert Sand	\$44.50	\$98.00	\$355.00
Driftwood	32.00	61.00	303.00	English Toffee	35.00	74.00	258.00
Espresso	39.00	91.00	473.00	Sienna	34.50	71.00	245.00
Ginger	35.50	74.00	378.00	Truetone Spray Stains (use w/Truetone wiping stain, not included)			
Harvest Gold	33.00	64.00	318.00	Ashen and Shale	NA	\$66.00	\$218.00
Honey	34.00	68.00	341.00	Cocoa	NA	69.00	232.00
Nickel	33.00	87.00	325.00	Seaside	NA	84.00	342.00
Nitefall	32.50	84.00	312.00	Truetone Wiping Stains (use w/Truetone spray stain, not included)			
Nutmeg	35.00	71.00	358.00	Ashen	\$34.00	\$70.00	\$228.00
Portabella	34.00	67.50	292.00	Cocoa	48.00	126.00	500.00
Saddle	34.00	67.50	333.00	Seaside	39.00	88.00	329.00
Washington Cherry	35.50	75.00	385.00	Shale	36.00	78.00	270.00
Primer & Primer Catalyst				Sealer & Topcoats			
Primer – White (Catalyst 494 not included)	NA	\$97.00	\$385.00	Sealer	NA	\$78.00	\$273.00
Primer – Light Grey (Catalyst 494 not included)	NA	103.00	430.00	5° Topcoat	NA	90.00	340.00
Primer – Med Grey (Catalyst 494 not included)	NA	108.00	455.00	15° Topcoat	NA	90.00	340.00
Primer – Dark Grey (Catalyst 494 not included)	NA	114.00	490.00	40° Topcoat	NA	90.00	340.00
Catalyst 494 (use with Primer)	\$34.50	75.00	255.00	Glazes			
Colourtones				Brown	\$42.00	\$86.00	\$360.00
Antique White	NA	\$103.00	\$410.00	Caramel			
Arctic White	NA	109.00	440.00	Chai			
Cadet Grey	NA	115.00	465.00	Coffee			
Chesapeake	NA	96.00	375.00	Onyx			
Crystal White	NA	90.00	345.00	Oyster			
Designer White	NA	103.00	410.00	Pewter			
Ebony	NA	104.00	415.00	Sable			
Frosty White	NA	90.00	345.00	White			
Gunsmoke	NA	103.00	365.00	General Catalyst			
Hearthstone Grey	NA	106.00	425.00	Catalyst V66V21 (use with Prism Paints, Colourtones, sealer & topcoats)	\$42.50	\$102.00	NA
Heron	NA	113.00	455.00	DuraGuard Sanding Sponges (80 grit)	\$32.00 (pack of 10 sponges)		
Marina	NA	118.00	485.00	Touch Up Kits* (net per kit)			
Metropolitan Grey	NA	115.00	465.00	Wiping Stain, Truetone and Glaze Kits (net)			\$10.00 ea.
Regent Blue	NA	113.00	460.00	Colourtone, Prism Paint and Custom Stain Kits (net)			15.00 ea.
Prism Paints				Colourtone Aerosol Can (net)			15.00 ea.
Pastels	NA	\$160.00	\$630.00	Clear Coat Aerosol Can – Low Sheen (net)			14.50 ea.
Deeptones	NA	193.00	795.00				

Standard lead-time for stain is 3 business days for quantities of 5 gallons or less of the same material. Lead-time for order quantities over 5 gallons of any single stain, Colourtone, glaze, primer, thinner, catalyst, topcoat or sealer is 5 business days and can only be shipped via common carrier or Conestoga Wood Transportation.

Custom stain match materials and Prism Paints are mixed on a per-order basis and cannot be expedited.

Heirloom finishes utilize Colourtone and glaze materials.

***Touch up kits:** Wiping stain, Truetone, Glaze and Colourtone kits include a stain marker and fill stick. Prism Paint and Custom Stain kits include a marker and a vial of 15° sheen topcoat.

DuraGuard Finishing Instructions

All Wiping Stains (except Bordeaux, Dark Roast, Espresso, Nickel and Nitefall)

- Use this process to match all Conestoga wiping stains except Bordeaux, Dark Roast, Espresso Nickel and Nitefall stains.
- White wood sand with an oscillating palm sander using 180 grit sandpaper.
- Apply wiping stain over wood. Wipe all surfaces clean with lint-free rag.
- Allow wiping stain to dry for a minimum of 1 hour.
- Spray sealer to approximately 4 wet mil thickness.
- When the sealer is completely dry, sand sealer with fine grit (220-280) sandpaper using an oscillating palm sander on all flat surfaces. Hand sand all profiles with 220 grit sandpaper.
- Spray on topcoat to approximately 4 wet mil thickness.
- Allow topcoat to dry for a minimum of 4 hours before handling.

Bordeaux, Dark Roast, Espresso, Nickel and Nitefall Finishing Process

- Use this process to match Conestoga's Bordeaux, Dark Roast, Espresso, Nickel and Nitefall stains.
- White wood sand with an oscillating palm sander using 180 grit sandpaper.
- Moisten wood surface by lightly misting with water. Do not over saturate. Allow wood to completely dry for 30 to 60 minutes depending on relative humidity. This will open the grain allowing penetration of stain.
- Apply wiping stain over wood. Wipe all surfaces clean with a lint-free rag.
- Allow wiping stain to dry for a minimum of 1 hour.
- Spray sealer to approximately 4 wet mil thickness.
- When sealer is completely dry, sand sealer with fine grit (220-280) sandpaper using an oscillating palm sander on all flat surfaces. Hand sand all profiles with 220 grit sandpaper.
- Spray on topcoat to approximately 4 wet mil thickness.
- Allow topcoat to dry for a minimum of 4 hours before handling.

Glaze Over Wiping Stains

- Use this process to apply glazes over all Conestoga wiping stains.
- White wood sand with an oscillating palm sander using 180 grit sandpaper.
- Apply wiping stain over wood per DuraGuard finishing instructions. Wipe all surfaces clean with lint-free rag.
- Allow wiping stain to dry for a minimum of 1 hour.
- Spray sealer to approximately 4 wet mil thickness.
- When sealer is completely dry, hand sand all surfaces using 320 grit sandpaper. Make sure to sand in same direction as the wood grain.
- Apply the glaze to the entire surface and wipe the excess glaze off with a lint-free rag, leaving the desired amount of glaze in profiled areas. When matching existing products, make sure the same amount of glaze is left on the surface of the product being glazed as is on the product to be matched. Allow glaze to dry for 1 hour.
- Spray on topcoat to approximately 4 wet mil thickness.
- Allow topcoat to dry for a minimum of 4 hours before handling.

DuraGuard Finishing Instructions (continued)

Mixing Topcoats and Sealers

Follow this process when using DuraGuard topcoats and sealers to match products finished by Conestoga.

- Always use a lined can or plastic container when adding catalyst. Do not catalyze in an unlined metal can.
- Slowly pour the pre-measured container of catalyst into the gallon container of sealer or topcoat. Thoroughly agitate topcoat material, making sure there is no residue on the bottom of the can. Agitation must be continuous. **Do not over catalyze!**
- Once the catalyst has been added, the chemical interaction of the mixture results in a 24 hour “pot life”. After this 24 hour time frame, the mixture begins to cure rendering it unusable.
- Catalyst ratios are listed below.
- We strongly recommend against attempting to extend the pot life of sealer or topcoat by adding virgin material, as it will disrupt the catalyst ratio.
- Spray topcoat to a thickness of 4 wet mils.

Topcoat/Sealer	Amount of Catalyst
Conversion Varnish Products	
Sealer	4.0 ounces of catalyst V66V21 per gallon
15° (low sheen) topcoat	4.0 ounces of catalyst V66V21 per gallon
40° (medium sheen) topcoat	4.0 ounces of catalyst V66V21 per gallon

Topcoat Application Guidelines

- All standard Wiping and Truetone stains default to 40° topcoat; 15° topcoat available upon request.
- All standard Wiping and Truetone stains with glazes default to 15° topcoat; 40° topcoat available upon request.
- All Weathered Grain products finished with wiping stains, wiping stains with glazes, Colourtones and Colourtones with glaze default to 5° topcoat; 15° topcoat available upon request. 40° topcoat not available with Weathered Grain products.
- Antiquing, distressing and wear sanding options selected with wiping stains and wiping stains with glazes default to 15° topcoat; 40° topcoat is available upon request.
- Antiquing, distressing and wear sanding options and Heirloom finishes added to Colourtone, Colourtone with glaze, Prism Paint or Prism Paint with glaze default to 15° topcoat. 40° topcoat not available with any of these finish and option combinations.

DuraGuard Finishing Instructions (continued)

Truetones - Low Complexity

Use this process to match Conestoga's Low Complexity Truetone finishes.

- White wood sand with an oscillating palm sander using 180 grit sandpaper.
- Using spray equipment apply Truetone stain material over wood with even wet coats until the desired color is achieved. **Diaphragm pump and HVLP gun recommended for spray application.**
- Allow stain to dry for a minimum of 30 minutes.
- Spray sealer to approximately 4 wet mil thickness.
- When the sealer is completely dry, sand sealer with fine grit (220-280) sandpaper using an oscillating palm sander on all flat surfaces. Hand sand all profiles with 220 grit sandpaper.
- Spray on topcoat to approximately 4 wet mil thickness.
- Allow topcoat to dry for a minimum of 4 hours before handling.

Truetones - High Complexity

Use this process to match Conestoga's High Complexity Truetone finishes.

- White wood sand with an oscillating palm sander using 180 grit paper.
- Apply the Truetone wiping stain as the base color over wood. Wipe all surfaces clean with a lint-free rag.
- Allow Truetone wiping stain to dry for a minimum of 1 hour.
- Using spray equipment apply the matching Truetone spray stain material over the pre-stained wood with multiple light passes until uniform coverage is achieved. It may take as many as 4 to 6 light passes spraying in opposite directions to get uniform coverage on the board surface. **DO NOT** apply heavy wet coats as this may cause modeling and blotchiness in the spray stain. **(Diaphragm pump and HLVP gun recommended for spray application).**
- Allow the spray stain to dry for a minimum of 30 minutes.
- Spray sealer to approximately 4 wet mil thickness.
- When the sealer is completely dry, sand sealer with fine grit (220-280) sandpaper using an oscillating palm sander on all flat surfaces. Hand sand all profiles with 220 grit paper.
- Spray topcoat to approximately 4 wet mil thickness.
- Allow topcoat to dry for a minimum of 4 hours before handling.

Hand Wiped Glaze Over Truetones

Use this process to apply hand wiped glaze over all Conestoga Truetones.

- Follow application instructions for desired Truetone finish.
- Allow Truetone to dry for a minimum of 30 minutes.
- Spray sealer to approximately 4 wet mil thickness.
- When sealer is completely dry, hand sand all surfaces using 320 grit sandpaper. Make sure to sand in same direction as the wood grain.
- Apply the hand wiped glaze to the entire surface and wipe the excess glaze off with a lint-free rag, leaving the desired amount of glaze in profiled areas. When matching existing products, make sure the same amount of glaze is left on the surface of the product being glazed as is on the product to be matched.
- Allow glaze to dry for a minimum of 1 hour.
- Spray on topcoat to approximately 4 wet mil thickness.
- Allow topcoat to dry for a minimum of 4 hours before handling.

DuraGuard Finishing Instructions (continued)

Colourtones and Prism Paints

Colourtones/Prism Paints are two-part, acid catalyzed, opaque basecoats, high in solids and similar to paint in appearance. Colourtone/Prism Paint finishing materials are non-catalyzed when purchased and must have catalyst purchased separately and added prior to application. These coatings are very durable and resistant to moisture.

Colourtones, Prism Paints and Catalyzation

Colourtone/Prism Paint finishing materials have superior film build, adhesion, excellent sanding properties and moisture resistance. It is extremely important to keep these materials thoroughly agitated while spraying. Coatings require the addition of an acid catalyst in order to cure. Since the catalyst has corrosive properties, neither the catalyst nor the catalyzed material should ever be stored in an unlined metal container. Thoroughly agitate material prior to the addition of catalyst. Add only the recommended ratio of catalyst and continue agitation for 5 minutes prior to spraying the material. **Do not over catalyze!** After catalyzation, material will have a maximum pot life of 24 hours.

Colourtone/Prism Paint materials have a limited amount of time between the application of the first and second coats and the application of topcoat. In order to achieve the proper chemical bond between coats, topcoat must be applied within 24 hours after applying the second coat. This time frame remains the same for both glazed and non-glazed products. The Colourtone/Prism Paint systems require a 15° conversion varnish topcoat. The use of any other topcoat material may result in lifting, discoloration, poor adhesion, cracking, poor moisture resistance and other finish related problems. Conestoga recommends the use of the DuraGuard glazes and topcoat in combination with Colourtone/Prism Paint finishing materials.

Surface Preparation for Colourtones and Prism Paints

- Fill all open voids with wood putty, sanding off excess putty.
- Sand surface of product with an oscillating palm sander using 180 grit sandpaper.

Spraying Colourtones and Prism Paints

- Thoroughly agitate Colourtone/Prism Paint material, add catalyst while material is under agitation. Add 4 ounces catalyst V66V21 to 1 gallon of Colourtone/Prism Paint in a lined metal can or plastic container. Pot life after catalyzation is 24 hours. Keep material under constant agitation.
- Spray Colourtone/Prism Paint material to a thickness of 4 wet mils.
- Allow first coat of material to dry for a minimum of 2 hours.
- Sand the entire surface with 280 grit sandpaper.
- Spray a second Colourtone/Prism Paint coat to a thickness of 4 wet mils.
- Allow the second coat to dry 2 hours before applying glaze or topcoat. A topcoat must be applied within 24 hours, whether product is glazed or non-glazed.
- Allow topcoat to dry for a minimum of 4 hours before handling.

Glaze over Colourtones

- Cabinet components are available with specific Colourtone and glaze combinations only. Case parts (sides, tops, bottoms, backs and front frames) are finished with special Colourtones that have been tinted to match the overall color of components finished in specific Colourtone and glaze combinations. Application of these tinted finishes must follow the Spraying Colourtones application instructions above.
- For components accompanying cabinet parts finished with the specially tinted Colourtone finish, a separate Colourtone and hand wiped glazing application process must be used. Use the following Glaze over Colourtone application instructions for items that require an actual glaze hang. These components include doors, drawer fronts and ancillary items.
- Apply the glaze to all surfaces after the second coat of Colourtone is fully dry. Glaze may be applied with a rag and/or a brush.

DuraGuard Finishing Instructions (continued)

Glaze over Colourtones (continued)

- Wipe glaze off surfaces immediately using a “selective” wiping technique, leaving behind the desired amount of glaze in the profiled and flat areas. If matching to Conestoga prefinished products, ensure that the same amount of glaze is left in profiled areas and flat surfaces as on the Conestoga product.
- Allow glaze to dry for 1 hour.
- Spray with Conestoga’s DuraGuard 15° sheen conversion varnish topcoat to a thickness of 4 wet mils. A topcoat must be applied within 24 hours, whether product is glazed or non-glazed.
- Allow topcoat to dry for a minimum of 4 hours before handling.

Topcoat over Colourtones and Prism Paints

- Thoroughly agitate topcoat material, ensuring there is no residue on bottom of can.
- Add 4 ounces of catalyst V66V21 per gallon of 15° sheen topcoat in a lined metal can or plastic container and agitate for 5 minutes prior to spraying. Keep topcoat under constant agitation. After catalyzation, the material has a 24 hour pot life. We do not recommend extending pot life by adding virgin material, as this will disrupt your catalyst ratio.
- Spray 4 wet mils of topcoat over Colourtone/Prism Paint.
- Allow topcoat to dry for a minimum of 4 hours before handling.

Antiquing on Colourtones and Prism Paints

Antiquing is a process to create the appearance that portions of the finish and even some of the substrate have been worn away from prolonged daily use.

- After allowing the Colourtone/Prism Paint material to thoroughly dry, the entire piece must be sanded with an oscillating palm sander using 280 grit sandpaper. Randomly sand through both coats of finish to expose the raw wood on profiled areas, edges and corners to simulate an aged, worn appearance. If antiquing is used in combination with the wear sanding option, follow the areas previously wear sanded. The amount and location of the antiquing should vary by personal preference, but should be focused on areas that would typically show wear from daily use. Refer frequently to the sample door finished by Conestoga.

Primers

Conestoga’s Standard primer is available in white, light grey, medium grey and dark grey and are post catalyzed, acid cured primers, compatible with many high quality topcoats. While there are many topcoats available on the market today, Conestoga recommends only acid cured, pigmented conversion varnishes.

Surface Preparation for Primer

- Fill all open voids with wood putty, sanding off excess putty.
- Sand surface of product with an oscillating palm sander using 180 grit sandpaper.

Spraying Standard Primer

- Thoroughly agitate primer materials, ensuring there is no residue on bottom of can. Add catalyst while the primer is under agitation in a lined metal can or plastic container.
- Add 14 ounces catalyst 494 to 1 gallon of primer. Pot life after catalyzation is 24 hours. Keep material under constant agitation.
- Spray primer to a thickness of 5 wet mils.
- Allow primer to dry for a minimum of 1 hour before sanding.
- Sealer sand the entire surface with 280 grit sandpaper prior to applying a color coat.

DuraGuard Finishing Instructions (continued)

Legal Disclaimers

- DuraGuard finishes are industrial in nature, unlike finishes purchased at a retail store. Although DuraGuard offers a higher quality finish than most finishes, it also is more combustible, more volatile and requires a higher level of expertise to apply. Due to the complexities involved with any finishing process, Conestoga will not be liable for any damages or injury resulting from the use of this product, even when the customer has taken precautions. Conestoga's liability is limited to the original purchase price of the finishing material.
- In order to best match any DuraGuard finish color, it is important to follow the processes outlined on the previous pages. If these steps are not followed, your finished product may not match the products purchased from Conestoga. However, please bear in mind that following these procedures will not always guarantee an exact match. Due to the many variables involved in any finishing process, Conestoga assumes no responsibility if products that are finished by the customer using the DuraGuard System are not an exact match to the finished products sold by Conestoga.

Important Note: All drying times mentioned in this document are to be used as guidelines only. The actual drying time will vary according to the climate in which the finish is applied.

- The DuraGuard Finish System is scientifically designed so that each of the materials, from basecoat or stain, to topcoat, work with one another, thereby providing a beautiful protective finish for your wood products. Finish materials not sold by Conestoga may react unfavorably with DuraGuard finishing materials causing poor topcoat adhesion, discoloration or other problems.
- Color variation can occur on separately ordered jobs. Conestoga cannot guarantee color matches on material ordered at different times. Length of time between orders may also be a factor affecting color variation. Environmental factors where existing material is stored or installed may affect finished products to the degree of causing an appearance different to that of a newly finished product. To better ensure consistency of appearance, Conestoga recommends against placing partial orders.

Health and Safety Information

Refer to SDS for health and safety information. Log on to www.conestogawood.com/sds for 24 hour access to SDS information.

Care and Cleaning of Fine Kitchen Cabinetry

- The DuraGuard topcoat offers the utmost protection for kitchen cabinet applications and provides superior chemical and common kitchen stain resistance while maintaining color and sheen.
- DuraGuard topcoats require minimal care and cleaning. We recommend periodic cleaning with a mild detergent and water solution to remove dirt, dust and grease that buildup with routine usage. Dampen a soft, non-abrasive cloth and wipe entire exterior surface of cabinetry and dry with a soft cloth. Never use a wet cloth that allows water to run down the cabinetry and always dry cabinetry immediately if water is spilled onto the surface.
- Care should be taken not to use abrasive cleansers, ammonia or any other type of harsh chemical. These cleaning agents may cause discoloration, scratching, marring and dulling of the finish. We also discourage use of furniture polishes and waxes on finished cabinetry. Furniture polishes alter the original sheen level and may leave a film on the surface that attracts dust and dirt. These polishes may also cause an irregular or blotchy appearance because they are unable to stand up to many common kitchen stains.