

## Advantage Home Office/Media Cabinet Standard Features and Options

The information described below discusses some of the features and options of Advantage Home Office/Media cabinets. Customers have the option to omit these standard features as well as add other design options, which can be quickly referenced at the bottom of each page in the Home Office/Media Cabinet Section labeled "Home Office/Media Options Key". For more detailed descriptions and images of all available options see Options, Section 12 within this manual. The options described below are available on all Home Office/Media cabinets unless specifically noted next to the individual cabinet as **Unavailable Options**.

**Standard Shelving & Omit Shelving (OS)** – 3/4" thick White Birch plywood shelving with a durable UV topcoat is standard with any Home Office/Media cabinet with shelves. If shelving is not desired within a specific cabinet, indicate **Omit Shelving** when ordering.

**5mm Shelf Holes & No Shelf Holes (NSH)** – Pre-drilled 5mm shelf holes on 32mm centers are a standard feature of all Home Office/Media cabinets with shelves. If shelf holes are not desired, indicate No Shelf Holes when ordering. **Note:** If shelving and shelf holes are not desired, both No Shelf Holes and Omit Shelving must be specified when ordering.

**Cabinet Case Material Options** – Most optional cabinet case materials will match the door, drawer front and face frame specie and are available with Home Office/Media cabinets produced in standard Advantage species.

- **Exposed Ends (EXP)** – Matching specie veneer on the exterior face of 1/2" thick plywood cabinet sides. The interior of plywood Exposed Ends will remain as White Birch.
- **Flush Ends (FL)** – Matching specie veneer on the exterior face of 3/4" thick plywood cabinet sides. The interior of plywood Flush Ends will remain as White Birch.
- **Flush Unexposed Ends (FUE)** – Natural Birch veneer on the exterior face of the 3/4" thick flush plywood cabinet sides. Designed to be utilized when extra support is desired from non-exposed flush end panels. The interior of the plywood Flush Unexposed Ends will remain as White Birch.
- **Matching Interior (MI)** – Matching specie veneer is available on all internal cabinet parts. The **Matching Interior Option** is not available in combination with the Solid Wood Shelf Upgrade Option.

**Solid Wood Shelf Upgrade (WS)** – The **Solid Wood Shelf Upgrade** replaces the standard White Birch plywood shelving with solid wood Natural Birch shelving. Solid Wood Shelving is 3/4" thick with a bullnosed front edge and is prefinished with a UV topcoat. The Solid Wood Shelf Upgrade Option is not available in combination with the Matching Interior Option or when Home Office/Media cabinets are deeper than 24". Solid shelving available up to 18".

**Dust Top (DT)** - The **Dust Top Option** replaces the front and back strips at the top of the Home Office/Media cabinet with a 1/2" thick full depth Birch plywood top. The Dust Top is machined on the right and left sides to slide into the grooves near the top of the side panels, offering additional stability to the cabinet.

**Natural Finished Bottom Option (NB)** – The **Natural Finished Bottom Option** provides a UV topcoat on the exterior of the top and bottom of the Home Office/Media cabinets. When the Natural Finished Bottom Option is selected, the cabinet top and bottom exteriors will be upgraded to a White Birch plywood.

**Extended Stiles (EXT)** – The **Extended Stile Option** provides additional width on the left, right or both stiles of the front frame. Up to 3" of additional material provides clearance between the cabinet and adjacent walls or other cabinetry allowing cabinet doors and drawers to fully open without interference. Extended stiles also provide the opportunity to scribe the frame to the wall contours during the installation process.

**Leg Extensions (LE)** – the **Leg Extensions Option** can be added to the left, right or both stiles of the front frame. When selected, the Leg Extension Option omits the toe kick from the cabinet and extends the front frame stile(s) to the floor creating a closed end panel to the cabinet.

**Prep For False Door Side (PFD)** – The **Prep for False Door Side Option** maintains the overall front frame width ordered, but relocates the cabinet side panel, moving it inward by 13/16" for each Prep for False Door Side selected. This creates a 3/4" reveal behind the 1-1/2" wide front frame stile to accommodate the decorative door end panel. The Prep for False Door Side Option can be ordered for the left, right or both cabinet sides. All cabinet components are automatically resized accordingly when the Prep for False Door Side Option is selected.

## Advantage Home Office/Media Cabinet Standard Features and Options (continued)

---

**Square Toe Kick Notch (STN)** – Standard Media Center cabinet side panels have a 3-1/2" deep x 4" high toe kick notch with a 1/4" radius at the intersecting corner. This corner can be squared with the **Square Toe Notch Option** which makes the corner notch 90° to aid in toe kick installation. The Square Toe Kick Notch Option is not available with Home Office cabinetry.

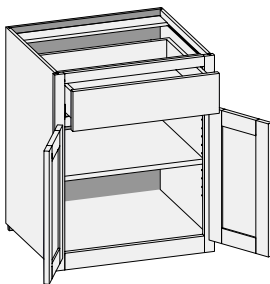
**Flush Toe (FT)** – When selected, the **Flush Toe Option** replaces the standard recessed toe kick notches in both side panels with a 5-1/2" bottom rail on the front frame. The Flush Toe Option is not available with Home Office cabinetry, but is available with Media Center cabinetry.

**Shaped Bottom Rail (SBR)** – The **Shaped Bottom Rail Option** automatically adds the Flush Toe to the cabinet's front frame. The 5-1/2" wide bottom rail gives customers the choice of 6 decorative shapes on the bottom rail of the Flush Toe, providing a furniture type appearance. The Shaped Bottom Rail Option is not available with Home Office cabinetry, but is available with Media Center cabinetry.

**Shaped Side (SS)** – The **Shaped Side Option** provides a choice of 4 decorative shapes on the bottom of Exposed Ends or Flush Ends. The Shaped Side Option is available on left, right or both sides, but is not available in combination with Extended Stiles, Flushed Unexposed Ends or Loose Toe Platform. The Shaped Side Option is not available with Home Office cabinetry, but is available with Media Center cabinetry.

**Toe Space Side (TSS)** – The **Toe Space Side Option** replaces the bottom 4" of the side panel with a recessed toe space on the left, right or both sides of most Home Office/Media cabinets. This option is commonly used on island or peninsula cabinet sides.

## DB/CSDB - Desk Base



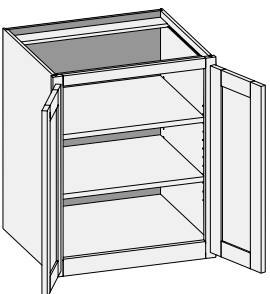
2-1/2" Bottom Rail

**Custom Size Ranges**  
 Single Door Width: 12" – 24"  
 Butt Door Width: 24" – 36"  
 Height: 29-1/2"  
 Depth: 18", 21", 24"

- Specify single or butt doors on custom size cabinets 24" wide.
- 2-1/2" high Flush Toe standard.
- Unavailable Options: SS, SBR, LE, TSS and NB.

Single Door Cabinets – 24" Deep		Butt Door Cabinet – 24" Deep
DB1229.5	DB2129.5	DB2429.5BD
DB1529.5	DB2429.5	
DB1829.5		

## DBFD/CSDBFD - Desk Base Full Door



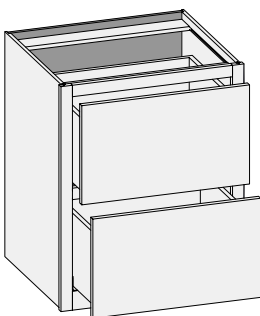
2-1/2" Bottom Rail

**Custom Size Ranges**  
 Single Door Width: 12" – 24"  
 Butt Door Width: 24" – 36"  
 Height: 29-1/2"  
 Depth: 18" – 30"

- Specify single or butt doors on custom size cabinets 24" wide.
- 2-1/2" high Flush Toe standard.
- Unavailable Options: SS, SBR, LE, TSS and NB.

Single Door Cabinets – 24" Deep		Butt Door Cabinet – 24" Deep
DBFD1229.5	DBFD2129.5	DBFD2429.5BD
DBFD1529.5	DBFD2429.5	
DBFD1829.5		

## DB2D/CSDB2D - Desk Base Two Drawers



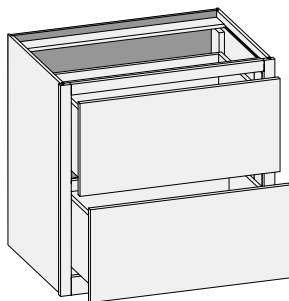
2-1/2" Bottom Rail

**Custom Size Ranges**  
 Width: 12" – 36"  
 Height: 29-1/2"  
 Depth: 18", 21", 24"

- Both drawers designed to accommodate Pendaflex files.
- 15" width Pendaflex files must be installed front to back.
- 2-1/2" high Flush Toe standard.
- Unavailable Options: SS, SBR, LE, TSS and NB.

24" Deep	
DB2D1529.5	DB2D2129.5
DB2D1829.5	

**Options Key:** EXP = Exposed End(s) FL = Flush End(s) FUE = Flush Unexposed End(s) SS = Shaped Side PFD = Prep for False Door  
 EXT = Extended Stile(s) FT = Flush Toe SBR = Shaped Bottom Rail LE = Leg Extension TSS = Toe Space Side OS = Omit Shelving  
 NSH = No Shelf Holes WS = Solid Wood Shelves MI = Matching Interior DT = Dust Top NB = Natural Finished Bottom  
 PTB = Plwood Toe Backer

**LF2D/CSLF2D - Lateral File Two Drawer**


2-1/2" Bottom Rail

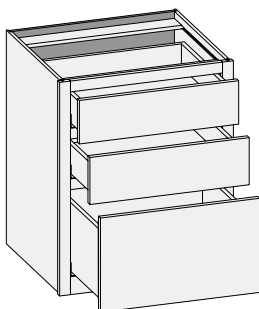
Custom Size Ranges  
 Width: 30" – 36"  
 Height: 29-1/2"  
 Depth: 21"

- Full extension interlocking drawer slides only.
- 2-1/2" high Flush Toe standard.
- Unavailable Options: SS, SBR, LE and TSS.

**21" Deep**

LF2D3029.5

LF2D3629.5

**DB3D/CSDB3D - Desk Base Three Drawers**


2-1/2" Bottom Rail

Custom Size Ranges  
 Width: 12" – 36"  
 Height: 29-1/2"  
 Depth: 18", 21", 24"

- Bottom drawer designed to accommodate Pendaflex files.
- 15" width Pendaflex files must be installed front to back.
- 2-1/2" high Flush Toe standard.
- Unavailable Options: SS, SBR, LE and TSS.

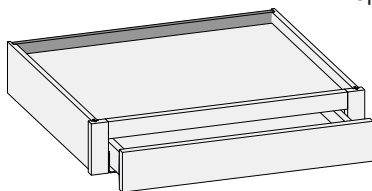
**24" Deep**

DB3D1529.5

DB3D2129.5

DB3D1829.5

DB3D2429.5

**DD/CSDD - Desk Drawer**


Custom Size Ranges  
 Width: 12" – 36"  
 Height: 4-1/2"  
 Depth: 18", 21", 24"

- No bottom or bottom rail.
- Unavailable Options: SS, PFD and LE.

**24" Deep**

DD184.5

DD304.5

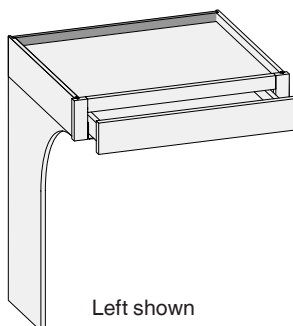
DD214.5

DD334.5

DD244.5

DD364.5

DD274.5

**DDSL (R)/CSDDSL (R) - Desk Drawer Support Left (or Right)**


Left shown

Custom Size Ranges  
 Height: 29-1/2" – 42"  
 Depth: 18", 21", 24"

- Support leg only.
- Replaces left or right side of desk drawer.
- Bottom can be trimmed to custom height.
- Exposed edge is banded with matching specie veneer.
- Unavailable Options: SS, PFD, EXT and LE.

**24" Deep**

DDSL2134.5

DDSR2134.5

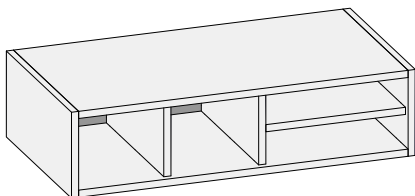
DDSL2434.5

DDSR2434.5

**Options Key:** EXP = Exposed End(s) FL = Flush End(s) FUE = Flush Unexposed End(s) SS = Shaped Side PFD = Prep for False Door  
 EXT = Extended Stile(s) FT = Flush Toe SBR = Shaped Bottom Rail LE = Leg Extension TSS = Toe Space Side OS = Omit Shelving  
 NSH = No Shelf Holes WS = Solid Wood Shelves MI = Matching Interior DT = Dust Top NB = Natural Finished Bottom  
 PTB = Plwood Toe Backer

### LFS/CSLFS - Letter File Slot

Custom Size Ranges  
Width: 24" – 29-15/16"  
Height: 6"  
Depth: 12-1/2"

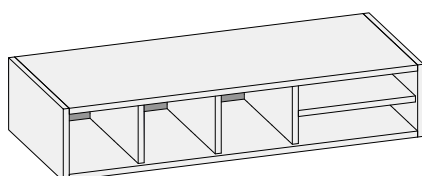


- 1/2" matching specie doweled plywood construction.
- Recessed back design for custom depth modification.
- Exposed edges are banded with matching specie veneer.
- When width changes, vertical openings change.
- No options available.

12-1/2" Deep	
LFS246	LFS276

### LFS/CSLFS - Letter File Slot

Custom Size Ranges  
Width: 30" – 32-15/16"  
Height: 6"  
Depth: 12-1/2"

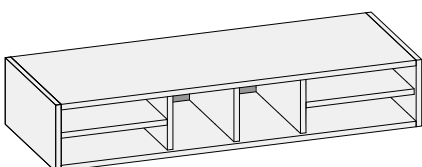


- 1/2" matching specie doweled plywood construction.
- Recessed back design for custom depth modification.
- Exposed edges are banded with matching specie veneer.
- When width changes, vertical openings change.
- No options available.

12-1/2" Deep	
LFS306	

### LFS/CSLFS - Letter File Slot

Custom Size Ranges  
Width: 33" – 38-15/16"  
Height: 6"  
Depth: 12-1/2"

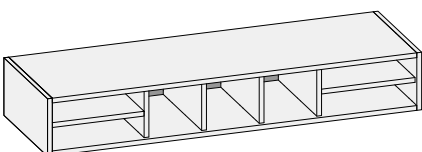


- 1/2" matching specie doweled plywood construction.
- Recessed back design for custom depth modification.
- Exposed edges are banded with matching specie veneer.
- When width changes, vertical openings change.
- No options available.

12-1/2" Deep	
LFS336	LFS366

### LFS/CSLFS - Letter File Slot

Custom Size Ranges  
Width: 39" – 44-15/16"  
Height: 6"  
Depth: 12-1/2"

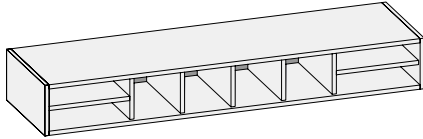


- 1/2" matching specie doweled plywood construction.
- Recessed back design for custom depth modification.
- Exposed edges are banded with matching specie veneer.
- When width changes vertical, openings change.
- No options available.

12-1/2" Deep	
LFS396	LFS426

**Options Key:** EXP = Exposed End(s) FL = Flush End(s) FUE = Flush Unexposed End(s) SS = Shaped Side PFD = Prep for False Door  
EXT = Extended Stile(s) FT = Flush Toe SBR = Shaped Bottom Rail LE = Leg Extension TSS = Toe Space Side OS = Omit Shelving  
NSH = No Shelf Holes WS = Solid Wood Shelves MI = Matching Interior DT = Dust Top NB = Natural Finished Bottom  
PTB = Plywood Toe Backer

### LFS/CSLFS - Letter File Slot



Custom Size Ranges  
 Width: 45" – 48"  
 Height: 6"  
 Depth: 12-1/2"

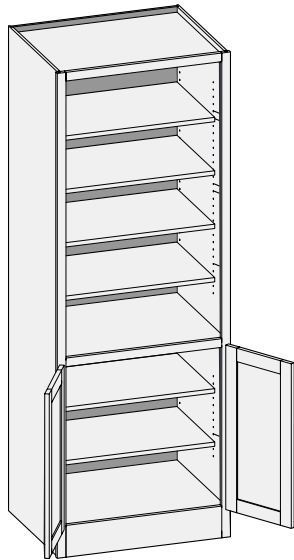
- 1/2" matching specie doweled plywood construction.
- Recessed back design for custom depth modification.
- Exposed edges are banded with matching specie veneer.
- When width changes, vertical openings change.
- No options available.

#### 12-1/2" Deep

LFS456

LFS486

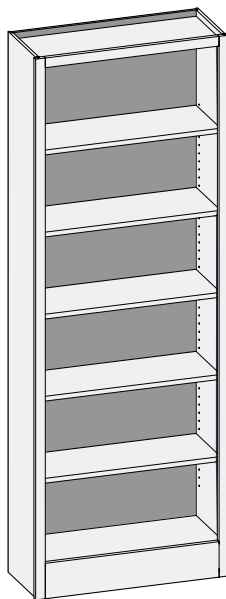
### ORC/CSORC - Other Room Cabinet



Custom Size Ranges  
 Single Door Width: 12" – 24"  
 Butt Door Width: 24" – 36"  
 Height: 84" – 120"  
 Depth: 5-1/2" – 30"

- 5-1/2" Flush Toe standard.
- Matching specie interior is not available over 96" high. White Birch UV topcoated material will be used.
- Doors on top section are optional and must be specified.
- Lower section aligns with 34-1/2" high base cabinets.
- When height changes, upper opening height changes. Lower opening height fixed at 27-1/2".
- 84" – 90" high has six shelves.
- 90-1/16" – 96" high has seven shelves.
- 96-1/16" – 108" high has eight shelves.
- 108-1/16" – 120" high has nine shelves.
- Specify single or butt doors on custom size cabinets 24" wide.
- Unavailable options: SS, SBR and TSS.

### ORS/CSORS - Other Room Shelf

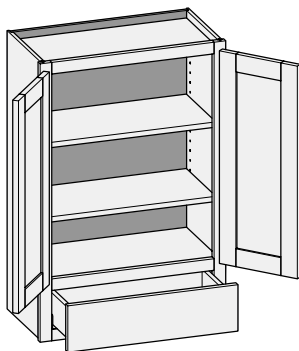


Custom Size Ranges  
 Width: 12" – 36"  
 Height: 84" – 120"  
 Depth: 5-1/2" – 30"

- 5-1/2" Flush Toe standard.
- Matching specie interior is not available over 96" high. White Birch UV topcoated material will be used.
- 84" – 90" high has six shelves.
- 90-1/16" – 96" high has seven shelves.
- 96-1/16" – 108" high has eight shelves.
- 108-1/16" – 120" high has nine shelves.
- Unavailable options: SS, SBR and TSS.

**Options Key:** EXP = Exposed End(s) FL = Flush End(s) FUE = Flush Unexposed End(s) SS = Shaped Side PFD = Prep for False Door  
 EXT = Extended Stile(s) FT = Flush Toe SBR = Shaped Bottom Rail LE = Leg Extension TSS = Toe Space Side OS = Omit Shelving  
 NSH = No Shelf Holes WS = Solid Wood Shelves MI = Matching Interior DT = Dust Top NB = Natural Finished Bottom  
 PTB = Plywood Toe Backer

## W1D/CSW1D - Wall One Drawer

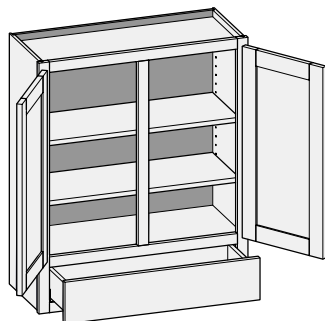


Custom Size Ranges  
Single Door Width: 12" – 24"  
Butt Door Width: 24" – 36"  
Height: 30" – 72"  
Depth: 12", 12-1/2",  
15", 18", 21", 24"

- When height changes, upper opening height changes. Lower opening height fixed at 5".
- 30" – 35-15/16" high has one shelf.
- 36" – 47-15/16" high has two shelves.
- 48" – 59-15/16" high has three shelves.
- 60" – 72" high has four shelves.
- Specify single or butt doors on custom size cabinets 24" wide.
- Unavailable options: PFD, SS, FT, SBR, LE, TSS, DT.

Single Door Cabinets – 12-1/2" Deep			Butt Door Cabinets – 12-1/2" Deep		
53" High	59" High	65" High	53" High	59" High	65" High
W1D1553	W1D1559	W1D1565	W1D2453BD	W1D2459BD	W1D2465BD
W1D1853	W1D1859	W1D1865	W1D2753BD	W1D2759BD	W1D2765BD
W1D2153	W1D2159	W1D2165	W1D3053BD	W1D3059BD	W1D3065BD
W1D2453	W1D2459	W1D2465	W1D3353BD	W1D3359BD	W1D3365BD
			W1D3653BD	W1D3659BD	W1D3665BD

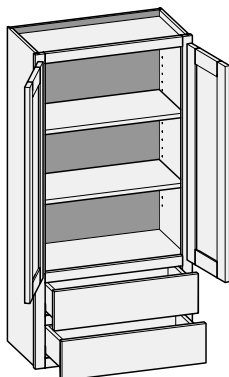
## CSW1DCS - Wall One Drawer w/Center Stile



Custom Size Ranges  
Width: 27" – 36"  
Height: 30" – 72"  
Depth: 12", 12-1/2",  
15", 18", 21", 24"

- When height changes, upper opening height changes. Lower opening height fixed at 5".
- 30" – 35-15/16" high has one shelf.
- 36" – 47-15/16" high has two shelves.
- 48" – 59-15/16" high has three shelves.
- 60" – 72" high has four shelves.
- Specify single or butt doors on custom size cabinets 24" wide.
- Unavailable options: PFD, SS, FT, SBR, LE, TSS, DT.

## W2D/CSW2D - Wall Two Drawer



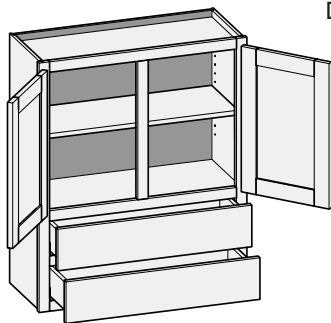
Custom Size Ranges  
Single Door Width: 12" – 24"  
Butt Door Width: 24" – 36"  
Height: 30" – 72"  
Depth: 12", 12-1/2",  
15", 18", 21", 24"

- When height changes, upper opening height changes. Lower opening heights fixed at 5".
- 30" – 41-15/16" high has one shelf.
- 42" – 47-15/16" high has two shelves.
- 48" – 59-15/16" high has three shelves.
- 60" – 72" high has four shelves.
- Specify single or butt doors on custom size cabinets 24" wide.
- Unavailable options: PFD, SS, FT, SBR, LE, TSS, DT.

Single Door Cabinets – 12-1/2" Deep			Butt Door Cabinets – 12-1/2" Deep		
53" High	59" High	65" High	53" High	59" High	65" High
W2D1553	W2D1559	W2D1565	W2D2453BD	W2D2459BD	W2D2465BD
W2D1853	W2D1859	W2D1865	W2D2753BD	W2D2759BD	W2D2765BD
W2D2153	W2D2159	W2D2165	W2D3053BD	W2D3059BD	W2D3065BD
W2D2453	W2D2459	W2D2465	W2D3353BD	W2D3359BD	W2D3365BD
			W2D3653BD	W2D3659BD	W2D3665BD

**Options Key:** EXP = Exposed End(s) FL = Flush End(s) FUE = Flush Unexposed End(s) SS = Shaped Side PFD = Prep for False Door  
EXT = Extended Stile(s) FT = Flush Toe SBR = Shaped Bottom Rail LE = Leg Extension TSS = Toe Space Side OS = Omit Shelving  
NSH = No Shelf Holes WS = Solid Wood Shelves MI = Matching Interior DT = Dust Top NB = Natural Finished Bottom  
PTB = Plwood Toe Backer



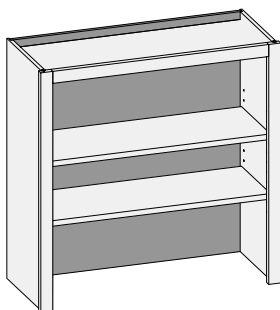
**CSW2DCS - Wall Two Drawer w/Center Stile**


Custom Size Ranges  
 Width: 27" – 36"  
 Height: 30" – 72"  
 Depth: 12", 12-1/2",  
 15", 18", 21", 24"

- When height changes, upper opening height changes. Lower opening heights fixed at 5".
- 30" – 41-15/16" high has one shelf.
- 42" – 47-15/16" high has two shelves.
- 48" – 59-15/16" high has three shelves.
- 60" – 72" high has four shelves.
- Specify single or butt doors on custom size cabinets 24" wide.
- Unavailable options: PFD, SS, EXT, FT, SBR, LE, TSS, DT.

10

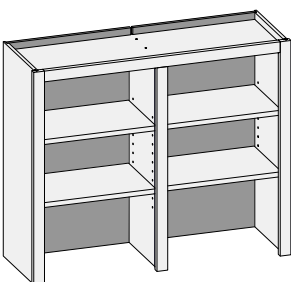
 Advantage Home Office/Media  
 Cabinets

**WOBS/CSWOBS - Wall Open Bookshelf**


Custom Size Ranges  
 Width: 15" – 36"  
 Height: 30" – 72"  
 Depth: 5-1/2" – 27"

- Solid wood shelves not available with matching specie interior option.
- 30" – 35-15/16" high has one shelf.
- 36" – 47-15/16" high has two shelves.
- 48" – 59-15/16" high has three shelves.
- 60" – 72" high has four shelves.

12-1/2" Deep		
53" High	59" High	65" High
WOBS1553	WOBS1559	WOBS1565
WOBS1853	WOBS1859	WOBS1865
WOBS2153	WOBS2159	WOBS2165
WOBS2453	WOBS2459	WOBS2465
WOBS2753	WOBS2759	WOBS2765
WOBS3053	WOBS3059	WOBS3065
WOBS3353	WOBS3359	WOBS3365
WOBS3653	WOBS3659	WOBS3665

**WOBSCS/CSWOBSCS - Wall Open Bookshelf w/Center Stile**


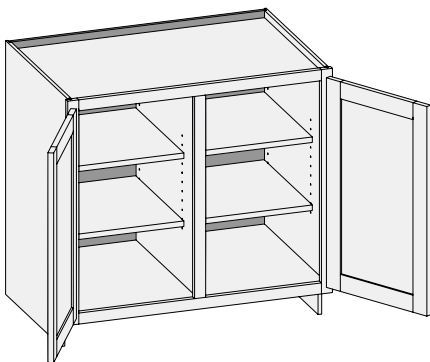
Custom Size Ranges  
 Width: 15" – 36"  
 Height: 30" – 72"  
 Depth: 5-1/2" – 27"

- Fixed vertical partition with independently adjustable shelves.
- Solid wood shelves not available with matching specie interior option.
- 30" – 35-15/16" high has two shelves.
- 36" – 47-15/16" high has four shelves.
- 48" – 59-1/16" high has six shelves.
- 60" – 72" high has eight shelves.

**Options Key:** EXP = Exposed End(s) FL = Flush End(s) FUE = Flush Unexposed End(s) SS = Shaped Side PFD = Prep for False Door  
 EXT = Extended Stile(s) FT = Flush Toe SBR = Shaped Bottom Rail LE = Leg Extension TSS = Toe Space Side OS = Omit Shelving  
 NSH = No Shelf Holes WS = Solid Wood Shelves MI = Matching Interior DT = Dust Top NB = Natural Finished Bottom  
 PTB = Plwood Toe Backer



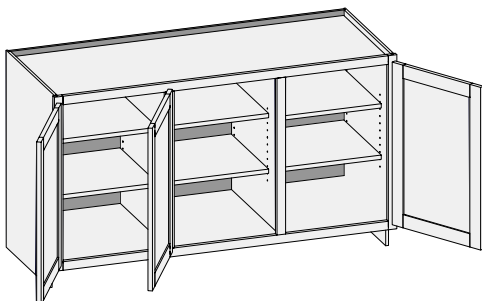
## MC2FD/CSMC2FD - Media Center Two Full Doors



Custom Size Ranges  
Width: 30" – 48"  
Height: 10" – 48"  
Depth: 5-1/2" – 30"

- Fixed vertical partition with independently adjustable shelves.
- 10" – 22" high has no shelves.
- 22-1/16" – 28" high has one shelf.
- 28-1/16" – 40" high has two shelves.
- 40-1/16" – 48" high has three shelves.
- Unavailable options: PFD and TSS.

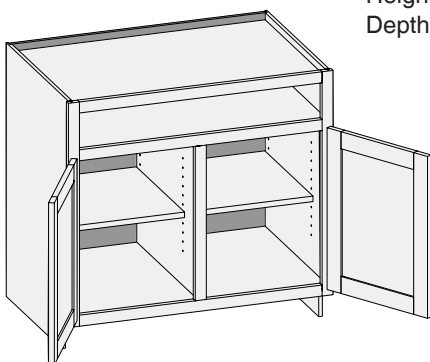
## MC3FD/CSMC3FD - Media Center Three Full Doors



Custom Size Ranges  
Width: 48" – 72"  
Height: 10" – 48"  
Depth: 5-1/2" – 30"

- Fixed vertical partitions with independently adjustable shelves.
- Doors hinged on center style require 1/2" overlay hinges for 1-1/4" and 1-3/8" overlays.
- 10" – 22" high has no shelves.
- 22-1/16" – 28" high has one shelf.
- 28-1/16" – 40" high has two shelves.
- 40-1/16" – 48" high has three shelves.
- Unavailable options: PFD and TSS.

## MC2D/CSMC2D - Media Center Two Door



Custom Size Ranges  
Width: 30" – 48"  
Height: 31-1/2" – 42"  
Depth: 5-1/2" – 30"

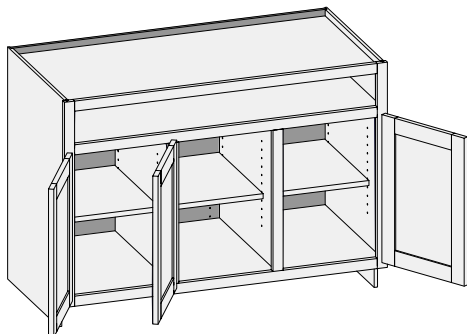
- Fixed vertical partition with independently adjustable shelves.
- When height changes, lower opening height changes. Upper opening height fixed at 5".
- Unavailable options: PFD and TSS.

**Options Key:** EXP = Exposed End(s) FL = Flush End(s) FUE = Flush Unexposed End(s) SS = Shaped Side PFD = Prep for False Door  
EXT = Extended Stile(s) FT = Flush Toe SBR = Shaped Bottom Rail LE = Leg Extension TSS = Toe Space Side OS = Omit Shelving  
NSH = No Shelf Holes WS = Solid Wood Shelves MI = Matching Interior DT = Dust Top NB = Natural Finished Bottom  
PTB = Plwood Toe Backer

### MC3D/CSMC3D - Media Center Three Door

Custom Size Ranges  
 Width: 48" – 72"  
 Height: 31-1/2" – 42"  
 Depth: 5-1/2" – 30"

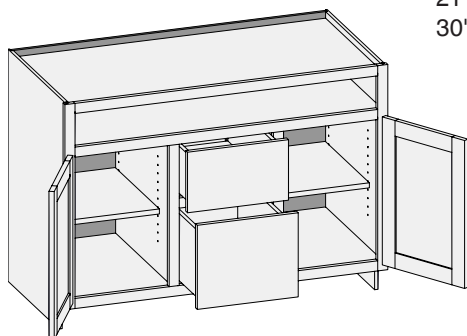
- Fixed vertical partitions with independently adjustable shelves.
- When height changes, lower opening height changes. Upper opening height fixed at 5".
- Doors hinged on center style require 1/2" overlay hinges for 1-1/4" and 1-3/8" overlays.
- Unavailable options: PFD and TSS.



### MC2D2D/CSMC2D2D - Media Center Two Door Two Drawer

Custom Size Ranges  
 Width: 48" – 72"  
 Height: 31-1/2" – 42"  
 Depth: 12", 15", 18",  
 21", 24", 27",  
 30"

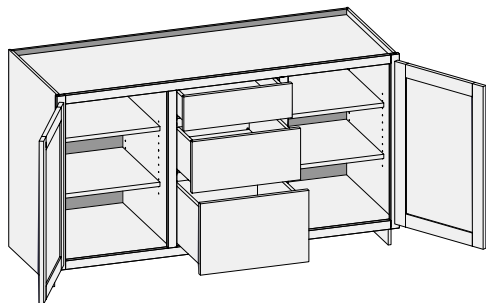
- Fixed vertical partitions with independently adjustable shelves.
- When height changes, lower opening height changes. Upper opening height fixed at 5". Middle opening height fixed at 8".
- Unavailable options: PFD and TSS.



### MC2D3D/CSMC2D3D - Media Center Two Door Three Drawer

Custom Size Ranges  
 Width: 48" – 72"  
 Height: 31-1/2" – 34-1/2"  
 Depth: 12", 15", 18",  
 21", 24", 27", 30"

- Fixed vertical partitions with independently adjustable shelves.
- When height changes, lower opening height changes. Upper opening height fixed at 5". Middle opening height fixed at 8".
- Unavailable options: PFD and TSS.



**Options Key:** EXP = Exposed End(s) FL = Flush End(s) FUE = Flush Unexposed End(s) SS = Shaped Side PFD = Prep for False Door  
 EXT = Extended Stile(s) FT = Flush Toe SBR = Shaped Bottom Rail LE = Leg Extension TSS = Toe Space Side OS = Omit Shelving  
 NSH = No Shelf Holes WS = Solid Wood Shelves MI = Matching Interior DT = Dust Top NB = Natural Finished Bottom  
 PTB = Plwood Toe Backer