

Vesta Wall Cabinet Standard Features and Options

The features below are standard on all Wall cabinets where the design permits. Many standard features can be omitted as needed. The option to omit standard features as well as add design options can be quickly referenced at the bottom of each page in Wall Cabinet Section labeled “Wall Options Key”. For a detailed description and image of the individual options, see Options, Section 20 of this manual. Standard features and options are available on all Wall cabinets unless specifically noted as **Unavailable Option**.

Edgeband – Our Wall cabinets sides, tops, bottoms, mid-floors, and shelves are edgebanded on the front edge only. Interior parts such as uprights or other support members are edgebanded on any visible edges. Edgeband color must be specified to either match the case color (standard offering) or door color if applicable (upcharge applies). When Door Matching Edgeband Option is selected the front edges of the cabinet sides, top, bottom and mid-floor are edgebanded using the door color. The edgeband on the shelves and interior parts will always match the interior case color. Door Matching Edgeband Option available with all Allure DLV, Intrigue TTS, Strata TTS, Vogue TTS, Synchronicity High Gloss and Super Matte colors, as well as wood edgeband in Cherry, Hard Maple, Paint Grade, Red Oak, Rift Cut White Oak and Walnut.

5mm Shelf Holes – 5mm Shelf Holes are pre-drilled on 32mm centers of all cabinets with shelves. **No Shelf Holes (NSH)** and **Omit Shelving (OS)** Options are available on any Wall cabinet with shelves. If both the No Shelf Holes and Omit Shelving Options are required, both must be individually specified.

Hinge Hole Drilling – All Wall cabinets eligible to receive doors will include Blum Frameless INSERTA Hinges and are pre-drilled with 5mm holes to accept the EXPANDO Mounting Plates. A **No Hinge Hole (NHH)** Option is available on any Wall cabinet that would typically include doors. Cabinet hinges can also be omitted, but must be changed from the default of Yes to No. The No Hinge Holes Option does not remove hinges; No Hinges must be specified.

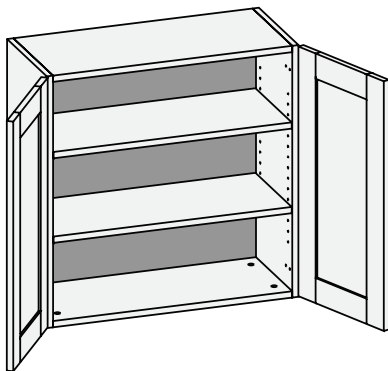
Drawer Slide Hole Drilling – All Wall cabinets that include drawer boxes also include Blum TANDEM Drawer Slides and are pre-drilled with 5mm holes for quick and easy installation. The **No Drawer Slide Hole (NDSH)** Option is available only on cabinets with drawer boxes. Drawer slides can be omitted, but must be changed from the default of Yes to No. The No Shelf Holes Option does not automatically remove drawer slides; No Drawer Slides must be specified.

Matching Case Color (MCC) – With the Matching Case Color Option, the door and drawer front color matches the cabinet interior, exterior and edgeband. The Matching Case Color Option is available with most Wall cabinets and produced in all published Intrigue TTS, Strata TTS and Vogue TTS colors as well as wood edgeband in Cherry, Hard Maple, Paint Grade, Red Oak, Rift Cut White Oak and Walnut.

Wall Options Key: **MCC** = Matching Case Color **NHH** = No Hinge Holes **NSH** = No Shelf Holes **NDSH** = No Drawer Slide Holes **OS** = Omit Shelving

Design Notes:

Standard edgeband color matches cabinet interior color (Coastal White or Fog Grey). Edgeband that matches doors/drawer fronts is available and must be specified. Upcharge applies. Use fillers when installing cabinets adjacent to walls and other cabinets to ensure adequate clearance for doors and drawers. Conestoga recommends that exposed ends be capped with 19mm thick applied decorative end panels (optional and must be specified). When this treatment is used, adjust cabinet width(s) accordingly.

W/CSW - Wall Cabinet


Custom Size Ranges
 Single Door Width: 9" – 24"
 Butt Door Width: 24" – 36"
 Height: 6" – 72"
 Depth: 8" – 30"

- 12" – 18" high has no shelves.
- 18-1/16" – 24" high has one shelf.
- 24-1/16" – 36" high has two shelves.
- 36-1/16" – 48" high has three shelves.
- 48-1/16" – 60" high has four shelves.
- 60-1/16" – 72" high has five shelves.
- Specify single or butt doors on custom size cabinets 24" wide.

Single Door Cabinets – 13" Deep

30" High	36" High	42" High
W0930	W0936	W0942
W1230	W1236	W1242
W1530	W1536	W1542
W1830	W1836	W1842
W2130	W2136	W2142
W2430	W2436	W2442

Butt Door Cabinets – 13" Deep

12" High	15" High	18" High	21" High	24" High	27" High	30" High	36" High	42" High
W3012BD	W2715BD	W2718BD	W2421BD	W2424BD	W3027BD	W2430BD	W2436BD	W2442BD
W3312BD	W3015BD	W3018BD	W2721BD	W2724BD	W3327BD	W2730BD	W2736BD	W2742BD
W3612BD	W3315BD	W3318BD	W3021BD	W3024BD	W3627BD	W3030BD	W3036BD	W3042BD
	W3615BD	W3618BD	W3321BD	W3324BD		W3330BD	W3336BD	W3342BD
			W3621BD	W3624BD		W3630BD	W3636BD	W3642BD

Butt Door Cabinets – 24" Deep

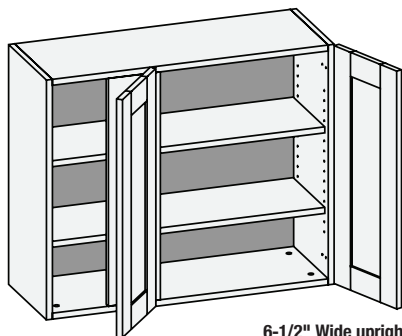
12" High	15" High	18" High	21" High	24" High	27" High
WD3012BD	WD3015BD	WD3018BD	WD3021BD	WD3024BD	WD3027BD
WD3312BD	WD3315BD	WD3318BD	WD3321BD	WD3324BD	WD3327BD
WD3612BD	WD3615BD	WD3618BD	WD3621BD	WD3624BD	WD3627BD

Wall Options Key: MCC = Matching Case Color NHH = No Hinge Holes NSH = No Shelf Holes NDSH = No Drawer Slide Holes OS = Omit Shelving

Design Notes:

Standard edgeband color matches cabinet interior color (Coastal White or Fog Grey). Edgeband that matches doors/drawer fronts is available and must be specified. Upcharge applies. Use fillers when installing cabinets adjacent to walls and other cabinets to ensure adequate clearance for doors and drawers. Conestoga recommends that exposed ends be capped with 19mm thick applied decorative end panels (optional and must be specified). When this treatment is used, adjust cabinet width(s) accordingly.

WBC/CSWBC - Wall Blind Corner



Custom Size Ranges
Single Door Width: 27" – 48"
Butt Door Width: 36" – 48"
Height: 12" – 72"
Depth: 8" – 27"

- Units are reversible (left shown).
- Designed to be used with adjacent 13" deep cabinet.
- 7" blind opening (fixed).
- 12" – 18" high has no shelves.
- 18-1/16" – 24" high has one shelf.
- 24-1/16" – 36" high has two shelves.
- 36-1/16" – 48" high has three shelves.
- 48-1/16" – 60" high has four shelves.
- 60-1/16" – 72" high has five shelves.
- Specify single or butt doors on custom cabinets 36" wide.

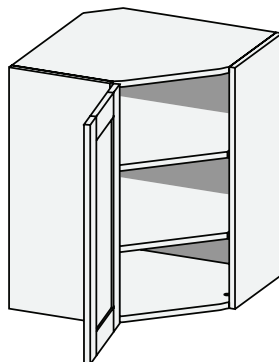
Single Door Cabinets – 13" Deep

21" High	30" High	36" High	42" High
WBC2721	WBC2730	WBC2736	WBC2742
WBC3621	WBC3030	WBC3036	WBC3042
	WBC3630	WBC3636	WBC3642

Butt Door Cabinets – 13" Deep

30" High	36" High	42" High
WBC4230BD	WBC4236BD	WBC4242BD
WBC4830BD	WBC4836BD	WBC4842BD

WCS/CSWCSE - Wall Corner Single Entry

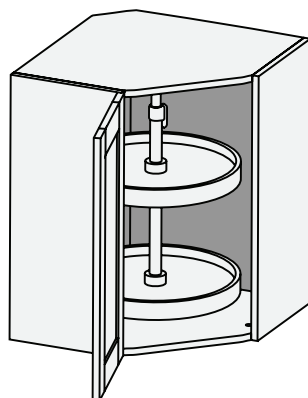


Custom Size Ranges
Width: 24", 27"
Height: 12" – 72"
Depth: 24", 27"

- WCS24 units have 13" deep sides.
- WCS27 units have 16" deep sides.
- 24" – 36" high has two shelves.
- 36-1/16" – 48" high has three shelves.
- 48-1/16" – 60" high has four shelves.
- 60-1/16" – 72" high has five shelves.
- Shelf mounted wood susan shelves are available. See Section 19 – Accessories.

30" High	36" High	42" High
WCS2430	WCS2436	WCS2442
WCS2730	WCS2736	WCS2742

WCSLS – Wall Corner Single Entry with Lazy Susan



Custom Size Ranges
Width: 24", 27"
Height: 30"
Depth: 24", 27"

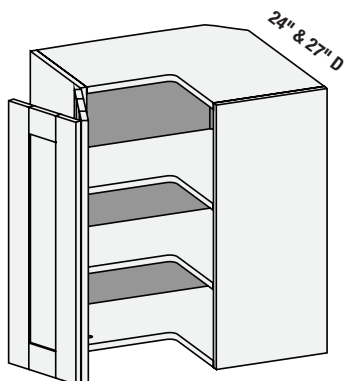
- WCSLS24 has 13" deep sides.
- WCSLS27 has 16" deep sides. Cabinet top and bottom is pre-drilled to accept hub assembly.
- Cabinet includes 18" diameter entry level plastic susan with two independently rotating shelves mounted on a center pole.
- White susan shelves feature a self-lubricating nylon bearings and tool-free height adjustment.
- Size customization is not available due to susan size constraints.

30" High	
WCSLS2430	WCSLS2730

Wall Options Key: MCC = Matching Case Color NHH = No Hinge Holes NSH = No Shelf Holes NDSH = No Drawer Slide Holes OS = Omit Shelving

Design Notes:

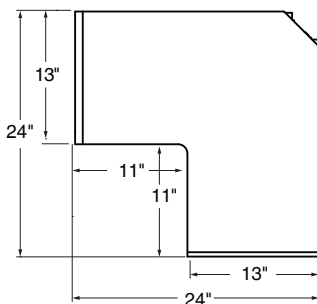
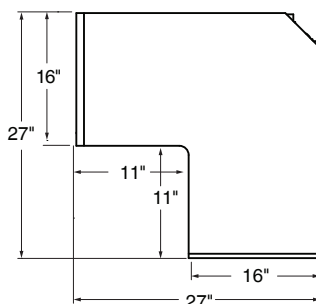
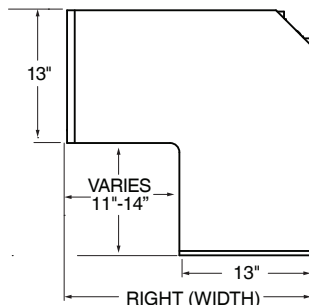
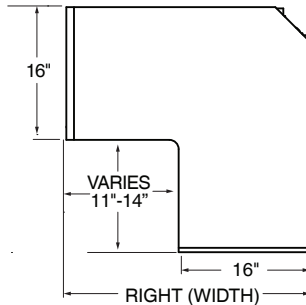
Standard edgeband color matches cabinet interior color (Coastal White or Fog Grey). Edgeband that matches doors/drawer fronts is available and must be specified. Upcharge applies. Use fillers when installing cabinets adjacent to walls and other cabinets to ensure adequate clearance for doors and drawers. Conestoga recommends that exposed ends be capped with 19mm thick applied decorative end panels (optional and must be specified). When this treatment is used, adjust cabinet width(s) accordingly.

WCP/CSWCP - Wall Corner Pie Cut

Custom Size Ranges

24" Wide:
 Width: 24" – 27"
 Height: 12" – 72"
 Depth: 24" – 27"

27" Wide:
 Width: 27" – 30"
 Height: 12" – 72"
 Depth: 27" – 30"

- WCP24 units have 13" deep sides.
- WCP27 units have 16" deep sides.
- 24" – 36" high has two shelves.
- 36-1/16" – 48" high has three shelves.
- 48-1/16" – 60" high has four shelves.
- 60-1/16" – 72" high has five shelves.
- CSWCP available with custom size legs. Specify width (left dimension) and depth (right dimension). Side depth remains fixed; pie cut opening adjusts as size changes.
- Shelf mounted wood susan shelves are available. See Section 19 - Accessories.
- Optional Soss hinges available.

WCP24

WCP27

CSWCP24

CSWCP27

Custom Size Ranges

	13" Deep Sides	16" Deep Sides
Width	24" – 27"	27" – 30"
Height	24" – 48"	24" – 48"
Depth	24" – 27"	27" – 30"

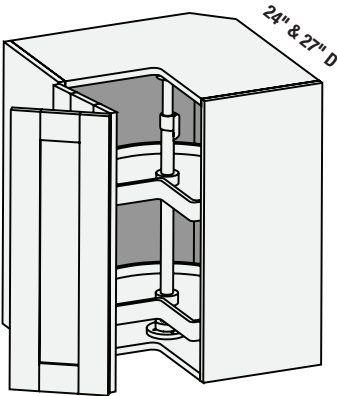
30" High	36" High	42" High
WCP2430	WCP2436	WCP2442
WCP2730	WCP2736	WCP2742

Wall Options Key: **MCC** = Matching Case Color **NHH** = No Hinge Holes **NSH** = No Shelf Holes **NDSH** = No Drawer Slide Holes **OS** = Omit Shelving

Design Notes:

Standard edgeband color matches cabinet interior color (Coastal White or Fog Grey). Edgeband that matches doors/drawer fronts is available and must be specified. Upcharge applies. Use fillers when installing cabinets adjacent to walls and other cabinets to ensure adequate clearance for doors and drawers. Conestoga recommends that exposed ends be capped with 19mm thick applied decorative end panels (optional and must be specified). When this treatment is used, adjust cabinet width(s) accordingly.

WCPLS/CSWCPLS – Wall Corner Lazy Susan



Custom Size Ranges

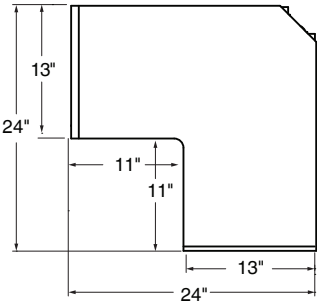
Width: 24", 27"

Height: 30"

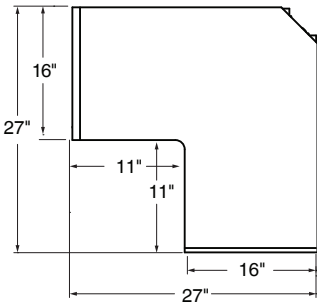
Depth: 24", 27"

- WCPLS24 has 13" deep sides and 18" diameter susan shelves.
- WCPLS27 has 16" deep sides and 24" diameter susan shelves.
- Cabinet top and bottom is pre-drilled to accept hub assembly.
- Cabinet includes plastic susan with two independently rotating kidney shelves mounted on a center pole.
- White susan shelves feature a self-lubricating nylon bearings and tool-free height adjustment.
- Size customization is not available due to susan unit size constraints.
- Optional Soss hinges available.

WCLS2430



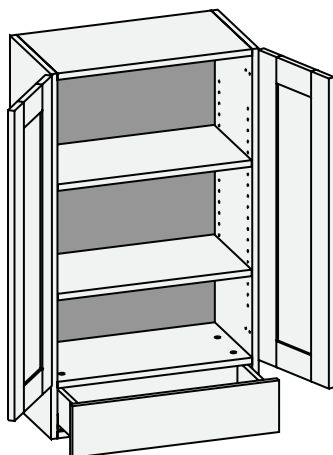
WCLS2730



30" High
WCPLS2430
WCPLS2730

Wall Options Key: **MCC** = Matching Case Color **NHH** = No Hinge Holes **NSH** = No Shelf Holes **NDSH** = No Drawer Slide Holes **OS** = Omit Shelving

Design Notes:
Standard edgeband color matches cabinet interior color (Coastal White or Fog Grey). Edgeband that matches doors/drawer fronts is available and must be specified. Upcharge applies. Use fillers when installing cabinets adjacent to walls and other cabinets to ensure adequate clearance for doors and drawers. Conestoga recommends that exposed ends be capped with 19mm thick applied decorative end panels (optional and must be specified). When this treatment is used, adjust cabinet width(s) accordingly.

W1D/CSW1D - Wall One Drawer


Custom Size Ranges
 Single Door Width: 12" – 24"
 Butt Door Width: 24" – 36"
 Height: 30" – 72"
 Depth: 13", 16", 18",
 21", 24"

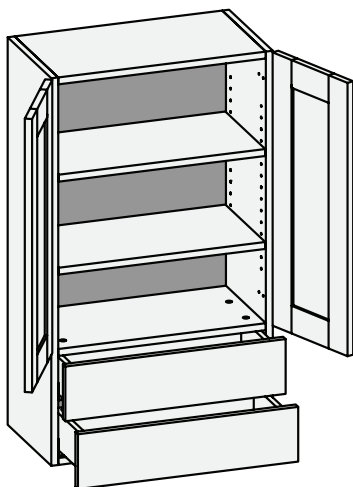
- When height changes, upper opening height changes. Lower drawer front height fixed at 5-15/16".
- 30" – 35-15/16" high has one shelf.
- 36" – 47-15/16" high has two shelves.
- 48" – 59-15/16" high has three shelves.
- 60" – 72" high has four shelves.
- Specify single or butt doors on custom size cabinets 24" wide.

Single Door Cabinets – 13" Deep

48" High	54" High	60" High
W1D1548	W1D1554	W1D1560
W1D1848	W1D1854	W1D1860
W1D2148	W1D2154	W1D2160
W1D2448	W1D2454	W1D2460

Butt Door Cabinets – 13" Deep

48" High	54" High	60" High
W1D2448BD	W1D2454BD	W1D2460BD
W1D2748BD	W1D2754BD	W1D2760BD
W1D3048BD	W1D3054BD	W1D3060BD
W1D3348BD	W1D3354BD	W1D3360BD
W1D3648BD	W1D3654BD	W1D3660BD

W2D/CSW2D - Wall Two Drawer


Custom Size Ranges
 Single Door Width: 12" – 24"
 Butt Door Width: 24" – 36"
 Height: 30" – 72"
 Depth: 13", 16", 18",
 21", 24"

- When height changes, upper opening height changes. Lower opening contains 2 drawer fronts with height fixed at 5-15/16".
- 30" – 41-15/16" high has one shelf.
- 42" – 47-15/16" high has two shelves.
- 48" – 59-15/16" high has three shelves.
- 60" – 72" high has four shelves.
- Specify single or butt doors on custom size cabinets 24" wide.

Single Door Cabinets – 13" Deep

48" High	54" High	60" High
W2D1548	W2D1554	W2D1560
W2D1848	W2D1854	W2D1860
W2D2148	W2D2154	W2D2160
W2D2448	W2D2454	W2D2460

Butt Door Cabinets – 13" Deep

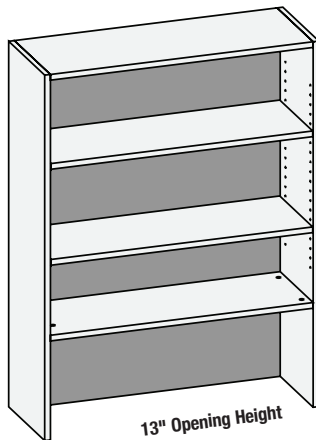
48" High	54" High	60" High
W2D2448BD	W2D2454BD	W2D2460BD
W2D2748BD	W2D2754BD	W2D2760BD
W2D3048BD	W2D3054BD	W2D3060BD
W2D3348BD	W2D3354BD	W2D3360BD
W2D3648BD	W2D3654BD	W2D3660BD

Wall Options Key: MCC = Matching Case Color NHH = No Hinge Holes NSH = No Shelf Holes NDSH = No Drawer Slide Holes OS = Omit Shelving

Design Notes:

Standard edgeband color matches cabinet interior color (Coastal White or Fog Grey). Edgeband that matches doors/drawer fronts is available and must be specified. Upcharge applies. Use fillers when installing cabinets adjacent to walls and other cabinets to ensure adequate clearance for doors and drawers. Conestoga recommends that exposed ends be capped with 19mm thick applied decorative end panels (optional and must be specified). When this treatment is used, adjust cabinet width(s) accordingly.

WOBS/CSWOBS - Wall Open Bookshelf

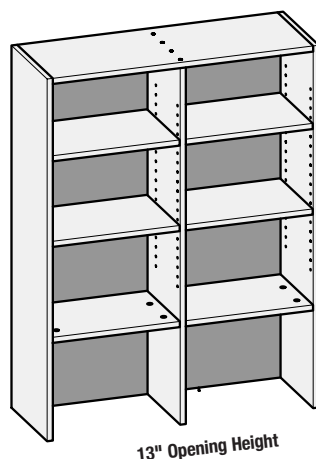


Custom Size Ranges
Width: 9" – 36"
Height: 24" – 96"
Depth: 8" – 27"

- 24" – 35-15/16" high has one fixed.
- 36" – 47-15/16" high has one fixed and one adjustable shelf.
- 48" – 59-1/16" high has one fixed and two adjustable shelves.
- 60" – 72" high has one fixed and three adjustable shelves.
- 72-1/16" – 84" has one fixed and four adjustable shelves.
- > 84" has one fixed and five adjustable shelves.

13" Deep		
48" High	54" High	60" High
WOBS1548	WOBS1554	WOBS1560
WOBS1848	WOBS1854	WOBS1860
WOBS2148	WOBS2154	WOBS2160
WOBS2448	WOBS2454	WOBS2460
WOBS2748	WOBS2754	WOBS2760
WOBS3048	WOBS3054	WOBS3060
WOBS3348	WOBS3354	WOBS3360
WOBS3648	WOBS3654	WOBS3660

WOBSCS/CSWOBSCS - Wall Open Bookshelf w/ Center Stile



Custom Size Ranges
Width: 36" – 72"
Height: 24" – 96"
Depth: 8" – 27"

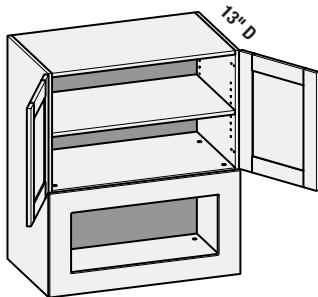
- Fixed vertical partition with independently adjustable shelves.
- 24" – 35-15/16" high has two fixed shelves.
- 36" – 47-15/16" high has two fixed and two adjustable shelves.
- 48" – 59-1/16" high has two fixed and four adjustable shelves.
- 60" – 72" high has two fixed and six adjustable shelves.
- 72-1/16" – 84" has two fixed and eight adjustable shelves.
- > 84" has two fixed and ten adjustable shelves.

13" Deep		
48" High	54" High	60" High
WOBSCS3648	WOBSCS3654	WOBSCS3660
WOBSCS3948	WOBSCS3954	WOBSCS3960
WOBSCS4248	WOBSCS4254	WOBSCS4260
WOBSCS4548	WOBSCS4554	WOBSCS4560
WOBSCS4848	WOBSCS4854	WOBSCS4860
WOBSCS5148	WOBSCS5154	WOBSCS5160
WOBSCS5448	WOBSCS5454	WOBSCS5460
WOBSCS5748	WOBSCS5754	WOBSCS5760
WOBSCS6048	WOBSCS6054	WOBSCS6060
WOBSCS6348	WOBSCS6354	WOBSCS6360
WOBSCS6648	WOBSCS6654	WOBSCS6660
WOBSCS6948	WOBSCS6954	WOBSCS6960
WOBSCS7248	WOBSCS7254	WOBSCS7260

Wall Options Key: MCC = Matching Case Color NHH = No Hinge Holes NSH = No Shelf Holes NDSH = No Drawer Slide Holes OS = Omit Shelving

Design Notes:

Standard edgeband color matches cabinet interior color (Coastal White or Fog Grey). Edgeband that matches doors/drawer fronts is available and must be specified. Upcharge applies. Use fillers when installing cabinets adjacent to walls and other cabinets to ensure adequate clearance for doors and drawers. Conestoga recommends that exposed ends be capped with 19mm thick applied decorative end panels (optional and must be specified). When this treatment is used, adjust cabinet width(s) accordingly.

WMB/CSWMB - Wall Microwave Built-in w/ Butt Doors

Custom Size Ranges

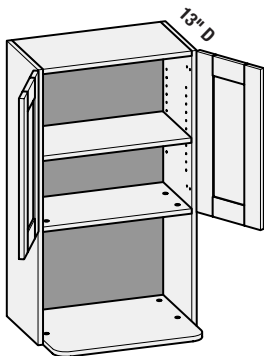
Width: 24" – 36"

Height: 30" – 72"

Depth: 18" – 27"

- Microwave opening height is fixed at 18-1/2".
- Customer to specify height and width of microwave trim panel opening.
- Maximum microwave trim panel opening height is 13-7/16".
- Maximum microwave trim panel opening width is cabinet width minus 6".
- 42" – 48" high has one shelf.
- 48-1/16" – 66" high has two shelves.
- 66-1/16" – 72" high has three shelves.

30" High	36" High	42" High	48" High
WMB2730BD	WMB2736BD	WMB2742BD	WMB2748BD
WMB3030BD	WMB3036BD	WMB3042BD	WMB3048BD

WMWS/CSWMWS - Wall Microwave w/ Shelf w/ Butt Doors

Custom Size Ranges

Width: 24" – 36"

Height: 30" – 72"

Depth: 8" – 27"

- Cabinet bottom extends 6" past cabinet sides.
- When height changes, upper opening height changes. Lower opening height fixed at 16-1/2".
- Cabinet bottom is edgebanded on 3 sides.
- 30" – 41-15/16" high has no shelves.
- 42" – 48" high has one shelf.
- 48-1/16" – 60" high has two shelves.
- 60-1/16" – 72" high has three shelves.

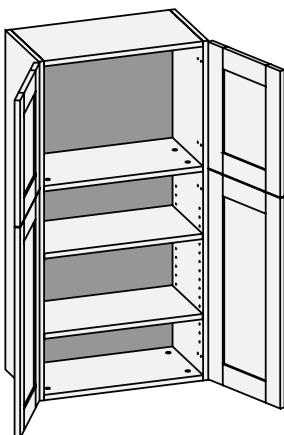
30" High	36" High	42" High	48" High
WMWS2430BD	WMWS2436BD	WMWS2442BD	WMWS2448BD
WMWS2730BD	WMWS2736BD	WMWS2742BD	WMWS2748BD
WMWS3030BD	WMWS3036BD	WMWS3042BD	WMWS3048BD

Wall Options Key: MCC = Matching Case Color NHH = No Hinge Holes NSH = No Shelf Holes NDSH = No Drawer Slide Holes OS = Omit Shelving

Design Notes:

Standard edgeband color matches cabinet interior color (Coastal White or Fog Grey). Edgeband that matches doors/drawer fronts is available and must be specified. Upcharge applies. Use fillers when installing cabinets adjacent to walls and other cabinets to ensure adequate clearance for doors and drawers. Conestoga recommends that exposed ends be capped with 19mm thick applied decorative end panels (optional and must be specified). When this treatment is used, adjust cabinet width(s) accordingly.

TTW/CSTTW - Two Tiered Wall

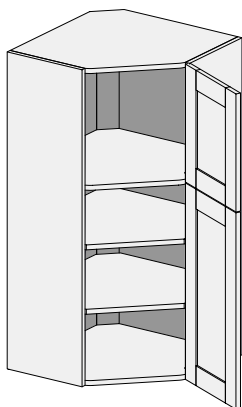


Custom Size Ranges
Single Door Width: 12" – 24"
Butt Door Width: 24" – 36"
Height: 48" – 72"
Depth: 8" – 27"

- When height changes, lower opening height changes. Upper opening height fixed at 17".
- Lower section designed to align with adjacent wall cabinets. Add 18" to adjacent cabinet to determine TTW cabinet height.
- 48" – 60" high has two shelves.
- 60-1/16" – 72" high has three shelves.
- Specify single or butt doors on custom size cabinets 24" wide.

Single Door Cabinets – 13" Deep		Butt Door Cabinets – 13" Deep	
48" High		48" High	
TTW1248	TTW2148	TTW2748 BD	TTW3948 BD
TTW1548	TTW2448	TTW3048 BD	TTW4248 BD
TTW1848		TTW3348 BD	TTW4548 BD
		TTW3648 BD	TTW4848 BD

TTWCSE/CSTTWSE - Two Tiered Wall Corner Single Entry

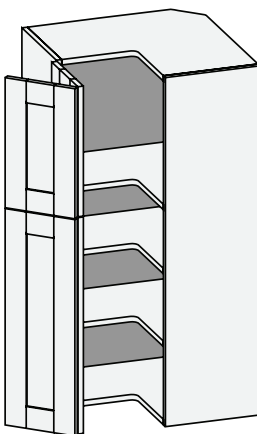


Custom Size Ranges
Width: 24", 27"
Height: 48" – 72"
Depth: 24", 27"

- TTWCSE24 units have 13" deep sides.
- TTWCSE27 units have 16" deep sides.
- Susan Option is not available.
- Lower section designed to align with adjacent wall cabinets. Add 18" to adjacent cabinet to determine TTW cabinet height.
- When height changes, lower opening height changes. Opening height above mid-floor fixed at 17".
- 48" – 60" high has two shelves.
- 60-1/16" – 72" high has three shelves.

48" High
TTWCSE2448
TTWCSE2748

TTWCP/CSTTWCP - Two Tiered Wall Corner Pie Cut



Custom Size Ranges
Width: 24", 27"
Height: 48" – 72"
Depth: 24", 27"

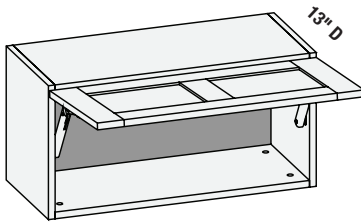
- TTWCP24 units have 13" deep sides.
- TTWCP27 units have 16" deep sides.
- Susan Option is not available.
- Lower section designed to align with adjacent wall cabinets. Add 18" to adjacent cabinet to determine TTW cabinet height.
- When height changes, lower opening height changes. Opening height above mid-floor fixed at 17".
- 48" – 60" high has two shelves.
- 60-1/16" – 72" high has three shelves.

48" High
TTWCP2448
TTWCP2748

Wall Options Key: MCC = Matching Case Color NHH = No Hinge Holes NSH = No Shelf Holes NDSH = No Drawer Slide Holes OS = Omit Shelving

Design Notes:

Standard edgeband color matches cabinet interior color (Coastal White or Fog Grey). Edgeband that matches doors/drawer fronts is available and must be specified. Upcharge applies. Use fillers when installing cabinets adjacent to walls and other cabinets to ensure adequate clearance for doors and drawers. Conestoga recommends that exposed ends be capped with 19mm thick applied decorative end panels (optional and must be specified). When this treatment is used, adjust cabinet width(s) accordingly.

WHKXS/CSWHKXS - Wall w/HK-XS Lift System


Custom Size Ranges
 Width: 15" – 36"
 Height: 12" – 24"
 Depth: 8" – 27"

- Preconfigured units include Blum HK-XS Series lift system hardware and Blum hinges.
- Door weight and design determine the strength and quantity of lift mechanisms provided.
- Cabinet width 15" – 24" are single panel door designs. 24-1/16" – 36" are two panels side by side. Upcharges for two panel door applies.
- 12" – 18" high has no shelves.
- 18-1/16" – 24" high has one shelf.

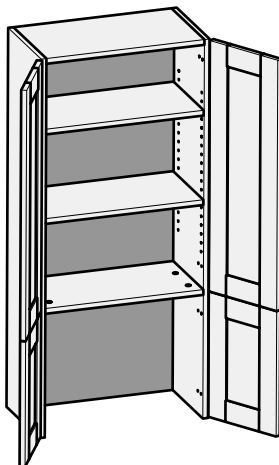
12" High	15" High	18" High	21" High	24" High
WHKXS1512	WHKXS1515	WHKXS1518	WHKXS1521	WHKXS1524
WHKXS1812	WHKXS1815	WHKXS1818	WHKXS1821	WHKXS1824
WHKXS2112	WHKXS2115	WHKXS2118	WHKXS2121	WHKXS2124
WHKXS2412	WHKXS2415	WHKXS2418	WHKXS2421	WHKXS2424
WHKXS2712	WHKXS2715	WHKXS2718	WHKXS2721	WHKXS2724
WHKXS3012	WHKXS3015	WHKXS3018	WHKXS3021	WHKXS3024
WHKXS3312	WHKXS3315	WHKXS3318	WHKXS3321	WHKXS3324
WHKXS3612	WHKXS3615	WHKXS3618	WHKXS3621	WHKXS3624

Wall Options Key: **MCC** = Matching Case Color **NHH** = No Hinge Holes **NSH** = No Shelf Holes **NDSH** = No Drawer Slide Holes **OS** = Omit Shelving

Design Notes:

Standard edgeband color matches cabinet interior color (Coastal White or Fog Grey). Edgeband that matches doors/drawer fronts is available and must be specified. Upcharge applies. Use fillers when installing cabinets adjacent to walls and other cabinets to ensure adequate clearance for doors and drawers. Conestoga recommends that exposed ends be capped with 19mm thick applied decorative end panels (optional and must be specified). When this treatment is used, adjust cabinet width(s) accordingly.

CSWAC – Custom Size Wall Appliance Cabinet



Custom Size Ranges

Single Door Width: 12" – 24"

Butt Door Width: 24" – 36"

Height: 12" – 96"

Depth: 8" – 30"

Top Cab Height: 6" – 90"

- When ordering CSWAC specify the desired top cabinet height. On 1-1/4" & 1-3/8" overlay applications, CWS will adjust the mid-floor location to ensure doors align with adjacent Wall cabinet doors.
- Account for the countertop thickness when specifying overall cabinet height to ensure doors align properly.
- When ordering loose parts for this cabinet, use the BOM and specify the desired overlay to ensure the correct parts are ordered.
- Specify single or butt doors on custom size cabinets 24" wide.
- Shelf quantity is calculated for each opening height.
- Height < 18-1/16" high has no shelves.
- Height 18-1/16" – 24" high has one shelf.
- Height 24-1/16" - 36" high has two shelves.
- Height 36-1/16" – 48" high has three shelves.
- Height 48-1/16" – 60" high has four shelves.
- Height 60-1/16" – 72" high has five shelves.
- Height 72-1/16" – 84" high has six shelves.
- Height > 84" high has seven shelves.

Wall Options Key: **MCC** = Matching Case Color **NHH** = No Hinge Holes **NSH** = No Shelf Holes **NDSH** = No Drawer Slide Holes **OS** = Omit Shelving

Design Notes:

Standard edgeband color matches cabinet interior color (Coastal White or Fog Grey). Edgeband that matches doors/drawer fronts is available and must be specified. Upcharge applies. Use fillers when installing cabinets adjacent to walls and other cabinets to ensure adequate clearance for doors and drawers. Conestoga recommends that exposed ends be capped with 19mm thick applied decorative end panels (optional and must be specified). When this treatment is used, adjust cabinet width(s) accordingly.