

Vesta Tall Cabinet Standard Features and Options:

The features below are standard on all Tall cabinets where the design permits. Standard features can be omitted as needed. The option to omit standard features as well as add additional design options can be quickly referenced at the bottom of each page in the Tall Cabinet Section labeled “Tall Options Key”. For detailed descriptions and images of the options, see Options, Section 20 of this manual. Standard features and options are available on all Tall cabinets unless specifically noted as **Unavailable Options**.

Edgeband – On our Tall cabinets the sides, tops, bottoms, mid-floors, and shelves are edgebanded on the front edges only. Interior parts such as uprights or other support members are edgebanded on visible edges. Edgeband color must be specified to either match the case color (standard offering) or door color if applicable (upcharge applies). When Door Matching Edgeband Option is selected the front edges of the sides, tops, bottoms and mid-floors are edgebanded using the door color. The edgeband on the shelves and interior parts matches the interior case color. Door Matching Edgeband Option is available with all Allure DLV, Intrigue TTS, Strata TTS, Vogue TTS, Synchronicity High Gloss and Super Matte colors, as well as matching specie wood edgeband in Cherry, Hard Maple, Paint Grade, Red Oak, Rift Cut White Oak and Walnut.

5mm Shelf Holes – 5mm Shelf Holes are pre-drilled on 32mm centers on all cabinets with shelves. **No Shelf Holes** (NSH) and **Omit Shelving** (OS) Options are available on any Tall cabinet with shelves. If both the NSH and OS Options are required, both must be individually specified.

Hinge Hole Drilling – All Tall cabinets eligible to receive doors will include Blum Frameless INSERTA Hinges and are pre-drilled with 5mm holes to accept the EXPANDO Mounting Plates. A **No Hinge Hole** (NHH) Option is available on Tall cabinets that would typically include doors. Cabinet hinges can also be omitted, but must be changed from the default Yes to No. The No Hinge Hole Option does not remove hinges; No Hinges must be specified.

Drawer Slide Hole Drilling – All Tall cabinets that include drawer boxes also include Blum TANDEM Drawer Slides and are pre-drilled with 5mm holes for quick and easy installation. The **No Drawer Slide Hole** (NDSH) Option is available only on cabinets with drawer boxes. Drawer slides can be omitted, but must be changed from the default Yes to No. The No Drawer Slide Hole Option does not automatically remove drawer slides; No Drawer Slides must be specified.

Toe Kick – Most Tall cabinets come with a 3-3/4” x 4” Toe Kick Notch standard. Cabinets with a Toe Kick are available with either the **Flush Toe** (FT) and **Square Toe Notch** (STN) Options. The Flush Toe Option removes the toe kick from the cabinet and brings the toe backer flush with the cabinet front edge. The Square Toe Notch Option makes the intersecting corner of the Toe Notch 90° to aid in Toeboard installation.

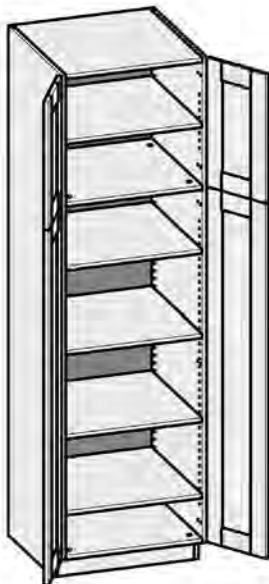
Matching Case Color (MCC) – With the Matching Case Color Option, the door and drawer front color matches the cabinet interior, exterior and edgeband. The Matching Case Color Option is available with most Tall cabinets and produced in all Intrigue TTS, Strata TTS and Vogue TTS colors, as well as wood matching specie edgeband in Cherry, Hard Maple, Paint Grade, Red Oak, Rift Cut White Oak and Walnut.

Loose Toe Platform (LTP) – With the Loose Toe Platform Option, the cabinet height is automatically reduced by 4” and is produced without a Toe Kick. A 4” platform is provided to achieve the desired finished cabinet height. When ordering the Loose Toe Platform Option enter the desired cabinet height, deductions for the toe platform are calculated by Conestoga. Loose Toe Platform is available with most Tall cabinets. The Flush Toe and Square Toe Notch Options are not available with the Loose Toe Platform Option.

Tall Options Key: FT = Flush Toe LTP = Loose Toe Platform STN = Square Toe Notch MCC = Matching Color Case NHH = No Hinge Holes
NSH = No Shelf Holes NDSH = No Drawer Slide Holes OS = Omit Shelving

Design Notes:

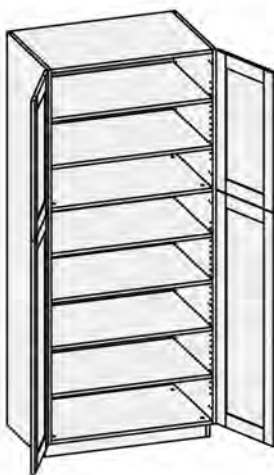
Standard edgeband color matches cabinet interior color (Coastal White, Fog Grey or White Birch). If eligible, edgeband that matches doors/drawer fronts must be specified. Upcharge applies. Use fillers when installing cabinets adjacent to walls and other cabinets to ensure adequate clearance for doors and drawers. Conestoga recommends that exposed ends be capped with 19mm thick applied decorative end panels (optional and must be specified). When this treatment is used, adjust cabinet width(s) accordingly.

UCD/CSUC - Utility Cabinet


Custom Size Ranges
 Single Door Width: 12" – 24"
 Butt Door Width: 24" – 36"
 Height: 84" – 96"
 Depth: 8" – 30"

- When height changes, upper opening height changes. Lower opening height fixed at 57-1/2".
- 84" – 90" high has six shelves.
- 90-1/16" – 96" high has seven shelves.
- Separate 4" high toe platform available in all cabinet heights.
- Specify single or butt doors on custom size cabinets 24" wide.

Single Door Cabinets – 24" Deep			Butt Door Cabinets – 24" Deep		
84" High	90" High	96" High	84" High	90" High	96" High
UCD1584	UCD1590	UCD1596	UCD2484BD	UCD2490BD	UCD2496BD
UCD1884	UCD1890	UCD1896	UCD2784BD	UCD2790BD	UCD2796BD
UCD2184	UCD2190	UCD2196	UCD3084BD	UCD3090BD	UCD3096BD
UCD2484	UCD2490	UCD2496	UCD3384BD	UCD3390BD	UCD3396BD
			UCD3684BD	UCD3690BD	UCD3696BD

UCDW/CSUCW - Utility Cabinet Wall Height Top Section


Custom Size Ranges
 Single Door Width:
 12" – 24"
 Butt Door Width:
 24" – 36"
 Height: 84" – 96"
 Depth: 8" – 30"

- Top section aligns with corresponding wall cabinet height as follows:
 84" high – 30" wall cabinets.
 90" high – 36" wall cabinets.
 96" high – 42" wall cabinets.
- When cabinet height changes, top opening height changes accordingly. Opening height below mid-floor is fixed at 49".
- 84" – 90" high has six shelves.
- 90-1/16" – 96" high has seven shelves.
- Separate 4" high toe platform available in all cabinet heights.
- Specify single or butt doors on custom size cabinets 24" wide.

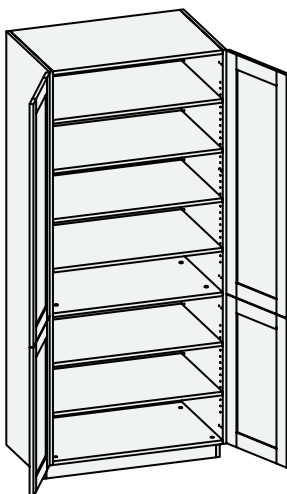
Single Door Cabinets – 24" Deep			Butt Door Cabinets – 24" Deep		
84" High	90" High	96" High	84" High	90" High	96" High
UCDW1584	UCDW1590	UCDW1596	UCDW2484BD	UCDW2490BD	UCDW2496BD
UCDW1884	UCDW1890	UCDW1896	UCDW2784BD	UCDW2790BD	UCDW2796BD
UCDW2184	UCDW2190	UCDW2196	UCDW3084BD	UCDW3090BD	UCDW3096BD
UCDW2484	UCDW2490	UCDW2496	UCDW3384BD	UCDW3390BD	UCDW3396BD
			UCDW3684BD	UCDW3690BD	UCDW3696BD

Tall Options Key: FT = Flush Toe LTP = Loose Toe Platform STN = Square Toe Notch MCC = Matching Color Case NHH = No Hinge Holes
 NSH = No Shelf Holes NDSH = No Drawer Slide Holes OS = Omit Shelving

Design Notes:

Standard edgeband color matches cabinet interior color (Coastal White, Fog Grey or White Birch). If eligible, edgeband that matches doors/drawer fronts must be specified. Upcharge applies. Use fillers when installing cabinets adjacent to walls and other cabinets to ensure adequate clearance for doors and drawers. Conestoga recommends that exposed ends be capped with 19mm thick applied decorative end panels (optional and must be specified). When this treatment is used, adjust cabinet width(s) accordingly.

UCDR/CSUCR - Utility Cabinet Reverse w/Butt Doors



Custom Size Ranges
Single Door Width:
12" – 24"
Butt Door Width:
24" – 36"
Height: 84" – 96"
Depth: 8" – 30"

- When cabinet height changes, upper opening height changes. Opening height below mid-floor fixed at 29-5/16".
- 84" – 90" high has six shelves.
- 90-1/16" – 96" high has seven shelves.
- Separate 4" high toe platform available in all cabinet heights.
- Specify single or butt doors on custom size cabinets 24" wide.

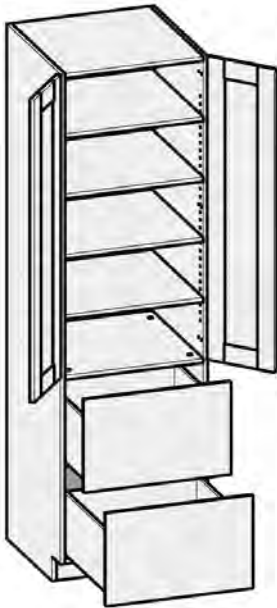
Single Door Cabinets – 24" Deep			Butt Door Cabinets – 24" Deep		
84" High	90" High	96" High	84" High	90" High	96" High
UCDR1584	UCDR1590	UCDR1596	UCDR2484BD	UCDR2490BD	UCDR2496BD
UCDR1884	UCDR1890	UCDR1896	UCDR2784BD	UCDR2790BD	UCDR2796BD
UCDR2184	UCDR2190	UCDR2196	UCDR3084BD	UCDR3090BD	UCDR3096BD
UCDR2484	UCDR2490	UCDR2496	UCDR3384BD	UCDR3390BD	UCDR3396BD
			UCDR3684BD	UCDR3690BD	UCDR3696BD

Tall Options Key: FT = Flush Toe LTP = Loose Toe Platform STN = Square Toe Notch MCC = Matching Color Case NHH = No Hinge Holes
NSH = No Shelf Holes NDSH = No Drawer Slide Holes OS = Omit Shelving

Design Notes:

Standard edgeband color matches cabinet interior color (Coastal White, Fog Grey or White Birch). If eligible, edgeband that matches doors/drawer fronts must be specified. Upcharge applies. Use fillers when installing cabinets adjacent to walls and other cabinets to ensure adequate clearance for doors and drawers. Conestoga recommends that exposed ends be capped with 19mm thick applied decorative end panels (optional and must be specified). When this treatment is used, adjust cabinet width(s) accordingly.

U2D/CSU2D - Utility Two Drawer



Custom Size Ranges

Single Door Width:

12" – 24"

Butt Door Width:

24" – 36"

Height: 84" – 96"

Depth: 12", 13", 15",

16", 18", 21",

24", 27", 30"

- When height changes, upper opening height changes.
- Lower drawer section aligns with 34-1/2" high Base cabinets. Drawer front heights are equal.
- 84" – 90" high has four shelves.
- 90-1/16" – 96" high has five shelves.
- Specify single or butt doors on custom size cabinets 24" wide.

Single Door Cabinets – 24" Deep

84" High	90" High	96" High
U2D1884	U2D1890	U2D1896
U2D2184	U2D2190	U2D2196
U2D2484	U2D2490	U2D2496

Butt Door Cabinets – 24" Deep

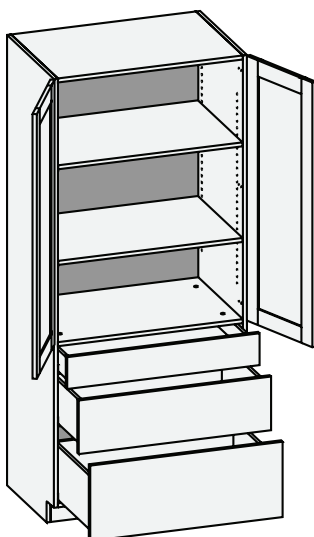
84" High	90" High	96" High
U2D2484BD	U2D2490BD	U2D2496BD
U2D2784BD	U2D2790BD	U2D2796BD
U2D3084BD	U2D3090BD	U2D3096BD
U2D3384BD	U2D3390BD	U2D3396BD
U2D3684BD	U2D3690BD	U2D3696BD

Tall Options Key: FT = Flush Toe LTP = Loose Toe Platform STN = Square Toe Notch MCC = Matching Color Case NHH = No Hinge Holes
NSH = No Shelf Holes NDSH = No Drawer Slide Holes OS = Omit Shelving

Design Notes:

Standard edgeband color matches cabinet interior color (Coastal White, Fog Grey or White Birch). If eligible, edgeband that matches doors/drawer fronts must be specified. Upcharge applies. Use fillers when installing cabinets adjacent to walls and other cabinets to ensure adequate clearance for doors and drawers. Conestoga recommends that exposed ends be capped with 19mm thick applied decorative end panels (optional and must be specified). When this treatment is used, adjust cabinet width(s) accordingly.

U3D/CSU3D - Utility Three Drawer



Custom Size Ranges

Single Door Width:

12" – 24"

Butt Door Width:

24" – 36"

Height: 84" – 96"

Depth: 12", 13", 15",

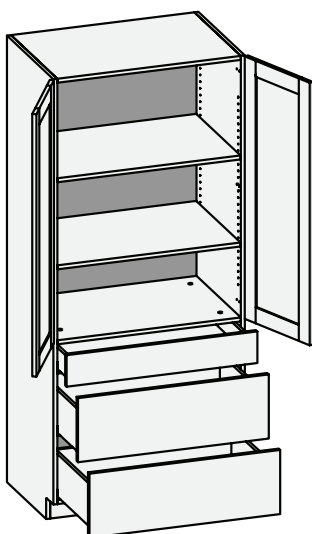
16", 18", 21",

24", 27", 30"

- When height changes, upper opening height changes.
- Lower drawer section aligns with 34-1/2" high Base cabinets. Drawer front heights fixed at 5-15/16", 10" and 14-1/16".
- 84" – 90" high has four shelves.
- 90-1/16" – 96" high has five shelves.
- Specify single or butt doors on custom size cabinets 24" wide.

Single Door Cabinets – 24" Deep			Butt Door Cabinets – 24" Deep		
84" High	90" High	96" High	84" High	90" High	96" High
U3D1884	U3D1890	U3D1896	U3D2484BD	U3D2490BD	U3D2496BD
U3D2184	U3D2190	U3D2196	U3D2784BD	U3D2790BD	U3D2796BD
U3D2484	U3D2490	U3D2496	U3D3084BD	U3D3090BD	U3D3096BD
			U3D3384BD	U3D3390BD	U3D3396BD
			U3D3684BD	U3D3690BD	U3D3696BD

U3DEH/CSU3DEH - Utility Three Drawer w/Two Equal Height Lower Drawers



Custom Size Ranges

Single Door Width:

12" – 24"

Butt Door Width:

24" – 36"

Height: 84" – 96"

Depth: 12", 13", 15",

16", 18", 21",

24", 27", 30"

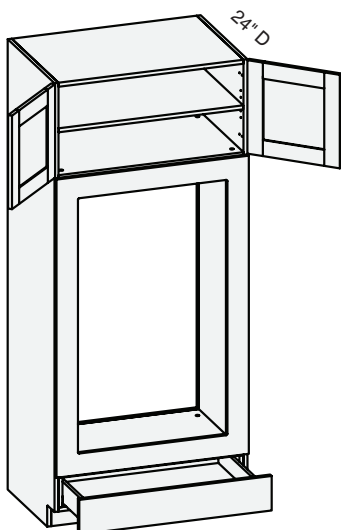
- When height changes, upper opening height changes.
- Lower drawer section aligns with 34-1/2" high Base cabinets. Drawer front heights fixed at 5-15/16", 12" and 12-1/16".
- 84" – 90" high has four shelves.
- 90-1/16" – 96" high has five shelves.
- Specify single or butt doors on custom size cabinets 24" wide.

Single Door Cabinets – 24" Deep		
84" High	90" High	96" High
U3DEH1884	U3DEH1890	U3DEH1896
U3DEH2184	U3DEH2190	U3DEH2196
U3DEH2484	U3DEH2490	U3DEH2496
Butt Door Cabinets – 24" Deep		
84" High	90" High	96" High
U3DEH2484BD	U3DEH2490BD	U3DEH2496BD
U3DEH2784BD	U3DEH2790BD	U3DEH2796BD
U3DEH3084BD	U3DEH3090BD	U3DEH3096BD
U3DEH3384BD	U3DEH3390BD	U3DEH3396BD
U3DEH3684BD	U3DEH3690BD	U3DEH3696BD

Tall Options Key: FT = Flush Toe LTP = Loose Toe Platform STN = Square Toe Notch MCC = Matching Color Case NHH = No Hinge Holes
NSH = No Shelf Holes NDSH = No Drawer Slide Holes OS = Omit Shelving

Design Notes:

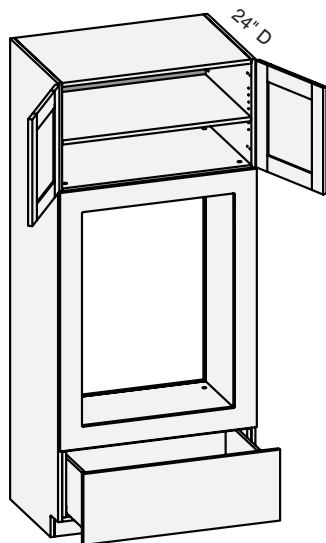
Standard edgeband color matches cabinet interior color (Coastal White, Fog Grey or White Birch). If eligible, edgeband that matches doors/drawer fronts must be specified. Upcharge applies. Use fillers when installing cabinets adjacent to walls and other cabinets to ensure adequate clearance for doors and drawers. Conestoga recommends that exposed ends be capped with 19mm thick applied decorative end panels (optional and must be specified). When this treatment is used, adjust cabinet width(s) accordingly.

ODA/CSODA - Oven Double Opening Type A w/Butt Doors


Custom Size Ranges
 Width: 27" – 36"
 Height: 84" – 96"
 Depth: 24", 27", 30"

- Customer to specify height and width of oven opening.
- Maximum oven opening height is 49-5/8".
- Maximum oven opening width is cabinet width minus 6".
- Oven shelf is 11" above the floor.
- When height changes, upper opening height changes. Lower and middle opening heights are fixed.
- 84" – 95" high has one shelf.
- 95-1/16" – 96" high has two shelves.
- Separate 4" high toe platform available in all cabinet heights.

84" High	90" High	96" High
ODA2784BD	ODA2790BD	ODA2796BD
ODA3084BD	ODA3090BD	ODA3096BD
ODA3384BD	ODA3390BD	ODA3396BD

ODB/CSODB - Oven Double Opening Type B w/Butt Doors


Custom Size Ranges
 Width: 27" – 36"
 Height: 84" – 96"
 Depth: 24", 27", 30"

- Customer to specify height and width of oven opening.
- Maximum oven opening height is 41-1/8".
- Maximum oven opening width is cabinet width minus 6".
- Oven shelf is 17-1/2" above the floor.
- When height changes, upper opening height changes. Lower and middle opening heights are fixed.
- 84" – 95" high has one shelf.
- 95-1/16" – 96" high has two shelves.
- Separate 4" high toe platform available in all cabinet heights.

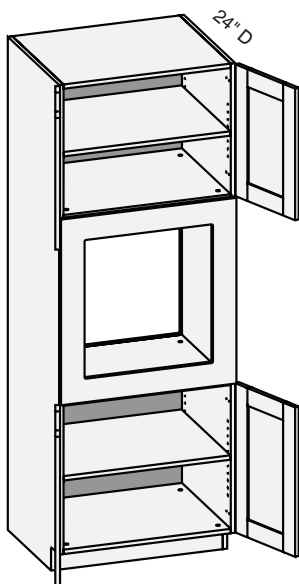
84" High	90" High	96" High
ODB3084BD	ODB3090BD	ODB3096BD
ODB3384BD	ODB3390BD	ODB3396BD

Tall Options Key: FT = Flush Toe LTP = Loose Toe Platform STN = Square Toe Notch MCC = Matching Color Case NHH = No Hinge Holes
 NSH = No Shelf Holes NDSH = No Drawer Slide Holes OS = Omit Shelving

Design Notes:

Standard edgeband color matches cabinet interior color (Coastal White, Fog Grey or White Birch). If eligible, edgeband that matches doors/drawer fronts must be specified. Upcharge applies. Use fillers when installing cabinets adjacent to walls and other cabinets to ensure adequate clearance for doors and drawers. Conestoga recommends that exposed ends be capped with 19mm thick applied decorative end panels (optional and must be specified). When this treatment is used, adjust cabinet width(s) accordingly.

CSOS - Oven Single Opening w/Butt Doors



Custom Size Ranges

Width: 27" – 36"

Height: 84" – 96"

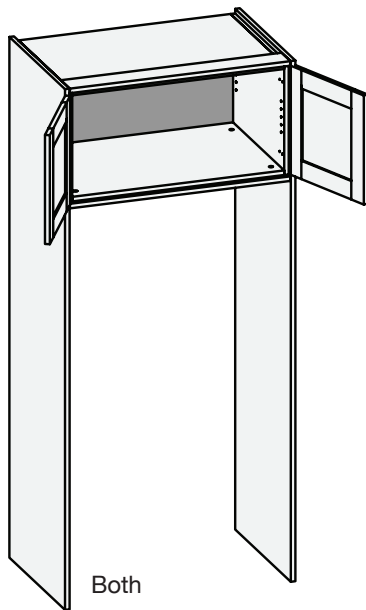
Depth: 24" – 30"

- Customer to specify height and width of oven opening.
- Maximum oven opening height is 25-5/8".
- Maximum oven opening width is cabinet width minus 6".
- Oven shelf is fixed at 30" above the floor.
- When height changes, upper opening height changes. Lower and middle opening heights are fixed.
- Lower opening is fixed at 24-5/8".
- 84" – 89" high has two shelves.
- 89-1/16" – 95" high has three shelves.
- 95-1/6" – 96" high has four shelves.
- Separate 4" high toe platform available in all cabinet heights.

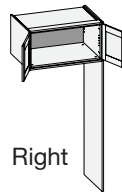
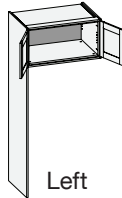
Tall Options Key: FT = Flush Toe LTP = Loose Toe Platform STN = Square Toe Notch MCC = Matching Color Case NHH = No Hinge Holes
NSH = No Shelf Holes NDSH = No Drawer Slide Holes OS = Omit Shelving

Design Notes:

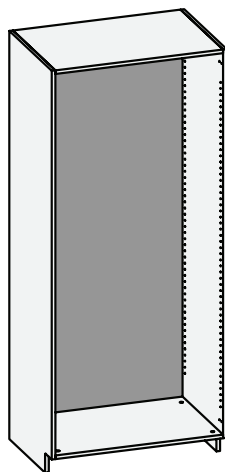
Standard edgeband color matches cabinet interior color (Coastal White, Fog Grey or White Birch). If eligible, edgeband that matches doors/drawer fronts must be specified. Upcharge applies. Use fillers when installing cabinets adjacent to walls and other cabinets to ensure adequate clearance for doors and drawers. Conestoga recommends that exposed ends be capped with 19mm thick applied decorative end panels (optional and must be specified). When this treatment is used, adjust cabinet width(s) accordingly.

CSRTEPC - Refrigerator Tall End Panel Cabinet w/ Butt Doors


Custom Size Ranges
 Width: 24" – 42"
 Height: 84" – 96"
 Depth: 24" – 30"



- CSRTEPC is a preconfigured Tall cabinet designed to enclose a refrigerator with decorative end panels.
- When ordering CSRTEPC specify the desired cabinet width, overall height, depth, and top cabinet height without end panels. The system will calculate the appropriate end panels to give doors an inset appearance.
- Assembled unit with end panels attached will be 1-1/2" wider, 3/4" taller, and 7/8" deeper than the size ordered. Top cabinet height will be 1-1/2" taller than size ordered.
- Specify Left, Right, or Both for the panel leg extension.
- 18-1/16" – 24" high upper cabinet has one shelf.
- 24-1/16" – 27" high upper cabinet has two shelves.
- Specify single or butt doors on custom size cabinets 24" wide.
- Unavailable Options: FT, LTP, STN.

CSCO - Case Only


Custom Size Ranges
 Width: 12" – 36"
 Height: 10" – 96"
 Depth: 8" – 30"



Shelf



Loose fixed floor kit

- Customizable cabinet case for custom base and tall applications.
- Sides are machined with shelf holes.
- Loose Fixed Floor Kits are sized to fit between sides. Specify quantity of Loose Fixed Floor Kits per cabinet.
- Specify quantity of shelves per cabinet.

Tall Options Key: FT = Flush Toe LTP = Loose Toe Platform STN = Square Toe Notch MCC = Matching Color Case NHH = No Hinge Holes
 NSH = No Shelf Holes NDSH = No Drawer Slide Holes OS = Omit Shelving

Design Notes:

Standard edgeband color matches cabinet interior color (Coastal White, Fog Grey or White Birch). If eligible, edgeband that matches doors/drawer fronts must be specified. Upcharge applies. Use fillers when installing cabinets adjacent to walls and other cabinets to ensure adequate clearance for doors and drawers. Conestoga recommends that exposed ends be capped with 19mm thick applied decorative end panels (optional and must be specified). When this treatment is used, adjust cabinet width(s) accordingly.