

Vesta Home Office/Media Standard Features and Options:

The features below are standard on all Home Office/Media cabinets where the design permits. Standard features can be omitted as needed. The option to omit standard features as well as add design options can be quickly referenced at the bottom of each page in the Home Office/Media Section labeled “Home Office/Media Options Key”. For detailed descriptions and images of the options, see Options, Section 20 of this manual. Standard features and options are available on all Home Office/Media cabinets unless specifically noted as **Unavailable Options**.

Edgeband – Our Home Office/Media cabinets sides, tops, bottoms, mid-floors, and shelves are edgebanded on the front edges only. Interior parts such as uprights or other support members are edgebanded on visible edges. Edgeband color must be specified to either match the case color (standard offering) or door color if applicable (upcharge applies). When Door Matching Edgeband Option is selected the front edges of the sides, top, bottom, and mid-floor are edgebanded using the door color. The edgeband on shelves and interior parts will match the interior case color. The Door Matching Edgeband Option is available with all Allure DLV, Intrigue TTS, Strata TTS, Vogue TTS, Synchronicity High Gloss and Super Matte colors, as well as wood matching specie edgeband in Cherry, Hard Maple, Paint Grade, Red Oak, Rift Cut White Oak and Walnut.

5mm Shelf Holes – 5mm Shelf Holes are pre-drilled on 32mm centers on all cabinets with shelves. **No Shelf Holes** (NSH) and **Omit Shelving** (OS) Options are available on any Home Office/Media cabinet with shelves. If both the No Shelf Holes and Omit Shelving Options are required, both must be individually specified.

Hinge Hole Drilling – All Home Office/Media cabinets eligible to receive doors will include Blum Frameless INSERTA Hinges and are pre-drilled with 5mm holes to accept the EXPANDO Mounting Plates. A **No Hinge Hole** (NHH) Option is available on Home Office/Media cabinets that would typically include doors. Cabinet hinges can also be omitted, but must be changed from the default Yes to No. The No Hinge Holes Option does not remove hinges; No Hinges must be specified.

Drawer Slide Hole Drilling – All Home Office/Media cabinets that include drawer boxes also include Blum TANDEM Drawer Slides and are pre-drilled with 5mm holes for quick and easy installation. The **No Drawer Slide Hole** (NDSH) Option is available only on cabinets with drawer boxes. Drawer slides can be omitted, but must be changed from the default Yes to No. The No Drawer Slide Holes Option does not automatically remove drawer slides; No Drawer Slides must be specified.

Toe Kick – Most Home Office/Media Base and Home Office/Media Tall cabinets come with a 3-3/4” x 4” Toe Kick Notch standard. Cabinets with a Toe Kick are available with either the **Flush Toe** (FT) and **Square Toe Notch** (STN) Options. The Flush Toe Option removes the Toe Kick from the cabinet and brings the Toe Backer flush with the cabinet front edge. The Square Toe Notch Option makes the intersecting corner of the Toe Notch 90° to aid in toeboard installation.

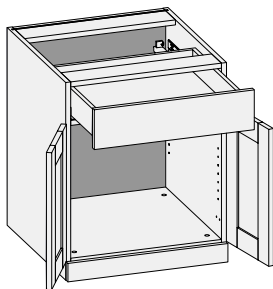
Matching Case Color (MCC) – With the Matching Case Color Option, the door and drawer front color matches the cabinet interior, exterior and edgeband. The Matching Case Color Option is available with most Home Office/Media cabinets and produced in all Intrigue TTS, Strata TTS and Vogue TTS colors, as well as wood matching species edgeband in Cherry, Hard Maple, Paint Grade, Red Oak, Rift Cut White Oak and Walnut.

Loose Toe Platform (LTP) – With the Loose Toe Platform Option, the cabinet height is automatically reduced by 4” and is produced without a Toe Kick. A 4” platform is provided to achieve the desired finished cabinet height. When ordering the Loose Toe Platform Option, enter the desired cabinet height, deductions for the toe platform are calculated by Conestoga. Loose Toe Platform is available with most Home Office/Media Base and Tall cabinets. The Flush Toe and Square Toe Notch Options are not available with the Loose Toe Platform Option.

Home Office/Media Options Key: FT = Flush Toe LTP = Loose Toe Platform STN = Square Toe Notch MCC = Matching Case Color
NHH = No Hinge Holes NSH = No Shelf Holes NDSH = No Drawer Slide Holes

Design Notes:

Standard edgeband color matches cabinet interior (Coastal White, Fog Grey or White Birch). Edgeband that matches doors/drawer fronts is available and must be specified. Upcharge applies. Use fillers when installing cabinets adjacent to walls and other cabinets to ensure adequate clearance for doors and drawers. Conestoga recommends that exposed ends be capped with 19mm thick applied decorative end panels (optional and must be specified). When this treatment is used, adjust cabinet width(s) accordingly.

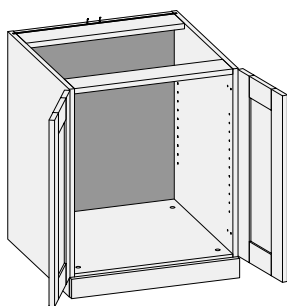
DB/CSDB - Desk Base


2-1/2" Bottom Rail

Custom Size Ranges
 Single Door Width: 12" – 24"
 Butt Door Width: 24" – 36"
 Height: 29-1/2"
 Depth: 18", 21", 24"

- Specify single or butt doors on custom size cabinets 24" wide.
- 2-1/2" high Flush Toe standard with 2-3/4" high decorative slab to conceal toe backer.
- Decorative slab can be omitted.
- Decorative slab mounts in front of toe kick and is produced in matching color when Coastal White, Fog Grey, White Birch or any eligible Matching Case Color (MCC) is ordered. If other color or specie is desired, omit decorative slab basic cabinet color and order the desired color or specie as a loose decorative slab.

Single Door Cabinets – 24" Deep		Butt Door Cabinet – 24" Deep
DB1229.5	DB2129.5	DB2429.5BD
DB1529.5	DB2429.5	
DB1829.5		

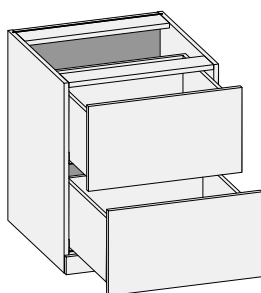
DBFD/CSDBFD - Desk Base Full Door


2-1/2" Bottom Rail

Custom Size Ranges
 Single Door Width: 12" – 24"
 Butt Door Width: 24" – 36"
 Height: 29-1/2"
 Depth: 18" – 30"

- Specify single or butt doors on custom size cabinets 24" wide.
- 2-1/2" high Flush Toe standard with 2-3/4" high decorative slab to conceal toe backer.
- Decorative slab can be omitted.
- Decorative slab mounts in front of toe kick and is produced in matching color when Coastal White, Fog Grey, White Birch or any eligible Matching Case Color (MCC) is ordered. If other color or specie is desired, omit decorative slab basic cabinet color and order the desired color or specie as a loose decorative slab.

Single Door Cabinets – 24" Deep		Butt Door Cabinet – 24" Deep
DBFD1229.5	DBFD2129.5	DBFD2429.5BD
DBFD1529.5	DBFD2429.5	
DBFD1829.5		

DB2D/CSDB2D - Desk Base Two Drawers


2-1/2" Bottom Rail

Custom Size Ranges
 Width: 12" – 36"
 Height: 29-1/2"
 Depth: 18", 21", 24"

- Both drawers designed to accommodate Pendaflex files.
- 15" width Pendaflex files must be installed front to back.
- 2-1/2" high Flush Toe standard with 2-3/4" high decorative slab to conceal toe backer.
- Decorative slab can be omitted.
- Decorative slab mounts in front of toe kick and is produced in matching color when Coastal White, Fog Grey, White Birch or any eligible Matching Case Color (MCC) is ordered. If other color or specie is desired, omit decorative slab basic cabinet color and order the desired color or specie as a loose decorative slab.

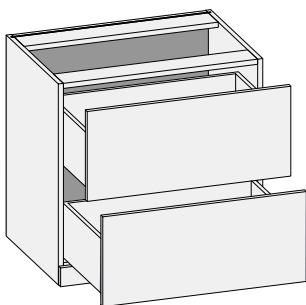
24" Deep	
DB2D1529.5	DB2D2129.5
DB2D1829.5	

Home Office/Media Options Key: FT = Flush Toe LTP = Loose Toe Platform STN = Square Toe Notch MCC = Matching Case Color
 NHH = No Hinge Holes NSH = No Shelf Holes NDSH = No Drawer Slide Holes

Design Notes:

Standard edgeband color matches cabinet interior (Coastal White, Fog Grey or White Birch). Edgeband that matches doors/drawer fronts is available and must be specified. Upcharge applies. Use fillers when installing cabinets adjacent to walls and other cabinets to ensure adequate clearance for doors and drawers. Conestoga recommends that exposed ends be capped with 19mm thick applied decorative end panels (optional and must be specified). When this treatment is used, adjust cabinet width(s) accordingly.

LF2D/CSLF2D - Lateral File Two Drawer



2-1/2" Bottom Rail

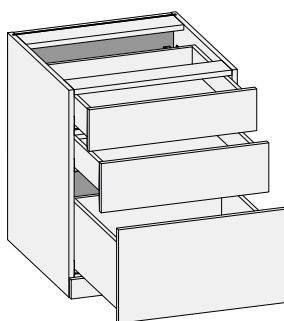
Custom Size Ranges
Width: 30" – 36"
Height: 29-1/2"
Depth: 21"

- Full extension interlocking drawer slides only.
- 2-1/2" high Flush Toe standard with 2-3/4" high decorative slab to conceal toe backer.
- Decorative slab can be omitted.
- Decorative slab mounts in front of toe kick and is produced in matching color when Coastal White, Fog Grey, White Birch or any eligible Matching Case Color (MCC) is ordered. If other color or specie is desired, omit decorative slab basic cabinet color and order the desired color or specie as a loose decorative slab.

21" Deep

LF2D3029.5	LF2D3629.5
------------	------------

DB3D/CSDB3D - Desk Base Three Drawers



2-1/2" Bottom Rail

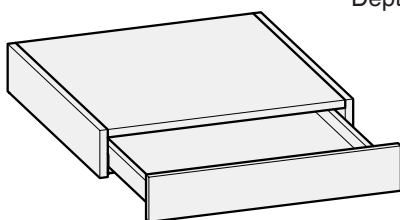
Custom Size Ranges
Width: 12" – 36"
Height: 29-1/2"
Depth: 18", 21", 24"

- Bottom drawer designed to accommodate Pendaflex files.
- 15" width Pendaflex files must be installed front to back.
- 2-1/2" high Flush Toe standard with 2-3/4" high decorative slab to conceal toe backer.
- Decorative slab can be omitted.
- Decorative slab mounts in front of toe kick and is produced in matching color when Coastal White, Fog Grey, White Birch or any eligible Matching Case Color (MCC) is ordered. If other color or specie is desired, omit decorative slab basic cabinet color and order the desired color or specie as a loose decorative slab.

24" Deep

DB3D1529.5	DB3D2129.5
DB3D1829.5	DB3D2429.5

DD/CSDD - Desk Drawer



Custom Size Ranges
Width: 12" – 36"
Height: 4-1/2"
Depth: 18", 21", 24"

- No bottom or bottom rail.

24" Deep

DD184.5	DD304.5
DD214.5	DD334.5
DD244.5	DD364.5
DD274.5	

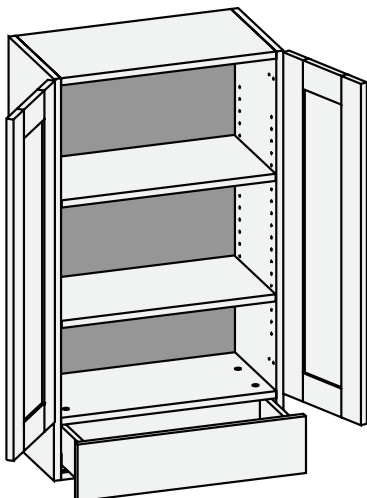
Home Office/Media Options Key: FT = Flush Toe LTP = Loose Toe Platform STN = Square Toe Notch MCC = Matching Case Color
NHH = No Hinge Holes NSH = No Shelf Holes NDSH = No Drawer Slide Holes

Design Notes:

Standard edgeband color matches cabinet interior (Coastal White, Fog Grey or White Birch). Edgeband that matches doors/drawer fronts is available and must be specified. Upcharge applies. Use fillers when installing cabinets adjacent to walls and other cabinets to ensure adequate clearance for doors and drawers. Conestoga recommends that exposed ends be capped with 19mm thick applied decorative end panels (optional and must be specified). When this treatment is used, adjust cabinet width(s) accordingly.

W1D/CSW1D - Wall One Drawer w/Butt Doors

Custom Size Ranges
 Single Door Width: 12" – 24"
 Butt Door Width: 24" – 36"
 Height: 30" – 72"
 Depth: 13", 16", 18", 21", 24"



- When height changes, upper opening height changes. Lower drawer front height fixed at 5-15/16".
- 30" – 35-15/16" high has one shelf.
- 36" – 47-15/16" high has two shelves.
- 48" – 59-15/16" high has three shelves.
- 60" – 72" high has four shelves.
- Specify single or butt doors on custom size cabinets 24" wide.

Single Door Cabinets – 13" Deep

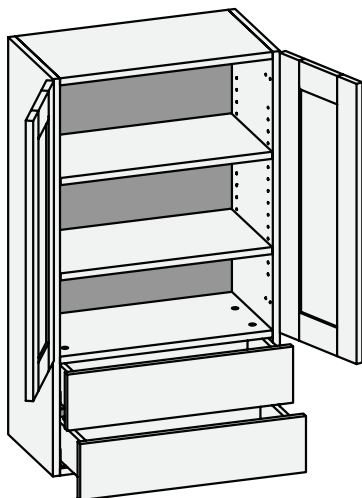
53" High	59" High	65" High
W1D1553	W1D1559	W1D1565
W1D1853	W1D1859	W1D1865
W1D2153	W1D2159	W1D2165
W1D2453	W1D2459	W1D2465

Butt Door Cabinets – 13" Deep

53" High	59" High	65" High
W1D2453BD	W1D2459BD	W1D2465BD
W1D2753BD	W1D2759BD	W1D2765BD
W1D3053BD	W1D3059BD	W1D3065BD
W1D3353BD	W1D3359BD	W1D3365BD
W1D3653BD	W1D3659BD	W1D3665BD

W2D/CSW2D - Wall Two Drawer

Custom Size Ranges
 Width: 24" – 36"
 Height: 30" – 66"
 Depth: 13", 16", 18", 21", 24"



- When height changes, upper opening height changes. Lower opening contains two drawer fronts with height fixed at 5-15/16".
- 30" – 41-15/16" high has one shelf.
- 42" – 47-15/16" high has two shelves.
- 48" – 59-15/16" high has three shelves.
- 60" – 66" high has four shelves.
- Specify single or butt doors on custom size cabinets 24" wide.

Single Door Cabinets – 13" Deep

48" High	54" High	60" High
W2D1548	W2D1554	W2D1560
W2D1848	W2D1854	W2D1860
W2D2148	W2D2154	W2D2160
W2D2448	W2D2454	W2D2460

Butt Door Cabinets – 13" Deep

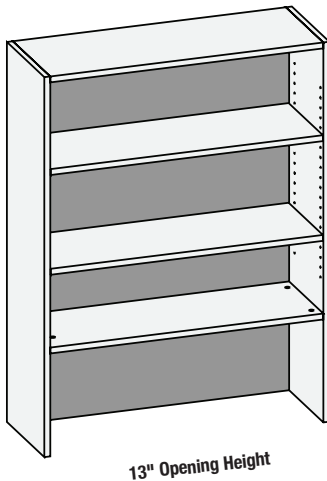
48" High	54" High	60" High
W2D2448BD	W2D2454BD	W2D2460BD
W2D2748BD	W2D2754BD	W2D2760BD
W2D3048BD	W2D3054BD	W2D3060BD
W2D3348BD	W2D3354BD	W2D3360BD
W2D3648BD	W2D3654BD	W2D3660BD

Home Office/Media Options Key: FT = Flush Toe LTP = Loose Toe Platform STN = Square Toe Notch MCC = Matching Case Color
 NHH = No Hinge Holes NSH = No Shelf Holes NDSH = No Drawer Slide Holes

Design Notes:

Standard edgeband color matches cabinet interior (Coastal White, Fog Grey or White Birch). Edgeband that matches doors/drawer fronts is available and must be specified. Upcharge applies. Use fillers when installing cabinets adjacent to walls and other cabinets to ensure adequate clearance for doors and drawers. Conestoga recommends that exposed ends be capped with 19mm thick applied decorative end panels (optional and must be specified). When this treatment is used, adjust cabinet width(s) accordingly.

WOBS/CSWOBS - Wall Open Bookshelf

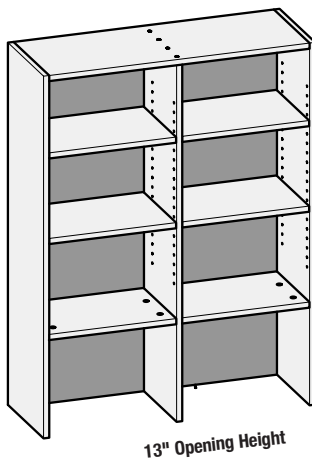


Custom Size Ranges
Width: 15" – 36"
Height: 30" – 72"
Depth: 5-1/2" – 27"

- 30" – 35-15/16" high has one shelf.
- 36" – 47-15/16" high has two shelves.
- 48" – 59-15/16" high has three shelves.
- 60" – 72" high has four shelves.

13" Deep		
53" High	59" High	65" High
WOBS1553	WOBS1559	WOBS1565
WOBS1853	WOBS1859	WOBS1865
WOBS2153	WOBS2159	WOBS2165
WOBS2453	WOBS2459	WOBS2465
WOBS2753	WOBS2759	WOBS2765
WOBS3053	WOBS3059	WOBS3065
WOBS3353	WOBS3359	WOBS3365
WOBS3653	WOBS3659	WOBS3665

WOBSCS/CSWOBSCS - Wall Open Bookshelf w/ Center Stile



Custom Size Ranges
Width: 36" – 72"
Height: 24" – 96"
Depth: 8" – 27"

- Fixed vertical partition with independently adjustable shelves.
- 24" – 35-15/16" high has two fixed shelves.
- 36" – 47-15/16" high has two fixed and two adjustable shelves.
- 48" – 59-1/16" high has two fixed and four adjustable shelves.
- 60" – 72" high has two fixed and six adjustable shelves.
- 72-1/16" – 84" has two fixed and eight adjustable shelves.
- 84-1/16" – 96" has two fixed and ten adjustable shelves.

13" Deep		
48" High	54" High	60" High
WOBSCS3648	WOBSCS3654	WOBSCS3660
WOBSCS3948	WOBSCS3954	WOBSCS3960
WOBSCS4248	WOBSCS4254	WOBSCS4260
WOBSCS4548	WOBSCS4554	WOBSCS4560
WOBSCS4848	WOBSCS4854	WOBSCS4860
WOBSCS5148	WOBSCS5154	WOBSCS5160
WOBSCS5448	WOBSCS5454	WOBSCS5460
WOBSCS5748	WOBSCS5754	WOBSCS5760
WOBSCS6048	WOBSCS6054	WOBSCS6060
WOBSCS6348	WOBSCS6354	WOBSCS6360
WOBSCS6648	WOBSCS6654	WOBSCS6660
WOBSCS6948	WOBSCS6954	WOBSCS6960
WOBSCS7248	WOBSCS7254	WOBSCS7260

Home Office/Media Options Key: FT = Flush Toe LTP = Loose Toe Platform STN = Square Toe Notch MCC = Matching Case Color
NHH = No Hinge Holes NSH = No Shelf Holes NDSH = No Drawer Slide Holes

Design Notes:

Standard edgeband color matches cabinet interior (Coastal White, Fog Grey or White Birch). Edgeband that matches doors/drawer fronts is available and must be specified. Upcharge applies. Use fillers when installing cabinets adjacent to walls and other cabinets to ensure adequate clearance for doors and drawers. Conestoga recommends that exposed ends be capped with 19mm thick applied decorative end panels (optional and must be specified). When this treatment is used, adjust cabinet width(s) accordingly.