

Finishing Program Overview

- Conestoga's finishing capabilities allow our customers to simplify their shop process by eliminating the finishing of doors, mouldings, face frames, end panels and other products. Outsourcing finishing ultimately reduces VOC emissions and helps streamline throughput by minimizing the finishing bottleneck.
- Conestoga's Cabinet System's finishing program consists of traditional wiping stains, Truetones, Colourtones, Prism Paints, glazes, primers and topcoats. Combined, these finish options create a palette of over 1,800 unique combinations.
- Conestoga has two topcoats available: 10° (low sheen) and 30° (medium sheen). Topcoat glosses will not be custom matched.
- In addition to our standard colors, custom color matching is available for wiping stains. Consult the pricing page in this section for information on custom color charges.
- **We strongly recommend that sample doors be purchased in the desired specie, color and design prior to placing full kitchen orders. This will ensure that the chosen combination meets your expectations.**

Finishing Process

- Prior to finishing, Conestoga's doors, drawer fronts and front frames are sanded on an automated sanding line to deliver a smooth, "finish-ready" product.
- To apply wiping stains and glazes, Conestoga uses a time-proven, hand-wiped technique which delivers more color consistency and depth than simple spray stain applications.
- Most Conestoga framing beads are designed with a slight back bevel, which allows the stain to penetrate beyond the juncture of the framing bead and panel raise. During the wiping stain process an air nozzle is used to blow stain under the framing bead, minimizing the possibility of "white line" appearing on the panel during expansion and contraction. All doors are matched to a control sample for color consistency during the staining process.
- After staining or painting doors and cabinet components receive a sealer and topcoat. Our sealer is a high solids material that is applied and then sanded with a fine grit sandpaper after drying. The final coat is the application of a high solids conversion varnish topcoat in either 10° or 30° sheen. Conversion varnishes provide a superior finish with exceptional clarity, resistance to moisture and excellent overall durability. Conestoga has selected the topcoat sheen that generally provides the most pleasing appearance for each finish type. However, in some cases customers do have the option of selecting an alternate topcoat sheen with no upcharge.

Finish Type	Standard Sheen	Optional Sheen
Colourtone	10°	NA
Colourtone w/glaze	10°	NA
Prism Paints	10°	NA
Truetones	10°	30°
Truetones w/glaze	10°	30°
Weathered Grain (all)	5°	10°
Wiping Stains	10°	30°
Wiping Stains w/glaze	10°	30°

- Colourtones and Prism Paints are applied using air assisted, airless spray equipment.
- After curing, parts are inspected before being packaged for delivery to our customers.

Finishing Tolerances

- Conestoga's finishing tolerances are designed for solid wood applications. Application of finish on plywood, veneers, decorative accent items and MDF may result in some color variation. Similarly, finishes applied by the customer may vary slightly from those products finished by Conestoga. See the DuraGuard System information in this section for loose finish purchase information. Instructions for application are also published in this section and enclosed with DuraGuard finish orders.
- Conestoga cannot predict how a door or cabinet part will accept finish. Therefore, if a piece meets our material specification standards in its unfinished state, it will be considered acceptable after finishing as well.

Finishing Warranties

- Conestoga's finishes carry a one year limited warranty against peeling or blistering, but no warranty against discoloration. Conestoga assumes no responsibility for damages or poor color match when finish is applied by the customer.
- Most wood species will naturally darken or yellow with age. Conestoga will not be held liable for the change in appearance of any product, finished or unfinished, due to this aging process.
- We strongly recommend that a sample door be ordered in the desired specie, design and finish prior to ordering a full kitchen, regardless of the finish and specie combination.
- Conestoga's finish materials are interior grade only and not intended for exterior use. Exposure to outdoor conditions will cause failure and will not be warranted.

Wiping Stains

- All Conestoga wiping stains are applied using a hand wiped application. The process provides superior grain penetration of the finish material and a greater degree of depth.
- Alpine wiping stain is not available over certain darker, high contrast species such as Mahogany or Walnut.
- Conestoga does not recommend darker finishes such as Espresso or Dark Roast over light species such as Hard Maple or Soft Maple. The contrast, as well as the properties of these species may create a blotchy, uneven look. Therefore, these combinations are Not Recommended (NR), but can still be produced with a 20% upcharge on the Design Charge and no warranty on color consistency.
- Because Conestoga uses wiping stains, and wiping stains penetrate into the wood grain, end grain will stain and glaze darker than other areas of the piece. This end grain contrast will not be considered defective.

Note: Utilizing Conestoga's End Grain Sealant Option will minimize end grain contrast.

Custom Wiping Stain Match Program Guidelines

- A representative sample of the custom stain color and specie to be matched must be provided. Prior to shipping the color sample to Conestoga, customers must contact Customer Service to obtain a Return Merchandise Authorization (RMA) number that must be included with the sample being submitted, along with a Custom Wiping Stain Match Form found at the end of this section and on the Customer Business Portal. A non-refundable \$250.00 net fee will be invoiced when the custom stain sample is received from the customer. Conestoga will not begin the matching process unless a Purchase Order has been provided. The matching fee applies regardless of whether the match is approved by the customer. Allow 10 business days for the completion of individual color matches.
- Accompanying the custom stain sample will be a Stain Match Approval Form. If the match is acceptable, sign and return the Approval Form to our Finishing department and we will assign a custom color mix number. This unique finish number must be referenced each time an order is placed for the custom stain. A custom stain Design and Finishing Material Charge applies to each order.
- At times, customers submit multiple stain matches for a similar color with the intention of selecting only one match. On these occasions, a \$250.00 net matching fee will apply to the primary stain match request, and a \$100.00 net fee for each subsequent stain match requested. This reduced matching fee applies only when each of the stain colors are relatively close in appearance and submitted at the same time. Any stain not close in color to the primary submission will be invoiced at the \$250.00 net fee. If an additional stain sample is submitted at a later date, it will be invoiced at the \$250.00 net fee, regardless of whether the stain is close in color to a prior submission.
- Frequently, we receive requests for multiple species with a stain match, or to add additional species and/or glaze treatments to a previously approved stain match. When these requests are received, Conestoga will generate a hard sample of the approved custom stain on each new specie or requested glaze. A Purchase Order number must be submitted along with the request as a \$30.00 net fee per individual request will be invoiced at the time the sample is received from the customer. Conestoga will retain a portion of the sample to serve as a control sample to be used for future production needs.

Custom Wiping Stain Match Program Guidelines (continued)

- Custom stain mixes are kept on record as long as the finish continues to be used. If no orders for a custom stain are placed for a period of 1 year, the mix will be voided. This guarantees our customers a truly unique stain since it is matched to their exact specifications. Conestoga will only custom match wiping stains and will do so using pigmented wiping stain materials.
- Conestoga offers two topcoat glosses, 10° and 30°, with no option to custom match glosses.
- Quarts and gallons of custom stains can be purchased. Call Customer Service for pricing.

Truetones

- Conestoga's Truetone program consists of both High and Low complexity colors.
- Low Complexity Truetones are lightly pigmented spray to color stains that include a small percentage of solids. They produce a very clean look, with minimal blotchiness. After the Truetone application, a sealer and conversion varnish topcoat are applied.
- High Complexity Truetones are a selection of deep, rich colors that are achieved through a two step application process. The first step is a hand wiped custom stain that brings out the color depth and grain clarity followed by a delicate application of a low solids spray stain. After this two-step application a sealer and conversion varnish topcoat are applied.
- Truetone finishes are available with Brown, Onyx, Oyster and Sable glazes.
- Specie availability with Cabinet Systems products includes Cherry and Hard Maple.
- Color range in an identical stain will vary from specie to specie, sometimes significantly.
- Glazed and Non-Glazed Truetone finishes receive a 10° sheen topcoat standard; however, 30° sheen topcoat is available for Non-Glazed Truetone finishes, but must be specified when placing order.
- Normal contraction and expansion of the panels may cause unfinished areas to become visible. Normally hidden by the framing bead, this visible unfinished area is known as "white line" and are not considered defective.
- Profiled areas may appear lighter in color than flat areas on both Low and High Complexity Truetones because of the color application process. The effect could be enhanced by certain profiles, such as a Square framing bead, deep grooves and anywhere there is a defined change in the plane of the part. Selecting a glaze option will minimize this effect on any Truetone color.
- As with any stain, veneers will absorb finish materials differently than solid wood. This absorption difference may result in a slight variation in appearance between solid wood and veneered components and is not considered defective.
- Truetones range in color from light to dark. Therefore, they may or may not possess the ability to disguise material variations as well as wiping stains. The use of Premium grade material will mitigate some of these variations.
- End grain will appear darker than non-end grain areas, even when a glaze is applied.
Note: Utilizing Conestoga's End Grain Sealant Option will minimize end grain contrast.

Wiping Stains and Truetones with Hand Wiped Glazes

- All Conestoga hand wiped glazes are applied using a hand wiping application process to the entire surface of both the face and back of every door and all applicable cabinet parts.
- Hand applied glazing is a very subjective treatment. Each product becomes "one-of-a-kind" and unique in appearance and could vary slightly from part to part but will blend within a job. Conestoga matches every glazed part to a control sample, however, color consistency is difficult to control with hand wiped glazed finishes. Some factors that influence color consistency of hand wiped glazed products are door design, profiles, grain patterns, wood density, base color and pre-glaze sanding processes. Conestoga will not warrant these variations and considers them to be acceptable on hand wiped glazed products.
- We recommend that our customers develop a document that would be read and signed by the designer or end user indicating their understanding of the potential color issues with any stain and glazed finish. Such a document will help set customer expectations and protect all parties in the event of a color-based issue.

Wiping Stains and Truetones with Hand Wiped Glazes (continued)

- Conestoga strongly recommends that a sample door be ordered in the desired design, specie and finish combination prior to ordering a full kitchen.
- Conestoga maintains strict standards for its glazing processes. With this in mind, Conestoga will not custom match glaze colors or glaze placement. Therefore, we offer only our standard glaze color options.
- Wiping stains and Truetones with any glaze treatment receive standard 10° sheen topcoat; however, 30° sheen topcoat is available but must be specified when placing order.
- Hand wiped glazes significantly alter the appearance of a stain/specie combination. An attractive finish may look quite different once glazed. With this in mind, Conestoga does not recommend certain finish/glaze/specie combinations, and some combinations are not available. See the Offering and Availability Charts in this section for details.
- Conestoga's standard hand wiped glaze offering is available in combination with some custom wiping stain finish matches. For availability of glazing with custom stains, contact our Finishing Department (717) 445-3252.

Primed Products

- Conestoga's priming capabilities allow you to outsource the time consuming process of prepping and priming your doors, drawer fronts, mouldings and Cabinet Systems parts. Outsourcing primed products reduces your company's VOC emissions and increases the efficiency and throughput of your finishing area.
- Conestoga offers three substrate materials with our Cabinet Systems Standard Primer Option:
 - ♦ Solid wood – Cherry, Hard Maple, Red Oak and Soft Maple Custom products are available in a wide variety of designs.
 - ♦ Hybrid products – hybrid products utilize Paint Grade Hard Maple framing in combination with 48-pound density MDF center panels. All published 1/4", 3/8", 5/8" and 3/4" center panels are available in MDF for use in a wide variety of wood framed door and drawer front designs.
 - ♦ MDF – a 48-pound density MDF material. MDF products are limited to Slab, 1-Piece and 5-Piece designs. See the MDF & Alternative Materials Section of the Custom Manual for options.
- Conestoga's primers are post catalyzed, acid cured and compatible with many high quality topcoats. Our Standard Primer application is available in white, light grey, medium grey and dark grey.
- Prior to priming, the substrate is prepared to accept the coating material. Putty is applied to the joints, open-end grain, tear outs and other visible voids. The product is then hand sanded to remove excess putty and provide a smooth, uniform surface to accept the primer coat.
- Most Conestoga framing beads are designed with a slight back bevel to allow some primer material to penetrate beneath the framing bead. However, due to the high solids content of the primer itself, bridging of the primer material may occur between the panel and the framing bead on 5-Piece products. Moderate bridging is not considered a defect.
- After curing, all components are inspected, individually wrapped, then packaged and shipped.
- There are many finishes available to paint residential cabinetry. While many of these products may work in combination with our primers, we recommend **only acid cured conversion varnish topcoats**. Testing for compatibility and adhesion between Conestoga's primers and the customer's finish materials should take place on a test door prior to finishing any large items or multi-piece projects.
- Customers should scuff sand the primer using 280-grit sandpaper no more than 24 hours before applying any finish. All surfaces must receive this sanding step to achieve a mechanical bond.
- Conestoga's primed products receive putty prior to application of primer. Smaller voids will become apparent after the primer has been applied. These voids are acceptable and will require a second application of putty by the customer prior to painting.

Primed Products (continued)

- Conestoga's primed products are subject to some natural grain raise during the priming process, which is not considered defective. Normal sanding preparation for topcoat application will remove these wood fibers.
- Conestoga's primed products are manufactured using substrate materials that will expand and contract with fluctuations in climate, temperature and humidity. The movement of the substrate may cause fracturing of the primer anywhere sub-components have been joined together. This fracturing is not considered defective and will most likely occur in the following areas:
 - ♦ Framing joints – where the stiles meet the rails on the face, back and edges of multi-piece products including front frames.
Note: To decrease the chance of joint separation, utilize the MDF center panel option.
 - ♦ Edge profiles – in both mitered and mortise and tenon joint construction at the exterior edges of the product.
 - ♦ Center panels – where the panel recesses into the framing. Bridging of the coating materials can occur between the panel and framing. Natural expansion and contraction of the substrate may fracture the bridging.
 - ♦ Panel face – where individual adjacent staves in the panel expand and contract at different rates causing minor offsets or highlighting of glue joints. Because the individual staves of the panel continue to contract and expand, lines may appear on solid wood panels and offsets may develop from one stave to another. These stave lines will not be considered defective.
Note: To eliminate panel stave offsets, utilize the MDF center panel option.
- Primed products are individually wrapped, minimizing scuff marks.
- Testing for compatibility and adhesion between Conestoga's primers and customer's finish materials should take place on a test door prior to finishing any large items or multi-piece projects. Conestoga assumes no responsibility for incorrect application of finish materials by the customer that may result in poor adhesion, color mismatch or other finish related issues. Conestoga will not warrant products due to incompatibility issues between our primers and non-DuraGuard finish materials.

Colourtones

- Colourtones are opaque finishes, identical in appearance to paint. The coatings are pigmented basecoats that must be catalyzed prior to application. Colourtones require the application of a clear coat of conversion varnish as the final coat.
- Colourtones have a high solids content, resulting in better build and lower VOC emissions.
- Colourtones with Cabinet Systems are available on Cherry, Hard Maple, Red Oak and Soft Maple.
- We recommend adding the Antiquing Option when Colourtones are ordered with Cherry. Characteristics common to Cherry, such as pin knots, mineral and pitch pockets will be present in finished products. The presence of these characteristics will not be considered defective. Refer to the Offering and Availability Chart in this section for species, finish and glaze availability.
- The machining of end grain or MDF on certain profiles may result in those surfaces being porous and the finish on these surfaces may not be as full as the finish on non-machined areas.
- Minor flaws such as dust particles, dimples and lint are more apparent with opaque finishes than with wiping stains. The presence of small amounts of these minor occurrences will be considered acceptable.
- Coatings containing high solids are susceptible to bridging between the framing and center panel. Bridging occurs when the coating material joins the two separate surfaces together. This condition is common between multiple component products and is not considered defective. Over time, the natural expansion and contraction of wood may cause this bridging to fracture.
- Colourtone products are placed on drying racks after the coating application process. Small indentations or pin marks from drying racks may appear on the backs of Colourtone products and are not considered defects.
- Colourtones may vary slightly from one batch to another, but will remain within a controlled color range.

Colourtones (continued)

- All Colourtone finishes will receive a 10° topcoat; 30° topcoat is not available.
- Because Colourtones contain a high percentage of solids, certain characteristics such as joint fracturing will occur. Hairline cracks typically develop along joints on the face, back and edge profiles and can occur during normal handling or from the expansion and contraction of wood. Joint fracturing is not considered to be a defect.
- As with most finishes, Colourtone colors will change over time due to exposure to light, pollution and household chemicals. Additions or replacements to existing kitchens may not initially match finished products already in place.
- Because the individual staves of the panel continue to contract and expand, lines may appear on solid wood panels and offsets may develop from one stave to another. These stave lines will not be considered defective.
Note: To eliminate panel stave offsets, utilize the MDF center panel option.
- Veneer checking and seam separation are inherent characteristics of plywood panels and finished veneers that may appear to be cracks within the coating. These cracks are caused by changes within the veneer and will not be considered defective.
Note: To eliminate veneer cracking, utilize the MDF center panel option.
- Customers interested in purchasing Colourtone finishing materials through the DuraGuard Program should reference DuraGuard Systems information found in this section for coatings pricing and availability.
- When purchasing multiple containers of loose Colourtone coating material, mix the contents of like finishes together prior to adding catalyst to achieve a consistent overall color.
- Catalyst must be added to all Colourtone finishes prior to application. The catalyzation process results in both a limited pot life and a recoat window. Mixture and application instructions are provided near the end of this section.
- We recommend that any topcoat other than DuraGuard products be tested for compatibility prior to application. Conestoga will not warrant products that fail due to non-compatible topcoat materials.
- Conestoga assumes no responsibility for incorrect application of DuraGuard materials by customers, which may result in poor adhesion, color mismatch or other finish related failures.

Prism Paints

- The Prism Paints program offers a selection of over 1,400 opaque colors. We do not recommend placing an order for a project in Prism Paints based on the color represented in the fan deck. We strongly recommend a door sample of the actual finish be ordered prior to placing an order for a complete job. Conestoga will not assume responsibility for color related issues resulting from orders being placed without first ordering a sample door.
- Prism Paints may differ in appearance to other types of coatings such as acrylic, latex, enamels or other paint systems with the same color name and number. Both the clear topcoat and spray application will effect texture, sheen and color of this product. It is strongly recommended that a finished sample door in the selected color be ordered prior to ordering a full kitchen.
- Prism Paints are available on 14" sample chips, but not 36" sample chips. A square foot minimum applies.
- Prism Paint coatings are acid catalyzed, pigmented basecoats, much like the Colourtone products. These coatings require the application of a final coat of clear conversion varnish.
- Prism Paints are available on Advantage and Vesta Cabinet Systems. However, Prism Paints with glaze are not.
- Prism Paints with Cabinet Systems are available on Cherry, Hard Maple, Red Oak and Soft Maple.
- The machining of end grain or MDF may result in those surfaces being porous and the finish on these surfaces may not be as full or smooth as the finish on non-machined areas.
- Minor flaws such as dust particles, dimples and lint may be present with opaque finishes. The presence of a small quantity of these flaws will be considered acceptable.

Prism Paints (continued)

- Coatings containing high solids are susceptible to bridging between the framing and center panel. Bridging occurs when the coating material joins the two separate surfaces together. This condition is common between multiple component products and is not considered defective. Over time, the natural expansion and contraction of wood may cause this bridging to fracture.
- Products having been painted with Prism Paints will be placed on drying racks. Small indentations or pin marks from the drying racks may appear and will not be considered defective.
- Prism Paints may vary slightly from one batch to another, but will remain within a controlled color range. To avoid color variations, order all components for a project at one time.
- All Prism Paints will receive a 10° topcoat, 30° topcoat is not available.
- Because Prism Paints contain a high percentage of solids, certain characteristics such as joint fracturing will occur. Hairline cracks typically develop along joints on the face, back and edge profiles and can occur during normal handling or from the expansion and contraction of wood. Paint fracturing at joints is not considered to be a defect.
- As with most finishes, Prism Paint colors will change over time due to exposure to light, pollution and household chemicals. Additions or replacements to existing kitchens may not initially match finished products already in place.
- Because the individual staves of the panel continue to contract and expand, lines may appear on solid wood panels and offsets may develop from one stave to another. These stave lines will not be considered defective.
Note: To eliminate stave offsets, utilize the MDF center panel option.
- Veneer checking and seam separation are inherent characteristics of plywood panels that may appear to be cracks within the coating. These cracks are caused by changes within the veneer and will not be considered defective.
Note: To eliminate veneer checking, utilize the MDF center panel option.
- Customers interested in purchasing Prism Paint finishing materials through the DuraGuard Program should reference DuraGuard Systems information found in this section for coatings pricing and selection. It is strongly recommended that the DuraGuard paint be ordered at the same time as the finished parts to ensure an accurate color match.
- When purchasing multiple containers of loose Prism Paint coating material, mix the contents of like finishes together prior to adding catalyst to achieve a consistent overall color.
- Catalyst must be added to all Prism Paints prior to application. The catalyzation process results in both a limited pot life and a recoat window. Mixture and application instructions are provided near the end of this section.
- We recommend that any topcoat other than DuraGuard products be tested for compatibility prior to application. Conestoga will not warrant products that fail due to non-compatible topcoat materials.
- Conestoga assumes no responsibility for incorrect application of Prism Paint materials by customers, which may result in poor adhesion, color mismatch or other finish related failures.

Colourtones and Prism Paints with Hand Wiped Glazes

- Hand wiped glazed treatments offer a distinctive appearance, significantly altering the base Colourtone/Prism Paint colors. The random nature of the hand wiped glazing option ensures slight variations from one product to the next, giving a unique look to the finished kitchen.
- Each hand wiped glaze possesses specific characteristics that determine the appearance of the glaze on finished doors, drawer fronts and mouldings. Coffee and Pewter glazes are heavily pigmented glazes, creating a significant color change to the base Colourtone/Prism Paint. Profiled areas where these glazes are applied develop heavy lines that outline the profile. Chai and Oyster glazes are lighter in color and produce a more subtle color change to the base Colourtone/Prism Paint. They also produce much less of the highlighting effect in profiled areas.
- Since Cabinet Systems parts typically do not have profiled areas where glaze would hang, Cabinet Systems parts are not eligible to have a separate glaze applied.

Colourtones and Prism Paints with Hand Wiped Glazes (continued)

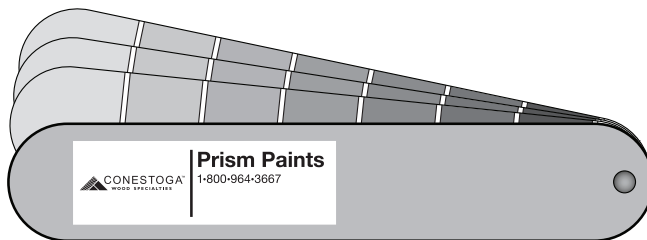
- Colourtones/Prism Paint parts receiving the hand wiped glazed option will have slight inconsistencies in appearance. Variations, however slight, are inherent to these finish combinations. To successfully market this product, education of your production personnel, installers, sales staff, designers and clients must take place.
- Characteristics of products finished with Colourtone/Prism Paints and hand wiped glazed finishes include variations in:
 - ♦ Glaze “hang” with noticeable variations on edge profiles, panel raises and applied mouldings.
 - ♦ Absorption into end grain on framing and panel raises.
 - ♦ Highlighting of machined areas which normally do not appear with typical wiping stains or base Colourtone/Prism Paint colors.
 - ♦ Appearance of blotchiness and rag marks.
- Components finished with Colourtones/Prism Paints and hand wiped glazes will remain within a controlled range of color; however, individual pieces will vary slightly.
- As with any Colourtone/Prism Paint product, we do not recommend ordering plywood panel doors or other veneered panel products due to the inherent cracking and checking that takes place with veneers. Veneer checking will not be considered a finishing defect.
Note: To eliminate veneer checking and cracking, utilize the MDF center panel option.
- Use of hand wiped glazes on mitered and applied moulding products will greatly enhance any offset that may be present in the joint construction.
- The machining of end grain on certain profiles may result in those surfaces being porous and the finish on these surfaces may not be as full as the finish on non-end grain areas. This matching will also cause the glaze to be heavier on these areas than non-end grain surfaces and are not considered to be defective.
- MDF doors finished with Colourtones/Prism Paints and hand wiped glazes will have noticeable variations in glaze hang and absorption on profiled areas. Machined areas may contain small pinholes that are highlighted by the glaze and will not be considered defects.

Customer Responsibilities

- All sample doors and swatches should be properly labeled with specie, finish color, date and sales order number.
- Sample doors and swatches should be stored in such a manner that they are not exposed to light or extreme heat for an extended period of time. Exposure to sunlight, indoor lighting or extreme heat will cause samples to discolor and they will no longer be an accurate representation of color. Sample swatches should be discarded and replaced when their expiration date is reached.
- **Sample doors and swatches should be replaced every 12 months or when they become discolored.** Cherry will need to be replaced more frequently than other species. Conestoga cannot guarantee that a current order will match a sample more than 12 months old. Jobs sold from a sample swatch older than one year will not be warranted for color match.
- We strongly recommend that a full kitchen **not be sold from a color swatch or fan deck.** Order a sample door to show a greater array of possible character effects on a particular color, design and specie combination.
- For displays that are older than one year or that may be discolored, we recommend that customers obtain a current sample door in that specie, finish and glaze combination. Remember, display kitchens do change color due to their exposure to natural light, indoor lighting, heat and other conditions. The change that takes place is very gradual and may be difficult to detect, especially if viewed daily.
- If a job is ordered based on the color of a sample door or display, make sure the sample is less than one year old and the color is accurate. Customers requesting replacements because the job does not match their sample will be asked to provide the original sample sales order number so the age of the sample may be determined. **Conestoga will not warrant products for color mismatch if the sample is more than 12 months old or is discolored due to excessive exposure.**

Prism Paint Fan Deck

- 1,400 eligible colors are showcased in this comprehensive fan deck.
- Divided into five sections: Colors, Neutrals, Whites & Pastel, Timeless and Historic. Please note that approximately 200 of the more vibrant colors have been excluded from the Conestoga Prism Paints offering.
- All paints are interior grade only, including the Historic Exterior Section.
- Each paint color is classified as either a Pastel or Deeptone. This classification determines the material cost category when finishing is requested, or DuraGuard loose paints are selected.
- Refer to Conestoga's Customer Business Portal for a complete listing of eligible paint colors and price categories.
- Prism Paints are available with Chai, Coffee, Oyster and Pewter glaze options.
- Order Prism Paint fan decks using part #2602036A.
- \$20.00 net per fan deck.

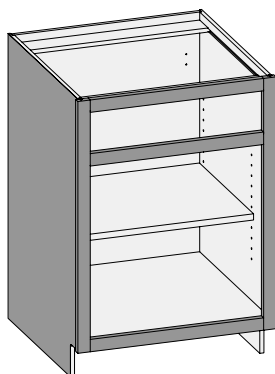


Advantage Finishing Options

Advantage Framed Cabinet Systems offers three finishing configurations for our cabinet parts - Exterior, Interior and Back - to give customers greater design flexibility. See diagrams below for listing of which pieces get finished with each configuration.

When completing the order forms, the finish specified on Advantage Cabinet Systems Order Form #7 will be considered the standard and applied to all three options when matching interior is ordered. To order a different finish for the Interior or Back of a cabinet with Matching Interior, note the area with the finish on Advantage Cabinet Systems Order Form #7-A in the Special Instructions area per cabinet. Order Forms are available on the Customer Business Portal and the Custom Product Manual.

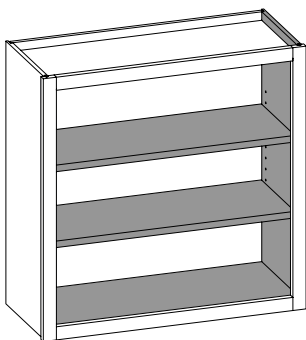
Exterior Finishing



Includes:

- Front Frame – face, interior and exterior edges, finish only on exposed edge on back of front frame.
- Exposed/flush sides – face only.

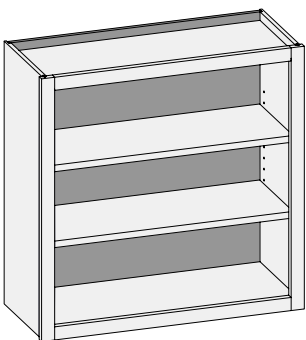
Interior Finishing (Only available with matching interiors)



Includes:

- Sides – 1 interior face.
- Top and Bottom – 1 interior face.
- Fixed Intermediate Floor – 2 faces.
- Shelves – 2 faces, edgebanded edges.
- Any other matching interior components.

Back Finishing (Only available with matching interiors)



Includes:

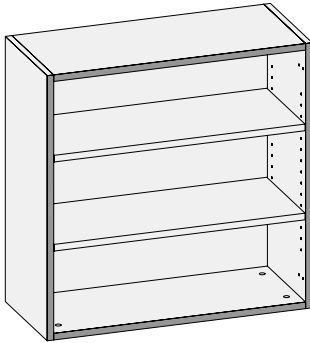
- Backs – 1 interior face.

Vesta Finishing Options

Vesta Full Access Cabinet Systems offers three finishing configurations for our cabinet parts - Exposed Ends, entire Case and Edgeband only to give customers greater design flexibility. See diagrams below for listing of the areas finished with the selected configuration.

When completing the order forms, the finish specified on Vesta Cabinet Systems Order Form #8 will be considered the standard when Exposed Ends, Door Matching Edgeband or Matching Case Color is selected. Order Forms are available on the Customer Business Portal and the Custom Product Manual.

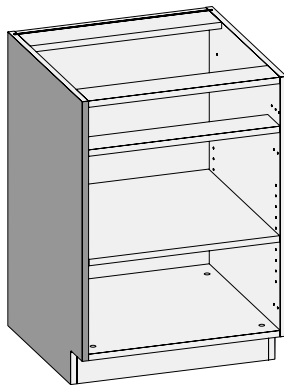
Matching Finished Edgeband



Includes:

- Edgeband on front edge of sides, tops, bottoms, mid-floors, stringers and all forward facing components.
- Available in published plywood materials.

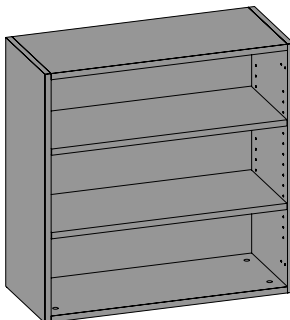
Finished Exposed End



Includes:

- Sides only.
- Available in Cherry, Hard Maple, Paint Grade and Red Oak with prefinished White Birch interior.
- Not available in Walnut and Rift Cut with White Birch interior. Must order as Matching Case Color.
- If PVC edgeband is selected, Finished Exposed Ends will be produced with matching finished edgeband.

Entire Case Finishing



Includes:

- When Matching Case Color is selected in a plywood material, all cabinet parts are finished except for hanger cleats and toe backers.
- When Screw and Dowel construction method is selected, Exposed Ends must be identified to ensure pilot holes are removed from sides.

Offering and Availability

Colourtones on Cabinet Systems										
	Antique White	Arctic White	Cadet Grey	Crystal White	Designer White	Ebony*	Fern	Frosty White	Gunsmoke	Hearthstone Grey
Cherry										
No Glaze	NR	NR	R	NR	NR	R	R	NR	R	R
Chai	X	X	X	NR†	X	X	X	NR†	X	X
Coffee	X	X	X	NR†	X	X	X	NR†	X	X
Oyster	X	X	X	NR†	X	X	X	NR†	X	X
Pewter	X	X	X	NR†	NR†	X	X	NR†	X	X
Maple, Hard										
No Glaze	R	R	R	R	R	R	R	R	R	R
Chai	X	X	X	R†	X	X	X	R†	X	X
Coffee	X	X	X	R†	X	X	X	R†	X	X
Oyster	X	X	X	R†	X	X	X	R†	X	X
Pewter	X	X	X	R†	R†	X	X	R†	X	X
Maple, Soft (cabinet parts only)										
No Glaze	R	R	R	R	R	R	R	R	R	R
Chai	X	X	X	R†	X	X	X	R†	X	X
Coffee	X	X	X	R†	X	X	X	R†	X	X
Oyster	X	X	X	R†	X	X	X	R†	X	X
Pewter	X	X	X	R†	R†	X	X	R†	X	X
Paint Grade Hard Maple (doors only)										
No Glaze	R	R	R	R	R	R	R	R	R	R
Chai	X	X	X	R†	X	X	X	R†	X	X
Coffee	X	X	X	R†	X	X	X	R†	X	X
Oyster	X	X	X	R†	X	X	X	R†	X	X
Pewter	X	X	X	R†	R†	X	X	R†	X	X
Oak, Red										
No Glaze	R	R	R	R	R	R	R	R	R	R
Chai	X	X	X	X	X	X	X	X	X	X
Coffee	X	X	X	X	X	X	X	X	X	X
Oyster	X	X	X	X	X	X	X	X	X	X
Pewter	X	X	X	X	X	X	X	X	X	X

* **Ebony Colourtones** will magnify any small imperfection. Small imperfections such as dust or lint will not be considered defects.

† **Doors, drawer fronts, mouldings and other Custom products** will be finished with Colourtone and hand wiped glaze. Cabinet Systems case parts are not eligible to be finished with Colourtones/Prism Paints with glazes. Inset front frames are eligible to receive glazes.

Using Offering and Availability Charts

Offering and Availability Charts should be referenced prior to placing an order.

- Locate the desired finish in the top row, then follow the row down to the desired specie/glaze combination found along the left column of the chart.
- The box where the finish, specie and glaze combination intersects will contain one of the following references:

R = Recommended: These finish combinations refer only to the consistency of the finish application and not the aesthetic beauty of the combination.

NR = Not Recommended: These finish combinations are problematic and do not meet Conestoga's standards for color consistency. They also highlight various other characteristics such as machine marks and open end grain that will not be considered defective. NR combinations will receive a 20% upcharge to the Design Charge compensating for additional labor required for difficult combinations. Even if a sample door is purchased, we cannot guarantee that the next order will be an exact match to the sample door. Conestoga will not guarantee color consistency on NR combinations.

X = Not Available: Such combinations present application challenges which result in finish appearances Conestoga cannot consistently reproduce, and are not available.

Offering and Availability

Colourtones				
	Heron	Marina	Metropolitan Grey	Regent Blue
Cherry				
No Glaze	R	NR	R	NR
Chai	X	X	X	X
Coffee	X	X	X	X
Oyster	X	X	X	X
Pewter	X	X	X	X
Maple, Hard				
No Glaze	R	R	R	R
Chai	X	X	X	X
Coffee	X	X	X	X
Oyster	X	X	X	X
Pewter	X	X	X	X
Maple, Soft (cabinet parts only)				
No Glaze	R	R	R	R
Chai	X	X	X	X
Coffee	X	X	X	X
Oyster	X	X	X	X
Pewter	X	X	X	X
Paint Grade Hard Maple (doors only)				
No Glaze	R	R	R	R
Chai	X	X	X	X
Coffee	X	X	X	X
Oyster	X	X	X	X
Pewter	X	X	X	X
Oak, Red				
No Glaze	R	R	R	R
Chai	X	X	X	X
Coffee	X	X	X	X
Oyster	X	X	X	X
Pewter	X	X	X	X

Standard Primer Only				
	White	Light Grey	Medium Grey	Dark Grey
Cherry	R	R	R	R
Maple, Hard	R	R	R	R
Maple, Soft	R	R	R	R
Paint Grade Hard Maple	R	R	R	R
Oak, Red	R	R	R	R

R = Recommended: These finish combinations refer only to the consistency of the finish application and not the aesthetic beauty of the combination.

NR = Not Recommended: These finish combinations are problematic and do not meet Conestoga's standards for color consistency. They also highlight various other characteristics such as machine marks and open end grain that will not be considered defective. NR combinations will receive a 20% upcharge to the Design Charge compensating for additional labor required for difficult combinations. Even if a sample door is purchased, we cannot guarantee that the next order will be an exact match to the sample door. Conestoga will not guarantee color consistency on NR combinations.

X = Not Available: Such combinations present application challenges which result in finish appearances Conestoga cannot consistently reproduce, and are not available.

Offering and Availability

	Wiping Stains								
	Alpine	Autumn	Bordeaux	Chestnut	Colonial	Cordovan	Dark Roast	Driftwood	Espresso
Cherry									
No Glaze	X	R	R	R	R	R	R	R	R
Brown	X	R	X	R	R	R	R	R	X
Caramel	X	R	X	R	R	R	R	R	X
Pewter	X	R	X	R	R	R	NR	R	X
Sable & Onyx	X	R	R	R	R	R	R	R	R
White	X	NR	X	X	X	X	X	R	X
Maple, Hard									
No Glaze	R	R	NR	NR	NR	NR	NR	R	NR
Brown	X	R	X	NR	NR	NR	NR	R	X
Caramel	X	R	X	NR	NR	NR	NR	R	X
Pewter	NR	R	X	NR	NR	NR	NR	R	X
Sable & Onyx	X	NR	NR	NR	NR	NR	NR	R	NR
White	R	R	X	X	X	X	X	R	X
Maple, Soft									
No Glaze	R	R	NR	NR	NR	NR	NR	R	NR
Brown	X	R	X	NR	NR	NR	NR	R	X
Caramel	X	R	X	NR	NR	NR	NR	R	X
Pewter	X	R	X	NR	NR	NR	NR	R	X
Sable & Onyx	X	NR	NR	NR	NR	NR	NR	R	NR
White	R	R	X	X	X	X	X	R	X
Oak, Red									
No Glaze	R	R	R	R	R	R	R	R	R
Brown	X	R	X	R	R	R	R	R	X
Caramel	X	R	X	R	R	R	R	R	X
Pewter	NR	R	X	R	R	R	NR	R	X
Sable & Onyx	X	R	R	R	R	R	R	R	R
White	R	R	X	X	X	X	X	R	X

R = Recommended: These finish combinations refer only to the consistency of the finish application and not the aesthetic beauty of the combination.

NR = Not Recommended: These finish combinations are problematic and do not meet Conestoga's standards for color consistency. They also highlight various other characteristics such as machine marks and open end grain that will not be considered defective. NR combinations will receive a 20% upcharge to the Design Charge compensating for additional labor required for difficult combinations. Even if a sample door is purchased, we cannot guarantee that the next order will be an exact match to the sample door. Conestoga will not guarantee color consistency on NR combinations.

X = Not Available: Such combinations present application challenges which result in finish appearances Conestoga cannot consistently reproduce, and are not available.

Offering and Availability

Wiping Stains										
	Ginger	Harvest Gold	Honey	Natural	Nickel	Nitefall	Nutmeg	Portabella	Saddle	Washington Cherry
Cherry										
No Glaze	R	R	R	R	R	R	R	R	R	R
Brown	R	R	R	R	R	X	R	R	R	R
Caramel	R	R	R	R	R	X	R	R	R	R
Pewter	R	R	R	R	R	X	NR	R	R	R
Sable & Onyx	R	R	R	R	X	R	X	R	R	R
White	NR	NR	X	NR	R	X	X	R	X	X
Maple, Hard										
No Glaze	R	R	NR	R	R	NR	R	NR	NR	NR
Brown	R	R	NR	R	R	X	R	NR	NR	NR
Caramel	R	R	NR	R	R	X	R	NR	NR	NR
Pewter	R	R	NR	R	R	X	NR	NR	NR	NR
Sable & Onyx	R	R	NR	X	X	NR	X	NR	NR	NR
White	R	R	X	R	R	X	R	R	X	X
Maple, Soft										
No Glaze	R	R	NR	R	R	NR	R	NR	NR	NR
Brown	R	R	NR	R	R	X	R	NR	NR	NR
Caramel	R	R	NR	R	R	X	R	NR	NR	NR
Pewter	R	R	NR	R	R	X	NR	NR	NR	NR
Sable & Onyx	R	R	NR	X	X	NR	X	NR	NR	NR
White	R	R	X	R	R	X	R	R	X	X
Oak, Red										
No Glaze	R	R	R	R	R	R	R	R	R	R
Brown	R	R	R	R	R	X	R	R	R	R
Caramel	R	R	R	R	R	X	R	R	R	R
Pewter	R	R	R	NR	R	X	NR	R	R	R
Sable & Onyx	R	R	R	R	X	R	X	R	R	R
White	R	R	X	R	R	X	R	R	X	X

Truetones					
	Ashen	Cocoa	Desert Sand	Seaside	Shale
Cherry					
No Glaze	R	R	R	R	R
Brown	R	R	R	R	R
Onyx	R	R	R	R	R
Oyster	R	R	R	R	R
Sable	R	R	R	R	R
Maple, Hard					
No Glaze	R	R	R	R	R
Brown	R	R	R	R	R
Onyx	R	R	R	R	R
Oyster	R	R	R	R	R
Sable	R	R	R	R	R

R = Recommended: These finish combinations refer only to the consistency of the finish application and not the aesthetic beauty of the combination.

NR = Not Recommended: These finish combinations are problematic and do not meet Conestoga's standards for color consistency. They also highlight various other characteristics such as machine marks and open end grain that will not be considered defective. NR combinations will receive a 20% upcharge to the Design Charge compensating for additional labor required for difficult combinations. Even if a sample door is purchased, we cannot guarantee that the next order will be an exact match to the sample door. Conestoga will not guarantee color consistency on NR combinations.

X = Not Available: Such combinations present application challenges which result in finish appearances Conestoga cannot consistently reproduce, and are not available.

Cabinet Systems Finishing Pricing

Design and Material Charges for Cabinet Systems Finishing		
Finish Category	Design Charge	Material Charge per sq. ft.
Natural Finish	\$7.50	\$5.25
Wiping stain, Low Complexity	9.65	5.95
Wiping stain, High Complexity	10.75	8.35
Truetones, Low Complexity	10.75	5.95
Truetones, High Complexity	16.10	13.75
Colourtones (on wood)	13.70	9.75
Colourtones (on hybrid** & MDF) - doors only	15.00	9.75
Primer - standard white (on wood)	12.35	7.75
Primer – standard white (on hybrid** & MDF) - doors only	13.70	7.75
Primer – standard light, medium & dark grey (on wood)	12.60	8.75
Primer – standard light, medium & dark grey (on hybrid** & MDF) - doors only	14.00	8.75
Prism Paints - pastels (on wood)	14.80	21.70*
Prism Paints - deeptones (on wood)	14.80	24.50*
Prism Paints - pastels (on hybrid** & MDF) - doors only	16.40	21.70*
Prism Paints - deeptones (on hybrid**, MDF) - doors only	16.40	24.50*
Finish Options		
Hand wiped glazes (Doors only)	\$7.50	\$3.55
Custom Wiping Stain Match (Initial match charge is \$250.00 net)		
Custom Wiping Stain	Low Complexity	\$12.10
	High Complexity	12.10
Finish Complexity/Color Selection		
Natural Finish	Clear sealer and topcoat	
Wiping Stains	Low Complexity	Autumn, Colonial, Ginger, Harvest Gold, Honey, Nutmeg, Portabella, Saddle, Washington Cherry
	High Complexity	Alpine, Bordeaux, Chestnut, Cordovan, Dark Roast, Driftwood, Espresso, Nickel, Nitefall
Truetones	Low Complexity	Desert Sand
	High Complexity	Ashen, Cocoa, Seaside, Shale
Colourtones	Antique White, Arctic White, Cadet Grey, Crystal White, Designer White, Ebony, Fern, Frosty White, Gunsmoke, Hearthstone Grey, Heron, Marina, Metropolitan Grey, Regent Blue	
Glazes (Stains)	Brown, Caramel, Onyx, Pewter, Sable, White	
Glazes (Colourtones)	Chai, Coffee, Oyster, Pewter	

* There will be a \$42.00 net surcharge for Pastel finishes and a \$50.00 net surcharge for Deeptone and energetic bright finishes on orders under 10 square feet.

**Hybrid door features MDF panel and solid wood framing.

Cabinet Systems Finishing Pricing

Ancillary Products Finishing Pricing			
Product		Design Charge multiplier	Material Charge
Front Frames	1 opening	1x	$\frac{\text{Front Frame Perimeter} \times 4}{144}$ actual square footage (3 sq. ft. min.)
	2-3 openings	1.5x	
	4-5 openings	2x	
	6-7 openings	2.5x	
	8+ openings	3x	
Plywood/Solid Wood Parts (sides, backs, shelves, tops, bottoms and toe boards)		1x	actual sq. footage ÷ 2
8 foot linear mouldings (face only)		1x	2 sq. ft.
8 foot linear mouldings (face and back)		2x	5 sq. ft.
Assembled mouldings		2x	5 sq. ft.
Valances, fillers, fluted fillers (finished on face and sides only)		1x	actual sq. footage
Plywood panels 1/8", 1/4", 3/4" (face only)**		1x	actual sq. footage ÷ 2

** 1/8" plywood panels only available finished on face only.

Range Hoods (See Custom Product Manual Section 11 for images and details)		
Batten Select, Select	3x	12 sq. ft.
Estate Canopy	6x	15 sq. ft.
Artisan, B, BX, CHW, E, E3, ER300, FX, FXBPUP, FX2HW, FX2PL, G, K300, P, T, VCHIM-SV, Z200 (45" or less in width)	6x	25 sq. ft.
Artisan, B, BX, CHW, E, E3, ER300, FX, FXBPUP, FX2HW, FX2PL, G, K300, P, T, VCHIM-SV, Z200 (45-1/16"+ in width)	8x	25 sq. ft.
AX3, BXB, CHWB, Farmhouse w/Chimney, GRA, I, Modern Tapered w/Chimney, TRA, VCHIM-AV, VCHIM-VRS, Waterfall (all sizes)	8x	25 sq. ft.
H2, M, S, SB100 (45" or less in width)	8x	25 sq. ft.
H2, M, S, SB100 (45-1/16" + in width)	11x	50 sq. ft.
SRA (all sizes)	11x	50 sq. ft.

Custom/Cabinet Systems Finish Offering

Finish and Specie Availability			
Finish Availability	Custom Front Frames	Cabinet Systems	End skins/Veneers
Stain/Stain & glaze/Truetones	yes	yes	yes
Colourtone finish w/no glaze	yes	yes	yes
Colourtone w/glaze	yes	no	yes
Primer only	yes	yes	yes
Wear sanding/Antiquing	no	no	no
Distressing level 1, 2 & 3	yes	yes	no
Specie Availability w/Colourtones	Custom Front Frames	Cabinet Systems	End skins/Veneers
Cherry	yes	yes	yes
Maple, Hard	yes	yes	yes
Maple, Soft	no*	yes	no
Oak, Red (w/Colourtones)	yes	yes	yes
Oak, Red (w/Colourtones & glazes)	yes	no	yes
Specie Availability w/Prism Paints	Custom Front Frames	Cabinet Systems	End skins/Veneers
Cherry, Maple, Hard, Maple, Soft, Oak, Red	yes	yes	yes

*Soft Maple front frames are not available in Colourtone or Prism Paint finishes on Cabinet Systems orders when the pre-fit or beaded option is selected.

Finish Sample Kits

Cherry	Hickory/Walnut	Maple, Hard	Oak	Colourtones
Stain/Glaze	Stain/Glaze	Stain/Glaze	Stain/Glaze	Colourtone/Glaze
Autumn Bordeaux Chestnut Colonial Cordovan Dark Roast Driftwood Driftwood/Brown Driftwood/Caramel Driftwood/Onyx Driftwood/Pewter Driftwood/Sable Driftwood/White Espresso Ginger Harvest Gold Honey Natural Nickel Nitefall Nutmeg Portabella Saddle Washington Cherry	Hickory Autumn Chestnut Dark Roast Driftwood Natural Portabella Portabella/Brown Portabella/Caramel Portabella/Onyx Portabella/Pewter Portabella/Sable Portabella/White Saddle Walnut Autumn Colonial Driftwood Espresso Ginger Harvest Gold Natural Nickel Nitefall Nutmeg Portabella Saddle	Alpine Autumn Autumn/Brown Autumn/Caramel Autumn/Onyx Autumn/Pewter Autumn/Sable Autumn/White Bordeaux Chestnut Colonial Cordovan Dark Roast Driftwood Espresso Ginger Harvest Gold Honey Natural Nickel Nitefall Nutmeg Portabella Saddle Washington Cherry	Oak, Red Autumn Chestnut Dark Roast Harvest Gold Honey Natural Nutmeg Saddle Oak, White Alpine Autumn Colonial Driftwood Espresso Ginger Natural Natural/Brown Natural/Caramel Natural/Onyx Natural/Pewter Natural/Sable Natural/White Nickel Nitefall Nutmeg Portabella	Cherry Crystal White/Antiqued Ebony/Antiqued Maple, Hard, Paint Grade Antique White Arctic White Cadet Grey Crystal White Designer White Ebony/Antiqued Fern Frosty White Frosty White/Chai Frosty White/Coffee Frosty White/Oyster Frosty White/Pewter Gunsmoke Hearthstone Grey Heron Marina Metropolitan Grey Regent Blue

Truetones

Stain/Glaze

Cherry

Ashen
Cocoa
Desert Sand
Seaside
Shale

Maple, Hard

Ashen
Ashen/Brown
Ashen/Onyx
Ashen/Oyster
Ashen/Sable
Cocoa
Desert Sand
Seaside
Shale

Oak, White

Ashen
Cocoa
Desert Sand
Seaside
Shale

Walnut

Ashen
Cocoa
Seaside
Shale

Pricing per kit: Wiping stains (Cherry, Hard Maple, Hickory/Walnut and Oak) and Truetone kit: \$55.00 net. Colourtone kit: \$65.00 net.

Specifications: Swatch size: 4-1/4" x 6-1/8". Swatch has G-084 groove on face – except for finishes with Chai and Oyster glazes. Each swatch is individually labeled.

Kits are packed in a labeled file box, reducing the need to remove individual swatches for identification; this limits the exposure to light that accelerates color change.

Larger Swatch Size

Individual Recommended and Not Recommended finishes are available on 6-1/8" x 14" chips.

Wiping stains and Truetones - \$18.00 net.

Colourtones - \$20.00 net.

Prism Paints Pastels - \$65.00 net.

Prism Paints Deeptones - \$73.00 net.

Conestoga DuraGuard System Overview

DuraGuard is a complete finishing material program designed to make it easy to match Conestoga's prefinished products, in which all the wiping stains, Truetones, Colourtones, Prism Paints, glazes, primers, sealers and topcoats work together to create a lasting finish on our customer's components.

- DuraGuard provides finishing materials, step-by-step instructions, access to our in-house finishing professionals and support products such as touch up kits.

DuraGuard System Features

- Access to all of Conestoga's topcoats, sealers, stains, paints, primers, glazes and other finishing related materials.
- Every shipment of finishing material includes a label with QR codes to provide step-by-step instructions detailing how to mix raw materials, sand the wood, apply the finish, and spray the topcoat.
- Access to our Finishing Department at (717) 445-3252 every business day, from 7:00 a.m. to 3:30 p.m. (EST). Our professionals are dedicated to answering any finishing questions our customers may have.
- Inexpensive touch up kits are available; these kits are used to hide scratches or blemishes incurred in our customers' shop. Touch up kits make a great gift for your satisfied customers. See DuraGuard Packaged Finish Pricing Chart in this section for details and pricing.

DuraGuard System Disclaimers

- Conestoga's finishes are industrial in nature, unlike finishes purchased at a retail store. Although they are of higher quality than most finishes, Conestoga's coatings are also more combustible, more volatile and require a greater level of expertise to apply.
- Due to the complexities involved with any finishing process, Conestoga will not be liable for any damages or injuries resulting from the use of this product, even if every precaution is taken by the customer. Conestoga's liability is limited to the original purchase price of the finishing material.
- In order to best match any DuraGuard finish color, it is important to follow the processes outlined in our instruction documents. These instructions are found in this section of the manual or by scanning the QR code on the DuraGuard label. If the proper steps are not followed, the finished product may not match the finished doors that were purchased from Conestoga. However, please bear in mind that following these procedures will not always guarantee an exact match.
- Due to the many variables involved in any finishing process, Conestoga assumes no responsibility if products finished by the customer using the DuraGuard System do not produce an exact match to prefinished products purchased from Conestoga.
- The DuraGuard Finishing System is scientifically designed so that each of the materials, from base coat to topcoat, work with one another, thereby providing a beautiful protective finish for our customer's products. Finishing products not sold by Conestoga may react unfavorably to the DuraGuard finishing materials causing poor topcoat adhesion, discoloration or other problems.

DuraGuard Packaged Finishes Pricing				
Wiping Stains	Quarts	Gallons	5-Gallons	
Alpine	\$51.00	\$137.00	\$548.00	
Autumn	44.00	109.00	418.00	
Bordaeux	60.00	168.00	723.00	
Chestnut	52.00	147.00	572.00	
Colonial	43.00	104.00	394.00	
Cordovan	65.00	195.00	859.00	
Dark Roast	44.00	109.00	418.00	
Driftwood	42.00	100.00	378.00	
Espresso	51.00	137.00	548.00	
Ginger	45.00	115.00	439.00	
Harvest Gold	42.00	100.00	378.00	
Honey	44.00	109.00	418.00	
Nickel	43.00	104.00	394.00	
Nitefall	42.00	100.00	378.00	
Nutmeg	44.00	109.00	418.00	
Portabella	40.00	91.00	331.00	
Saddle	42.00	100.00	378.00	
Washington Cherry	45.00	113.00	439.00	
Truetone Stain				
Desert Sand	\$52.00	\$120.00	\$538.00	
Truetone Spray Stains (use w/ Truetone wiping stains)				
Ashen	NA	\$82.00	\$267.00	
Cocoa	NA	86.00	294.00	
Seaside	NA	99.00	315.00	
Shale	NA	82.00	267.00	
Truetone Wiping Stains (use w/ Truetone spray stains)				
Ashen	\$42.00	\$86.00	\$252.00	
Cocoa	54.00	142.00	391.00	
Seaside	44.00	105.00	284.00	
Shale	42.00	86.00	252.00	
Glazes				
Brown	\$52.00	\$121.00	\$457.00	
Caramel	52.00	121.00	457.00	
Chai	52.00	116.00	426.00	
Coffee	52.00	116.00	426.00	
Onyx	52.00	116.00	426.00	
Oyster	52.00	121.00	457.00	
Pewter	52.00	121.00	457.00	
Sable	52.00	121.00	457.00	
White	52.00	121.00	457.00	
Primers (Catalyst V66V21 required)				
	Quarts	Gallons	5-Gallons	
White	NA	\$122.00	\$468.00	
Black	NA	137.00	525.00	
Light Grey	NA	131.00	490.00	
Medium Grey	NA	134.00	506.00	
Dark Grey	NA	137.00	525.00	
Colourtones (Catalyst V66V21 required)				
Antique White	NA	\$124.00	\$483.00	
Arctic White	NA	135.00	531.00	
Cadet Grey	NA	140.00	562.00	
Crystal White	NA	111.00	405.00	
Designer White	NA	124.00	478.00	
Ebony	NA	128.00	499.00	
Fern	NA	140.00	562.00	
Frosty White	NA	111.00	405.00	
Gunsmoke	NA	129.00	510.00	
Hearthstone Grey	NA	128.00	499.00	
Heron	NA	138.00	552.00	
Marina	NA	144.00	588.00	
Metropolitan Grey	NA	140.00	562.00	
Regent Blue	NA	137.00	546.00	
Prism Paints (Catalyst V66V21 required)				
Pastels	NA	\$200.00	\$933.00	
Deeptones	NA	237.00	1,103.00	
Sealer & Topcoats (Catalyst V66V21 required)				
Sealer	NA	\$94.00	\$315.00	
5° Topcoat	NA	110.00	405.00	
10° Topcoat	NA	110.00	405.00	
30° Topcoat	NA	110.00	405.00	
General Catalyst (use with primers, Colourtones, Prism Paint, Sealer & Topcoats)				
Catalyst V66V21	\$53.00	\$122.00	NA	
Touch Up Kits*				
Wiping Stains, Truetones & Glaze Kits (net)			\$17.00 ea	
Colourtones, Prism Paints & Custom Stain Kits (net)			17.00 ea	
Colourtone Aerosol Can (net)			27.50 ea	
Clear Coat Aerosol Can - Low Sheen (net)			27.50 ea	

Custom stain match materials and Prism Paints are mixed on a per-order basis and cannot be expedited.

3.20

DuraGuard Finishing Instructions

All Wiping Stains (except Bordeaux, Dark Roast, Espresso, Nickel and Nitefall)

- Use this process to match all Conestoga wiping stains except Bordeaux, Dark Roast, Espresso Nickel and Nitefall stains.
 - White wood sand with an oscillating palm sander using 180 grit sandpaper.
 - Apply wiping stain over wood. Wipe all surfaces clean with lint-free rag.
 - Allow wiping stain to dry for a minimum of 1 hour.
 - Spray sealer to approximately 4 wet mil thickness.
 - When the sealer is completely dry, sand sealer with fine grit (220-280) sandpaper using an oscillating palm sander on all flat surfaces. Hand sand all profiles with 220 grit sandpaper.
 - Spray on topcoat to approximately 4 wet mil thickness.
 - Allow topcoat to dry for a minimum of 4 hours before handling.
-

Bordeaux, Dark Roast, Espresso, Nickel and Nitefall Wiping Stains

- Use this process to match Conestoga's Bordeaux, Dark Roast, Espresso, Nickel and Nitefall wiping stains.
 - White wood sand with an oscillating palm sander using 180 grit sandpaper.
 - Moisten wood surface by lightly misting with water. Do not over saturate. Allow wood to completely dry for 30 to 60 minutes depending on relative humidity. This will open the grain allowing penetration of stain.
 - Apply wiping stain over wood. Wipe all surfaces clean with a lint-free rag.
 - Allow wiping stain to dry for a minimum of 1 hour.
 - Spray sealer to approximately 4 wet mil thickness.
 - When sealer is completely dry, sand sealer with fine grit (220-280) sandpaper using an oscillating palm sander on all flat surfaces. Hand sand all profiles with 220 grit sandpaper.
 - Spray on topcoat to approximately 4 wet mil thickness.
 - Allow topcoat to dry for a minimum of 4 hours before handling.
-

Hand Wiped Glazes Over Wiping Stains

- Use this process to apply hand wiped glazes over all Conestoga wiping stains.
- White wood sand with an oscillating palm sander using 180 grit sandpaper.
- Apply wiping stain over wood per DuraGuard finishing instructions. Wipe all surfaces clean with lint-free rag.
- Allow wiping stain to dry for a minimum of 1 hour.
- Spray sealer to approximately 4 wet mil thickness.
- When sealer is completely dry, hand sand all surfaces using 320 grit sandpaper. Make sure to sand in same direction as the wood grain.
- Apply the glaze to the entire surface and wipe the excess glaze off with a lint-free rag, leaving the desired amount of glaze in profiled areas. When matching existing products, make sure the same amount of glaze is left on the surface of the product being glazed as is on the product to be matched. Allow glaze to dry for 1 hour.
- Spray on topcoat to approximately 4 wet mil thickness.
- Allow topcoat to dry for a minimum of 4 hours before handling.

DuraGuard Finishing Instructions (continued)

Mixing Topcoats and Sealers

Follow this process when using DuraGuard topcoats and sealers to match products finished by Conestoga.

- Always use a lined can or plastic container when adding catalyst. Do not catalyze in an unlined metal can.
- Slowly pour the pre-measured container of catalyst into the gallon container of sealer or topcoat. Thoroughly agitate topcoat material, making sure there is no residue on the bottom of the can. Agitation must be continuous. **Do not over catalyze!**
- Once the catalyst has been added, the chemical interaction of the mixture results in a 24 hour “pot life”. After this 24 hour time frame, the mixture begins to cure rendering it unusable.
- Catalyst ratios are listed below.
- We strongly recommend against attempting to extend the pot life of sealer or topcoat by adding virgin material, as it will disrupt the catalyst ratio.
- Spray topcoat to a thickness of 4 wet mils.

Topcoat/Sealer	Amount of Catalyst
Conversion Varnish Products	
Sealer	4.0 ounces of catalyst V66V21 per gallon
10° (low sheen) topcoat	4.0 ounces of catalyst V66V21 per gallon
30° (medium sheen) topcoat	4.0 ounces of catalyst V66V21 per gallon

Topcoat Application Guidelines

- All standard hand wiped and Truetone stains default to 10° topcoat; 30° topcoat available upon request.
- All standard hand wiped and Truetone stains with glazes default to 10° topcoat; 30° topcoat available upon request.
- All Weathered Grain products finished with wiping stains, wiping stains with glazes, Colourtones and Colourtones with glaze default to 5° topcoat; 10° topcoat available upon request. 30° topcoat not available with Weathered Grain products.
- Antiquing, distressing and wear sanding options selected with wiping stains and wiping stains with glazes default to 10° topcoat; 30° topcoat is available upon request.
- Antiquing, distressing and wear sanding options added to Colourtone, Colourtone with glaze or Prism Paints default to 10° topcoat. 30° topcoat not available with any of these finish and option combinations.

DuraGuard Finishing Instructions (continued)

Truetones - Low Complexity

Use this process to match Conestoga's Low Complexity Truetone finishes.

- White wood sand with an oscillating palm sander using 180 grit sandpaper.
- Using spray equipment apply Truetone stain material over wood with even wet coats until the desired color is achieved. **(Diaphragm pump and HVLP gun recommended for spray application.)**
- Allow stain to dry for a minimum of 30 minutes.
- Spray sealer to approximately 4 wet mil thickness.
- When the sealer is completely dry, sand sealer with fine grit (220-280) sandpaper using an oscillating palm sander on all flat surfaces. Hand sand all profiles with 220 grit sandpaper.
- Spray on topcoat to approximately 4 wet mil thickness.
- Allow topcoat to dry for a minimum of 4 hours before handling.

Truetones - High Complexity

Use this process to match Conestoga's High Complexity Truetone finishes.

- White wood sand with an oscillating palm sander using 180 grit paper.
- Apply the Truetone wiping stain as the base color over wood. Wipe all surfaces clean with a lint-free rag.
- Allow Truetone wiping stain to dry for a minimum of 1 hour.
- Using spray equipment apply the matching Truetone spray stain material over the pre-stained wood with multiple light passes until uniform coverage is achieved. It may take as many as 4 to 6 light passes spraying in opposite directions to get uniform coverage on the board surface. **DO NOT** apply heavy wet coats as this may cause modeling and blotchiness in the spray stain. **(Diaphragm pump and HVLP gun recommended for spray application.)**
- Allow the spray stain to dry for a minimum of 30 minutes.
- Spray sealer to approximately 4 wet mil thickness.
- When the sealer is completely dry, sand sealer with fine grit (220-280) sandpaper using an oscillating palm sander on all flat surfaces. Hand sand all profiles with 220 grit paper.
- Spray topcoat to approximately 4 wet mil thickness.
- Allow topcoat to dry for a minimum of 4 hours before handling.

Hand Wiped Glazes Over Truetones

Use this process to apply hand wiped glazes over all Conestoga Truetones.

- Follow application instructions for desired Truetone finish.
- Allow Truetone to dry for a minimum of 30 minutes.
- Spray sealer to approximately 4 wet mil thickness.
- When sealer is completely dry, hand sand all surfaces using 320 grit sandpaper. Make sure to sand in same direction as the wood grain.
- Apply the hand wiped glaze to the entire surface and wipe the excess glaze off with a lint-free rag, leaving the desired amount of glaze in profiled areas. When matching existing products, make sure the same amount of glaze is left on the surface of the product being glazed as is on the product to be matched.
- Allow glaze to dry for a minimum of 1 hour.
- Spray on topcoat to approximately 4 wet mil thickness.
- Allow topcoat to dry for a minimum of 4 hours before handling.

DuraGuard Finishing Instructions (continued)

Colourtones and Prism Paints

Colourtones/Prism Paints are two-part, acid catalyzed, opaque basecoats, high in solids and similar to paint in appearance. Colourtone/Prism Paint finishing materials are non-catalyzed when purchased and must have catalyst purchased separately and added prior to application. These coatings are very durable and resistant to moisture.

Colourtones, Prism Paints and Catalyzation

Colourtone/Prism Paint finishing materials have superior film build, adhesion, excellent sanding properties and moisture resistance. It is extremely important to keep these materials thoroughly agitated while spraying. Coatings require the addition of an acid catalyst in order to cure. Since the catalyst has corrosive properties, neither the catalyst nor the catalyzed material should ever be stored in an unlined metal container. Thoroughly agitate material prior to the addition of catalyst. Add only the recommended ratio of catalyst and continue agitation for 5 minutes prior to spraying the material. **Do not over catalyze!** After catalyzation, material will have a maximum pot life of 24 hours.

Colourtone/Prism Paint materials have a limited amount of time between the application of the first and second coats and the application of topcoat. In order to achieve the proper chemical bond between coats, topcoat must be applied within 24 hours after applying the second coat. This time frame remains the same for both glazed and non-glazed products. The Colourtone/Prism Paint systems require a 10° conversion varnish topcoat. The use of any other topcoat material may result in lifting, discoloration, poor adhesion, cracking, poor moisture resistance and other finish related problems. Conestoga recommends the use of the DuraGuard glazes and topcoat in combination with Colourtone/Prism Paint finishing materials.

Surface Preparation for Colourtones and Prism Paints

- Fill all open voids with wood putty, sanding off excess putty.
- Sand surface of product with an oscillating palm sander using 180 grit sandpaper.

Spraying Colourtones and Prism Paints

- Thoroughly agitate Colourtone/Prism Paint material, add catalyst while material is under agitation. Add 4 ounces catalyst V66V21 to 1 gallon of Colourtone/Prism Paint in a lined metal can or plastic container. Pot life after catalyzation is 24 hours. Keep material under constant agitation.
- Spray Colourtone/Prism Paint material to a thickness of 4 wet mils.
- Allow first coat of material to dry for a minimum of 2 hours.
- Sand the entire surface with 280 grit sandpaper.
- Spray a second Colourtone/Prism Paint coat to a thickness of 4 wet mils.
- Allow the second coat to dry 2 hours before applying glaze or topcoat. A topcoat must be applied within 24 hours, whether product is glazed or non-glazed.
- Allow topcoat to dry for a minimum of 4 hours before handling.

Glaze over Colourtones

- Apply the glaze to all surfaces after the second coat of Colourtone is fully dry. Glaze may be applied with a rag and/or a brush.
- Wipe glaze off surfaces immediately using a “selective” wiping technique, leaving behind the desired amount of glaze in the profiled and flat areas. If matching to Conestoga prefinished products, ensure that the same amount of glaze is left in profiled areas and flat surfaces as on the Conestoga product.
- Allow glaze to dry for 1 hour.
- Spray with Conestoga’s DuraGuard 10° sheen conversion varnish topcoat to a thickness of 4 wet mils. A topcoat must be applied within 24 hours, whether product is glazed or non-glazed.
- Allow topcoat to dry for a minimum of 4 hours before handling.

DuraGuard Finishing Instructions (continued)

Topcoat over Colourtones and Prism Paints

- Thoroughly agitate topcoat material, ensuring there is no residue on bottom of can.
- Add 4 ounces of catalyst V66V21 per gallon of 10° sheen topcoat in a lined metal can or plastic container and agitate for 5 minutes prior to spraying. Keep topcoat under constant agitation. After catalyzation, the material has a 24 hour pot life. We do not recommend extending pot life by adding virgin material, as this will disrupt your catalyst ratio.
- Spray 4 wet mils of topcoat over Colourtone/Prism Paint.
- Allow topcoat to dry for a minimum of 4 hours before handling.

Antiquing on Colourtones and Prism Paints

Antiquing is a process to create the appearance that portions of the finish and even some of the substrate have been worn away from prolonged daily use.

- After allowing the Colourtone/Prism Paint material to thoroughly dry, the entire piece must be sanded with an oscillating palm sander using 280 grit sandpaper. Randomly sand through both coats of finish to expose the raw wood on profiled areas, edges and corners to simulate an aged, worn appearance. If antiquing is used in combination with the wear sanding option, follow the areas previously wear sanded. The amount and location of the antiquing should vary by personal preference, but should be focused on areas that would typically show wear from daily use. Refer frequently to the sample door finished by Conestoga.

Standard Primer Process

Conestoga's Standard primer is available in white, light grey, medium grey and dark grey and are post catalyzed, acid cured primers, compatible with many high quality topcoats. While there are many topcoats available on the market today, Conestoga recommends only acid cured, pigmented conversion varnishes.

Surface Preparation for Primer

- Fill all open voids with wood putty, sanding off excess putty.
- Sand surface of product with an oscillating palm sander using 180 grit sandpaper.

Spraying Standard Primer

- Thoroughly agitate primer materials, ensuring there is no residue on bottom of can. Add catalyst while the primer is under agitation in a lined metal can or plastic container.
- Add 3 ounces catalyst V66V21 to 1 gallon of primer. Pot life after catalyzation is 24 hours. Keep material under constant agitation.
- Spray primer to a thickness of 5 wet mils.
- Allow primer to dry for a minimum of 1 hour before sanding.
- Sealer sand the entire surface with 280 grit sandpaper prior to applying a color coat.

Colourtone Touch Up Aerosol

- This aerosol can is for minor touch up only and is not formulated to be used as a Colourtone paint substitute. Light scuff sanding of the defective area with a 320 grit sponge is recommended prior to spray application for increased adhesion. This product is not a final topcoat and must receive a coat of clear surface repair lacquer to match sheen and ensure durability.
- Surface Preparation: Surface should be clean and dry. Remove dirt, grease, oil, wax and loose paint.
- For instructions on the use of touch up aerosol, see directions printed on can label: use outdoors or in a well ventilated area when temperature is between 68° to 78°F (20° to 26°C) and humidity is below 60% to ensure proper drying. Mask surrounding area where over spray might settle. Shake can for at least one minute, listening for rattle of mixing ball. Shake for 10 seconds at 1-2 minute intervals during application. Hold can 6 to 10 inches from surface. Press spray button firmly. Do not cover with continuous spray. Move back and forth releasing spray head after each stroke. Overlap each stroke. Apply two thin coats rather than one heavy coat.
- Clean up: If spray button becomes clogged, pull off and clean with solvent.

DuraGuard Finishing Instructions (continued)

Legal Disclaimers

- DuraGuard finishes are industrial in nature, unlike finishes purchased at a retail store. Although DuraGuard offers a higher quality finish than most finishes, it also is more combustible, more volatile and requires a higher level of expertise to apply. Due to the complexities involved with any finishing process, Conestoga will not be liable for any damages or injury resulting from the use of this product, even when the customer has taken precautions. Conestoga's liability is limited to the original purchase price of the finishing material.
- In order to best match any DuraGuard finish color, it is important to follow the processes outlined on the previous pages. If these steps are not followed, your finished product may not match the products purchased from Conestoga. However, please bear in mind that following these procedures will not always guarantee an exact match. Due to the many variables involved in any finishing process, Conestoga assumes no responsibility if products that are finished by the customer using the DuraGuard System are not an exact match to the finished products sold by Conestoga.

Important Note: All drying times mentioned in this document are to be used as guidelines only. The actual drying time will vary according to the climate in which the finish is applied.

- The DuraGuard Finish System is scientifically designed so that each of the materials, from basecoat or stain, to topcoat, work with one another, thereby providing a beautiful protective finish for your wood products. Finish materials not sold by Conestoga may react unfavorably with DuraGuard finishing materials causing poor topcoat adhesion, discoloration or other problems.
- Color variation can occur on separately ordered jobs. Conestoga cannot guarantee color matches on material ordered at different times. Length of time between orders may also be a factor affecting color variation. Environmental factors where existing material is stored or installed may affect finished products to the degree of causing an appearance different to that of a newly finished product. To better ensure consistency of appearance, Conestoga recommends against placing partial orders.

Health and Safety Information

Refer to SDS for health and safety information. Log on to www.conestogawood.com/sds for 24 hour access to SDS information.

Care and Cleaning of Fine Kitchen Cabinetry

- The DuraGuard topcoat offers the utmost protection for kitchen cabinet applications and provides superior chemical and common kitchen stain resistance while maintaining color and sheen.
- DuraGuard topcoats require minimal care and cleaning. We recommend periodic cleaning with a mild detergent and water solution to remove dirt, dust and grease that buildup with routine usage. Dampen a soft, non-abrasive cloth and wipe entire exterior surface of cabinetry and dry with a soft cloth. Never use a wet cloth that allows water to run down the cabinetry and always dry cabinetry immediately if water is spilled onto the surface.
- Care should be taken not to use abrasive cleansers, ammonia or any other type of harsh chemical. These cleaning agents may cause discoloration, scratching, marring and dulling of the finish. We also discourage use of furniture polishes and waxes on finished cabinetry. Furniture polishes alter the original sheen level and may leave a film on the surface that attracts dust and dirt. These polishes may also cause an irregular or blotchy appearance because they are unable to stand up to many common kitchen stains.

Customer Supplied Parts for Finishing

Customer Name:		Page: of	Order Date:
Ship To:		Customer #:	
		PO #:	
		Shipping Instructions:	
Attention:			
Phone #:			
Description of part to be finished:			
Quantity:	Size: Length _____ Width _____ Height _____		
Specie:		Options:	
<input type="checkbox"/> Stain color _____			
<input type="checkbox"/> Colourtone color _____		<input type="checkbox"/> Photo included <input type="checkbox"/> Drawing Included	
<input type="checkbox"/> Glaze color _____		Manufacturer:	
Topcoat Gloss <input type="checkbox"/> 10° <input type="checkbox"/> 30°		Manufacturer's part number:	
Special Instructions/Sketch:			
Disclaimer I verify that I have read, understand and agree to the terms and conditions on finishing parts supplied by customer on page 8.35 of the Custom Product Manual. Customer supplied parts being sent to Conestoga cannot be transported on Conestoga trucks.			
Signature _____		Date _____	
Failure to sign and return this document could delay the processing of your quote.			

Customer Wiping Stain Match		
Customer Name :	Page: of	Order Date:
Ship To :	Customer#:	
	PO#:	
	Shipping Instructions:	
Attention:		
Phone #:		
Specie:	Grade:	
Stain Color:	Glaze Color:	
Topcoat Sheen <input type="checkbox"/> 10° <input type="checkbox"/> 30°		
<div>Special Instructions:</div>		
<div>Disclaimer I verify that I have read, understand and agree to the terms and conditions on wiping stain match by customer on pages 8.2-8.3 of the Custom Product Manual. Customer supplied wiping stain match being sent to Conestoga cannot be transported on Conestoga trucks.</div>		
Submitted by: _____		Date: _____
Failure to sign and return this document could delay the processing of your quote.		