

Advantage Design and Assembly

Conestoga's precut and machined Framed Cabinet Systems units are designed to assemble quickly and easily. Tools required include a rubber mallet, Phillips Head Screwdriver, and a pin gun (1/2" and 1-1/4" pins).

- Tops and bottoms slide into dovetailed grooves on the cabinet sides. Two 3" wide strips are used for the top of Base cabinets. The back lays into rabbets on the cabinet sides and is secured with glue and pins/staples.
- Sides have pre-inserted splines which easily engage and lock cabinet sides to the front frame. A series of splines are pre-inserted into cabinet tops, bottoms and mid-floors to secure these components to the front frame while adhesives dry.
- 1/2" thick cabinet backs provide a secure surface area for installation screws. Backs are inset 1/4" in from the back edge of cabinet sides to account for irregularities in wall surfaces.
- **Reference assembly instructions** which are available by selecting the box on the order form or downloading from the CBP.

All Plywood Construction

- **Front Frames:** 3/4" thick solid wood with 1-1/2" wide stiles and rails unless otherwise specified. Blind mortise and tenon joints. Non-standard configurations must be ordered as custom front frames.
- **Cabinet Sides:** 1/2" thick plywood with prefinished White Birch veneer on the interior face.
- **Cabinet Tops:** 1/2" thick plywood with prefinished White Birch veneer on the interior face. Most Base cabinets have open tops with two 1/2" thick x 3" deep plywood support strips running across the full width of the cabinet in the front and back. Base Sink and Vanity Sink cabinets include cut-back support strips that run front to back to ease sink installation. Some Specialty cabinets have full tops.
- **Cabinet Bottoms:** 1/2" thick plywood with prefinished White Birch veneer on the interior face.
- **Cabinet Backs:** 1/2" thick plywood with prefinished White Birch veneer on the interior face.
- **Shelves:** 3/4" thick White Birch plywood with a banded front edge. Both sides of White Birch plywood shelves are finished with a UV topcoat. Shelf height is adjustable in 32mm increments. Plywood shelves are standard and can be upgraded to a solid Natural Birch wood shelf on most cabinets.
- **Drawer Boxes:** English dovetail construction. 5/8" thick solid wood with eased top edge. 1/4" thick bottoms are standard; 3/8" thick bottoms with additional drawer box options are available. Drawer boxes are finished with a durable UV topcoat. Natural Birch is standard, Hard Maple and Walnut upgrades are available.
- **Toeboard Backers:** 1/2" thick plywood with prefinished White Birch veneer on both sides. Designed to fully enclose toe space and provide support for applied finished toeboards.
- **Toeboard Strips:** Available in 4" high x 8' long x 1/2" thick plywood strips in Cherry, Hard Maple or Red Oak.
- **Prefinished Interior:** Clear UV topcoat on interiors is standard. The UV topcoat is on the interior of the backs, tops, bottoms and sides. If you wish to finish the interior cabinet surfaces order Matching Specie Interior Option.
- **Matching Specie Interior:** Matching Specie Interior cabinets are unfinished. Drawer box parts and solid wood shelf upgrades are not available with Matching Specie Interior and will be finished with a durable UV topcoat.

Specie	Advantage Component Specie Availability											
	Cabinet Case Species	Doors/Drawer Fronts	Front Frame	Matching Interior	Flush Ends	Exposed Ends	Door End Panel	Mouldings	1/4" Cut-to-Size	1/2" Cut-to-Size	3/4" Cut-to-Size Plywood	Wood Edgeband
Alder	No	Yes	Yes	No	No	No	Yes	Yes	Yes	No	No	Yes
Bamboo	No	Yes	Yes	No	No	No	Yes	Yes	Yes	No	Yes	Yes
Birch, Red	No	Yes	Yes	No	No	No	Yes	Yes	Yes	No	No	No
Birch, White	No	Yes*	Yes*	No	No	No	Yes*	Yes	Yes	No	No	Yes
Cherry	Yes	Yes*	Yes*	Yes	Yes	Yes	Yes*	Yes	Yes	Yes	Yes	Yes
Hickory	No	Yes*	Yes*	No	No	No	Yes*	Yes	Yes	No	No	Yes
Mahogany	No	Yes	Yes	No	No	No	Yes	Yes	Yes	No	No	No
Maple, Hard	Yes	Yes*	Yes*	Yes	Yes	Yes	Yes*	Yes	Yes	Yes	Yes	Yes
Maple, Soft	Yes	Yes	Yes	Yes**	Yes**	Yes**	Yes	Yes	Yes**	Yes**	Yes**	Yes**
Oak, Red	Yes	Yes*	Yes*	Yes	Yes	Yes	Yes*	Yes	Yes	Yes	Yes	Yes
Oak, Red, Rift Cut	No	Yes	Yes	No	No	No	Yes	No	Yes	No	Yes	No
Oak, White	No	Yes*	Yes*	No	No	No	Yes*	Yes	Yes	No	No	Yes
Oak, White, Quarter Sawn	No	Yes	No	No	No	No	Yes	No	Yes	No	Yes	No
Oak, White, Rift Cut	No	Yes	Yes	No	No	No	Yes	No	Yes	No	Yes	No
Paint Grade	No	Yes	Yes	Yes	Yes	Yes	Yes	Yes	No	No	No	No
Paint Grade Hard Maple	No	Yes	Yes	Yes	Yes	Yes	Yes	Yes	Yes	No	No	No
Pine, Clear	No	Yes*	Yes*	No	No	No	Yes*	Yes	Yes*	No	No	No
Pine, Knotty	No	Yes	Yes	No	No	No	Yes	Yes	Yes	No	No	No
MDF	No	Yes	No	No	No	No	Yes	No	Yes	Yes	Yes	No
Walnut	No	Yes*	Yes*	No	No	No	Yes*	Yes	Yes	No	Yes	Yes

Standard plywood case has a White Birch interior with UV topcoat and an unfinished Natural Birch exterior. For specie modification, select from Matching Interior (MI), Exposed End (EXP) or Flush End (FL) options.

*Specie is also available in Premium grade for doors and drawer fronts only. Material upcharge applies.

**When Soft Maple is ordered, plywood components are produced using Hard Maple plywood. Solid wood components are produced using Soft Maple.

Door Overlays

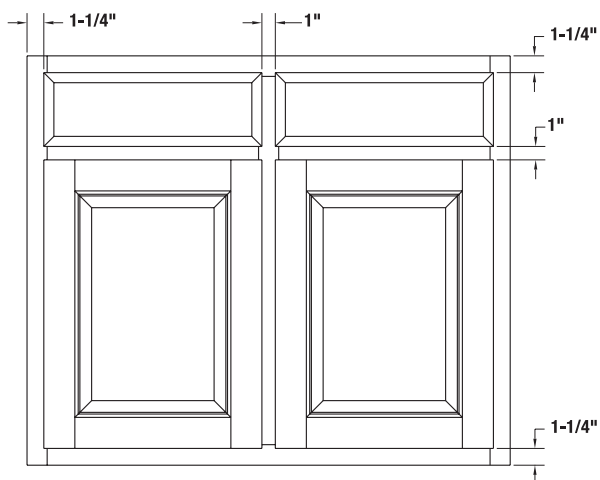
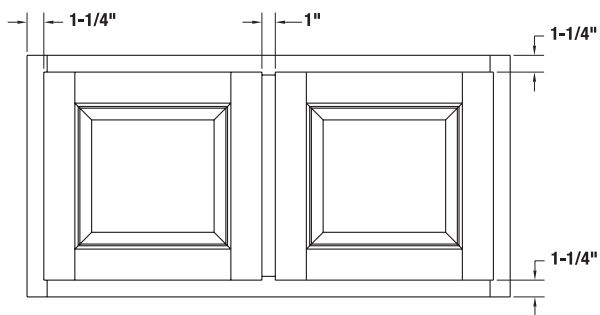
Advantage Framed Cabinetry offers four standard overlays and inset doors. Standard overlays include 1/4", 1/2", 1-1/4" and 1-3/8". When you select either 1-1/4" or 1-3/8" overlays, Extended Stiles or Loose Filler Strips may be required for applications where cabinets are installed adjacent to a wall or Tall cabinet to ensure adequate clearance. The need for Extended Stiles or Loose Filler Strips is dependent on the type of hinge used. Corner cabinets include special hinges.

The following page includes diagrams illustrating the various overlays, the spacing between doors, and distance from the door's edge to the outer edge of the front frame.

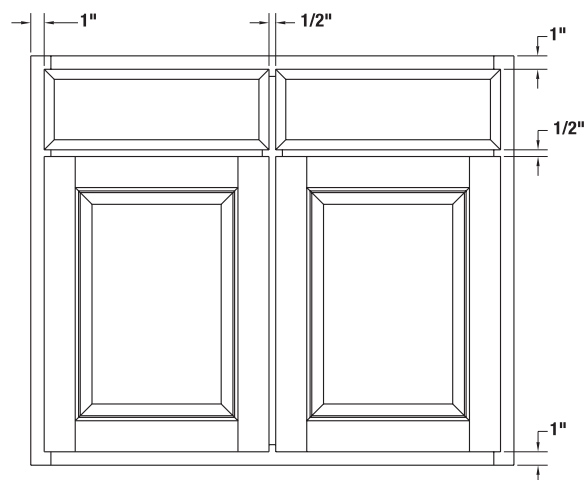
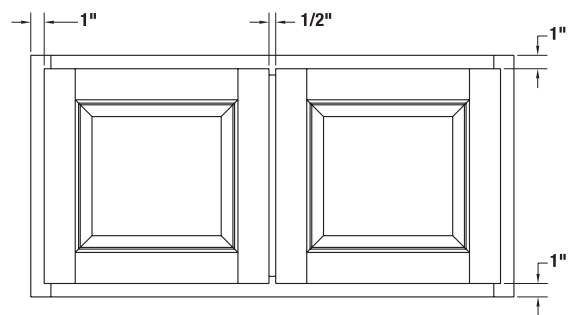
Note: Butt Door Cabinets have 1/8" spacing between doors and drawer fronts regardless of the selected overlay.

Overlay Diagrams (w/center stile)

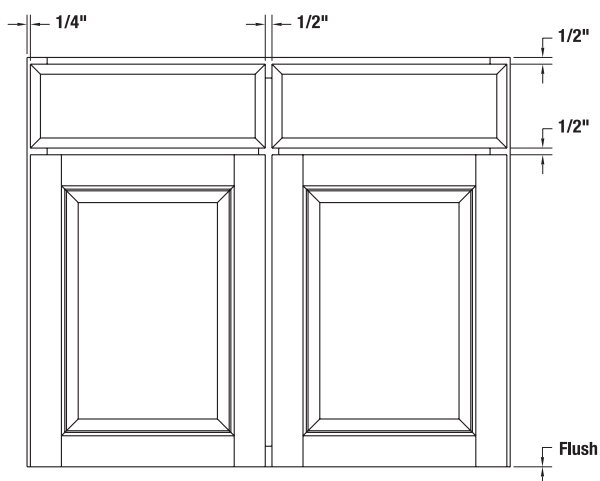
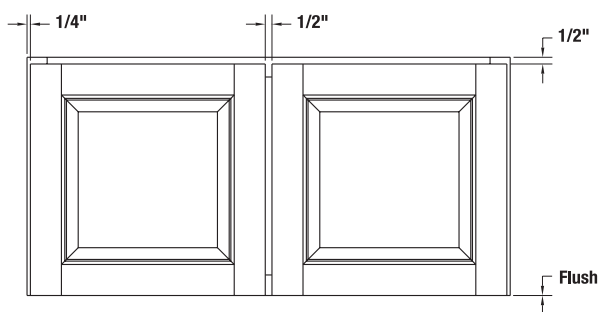
1/4" Overlay



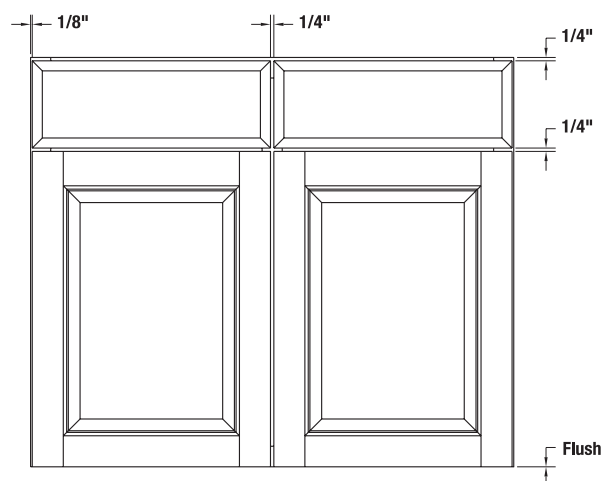
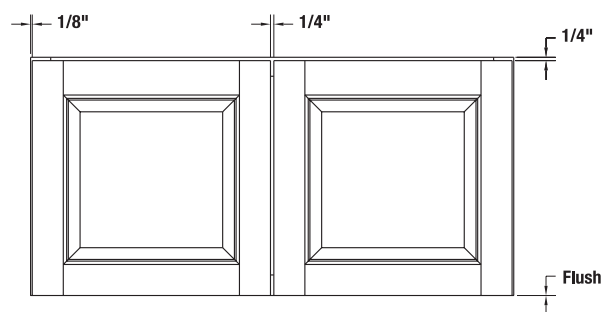
1/2" Overlay



1-1/4" Overlay



1-3/8" Overlay



Advantage Inset Door and Drawer Information

- Front frames ordered with inset doors and drawer fronts will be pre-fit to the cabinet opening size. A 3/32" margin will be used on all sides for single doors and drawer fronts, and between butt door pairs.
- The following edge profile options are recommended for use with inset doors and drawer fronts. These edges have a 5° back bevel edge to ensure sufficient door clearance. Machine Edge is available upon request with no upcharge.

Standard Edge Profile Options



L-253



L-686

Design Exceptions

- The following door and drawer front designs are not available for inset applications due to their unique design characteristics: 1-1/8" Sandwiched Drawer Front, #10 Drawer Front, 10141 Drawer Front Alexandria, Aspen, AspenPP, Astoria, Boulder, BoulderPP, CRP-1420, CRP-10191, CRP-10318, CRP-10334, CRP-10827, CRP-10875, CRP-10946, Fairhaven, Fargo, FargoPP, Flush Batten, Hastings, Juno, Keystone Drawer Front, LaSalle, Marcel Drawer Front, Omaha, OmahaPP, Prestige, Rothbury, Rothsford, Savoy, Topeka, TopekPP, TW-10827, Venus, Venus78, and Woodhull.
- Alexandria, Juno, Venus and Venus78 door and drawer front designs are available for inset applications only when ordered with Machine Edge or L-253 edge profiles.
- Alternative Material doors and drawer fronts are unavailable for inset applications including Allure DLV, Intrigue TTS, Strata TTS, Vogue TTS, Synchronicity High Gloss and Super Matte products.
- L-253 and L-686 are standard edge profile options for inset applications. Premium edge profiles L-304 and L-996 are available, an upcharge applies.
- Front frame openings with trimmable inserts are not available beaded.
- Inset and beaded front frames ordered with Colourtones and glazes will receive the same hand glazed finishes on doors, drawer fronts and mouldings.

Inset Door and Drawer Information (continued)

Inset Option with Miter Designs - Not Recommended

Only miter door designs with edge profile options are available with the inset option; however, miter designs are not recommended with the inset option. The following issues are associated with inset miter designs, and **will not be considered defective if chosen**:

- Miter joints may not intersect with the door corner after pre-fit sanding. This is not considered a defect as it is a necessary part of the pre-fit process to ensure the proper fit within the frame openings. This condition may not be pleasing to some customers.
- Panel expansion caused by high humidity conditions may cause miter doors to bind inside frame openings. Although Conestoga's miter door joint construction is one of the most durable in the industry, high humidity will cause solid wood center panels to expand in width. This pressure can result in the framing pushing outward and creating a "barrel" effect where the framing rubs against the front frame.
- If a miter design is selected, it is highly recommended that doors and drawer fronts be manufactured as 5-piece MDF, Hybrid products or products with plywood center panels. These materials will reduce the likelihood of product expansion and binding of inset doors within the front frame. While reducing the possibility of binding, expansion of solid wood framing can still occur and will not be considered defective.

Inset Door Diagram (w/center stile)

