

## Advantage Wall Cabinet Standard Features and Options

The information described below are some of the features and options of the Advantage Wall cabinets. Customers have the option to omit these standard features as well as add other design options, which can be quickly referenced at the bottom of each page in the Wall Cabinet Section labeled "Wall Options Key". For more detailed descriptions and images of all available options see Options, Section 12 within this manual. The options described below are available on all Wall cabinets unless specifically noted next to the individual cabinet as **Unavailable Options**.

**Standard Shelving & Omit Shelving (OS)** – 3/4" thick White Birch plywood shelving with a durable UV topcoat is standard with any Wall cabinet with shelves. If shelving is not desired within a specific cabinet, indicate **Omit Shelving Option** when ordering.

**5mm Shelf Holes & No Shelf Holes (NSH)** – Pre-drilled 5mm shelf holes on 32mm centers are a standard feature of all Wall cabinets with shelves. If shelf holes are not desired, indicate **No Shelf Holes Option** when ordering. **Note:** If shelving and shelf holes are not desired, both No Shelf Holes and Omit Shelving must be specified when ordering.

**Cabinet Case Material Options** – Most optional cabinet case materials will match the door, drawer front and face frame specie and are available with Wall cabinets produced in standard Advantage species.

- **Exposed Ends (EXP)** – Matching specie veneer on the exterior face of 1/2" thick plywood cabinet sides. The interior of plywood Exposed Ends will remain as White Birch.
- **Flush Ends (FL)** – Matching specie veneer on the exterior face of 3/4" thick plywood cabinet flush sides. The interior of plywood Flush Ends will remain as White Birch.
- **Flush Unexposed Ends (FUE)** – Non-matching specie veneer on the exterior face of the 3/4" thick flush plywood cabinet sides. Designed to be utilized when extra support is desired from non-exposed flush end panels. The interior of the plywood Flush Unexposed Ends will remain as White Birch.
- **Matching Interior (MI)** – Matching specie veneer is available on all internal cabinet parts. The Matching Interior Option is not available in combination with the Solid Wood Shelf Upgrade Option.

**Solid Wood Shelf Upgrade (WS)** – The **Solid Wood Shelf Upgrade Option** replaces the standard White Birch prefinished plywood shelving with solid Natural Birch shelving. The Solid Wood Shelving is 3/4" thick with a bullnosed front edge and finished with a UV topcoat. The Solid Wood Shelf Upgrade Option is not available in combination with the Matching Interior Option or when Wall cabinets are deeper than 24". Solid shelving available up to 18" deep.

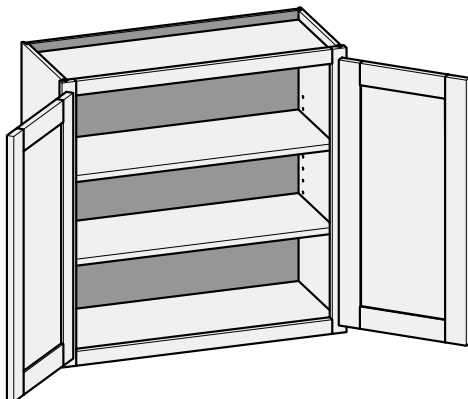
**Natural Finished Bottom (NB)** – The **Natural Finished Bottom Option** provides a UV topcoat on the exterior of the top and bottom of the Wall cabinet. When the Natural Finished Bottom Option is selected, cabinet top and bottom exteriors will be upgraded to a White Birch plywood.

**Extended Stiles (EXT)** – The **Extended Stile Option** provides additional width on the left, right or both stiles of the front frame. This additional material provides clearance between the cabinet and adjacent walls or other cabinetry allowing cabinet doors and drawers to fully open without interference. Extended stiles also provide the opportunity to scribe the frame to the wall contours during the installation process.

**Prep for False Door Side (PFD)** – The **Prep for False Door Side Option** maintains the overall front frame width ordered, but relocates the cabinet side panel, moving it inward by 13/16" for each Prep for False Door Side ordered. This creates a 3/4" reveal behind the 1-1/2" front frame stile to accommodate the decorative door end panel. The Prep for False Door Side Option can be ordered for the left, right or both cabinet sides. All cabinet components are automatically resized accordingly when the Prep for False Door Side Option is selected.

**W/CSW - Wall Cabinet**

Custom Size Ranges  
 Single Door Width: 9" – 24"  
 Butt Door Width: 24" – 36"  
 Height: 12" – 72"  
 Depth: 5-1/2" – 27"



- 12" – 18" high has no shelves.
- 18-1/16" – 24" high has one shelf.
- 24-1/16" – 36" high has two shelves.
- 36-1/16" – 48" high has three shelves.
- 48-1/16" – 60" high has four shelves.
- 60-1/16" – 72" high has five shelves.
- Specify single or butt doors on custom size cabinets 24" wide.

**Single Door Cabinet - 12-1/2" Deep**

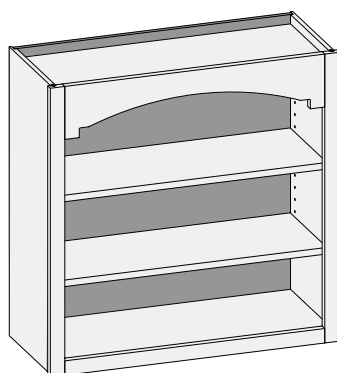
| 30" High | 36" High | 42" High |
|----------|----------|----------|
| W0930    | W0936    | W0942    |
| W1230    | W1236    | W1242    |
| W1530    | W1536    | W1542    |
| W1830    | W1836    | W1842    |
| W2130    | W2136    | W2142    |
| W2430    | W2436    | W2442    |

**Butt Door Cabinets - 12-1/2" Deep**

| 12" High | 15" High | 18" High | 21" High | 24" High | 27" High | 30" High | 36" High | 42" High |
|----------|----------|----------|----------|----------|----------|----------|----------|----------|
| W2412BD  | W2415BD  | W2418BD  | W2421BD  | W2424BD  | W2427BD  | W2430BD  | W2436BD  | W2442BD  |
| W2712BD  | W2715BD  | W2718BD  | W2721BD  | W2724BD  | W2727BD  | W2730BD  | W2736BD  | W2742BD  |
| W3012BD  | W3015BD  | W3018BD  | W3021BD  | W3024BD  | W3027BD  | W3030BD  | W3036BD  | W3042BD  |
| W3312BD  | W3315BD  | W3318BD  | W3321BD  | W3324BD  | W3327BD  | W3330BD  | W3336BD  | W3342BD  |
| W3612BD  | W3615BD  | W3618BD  | W3621BD  | W3624BD  | W3627BD  | W3630BD  | W3636BD  | W3642BD  |

**Butt Door Cabinets - 24" Deep**

| 12" High | 15" High | 18" High | 21" High | 24" High | 27" High |
|----------|----------|----------|----------|----------|----------|
| WD3012BD | WD3015BD | WD3018BD | WD3021BD | WD3024BD | WD3027BD |
| WD3312BD | WD3315BD | WD3318BD | WD3321BD | WD3324BD | WD3327BD |
| WD3612BD | WD3615BD | WD3618BD | WD3621BD | WD3624BD | WD3627BD |

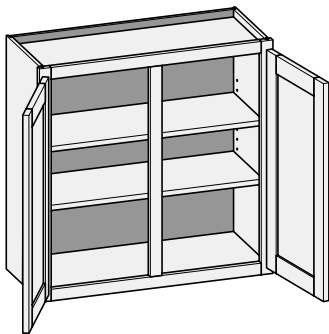
**CSWOU - Wall Open Unit**


Custom Size Ranges  
 Width: 15" – 48"  
 Height: 30" – 72"  
 Depth: 5-1/2" – 27"

- Available with valance designs on top rail (see pg. 12.6 for Valance Options). To order specify using CWS designations associated with the valance designs.
- Top rail is 5-1/2" for all valance designs.
- If no valance design is selected, top rail is 1-1/2" wide.
- Minimum width is 15".
- 18" – 24" high has one shelf.
- 24-1/16" – 36" high has two shelves.
- 36-1/16" – 48" high has three shelves.
- 48-1/16" – 59-15/16" high has four shelves.
- 60" – 72" high has five shelves.

**Wall Options Key:** EXP = Exposed End(s) FL = Flush End(s) FUE = Flush Unexposed End(s) PFD = Prep for False Door EXT = Extended Stile(s)  
 OS = Omit Shelving NSH = No Shelf Holes WS = Solid Wood Shelves MI = Matching Interior NB = Natural Finished Bottom

## W/CSWCS - Wall Cabinet w/Center Stile



Custom Size Ranges  
Width: 27" – 48"  
Height: 12" – 72"  
Depth: 5-1/2" – 27"

- 12" – 18" high has no shelves.
- 18-1/16" – 24" high has one shelf.
- 24-1/16" – 36" high has two shelves.
- 36-1/16" – 48" high has three shelves.
- 48-1/16" – 60" high has four shelves.
- 60-1/16" – 72" high has five shelves.

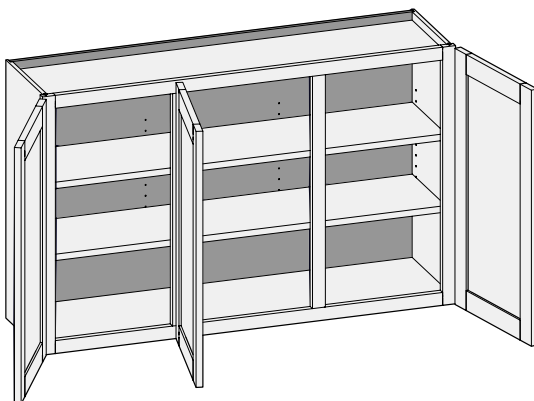
### 12 -1/2" Deep

| 12" High | 15" High | 18" High | 21" High | 24" High | 27" High | 30" High | 36" High | 42" High |
|----------|----------|----------|----------|----------|----------|----------|----------|----------|
| W3012    | W3015    | W3018    | W3021    | W3024    | W3027    | W3030    | W3036    | W3042    |
| W3312    | W3315    | W3318    | W3321    | W3324    | W3327    | W3330    | W3336    | W3342    |
| W3612    | W3615    | W3618    | W3621    | W3624    | W3627    | W3630    | W3636    | W3642    |
| W3912    | W3915    | W3918    | W3921    | W3924    | W3927    | W3930    | W3936    | W3942    |
| W4212    | W4215    | W4218    | W4221    | W4224    | W4227    | W4230    | W4236    | W4242    |
| W4812    | W4815    | W4818    | W4821    | W4824    | W4827    | W4830    | W4836    | W4842    |

### 24" Deep

| 12" High | 15" High | 18" High | 21" High | 24" High | 27" High |
|----------|----------|----------|----------|----------|----------|
| WD3012   | WD3015   | WD3018   | WD3021   | WD3024   | WD3027   |
| WD3312   | WD3315   | WD3318   | WD3321   | WD3324   | WD3327   |
| WD3612   | WD3615   | WD3618   | WD3621   | WD3624   | WD3627   |
| WD3912   | WD3915   | WD3918   | WD3921   | WD3924   | WD3927   |

## W/CSW2CS - Wall Cabinet w/Two Center Stiles

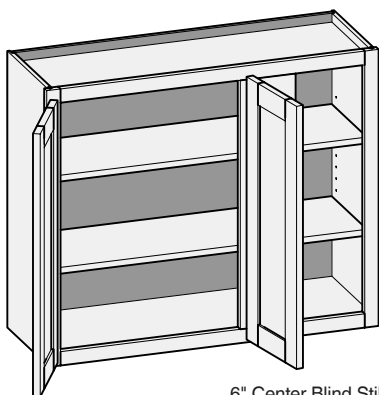


Custom Size Ranges  
Width: 48" – 72"  
Height: 12" – 72"  
Depth: 5-1/2" – 27"

- Additional shelf holes are provided in cabinet back to support wide shelves.
- Doors hinged on center stile require 1/2" overlay hinges for 1-1/4" or 1-3/8" overlay.
- 12" – 18" high has no shelves.
- 18-1/16" – 24" high has one shelf.
- 24-1/16" – 36" high has two shelves.
- 36-1/16" – 48" high has three shelves.
- 48-1/16" – 60" high has four shelves.
- 60-1/16" – 72" high has five shelves.
- Unavailable Options: WS.

| 30" High | 36" High | 42" High |
|----------|----------|----------|
| W5130    | W5136    | W5142    |
| W5430    | W5436    | W5442    |
| W5730    | W5736    | W5742    |
| W6030    | W6036    | W6042    |
| W6330    | W6336    | W6342    |
| W6630    | W6636    | W6642    |
| W6930    | W6936    | W6942    |
| W7230    | W7236    | W7242    |

**Wall Options Key:** EXP = Exposed End(s) FL = Flush End(s) FUE = Flush Unexposed End(s) PFD = Prep for False Door EXT = Extended Stile(s)  
OS = Omit Shelving NSH = No Shelf Holes WS = Solid Wood Shelves MI = Matching Interior NB = Natural Finished Bottom

**WBC/CSWBC - Wall Blind Corner**


6" Center Blind Stile

## Custom Size Ranges

Single Door Width: 27" – 36"

Butt Door Width: 36" – 48"

Height: 12" – 72"

Depth: 5-1/2" – 27"

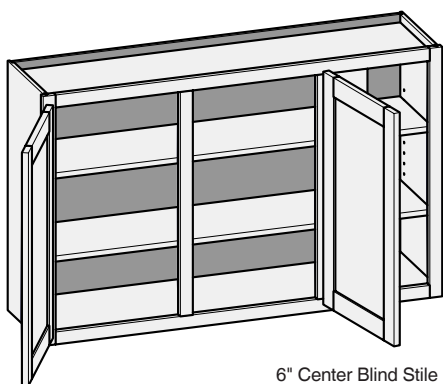
- Units are reversible (left shown).
- Designed to be used with adjacent 12-1/2" deep cabinet.
- 7-1/2" blind opening (fixed).
- 12" – 18" high has no shelves.
- 18-1/16" – 24" high has one shelf.
- 24-1/16" – 36" high has two shelves.
- 36-1/16" – 48" high has three shelves.
- 48-1/16" – 60" high has four shelves.
- 60-1/16" – 72" high has five shelves.
- Specify single or butt doors on custom cabinets 36" wide.

## Single Door Cabinets - 12-1/2" Deep

| 30" High | 36" High | 42" High |
|----------|----------|----------|
| WBC2730  | WBC2736  | WBC2742  |
| WBC3030  | WBC3036  | WBC3042  |
| WBC3630  | WBC3636  | WBC3642  |

## Butt Door Cabinets - 12-1/2" Deep

| 30" High  | 36" High  | 42" High  |
|-----------|-----------|-----------|
| WBC4230BD | WBC4236BD | WBC4242BD |
| WBC4830BD | WBC4836BD | WBC4842BD |

**WBC/CSWBCCS - Wall Blind Corner w/Center Stile**


6" Center Blind Stile

## Custom Size Ranges

Width: 36" – 48"

Height: 12" – 72"

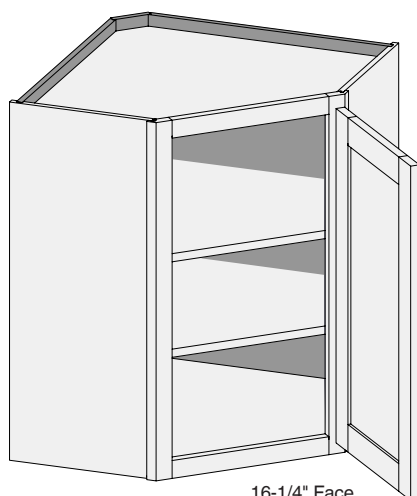
Depth: 5-1/2" – 27"

- Units are reversible (left shown).
- Designed to be used with adjacent 12-1/2" deep cabinet.
- 7-1/2" blind opening (fixed).
- 12" – 18" high has no shelves.
- 18-1/16" – 24" high has one shelf.
- 24-1/16" – 36" high has two shelves.
- 36-1/16" – 48" high has three shelves.
- 48-1/16" – 60" high has four shelves.
- 60-1/16" – 72" high has five shelves.

## 12-1/2" Deep

| 30" High | 36" High | 42" High |
|----------|----------|----------|
| WBC4230  | WBC4236  | WBC4242  |
| WBC4830  | WBC4836  | WBC4842  |

## WCS/CSWCSE - Wall Corner Single Entry



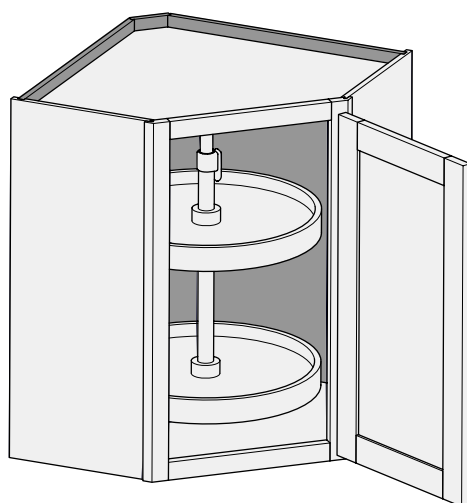
16-1/4" Face  
17-3/8" Frame  
Width

Custom Size Ranges  
Width: 24", 27"  
Height: 24" – 72"  
Depth: 24", 27"

- WCS24 units have 12-1/2" deep sides.
- WCS27 units have 15-1/2" deep sides.
- Shelf-mounted wood susan shelves are available. See Section 11 – Accessories.
- When ordered with 1-1/4" and 1-3/8" overlay applications (with or without hinges), cabinets will have their door sized as 1/2" overlay in width only to ensure adequate clearance.
- 24" – 36" high has two shelves.
- 36-1/16" – 48" high has three shelves.
- 48-1/16" – 60" high has four shelves.
- 60-1/16" – 72" high has five shelves.
- Unavailable Options: PFD and EXT.

| 30" High | 36" High | 42" High |
|----------|----------|----------|
| WCS2430  | WCS2436  | WCS2442  |
| WCS2730  | WCS2736  | WCS2742  |

## WCSELS – Wall Corner Single Entry with Lazy Susan

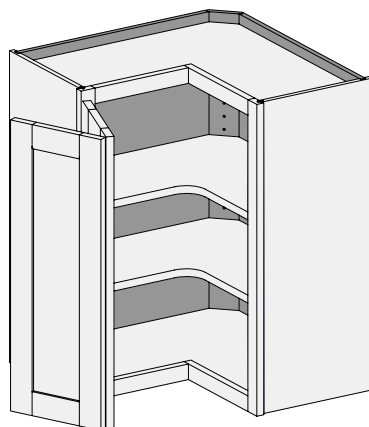


16-1/4" Face  
17-3/8" Frame  
Width

Custom Size Ranges  
Width: 24", 27"  
Height: 30"  
Depth: 24", 27"

- Cabinet top and bottom is pre-drilled to accept hub assembly. Location and installation are greatly simplified.
- Cabinet includes 18" diameter entry level plastic susan with two independently rotating shelves mounted on a center pole.
- White susan shelves feature a self-lubricating nylon bearing and tool-free height adjustment.
- Size customization is not available due to susan size constraints.
- WCSELS24 has 12-1/2" deep sides.
- WCSELS27 has 15-1/2" deep sides.
- When ordered with 1-1/4" and 1-3/8" overlay applications (with or without hinges), cabinets will have their door sized as 1/2" overlay in width only to ensure adequate clearance.
- Not available with inset applications.
- Unavailable Options: PFD and EXT.

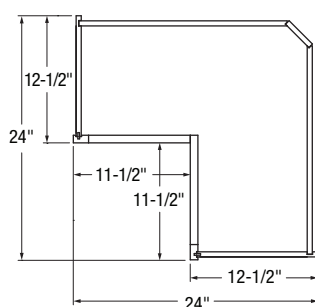
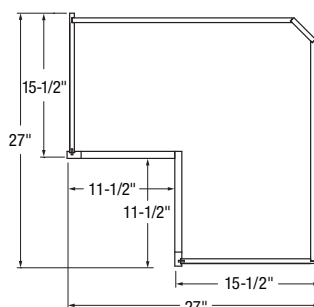
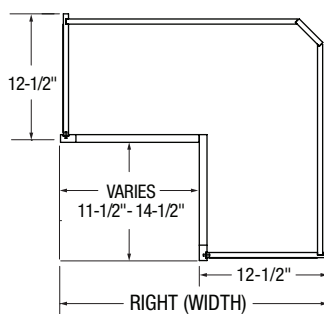
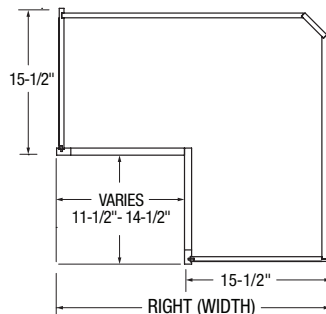
| Cabinet Code |
|--------------|
| WCSELS2430   |
| WCSELS2730   |

**WCP/CSWCP - Wall Corner Pie Cut**

**Custom Size Ranges**

24" Wide:  
Width: 24" – 27"  
Height: 24" – 72"  
Depth: 24" – 27"

27" Wide:  
Width: 27" – 30"  
Height: 24" – 72"  
Depth: 27" – 30"

- WCP24 unit has 12-1/2" deep sides.
- WCP27 unit has 15-1/2" deep sides.
- When hinges are ordered with 1-1/4" and 1-3/8" overlay applications, cabinets will have their doors sized as 1/2" overlay in width only to ensure proper clearance.
- If hinges are not specified, 1-1/4" and 1-3/8" overlay sizing rules apply. These overlays require adequate clearance for door functionality between corner and adjacent cabinets. Use filler or extended stiles accordingly.
- CSWCP available with custom size legs. Specify width (left dimension) and depth (right dimension). Side depth remains fixed; front frame pie cut opening adjusts as size changes.
- Wood shelf upgrade not available with CSWCP.
- Shelf-mounted wood susan shelves are available. See Section 11 – Accessories.
- Optional Soss hinges available.
- 24" – 36" high has two shelves.
- 36-1/16" – 48" high has three shelves.
- 48-1/16" – 60" high has four shelves.
- 60-1/16" – 72" high has five shelves.
- Unavailable Option: PFD.

**WCP24**

**WCP27**

**CSWCP24**

**CSWCP27**

**Custom Size Ranges**

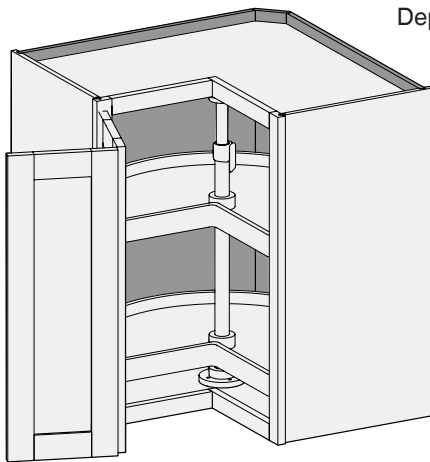
|        | 12-1/2" deep sides | 15-1/2" deep sides |
|--------|--------------------|--------------------|
| Width  | 24" – 27"          | 27" – 30"          |
| Height | 24" – 48"          | 24" – 48"          |
| Depth  | 24" – 27"          | 27" – 30"          |

| 30" High | 36" High | 42" High |
|----------|----------|----------|
| WCP2430  | WCP2436  | WCP2442  |
| WCP2730  | WCP2736  | WCP2742  |

**Wall Options Key:** EXP = Exposed End(s) FL = Flush End(s) FUE = Flush Unexposed End(s) PFD = Prep for False Door EXT = Extended Stile(s)  
OS = Omit Shelving NSH = No Shelf Holes WS = Solid Wood Shelves MI = Matching Interior NB = Natural Finished Bottom

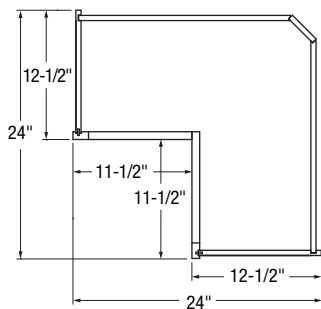
## WCPLS/CSWCPLS – Wall Corner Lazy Susan

Custom Size Ranges  
Width: 24", 27"  
Height: 30"  
Depth: 24", 27"

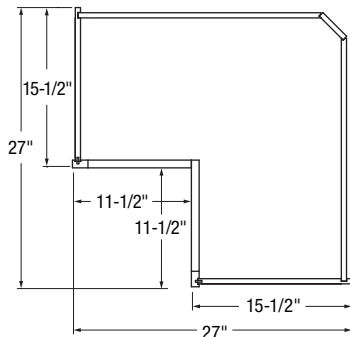


- Cabinet top and bottom is pre-drilled to accept hub assembly.
- Cabinet includes entry level plastic susan with two independently rotating kidney shelves mounted on a center pole.
- White susan shelves feature a self-lubricating nylon bearing and tool-free height adjustment.
- WCPLS24 has 12-1/2" deep sides and 18" diameter susan shelves.
- WCPLS27 has 15-1/2" deep sides and 24" diameter susan shelves.
- Height customization is not available due to susan unit size constraints.
- When hinges are ordered with 1-1/4" and 1-3/8" overlay applications, cabinets will have their door sized as 1/2" overlay in width only.
- If hinges are not specified, 1-1/4" and 1-3/8" overlay sizing rules apply. These overlays require adequate clearance for door functionality between corner and adjacent cabinets. Use filler or extended stiles accordingly.
- Not available with inset applications.
- Optional Soss hinges available.
- Unavailable Option: PFD.

**WCLS2430**



**WCLS2730**



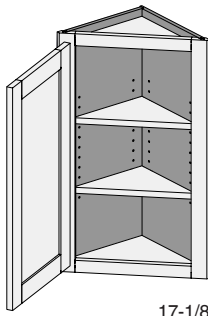
### Cabinet Code

WCPLS2430

WCPLS2730



## WAE/CSWAE - Wall Angle End



17-1/8" Face  
17-11/16" Frame Width

2-3/32" Stiles

Custom Size Ranges  
Width: 12-1/2"  
Height: 12" – 72"  
Depth: 12-1/2"

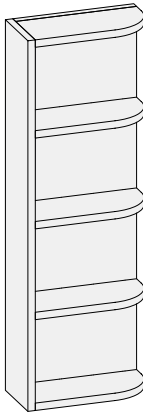
- Concealed inset hinges are not available.
- 12" – 18" high has no shelves.
- 18-1/16" – 24" high has one shelf.
- 24-1/16" – 36" high has two shelves.
- 36-1/16" – 48" high has three shelves.
- 48-1/16" – 60" high has four shelves.
- 60-1/16" – 72" high has five shelves.
- Unavailable Options: EXP, FL, FUE, PFD, EXT.

| 30" High | 36" High | 42" High |
|----------|----------|----------|
| WAE1230  | WAE1236  | WAE1242  |

6

Advantage Wall Cabinets

## WOS/CSWOS - Wall Open Shelf

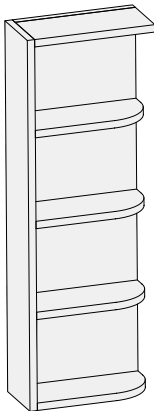


Custom Size Ranges  
Width: 6"  
Height: 12" – 48"  
Depth: 12-1/2" – 27"

- Standard as shown. No options available.
- Reversible.
- 3/4" matching specie plywood with dowel construction.
- Exposed edges are banded with matching specie veneer.
- Hard Maple plywood utilized for Hard and Soft Maple lines.
- 12" – 17-15/16" high has two shelves.
- 18" – 23-15/16" high has three shelves.
- 24" – 35-15/16" high has four shelves.
- 36" – 48" high has five shelves.
- Matching Interior (MI) Standard.

| 12-1/2" Deep |          |          |
|--------------|----------|----------|
| 30" High     | 36" High | 42" High |
| WOS0630      | WOS0636  | WOS0642  |

## WOSST/CSWOSST - Wall Open Shelf Square Top



Custom Size Ranges  
Width: 6"  
Height: 12" – 48"  
Depth: 12-1/2" – 27"

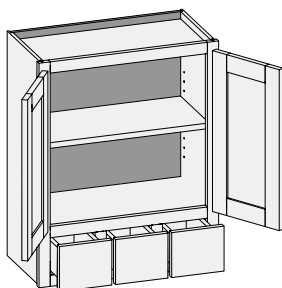
- Standard as shown. No options available.
- 3/4" matching specie plywood with dowel construction.
- Exposed edges are banded with matching specie veneer.
- Hard Maple plywood utilized for Hard and Soft Maple lines.
- 12" – 17-15/16" high has two shelves.
- 18" – 23-15/16" high has three shelves.
- 24" – 35-15/16" high has four shelves.
- 36" – 48" high has five shelves.
- Matching Interior (MI) Standard.

| 12-1/2" Deep |           |           |
|--------------|-----------|-----------|
| 30" High     | 36" High  | 42" High  |
| WOSST0630    | WOSST0636 | WOSST0642 |

**Wall Options Key:** EXP = Exposed End(s) FL = Flush End(s) FUE = Flush Unexposed End(s) PFD = Prep for False Door EXT = Extended Stile(s)  
 OS = Omit Shelving NSH = No Shelf Holes WS = Solid Wood Shelves MI = Matching Interior NB = Natural Finished Bottom



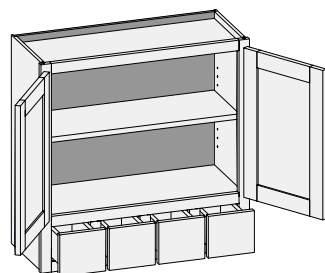
### CSWS3D - Wall Spice Three Drawer w/Butt Doors



Custom Size Ranges  
Width: 24" – 29-15/16"  
Height: 30" – 72"  
Depth: 5-1/2" – 27"

- No drawer slides.
- When height changes, upper opening height changes. Lower opening height fixed at 5".
- 30" – 35" high has one shelf.
- 35-1/16" – 42" high has two shelves.
- 42-1/16" – 48" high has three shelves.
- 48-1/16" – 60" high has four shelves.
- 60-1/16" – 72" high has five shelves.

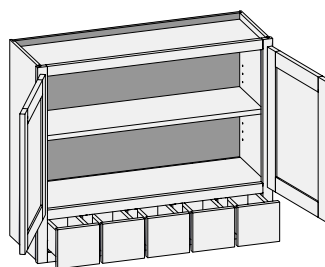
### CSWS4D - Wall Spice Four Drawer w/Butt Doors



Custom Size Ranges  
Width: 30" – 35-15/16"  
Height: 30" – 72"  
Depth: 5-1/2" – 27"

- No drawer slides.
- When height changes, upper opening height changes. Lower opening height fixed at 5".
- 30" – 35" high has one shelf.
- 35-1/16" – 42" high has two shelves.
- 42-1/16" – 48" high has three shelves.
- 48-1/16" – 60" high has four shelves.
- 60-1/16" – 72" high has five shelves.

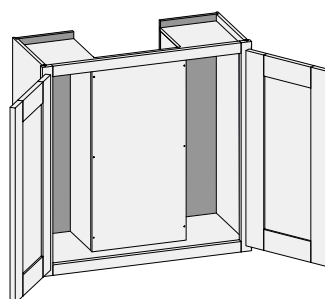
### CSWS5D - Wall Spice Five Drawer w/Butt Doors



Custom Size Ranges  
Width: 36"  
Height: 30" – 72"  
Depth: 5-1/2" – 27"

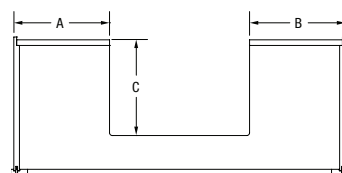
- No drawer slides.
- When height changes, upper opening height changes. Lower opening height fixed at 5".
- 30" – 35" high has one shelf.
- 35-1/16" – 42" high has two shelves.
- 42-1/16" – 48" high has three shelves.
- 48-1/16" – 60" high has four shelves.
- 60-1/16" – 72" high has five shelves.

### CSWRC3 – Wall w/ 3 Sided Recessed Back



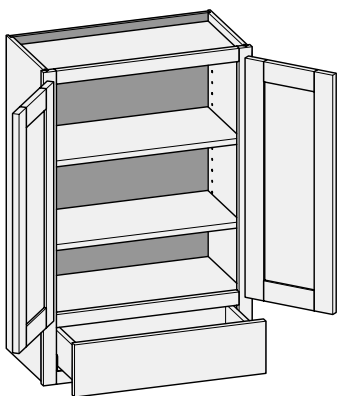
Custom Size Ranges  
Width: 24" – 36"  
Height: 12" – 48"  
Depth: 12" – 27"

- Designed to accommodate and conceal ductwork, electric or plumbing supply lines.
- Front panel is removable for installation and access to supply lines.
- To customize recess size and location, specify A, B and C.
- Recess can be centered or offset from either side.
- Minimum dimensions for A, B and C: 2".
- Maximum dimensions for A and B: Cabinet width minus A + B equal to or greater than 2".
- Maximum dimension for C: Cabinet depth minus 2".
- No shelves.
- Specify single or butt doors on custom size cabinets 24" wide.
- Unavailable Options: PFD and MI.



WRC3 Top View

**Wall Options Key:** EXP = Exposed End(s) FL = Flush End(s) FUE = Flush Unexposed End(s) PFD = Prep for False Door EXT = Extended Stile(s)  
OS = Omit Shelving NSH = No Shelf Holes WS = Solid Wood Shelves MI = Matching Interior NB = Natural Finished Bottom

**W1D/CSW1D - Wall One Drawer**


Custom Size Ranges  
 Single Door Width: 12" – 24"  
 Butt Door Width: 24" – 36"  
 Height: 30" – 72"  
 Depth: 12", 12-1/2",  
 15", 18", 21", 24"

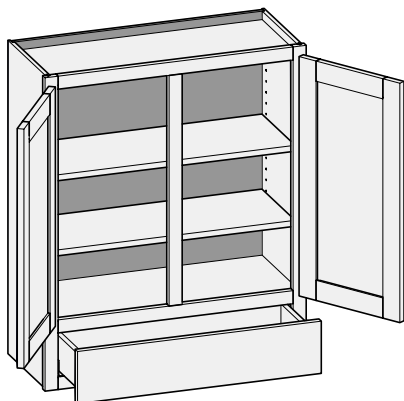
- When height changes, upper opening height changes. Lower opening height fixed at 5".
- 30" – 35" high has one shelf.
- 35-1/16" – 47" high has two shelves.
- 47-1/16" – 59" high has three shelves.
- 69-1/16" – 72" high has four shelves.
- Specify single or butt doors on custom size cabinets 24" wide.
- Unavailable Option: PFD.

**Single Door Cabinets – 12-1/2" Deep**

| 48" High | 54" High | 60" High |
|----------|----------|----------|
| W1D1548  | W1D1554  | W1D1560  |
| W1D1848  | W1D1854  | W1D1860  |
| W1D2148  | W1D2154  | W1D2160  |
| W1D2448  | W1D2454  | W1D2460  |

**Butt Door Cabinets – 12-1/2" Deep**

| 48" High  | 54" High  | 60" High  |
|-----------|-----------|-----------|
| W1D2448BD | W1D2454BD | W1D2460BD |
| W1D2748BD | W1D2754BD | W1D2760BD |
| W1D3048BD | W1D3054BD | W1D3060BD |
| W1D3348BD | W1D3354BD | W1D3360BD |
| W1D3648BD | W1D3654BD | W1D3660BD |

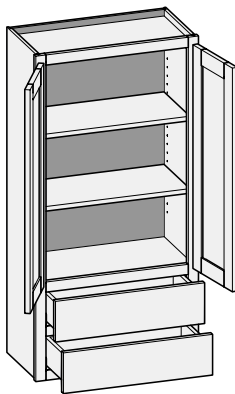
**W1D/CSW1DCS - Wall One Drawer w/Center Stile**


Custom Size Ranges  
 Width: 27" – 36"  
 Height: 30" – 72"  
 Depth: 12", 12-1/2",  
 15", 18", 21", 24"

- When height changes, upper opening height changes. Lower opening height fixed at 5".
- 30" – 35" high has one shelf.
- 35-1/16" – 47" high has two shelves.
- 47-1/16" – 59" high has three shelves.
- 59-1/16" – 72" high has four shelves.
- Unavailable Option: PFD.

| 48" High | 54" High | 60" High |
|----------|----------|----------|
| W1D2748  | W1D2754  | W1D2760  |
| W1D3048  | W1D3054  | W1D3060  |
| W1D3348  | W1D3354  | W1D3360  |
| W1D3648  | W1D3654  | W1D3660  |

## W2D/CSW2D - Wall Two Drawer w/Butt Doors



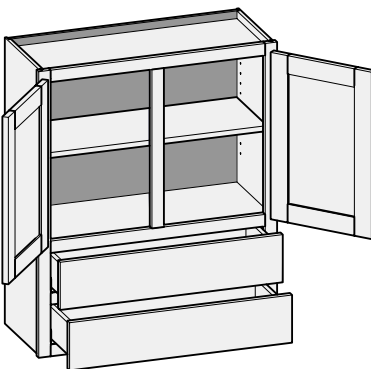
Custom Size Ranges  
Width: 24" – 36"  
Height: 30" – 72"  
Depth: 12", 12-1/2",  
15", 18", 21", 24"

- When height changes, upper opening height changes. Lower opening heights fixed at 5".
- 30" – 41" high has one shelf.
- 41-1/16" – 47" high has two shelves.
- 47-1/16" – 59" high has three shelves.
- 59-1/16" – 72" high has four shelves.
- Specify single or butt doors on custom size cabinets 24" wide.
- Unavailable Option: PFD.

| Single Door Cabinets – 12-1/2" Deep |          |          |
|-------------------------------------|----------|----------|
| 48" High                            | 54" High | 60" High |
| W2D1548                             | W2D1554  | W2D1560  |
| W2D1848                             | W2D1854  | W2D1860  |
| W2D2148                             | W2D2154  | W2D2160  |
| W2D2448                             | W2D2454  | W2D2460  |

| Butt Door Cabinets – 12-1/2" Deep |           |           |
|-----------------------------------|-----------|-----------|
| 48" High                          | 54" High  | 60" High  |
| W2D2448BD                         | W2D2454BD | W2D2460BD |
| W2D2748BD                         | W2D2754BD | W2D2760BD |
| W2D3048BD                         | W2D3054BD | W2D3060BD |
| W2D3348BD                         | W2D3354BD | W2D3360BD |
| W2D3648BD                         | W2D3654BD | W2D3660BD |

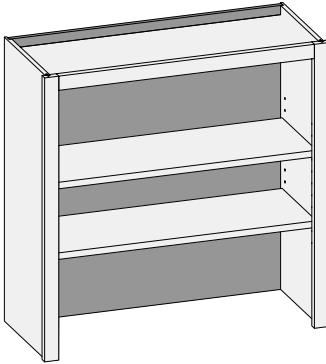
## W2D/CSW2DCS - Wall Two Drawer w/Center Stile



Custom Size Ranges  
Width: 27" – 36"  
Height: 30" – 72"  
Depth: 12", 12-1/2",  
15", 18", 21", 24"

- When cabinet height changes the upper opening changes. Lower opening heights fixed at 5".
- 30" – 41" high has one shelf.
- 41-1/16" – 47" high has two shelves.
- 47-1/16" – 59" high has three shelves.
- 59-1/16" – 72" high has four shelves.
- Unavailable Option: PFD.

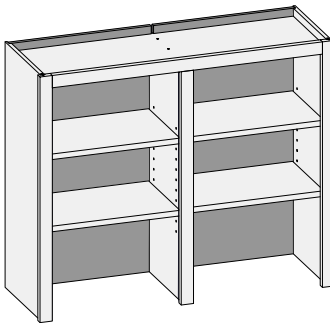
| 48" High | 54" High | 60" High |
|----------|----------|----------|
| W2D2748  | W2D2754  | W2D2760  |
| W2D3048  | W2D3054  | W2D3060  |
| W2D3348  | W2D3354  | W2D3360  |
| W2D3648  | W2D3654  | W2D3660  |

**WOBS/CSWOBS - Wall Open Bookshelf**


Custom Size Ranges  
 Width: 9" – 36"  
 Height: 12" – 96"  
 Depth: 5-1/2" – 27"

- Solid wood shelves not available with matching specie interior option.
- <24" has no shelves.
- 24-1/16" – 35" has one shelf.
- 35-1/16" – 47" high has two shelves.
- 47-1/16" – 59" high has three shelves.
- 59-1/16" – 72" high has four shelves.
- 72-1/16" – 84" high has five shelves.
- 84-1/16" – 96" high has six shelves.

| 12-1/2" Deep |          |          |
|--------------|----------|----------|
| 48" High     | 54" High | 60" High |
| WOBS1548     | WOBS1554 | WOBS1560 |
| WOBS1848     | WOBS1854 | WOBS1860 |
| WOBS2148     | WOBS2154 | WOBS2160 |
| WOBS2448     | WOBS2454 | WOBS2460 |
| WOBS2748     | WOBS2754 | WOBS2760 |
| WOBS3048     | WOBS3054 | WOBS3060 |
| WOBS3348     | WOBS3354 | WOBS3360 |
| WOBS3648     | WOBS3654 | WOBS3660 |

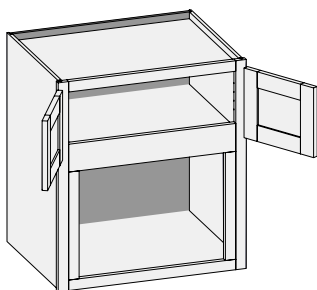
**CSWOBSCS – Wall Open Bookshelf w/Center Stile**


Custom Size Ranges  
 Width: 36" – 72"  
 Height: 12" – 96"  
 Depth: 5-1/2" – 27"

- Fixed vertical partition with independently adjustable shelves.
- Solid wood shelves not available with matching specie interior option.
- <24" has no shelves.
- 24-1/6" – 35" high has two shelves.
- 35-1/16" – 47" high has four shelves.
- 47-1/16" – 59" high has six shelves.
- 59-1/16" – 72" high has eight shelves.
- 72-1/16" – 84" high has ten shelves.
- 84-1/16" – 96" high has twelve shelves.

**Wall Options Key:** EXP = Exposed End(s) FL = Flush End(s) FUE = Flush Unexposed End(s) PFD = Prep for False Door EXT = Extended Stile(s)  
 OS = Omit Shelving NSH = No Shelf Holes WS = Solid Wood Shelves MI = Matching Interior NB = Natural Finished Bottom

## CSWMB - Wall Microwave Built-in w/Butt Doors

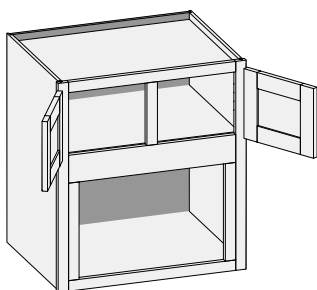


4" Middle Rail

Custom Size Ranges  
Width: 24" – 36"  
Height: 30" – 72"  
Depth: 18" – 27"

- Bottom opening height 14" on 30" – 35-15/16" height, 15-1/2" on all other heights. Trimmable to midrail, increase opening height by 2-1/2".
- Bottom opening width 6" less than cabinet width. Trimmable to 3".
- 30" – 42" high has no shelves.
- 42-1/16" – 54" high has one shelf.
- 54-1/16" – 66" high has two shelves.
- 66-1/16" – 72" high has three shelves.
- Unavailable option: WS.

## CSWMBCS - Wall Microwave Built-in w/Center Stile

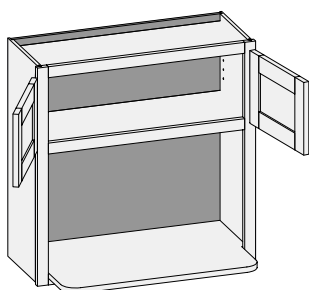


Middle Rail

Custom Size Ranges  
Width: 27" – 36"  
Height: 30" – 72"  
Depth: 18" – 27"

- Bottom opening height 14" on 30" – 35-15/16" height; 15-1/2" on all others. Trimmable to midrail, increase opening height to 2-1/2".
- Bottom opening width 6" less than cabinet width. Trimmable to 3" less than cabinet width.
- 30" – 42" high has no shelves.
- 42-1/5" – 54" high has one shelf.
- 54-1/16" – 66" high has two shelves.
- 66-1/16" – 72" high has three shelves.
- Unavailable option: WS.

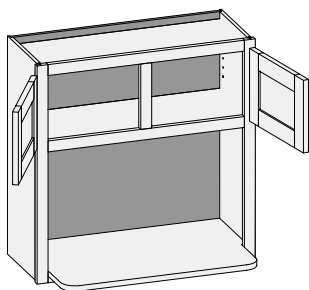
## CSWMWS - Wall Microwave with Shelf w/Butt Doors



Custom Size Ranges  
Width: 24" – 36"  
Height: 30" – 72"  
Depth: 5-1/2" – 27"

- 18" deep matching specie plywood microwave shelf.
- Soft Maple uses Hard Maple plywood shelf.
- When height changes, upper opening height changes. Lower opening height fixed at 16-1/2".
- Edge of lower shelf is plywood banded with matching specie veneer.
- 30" – 42" high has no shelves.
- 42-1/6" – 54" high has one shelf.
- 54-1/16" – 66" high has two shelves.
- 66-1/16" – 72" high has three shelves.
- Unavailable options: PFD and WS.

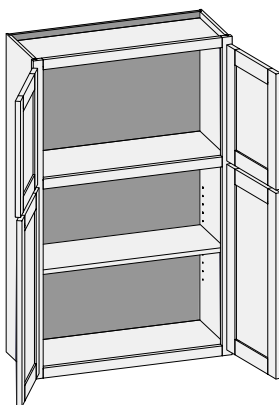
## CSWMWCS - Wall Microwave with Shelf w/Center Stile



Custom Size Ranges  
Width: 27" – 36"  
Height: 30" – 72"  
Depth: 5-1/2" – 27"

- 18" deep matching specie plywood microwave shelf.
- Soft Maple uses Hard Maple plywood shelf.
- When height changes, upper opening height changes. Lower opening height fixed at 16-1/2".
- Edge of lower shelf is plywood banded with matching specie veneer.
- 30" – 42" high no shelves.
- 42-1/16" – 54" high has one shelf.
- 54-1/16" – 66" high has two shelves.
- 66-1/16" – 72" high has three shelves.
- Unavailable options: PFD and WS.

**Wall Options Key:** EXP = Exposed End(s) FL = Flush End(s) FUE = Flush Unexposed End(s) PFD = Prep for False Door EXT = Extended Stile(s)  
OS = Omit Shelving NSH = No Shelf Holes WS = Solid Wood Shelves MI = Matching Interior NB = Natural Finished Bottom

**TTW/CSTTW - Two Tiered Wall**


Custom Size Ranges  
 Single Door Width: 9" – 24"  
 Butt Door Width: 24" – 36"  
 Height: 48" – 72"  
 Depth: 5-1/2" – 27"

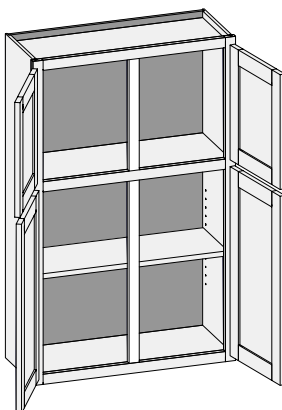
- When height changes, lower opening height changes.
  - ♦ Upper opening height fixed at 16-1/2" with inset, 1/4" and 1/2" overlay.
  - ♦ Upper opening height fixed at 16" with 1-1/4" and 1-3/8" overlay.
- Lower section designed to align with adjacent wall cabinets. Add 18" to adjacent cabinet to determine TTW cabinet height.
- 48" – 60" high has two shelves.
- 60-1/16" – 72" high has three shelves.
- Specify single or butt doors on custom size cabinets 24" wide.

**Single Door Cabinets – 12-1/2" Deep**  
**48" High**

|         |         |
|---------|---------|
| TTW1248 | TTW2148 |
| TTW1548 | TTW2448 |
| TTW1848 |         |

**Butt Door Cabinets – 12-1/2" Deep**  
**48" High**

|           |           |
|-----------|-----------|
| TTW2448BD | TTW3348BD |
| TTW2748BD | TTW3648BD |
| TTW3048BD |           |

**TTW/CSTTWCS - Two Tiered Wall w/Center Stile**


Custom Size Ranges  
 Width: 27" – 36"  
 Height: 48" – 72"  
 Depth: 5-1/2" – 27"

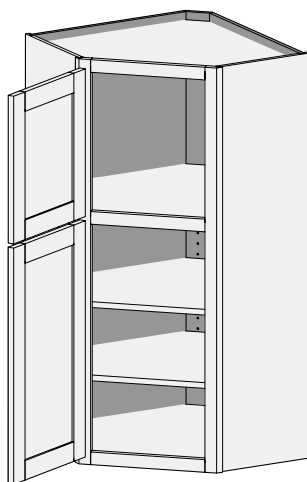
- When height changes, lower opening height changes.
  - ♦ Upper opening height fixed at 16-1/2" with inset, 1/4" and 1/2" overlay.
  - ♦ Upper opening height fixed at 16" with 1-1/4" and 1-3/8" overlay.
- Lower section designed to align with adjacent wall cabinets. Add 18" to adjacent cabinet to determine TTW cabinet height.
- 48" – 60" high has two shelves.
- 60-1/16" – 72" high has three shelves.

**12-1/2" Deep**  
**48" High**

|         |         |
|---------|---------|
| TTW2748 | TTW3948 |
| TTW3048 | TTW4248 |
| TTW3348 | TTW4548 |
| TTW3648 | TTW4848 |

**Wall Options Key:** EXP = Exposed End(s) FL = Flush End(s) FUE = Flush Unexposed End(s) PFD = Prep for False Door EXT = Extended Stile(s)  
 OS = Omit Shelving NSH = No Shelf Holes WS = Solid Wood Shelves MI = Matching Interior NB = Natural Finished Bottom

## TTWCSE/CSTTWSE - Two Tiered Wall Corner Single Entry



16-1/4" Face  
17-3/8" Frame  
Width

Custom Size Ranges  
Width: 24", 27"  
Height: 48" – 72"  
Depth: 24", 27"

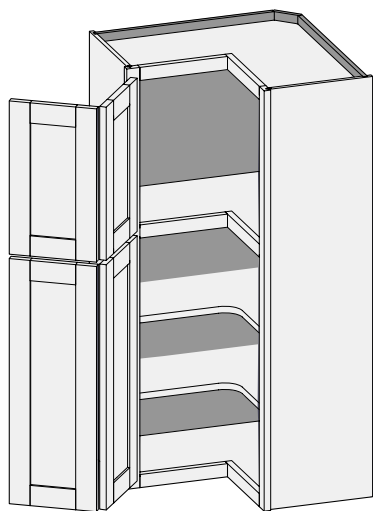
### 48" High

TTWCSE2448

TTWCSE2748

- When height changes, lower opening height changes.
  - ♦ Upper opening height fixed at 16-1/2" with inset, 1/4" and 1/2" overlay.
  - ♦ Upper opening height fixed at 16" with 1-1/4" and 1-3/8" overlay.
- TTWCSE24 units have 12-1/2" deep sides.
- TTWCSE27 units have 15-1/2" deep sides.
- Susan option is not available.
- When ordered in 1-1/4" and 1-3/8" overlay applications (with or without hinges), cabinets will have their doors sized as 1/2" overlay in width only to ensure adequate clearance.
- Lower section designed to align with adjacent wall cabinets. Add 18" to adjacent cabinet to determine TTW cabinet height.
- 48" – 60" high has two shelves.
- 60-1/16" – 72" high has three shelves.
- Unavailable options: EXT and PFD.

## TTWCP/CSTTWCP - Two Tiered Wall Corner Pie Cut



Custom Size Ranges  
Width: 24", 27"  
Height: 48" – 72"  
Depth: 24", 27"

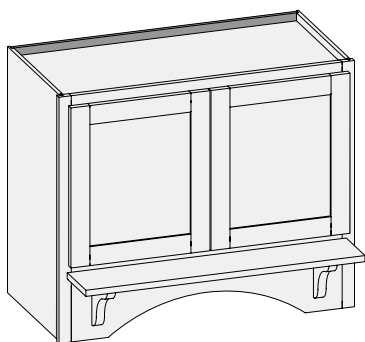
### 48" High

TTWCP2448

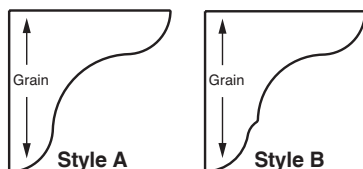
TTWCP2748

- When height changes, lower opening height changes.
  - ♦ Upper opening height fixed at 16-1/2" with inset, 1/4" and 1/2" overlay.
  - ♦ Upper opening height fixed at 16" with 1-1/4" and 1-3/8" overlay.
- TTWCP24 units have 12-1/2" deep sides.
- TTWCP27 units have 15-1/2" deep sides.
- Susan option is not available.
- When hinges are ordered in 1-1/4" and 1-3/8" overlay applications, cabinets will have their doors sized as 1/2" overlay in width only.
- If hinges are not specified, 1-1/4" and 1-3/8" overlay sizing rules apply. These overlays require adequate clearance for door functionality between corner and adjacent cabinets. Use filler or extended stiles accordingly.
- Lower section designed to align with adjacent wall cabinets. Add 18" to adjacent cabinet to determine TTW cabinet height.
- 48" – 60" high has two shelves.
- 60-1/16" – 72" high has three shelves.

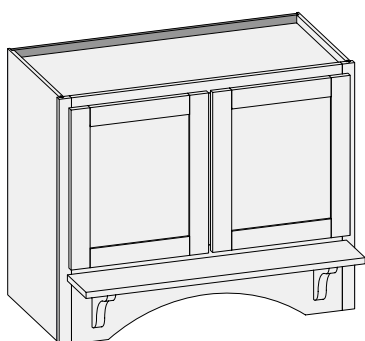


**CSRH - Range Hood w/Butt Doors**

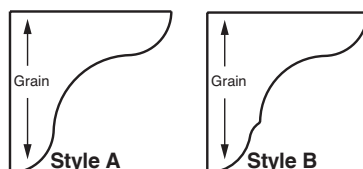
Custom Size Ranges  
 Width: 30" – 36"  
 Height: 24" – 48"  
 Depth: 18" – 21"



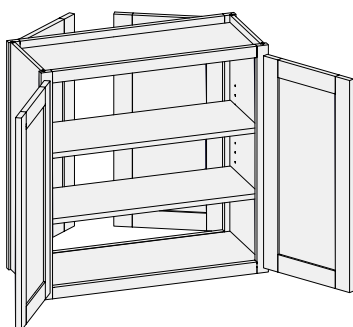
- Operable doors allow access to ventilation unit.
- Ventilators available through Stanisci Design. Phone Number: 248-572-6880.
- Roman Arch bottom rail standard - no options.
- Available with two bracket designs: Style A or B.
- Brackets are 1" thick, 6" high and 6" deep.
- Solid mantle shelf is 3/4" thick and 6-1/4" deep. Specify desired edge profile.
- Mantle shelf kit options (specify one):
  - Kit A - 2 Style A brackets and wood shelf
  - Kit B - 2 Style B brackets and wood shelf
  - Mantle shelf only
  - Style A only (pair)
  - Style B only (pair)
- Mantles and brackets not available on 24" – 29-15/16" high.

**CSRHCS - Range Hood w/Center Stile**

Custom Size Ranges  
 Width: 36" – 48"  
 Height: 24" – 48"  
 Depth: 18" – 21"



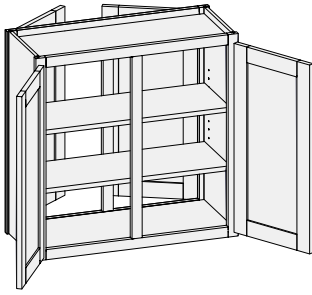
- Operable doors allow access to ventilation unit.
- Ventilators available through Stanisci Design. Phone Number: 248-572-6880.
- Roman Arch bottom rail standard - no options.
- Available with two bracket designs: Style A or B.
- Brackets are 1" thick, 6" high and 6" deep.
- Solid mantle shelf is 3/4" thick and 6-1/4" deep. Specify desired edge profile.
- Mantle shelf kit options (specify one):
  - Kit A - 2 Style A brackets and wood shelf
  - Kit B - 2 Style B brackets and wood shelf
  - Mantle shelf only
  - Style A only (pair)
  - Style B only (pair)
- Mantles and brackets not available on 24" – 29-15/16" high.

**CSWDE - Wall Double Entry w/Butt Doors**

Custom Size Ranges  
 Single Door Width: 9" – 24"  
 Butt Door Width: 24" – 36"  
 Height: 12" – 72"  
 Depth: 12" – 27"

- 12" – 18" high has no shelves.
- 18-1/16" – 24" high has one shelf.
- 24-1/16" – 36" high has two shelves.
- 36-1/16" – 48" high has three shelves.
- 48-1/16" – 60" high has four shelves.
- 60-1/16" – 72" high has five shelves.
- Specify single or butt doors on custom size cabinets 24" wide.
- Unavailable options: PFD and WS.

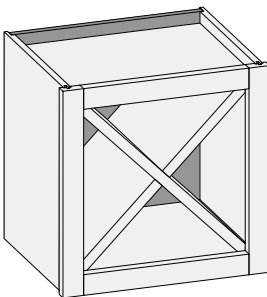
## WDE/CSWDECS - Wall Double Entry w/Center Stile



Custom Size Ranges  
Width: 27" – 48"  
Height: 12" – 72"  
Depth: 12" – 27"

- 12" – 18" high has no shelves.
- 18-1/16" – 24" high has one shelf.
- 24-1/16" – 36" high has two shelves.
- 36-1/16" – 48" high has three shelves.
- 48-1/16" – 60" high has four shelves.
- 60-1/16" – 72" high has five shelves.
- Unavailable options: PFD and WS.

## WXC/CSWXC - Wall X Cube Cabinet

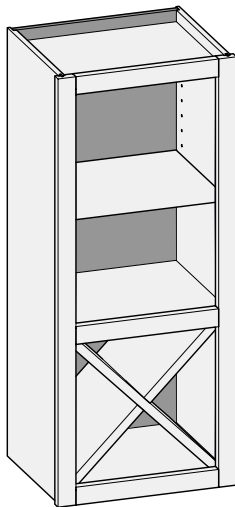


Custom Size Ranges  
Width: 12", 15", 18"  
Height: 12", 15", 18"  
Depth: 5-1/2" – 15-1/2"

- "X" insert constructed from 3/4" matching specie plywood.
- When ordering custom size cabinets, width and height must be equal.
- Top and bottom rails extend into the opening 1/8" to conceal ends of "X" insert after installation.

| 12-1/2" Deep |          |          |
|--------------|----------|----------|
| 12" High     | 15" High | 18" High |
| WXC1212      | WXC1515  | WXC1818  |

## W1X/CSW1X - Wall One Door X Cube Cabinet

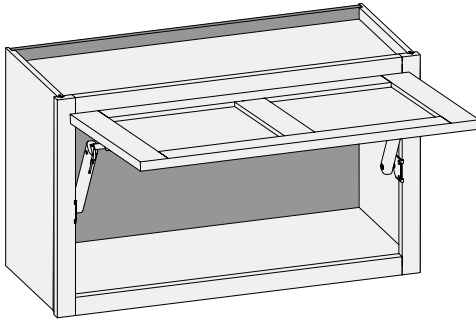


Custom Size Ranges  
Width: 12", 15", 18"  
Height: 30" – 72"  
Depth: 5-1/2" – 15-1/2"

- When height changes, upper section increases.
- Lower section height is equal to the cabinet width to maintain "X" insert sizing.
- "X" insert constructed from 3/4" matching specie plywood.
- Top and bottom rails in lower section extend into the opening 1/8" to conceal ends of "X" insert after installation.
- See BOM app on Customer Business Portal for shelf quantity.

| 30" High | 33" High | 36" High | 42" High | 45" High | 48" High | 51" High | 54" High | 57" High | 60" High |
|----------|----------|----------|----------|----------|----------|----------|----------|----------|----------|
| W1X1230  | W1X1233  | W1X1236  | W1X1242  | W1X1245  | W1X1248  | W1X1251  | W1X1254  | W1X1257  | W1X1260  |
| W1X1530  | W1X1533  | W1X1536  | W1X1542  | W1X1545  | W1X1548  | W1X1551  | W1X1554  | W1X1557  | W1X1560  |
| W1X1830  | W1X1833  | W1X1836  | W1X1842  | W1X1845  | W1X1848  | W1X1851  | W1X1854  | W1X1857  | W1X1860  |

**Wall Options Key:** EXP = Exposed End(s) FL = Flush End(s) FUE = Flush Unexposed End(s) PFD = Prep for False Door EXT = Extended Stile(s)  
OS = Omit Shelving NSH = No Shelf Holes WS = Solid Wood Shelves MI = Matching Interior NB = Natural Finished Bottom

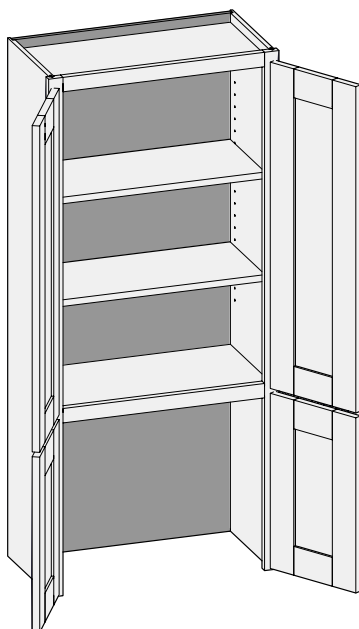
**WHKXS/CSWHKXS - Wall w/HK-XS Lift System**


Custom Size Ranges  
 Width: 15" – 36"  
 Height: 12" – 24"  
 Depth: 6-1/2" – 27"

- Preconfigured units include Blum HK-XS Series lift system hardware and Blum COMPACT hinges.
- Door weight and design determine the strength and quantity of lift mechanisms provided.
- Cabinet width 15" – 24" are single panel door designs. 24-1/16" – 36" are two panels side by side door designs. Upcharges for 2 panel door apply.
- Rabbeted edge profiles and inset/prefit options are not available.
- 12" – 18" high has no shelves.
- 18-1/16" – 24" high has one shelf.

| 12" High  | 15" High  | 18" High  | 21" High  | 24" High  |
|-----------|-----------|-----------|-----------|-----------|
| WHKXS1512 | WHKXS1515 | WHKXS1518 | WHKXS1521 | WHKXS1524 |
| WHKXS1812 | WHKXS1815 | WHKXS1818 | WHKXS1821 | WHKXS1824 |
| WHKXS2112 | WHKXS2115 | WHKXS2118 | WHKXS2121 | WHKXS2124 |
| WHKXS2412 | WHKXS2415 | WHKXS2418 | WHKXS2421 | WHKXS2424 |
| WHKXS2712 | WHKXS2715 | WHKXS2718 | WHKXS2721 | WHKXS2724 |
| WHKXS3012 | WHKXS3015 | WHKXS3018 | WHKXS3021 | WHKXS3024 |
| WHKXS3312 | WHKXS3315 | WHKXS3318 | WHKXS3321 | WHKXS3324 |
| WHKXS3612 | WHKXS3615 | WHKXS3618 | WHKXS3621 | WHKXS3624 |

## CSWAC - Custom Size Wall Appliance Cabinet

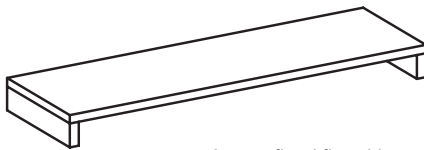
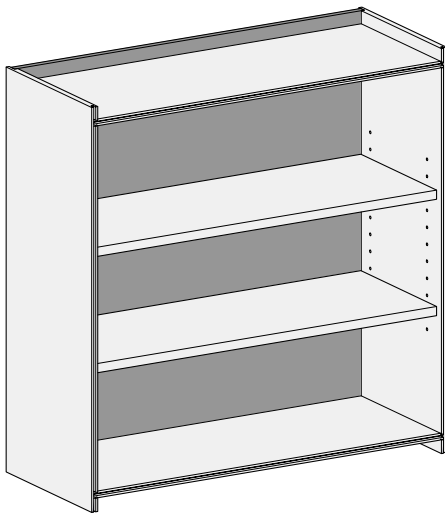


Custom Size Ranges  
Single Door Width: 12" – 24"  
Butt Door Width: 24" – 36"  
Height: 48" – 96"  
Depth: 5-1/2" – 30"  
Top Cab Height - 6" - 90"

- When ordering CSWAC specify the desired top cabinet height. On 1-1/4" & 1-3/8" overlay applications, CWS will adjust the front frame midrail location to ensure doors align with adjacent wall cabinet doors.
- Be sure to account for the countertop thickness when specifying overall cabinet height to ensure doors align properly.
- When ordering loose parts for this cabinet, use the BOM and specify the desired overlay to ensure the correct parts are ordered.
- Specify single or butt doors on custom size cabinets 24" wide.
- Shelf quantity is calculated for each opening height.
- Height <18" high has no shelves.
- Height 18" – 24" high has one shelf.
- Height 24-1/16" - 36" high has two shelves.
- Height 36-1/16" – 48" high has three shelves.
- Height 48-1/16" – 60" high has four shelves.
- Height 60-1/16" – 72" high has five shelves.
- Height 72-1/16" – 84" high has six shelves.
- Height >84" high has seven shelves.

## CSWCO - Wall Case Only

Custom Size Ranges  
Width: 9" – 48"  
Height: 12" – 120"  
Depth: 5-1/2" – 30"



Loose fixed floor kits

- Customizable cabinet case for custom Wall and Tall applications.
- No front frame included – case only. Order custom size front frame and doors.
- Sides are machined with shelf holes.
- Loose fixed floor kits are sized to fit between sides. Plywood cleats included to mount floors as needed behind front frame openings. Floors include pre-inserted splines.
- Matching specie interior is not available over 96" high. White Birch UV topcoated material will be used.
- Custom quantities of fixed floor kits are available. Specify the quantity per cabinet.
- 12" – 18" high has no shelves.
- 18-1/16" – 24" high has one shelf.
- 24-1/16" – 36" high has two shelves.
- 36-1/16" – 48" high has three shelves.
- 48-1/16" – 60" high has four shelves.
- 60-1/16" – 72" high has five shelves.
- 72-1/16" – 84" high has six shelves.
- 84-1/16" – 96" high has seven shelves.
- 96-1/16" – 108" high has eight shelves.
- 108-1/16" – 120" high has nine shelves.
- Use Conestoga's online ordering system, Con-Nex or contact Customer Service for pricing of Case Only.