

## Advantage Base Cabinet Standard Features and Options

The information described below discusses some of the features and options of Advantage Base cabinets. Customers have the option to omit these standard features as well as add other design options, which can be quickly referenced at the bottom of each page in the Base Cabinet Section labeled “Base Options Key”. For more detailed descriptions and images of all available options see Options, Section 12 within this manual. The options described below are available on all Base cabinets unless specifically noted next to the individual cabinet as **Unavailable Options**.

**Standard Shelving & Omit Shelving (OS)** – 3/4” thick White Birch plywood shelving with a durable UV topcoat is standard with any Base cabinet with shelves. If shelving is not desired within a specific cabinet, indicate **Omit Shelving** when ordering.

**5mm Shelf Holes & No Shelf Holes (NSH)** – Pre-drilled 5mm shelf holes on 32mm centers are a standard feature of all Base cabinets with shelves. If shelf holes are not desired, indicate **No Shelf Holes** when ordering. **Note:** If shelving and shelf holes are not desired, both No Shelf Holes and Omit Shelving must be specified when ordering.

**Cabinet Case Material Options** – Most optional cabinet case materials will match the door, drawer front and face frame specie and are available with Base cabinets produced in standard Advantage species.

- **Exposed Ends (EXP)** – Matching specie veneer on the exterior face of 1/2” thick plywood cabinet sides. The interior of plywood Exposed Ends will remain as White Birch.
- **Flush Ends (FL)** – Matching specie veneer on the exterior face of 3/4” thick plywood cabinet sides. The interior of plywood Flush Ends will remain as White Birch.
- **Flush Unexposed Ends (FUE)** – Natural Birch veneer on the exterior face of the 3/4” thick flush plywood cabinet sides. Designed to be utilized when extra support is desired from non-exposed flush end panels. The interior of the plywood Flush Unexposed Ends will remain as White Birch.
- **Matching Interior (MI)** – Matching specie veneer is available on all internal cabinet parts. The Matching Interior Option is not available in combination with the Solid Wood Shelf Upgrade Option.

**Solid Wood Shelf Upgrade (WS)** – The **Solid Wood Shelf Upgrade Option** replaces the standard White Birch plywood shelving with solid wood Natural Birch shelving. Solid Wood Shelving is 3/4” thick with a bullnosed front edge and finished with a UV topcoat. The Solid Wood Shelf Upgrade Option is not available in combination with the Matching Interior Option or when Base cabinets are deeper than 24”. Solid shelving available up to 18” deep.

**Dust Top (DT)** – The **Dust Top Option** replaces the front and back strips at the top of the Base cabinet with a 1/2” thick full depth Birch plywood top. The Dust Top is machined on the left and right sides to slide into the grooves near the top of the side panels, offering additional stability to the cabinet.

**Extended Stiles (EXT)** – The **Extended Stile Option** provides additional width on the left, right or both stiles of the front frame. Up to 3” of additional material provides clearance between the cabinet and adjacent walls or other cabinetry allowing cabinet doors and drawers to fully open without interference. Extended stiles also provide the opportunity to scribe the frame to the wall contours during the installation process.

**Leg Extension (LE)** – the **Leg Extension Option** can be added to the left, right or both stiles of the front frame. When selected, the Leg Extension Option omits the toe kick from the cabinet and extends the front frame stile(s) to the floor creating a closed end panel to the cabinet.

**Prep for False Door Side (PFD)** – The **Prep for False Door Side Option** maintains the overall front frame width ordered, but relocates the cabinet side panel, moving it inward by 13/16” for each Prep for False Door Side selected. This creates a 3/4” reveal behind the 1-1/2” wide front frame stile to accommodate the decorative door end panel. The Prep for False Door Side Option can be ordered for the left, right or both cabinet sides. All cabinet components are automatically resized accordingly when the Prep for False Door Side Option is selected.

**Square Toe Kick Notch (STN)** – Standard Base cabinet side panels have a 3-1/2” deep x 4” high toe kick notch with a 1/4” radius at the intersecting corner. This corner can be squared with the **Square Toe Notch Option** which makes the corner notch 90° to aid in toe board installation.

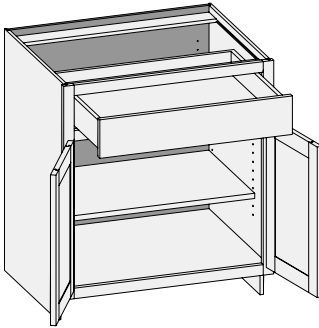
**Flush Toe (FT)** – When selected, the **Flush Toe Option** replaces the standard toe kick notch in both side panels with a 5-1/2” bottom rail on the front frame.

**Shaped Bottom Rail (SBR)** – The **Shaped Bottom Rail Option** automatically adds the Flush Toe to the cabinet’s front frame. The 5-1/2” wide bottom rail gives customers the choice of 6 decorative shapes on the bottom rail of the Flush Toe, providing a furniture type appearance.

**Shaped Side (SS)** – The **Shaped Side Option** provides a choice of 4 decorative shapes on the bottom of Exposed Ends or Flush Ends. Shaped Sides are available on left, right or both sides, but is not available in combination with Extended Stiles, Flushed Unexposed Ends or Loose Toe Platform.

**Toe Space Side (TSS)** – The **Toe Space Side Option** replaces the bottom 4” of the side panel with a recessed toe space on the left, right or both sides of most Base cabinetry. This option is commonly used on island or peninsula cabinet sides.

## B/CSB - Base

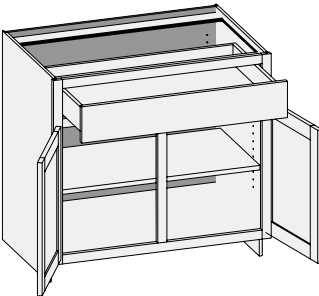


Custom Size Ranges  
 Single Door Width: 12" – 24"  
 Butt Door Width: 24" – 36"  
 Height: 31-1/2" – 42"  
 Depth: 12", 15", 18", 21", 24",  
 27", 30"

- When height changes, lower opening height changes. Drawer opening height fixed at 5".
- Specify single or butt doors on custom size cabinets 24" wide.

24" Deep			
Single Door Cabinets		Butt Door Cabinets	
B1234.5	B2134.5	B2434.5BD	B3334.5BD
B1534.5	B2434.5	B2734.5BD	B3634.5BD
B1834.5		B3034.5BD	

## B/CSB2D1D - Base Two Door One Drawer

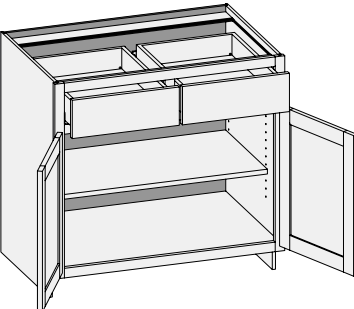


Custom Size Ranges  
 Width: 27" – 36"  
 Height: 31-1/2" – 42"  
 Depth: 12", 15", 18", 21", 24",  
 27", 30"

- When height changes, lower opening height changes. Drawer opening height fixed at 5".

24" Deep
B2734.5

## B/CSBBD2D - Base Butt Door Two Drawer

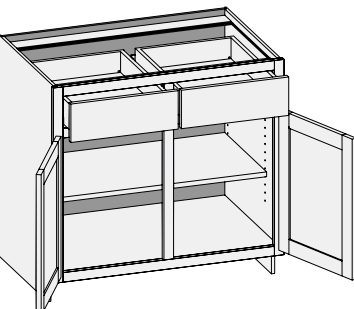


Custom Size Ranges  
 Width: 30" – 36"  
 Height: 31-1/2" – 42"  
 Depth: 12", 15", 18", 21", 24",  
 27", 30"

- When height changes, lower opening height changes. Drawer opening height fixed at 5".

24" Deep
B3034.5BD2D
B3334.5BD2D
B3634.5BD2D

## B/CSB2D2D - Base Two Door Two Drawer



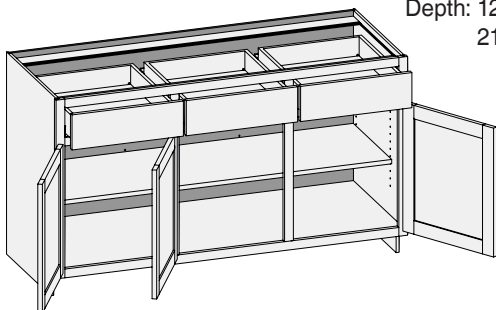
Custom Size Ranges  
 Width: 30" – 48"  
 Height: 31-1/2" – 42"  
 Depth: 12", 15", 18", 21", 24",  
 27", 30"

- When height changes, lower opening height changes. Drawer opening height fixed at 5".

24" Deep	
B3034.5	B4234.5
B3334.5	B4534.5
B3634.5	B4834.5
B3934.5	

**Base Options Key:** EXP = Exposed End(s) FL = Flush End(s) FUE = Flush Unexposed End(s) SS = Shaped Side PFD = Prep for False Door  
 EXT = Extended Stile(s) FT = Flush Toe SBR = Shaped Bottom Rail LE = Leg Extension TSS = Toe Space Side OS = Omit Shelving  
 NSH = No Shelf Holes WS = Solid Wood Shelves MI = Matching Interior DT = Dust Top PTB = Plywood Toe Backer

## B/CSB3D3D - Base Three Door Three Drawer

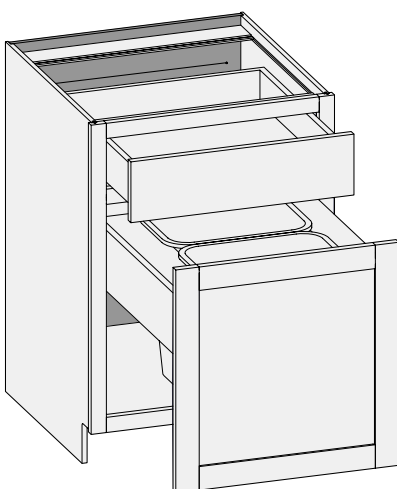


Custom Size Ranges  
Width: 48" – 72"  
Height: 31-1/2" – 42"  
Depth: 12", 15", 18",  
21", 24", 27", 30"

- Additional shelf holes are provided on cabinet back to support wide shelves.
- Doors hinged on center stile require 1/2" overlay hinges for 1-1/4" or 1-3/8" overlay.
- When height changes, lower opening height changes. Drawer opening height fixed at 5".
- Unavailable Option: WS.

24" Deep	
B5134.5	B6334.5
B5434.5	B6634.5
B5734.5	B6934.5
B6034.5	B7234.5

## BTCP/CSBTCP - Base w/Trash Can Pull-Out

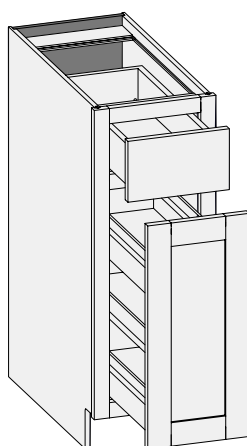


Custom Size Ranges  
Width: 18" – 27"  
Height: 31-1/2" – 34-1/2"  
Depth: 24"

- Cabinet depth is 24". Depth customization is not available due to Trash Can Pull-Out and hardware requirements.
- Trash Can Pull-Out unit is prefinished Natural Birch with a Hard Maple plywood top.
- Single can, double cans or units with no cut-outs are available.
- Pull-out unit is 6" high to accommodate door mounting.
- Units include 28 quart grey waste cans.
- Units 18" – 23-15/16" have one can; units 24" – 27" includes 2 cans. When ordering custom size cabinets within these ranges specify single can, double cans or no cut-outs.
- When cabinet height changes, lower opening height changes. Drawer opening height fixed at 5".
- Not available in inset applications.
- Unavailable Option: PFD.

24" Deep	
BTCP1834.5	BTCP2434.5
BTCP2134.5	BTCP2734.5

## BPO/CSBPO Base Pull Out



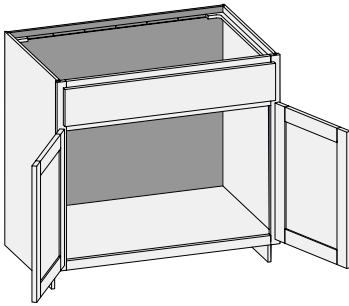
Custom Size Ranges  
Width: 9" and 12"  
Height: 34-1/2"  
Depth: 24"

- Cabinet depth is 24". Depth customization is not available due to pull-out and hardware requirements.
- Unit includes a fully assembled pull-out unit with full extension drawer slides and a mounting cleat for quick and easy installation.
- Pull-out is constructed from Natural Birch solids and plywood finished with a durable, clear UV topcoat and includes two fixed shelves and one adjustable shelf.
- Integrated 6-way adjustable door mounting hardware allows for easy installation for all overlays.
- Unavailable Option: SBR.

24" Deep	
BPO0934.5	BPO1234.5

**Base Options Key:** EXP = Exposed End(s) FL = Flush End(s) FUE = Flush Unexposed End(s) SS = Shaped Side PFD = Prep for False Door  
EXT = Extended Stile(s) FT = Flush Toe SBR = Shaped Bottom Rail LE = Leg Extension TSS = Toe Space Side OS = Omit Shelving  
NSH = No Shelf Holes WS = Solid Wood Shelves MI = Matching Interior DT = Dust Top PTB = Plywood Toe Backer

### BS/CSBS - Base Sink w/Butt Doors

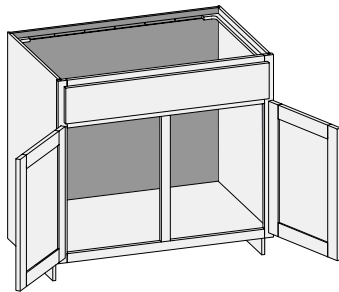


Custom Size Ranges  
 Width: 24" – 36"  
 Height: 31-1/2" – 42"  
 Depth: 18" – 30"

- False drawer front.
- When height changes, lower opening height changes. Drawer opening height fixed at 5".
- Specify single or butt doors on custom size cabinets 24" wide.

24" Deep	
BS2434.5BD	BS3334.5BD
BS2734.5BD	BS3634.5BD
BS3034.5BD	

### BS/CSBS2D1D - Base Sink Two Door One Drawer

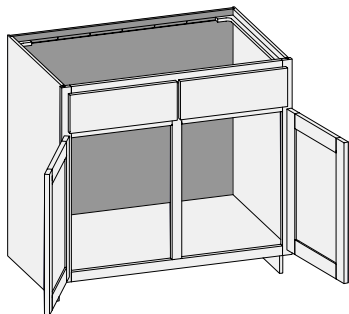


Custom Size Ranges  
 Width: 27" – 36"  
 Height: 31-1/2" – 42"  
 Depth: 18" – 30"

- False drawer front.
- When height changes, lower opening height changes. Drawer opening height fixed at 5".

24" Deep
BS2734.5

### BS/CSBS2D2D - Base Sink Two Door Two Drawer



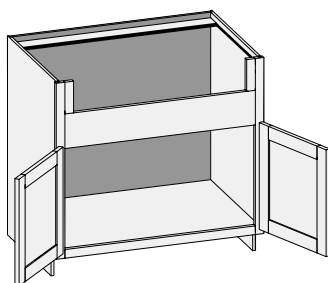
Custom Size Ranges  
 Width: 30" – 48"  
 Height: 31-1/2" – 42"  
 Depth: 18" – 30"

- Two false drawer fronts.
- When height changes, lower opening height changes. Drawer opening height fixed at 5".

24" Deep	
BS3034.5	BS4234.5
BS3334.5	BS4534.5
BS3634.5	BS4834.5
BS3934.5	

**Base Options Key:** EXP = Exposed End(s) FL = Flush End(s) FUE = Flush Unexposed End(s) SS = Shaped Side PFD = Prep for False Door  
 EXT = Extended Stile(s) FT = Flush Toe SBR = Shaped Bottom Rail LE = Leg Extension TSS = Toe Space Side OS = Omit Shelving  
 NSH = No Shelf Holes WS = Solid Wood Shelves MI = Matching Interior DT = Dust Top PTB = Plywood Toe Backer

## ASB/CSASB - Apron Sink Base w/Butt Doors



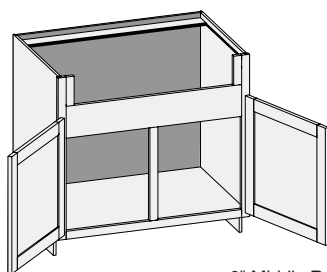
6" Middle Rail

Custom Size Ranges  
Width: 24" – 36"  
Height: 31-1/2" – 42"  
Depth: 18" – 30"

- Sink bowl opening is 5-1/2" high, width is 6" less than cabinet width.
- Sink opening is trimmable to 4-1/2" in height and 3" in width.
- When height changes, lower opening height changes.
- Specify single or butt doors on custom size cabinets 24" wide.

24" Deep	
ASB2434.5BD	ASB3334.5BD
ASB2734.5BD	ASB3634.5BD
ASB3034.5BD	

## ASB/CSASBCS - Apron Sink Base w/Center Stile



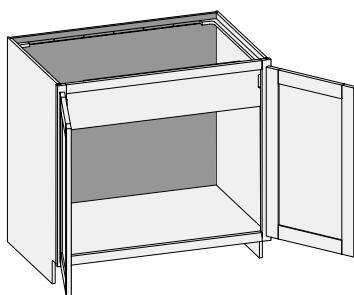
6" Middle Rail

Custom Size Ranges  
Width: 27" – 48"  
Height: 31-1/2" – 42"  
Depth: 18" – 30"

- Sink bowl opening is 5-1/2" high, width is 6" less than cabinet width.
- Sink opening is trimmable to 4-1/2" in height and 3" in width.
- When height changes, lower opening height changes.

24" Deep	
ASB2734.5	ASB3934.5
ASB3034.5	ASB4234.5
ASB3334.5	ASB4534.5
ASB3634.5	ASB4834.5

## BSFD/CSBSFD - Base Sink Full Door w/Butt Doors

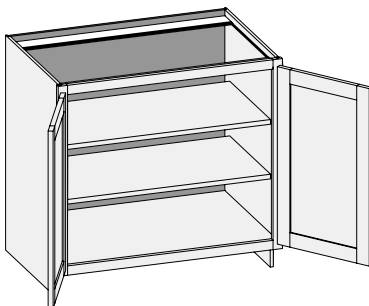


Custom Size Ranges  
Width: 24" – 36"  
Height: 31-1/2" – 34-1/2"  
Depth: 18" – 30"

- 6-3/4" high apron conceals sink bowl, accommodates hinges and matches cabinet interior.
- Specify single or butt doors on custom size cabinets 24" wide.

24" Deep	
BSFD2434.5BD	BSFD3334.5BD
BSFD2734.5BD	BSFD3634.5BD
BSFD3034.5BD	

**Base Options Key:** EXP = Exposed End(s) FL = Flush End(s) FUE = Flush Unexposed End(s) SS = Shaped Side PFD = Prep for False Door  
EXT = Extended Stile(s) FT = Flush Toe SBR = Shaped Bottom Rail LE = Leg Extension TSS = Toe Space Side OS = Omit Shelving  
NSH = No Shelf Holes WS = Solid Wood Shelves MI = Matching Interior DT = Dust Top PTB = Plywood Toe Backer

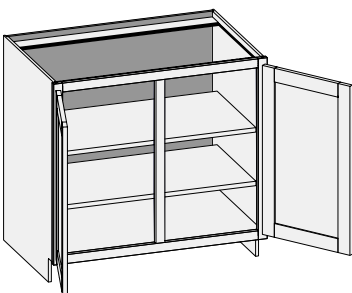
**BFD/CSBFD - Base Full Door**


Custom Size Ranges  
 Single Door Width: 9" – 24"  
 Butt Door Width: 24" – 36"  
 Height: 10" – 48"  
 Depth: 5-1/2" – 30"

- BFD0934.5 does not include shelves.
- 10" – 22" high has no shelves.
- 22-1/16" – 28" high has one shelf.
- 28-1/16" – 40" high has two shelves.
- 40-1/16" – 48" high has three shelves.
- Specify single or butt doors on custom size cabinets 24" wide.

Single Door Cabinets – 24" Deep		Butt Door Cabinets – 24" Deep	
BFD0934.5	BFD1834.5	BFD2434.5BD	BFD3334.5BD
BFD1234.5	BFD2134.5	BFD2734.5BD	BFD3634.5BD
BFD1534.5	BFD2434.5	BFD3034.5BD	

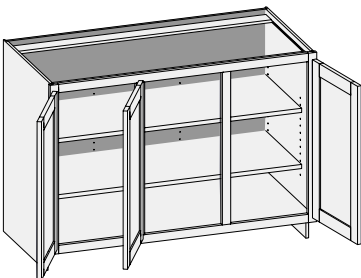
Single Door Cabinets – 12-1/2" Deep		Butt Door Cabinets – 12-1/2" Deep	
BWD1234.5	BWD2134.5	BWD2434.5BD	BWD3334.5BD
BWD1534.5	BWD2434.5	BWD2734.5BD	BWD3634.5BD
BWD1834.5		BWD3034.5BD	

**BFD/CSBFDCS - Base Full Door w/Center Stile**


Custom Size Ranges  
 Width: 27" – 48"  
 Height: 10" – 48"  
 Depth: 5-1/2" – 30"

- 10" – 22" high has no shelves.
- 22-1/16" – 28" high has one shelf.
- 28-1/16" – 40" high has two shelves.
- 40-1/16" – 48" high has three shelves.

24" Deep		12-1/2" Deep	
BFD2734.5	BFD3934.5	BWD2734.5	BWD3934.5
BFD3034.5	BFD4234.5	BWD3034.5	BWD4234.5
BFD3334.5	BFD4534.5	BWD3334.5	BWD4534.5
BFD3634.5	BFD4834.5	BWD3634.5	BWD4834.5

**BFD/CSBFD2CS - Base Full Door w/Two Center Stiles**


Custom Size Ranges  
 Width: 48" – 72"  
 Height: 10" – 42"  
 Depth: 5-1/2" – 30"

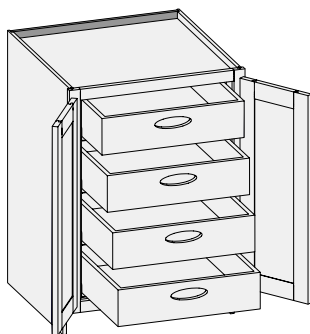
- Additional shelf holes are provided on cabinet back to support wide shelves.
- Doors hinged on center stile require 1/2" overlay hinges for 1-1/4" or 1-3/8" overlay.
- 10" – 22" high has no shelves.
- 22-1/16" – 28" high has one shelf.
- 28-1/16" – 40" high has two shelves.
- 40-1/16" – 48" high has three shelves.
- Unavailable Option: WS.

24" Deep	
BFD5134.5	BFD6334.5
BFD5434.5	BFD6634.5
BFD5734.5	BFD6934.5
BFD6034.5	BFD7234.5

**Base Options Key:** EXP = Exposed End(s) FL = Flush End(s) FUE = Flush Unexposed End(s) SS = Shaped Side PFD = Prep for False Door  
 EXT = Extended Stile(s) FT = Flush Toe SBR = Shaped Bottom Rail LE = Leg Extension TSS = Toe Space Side OS = Omit Shelving  
 NSH = No Shelf Holes WS = Solid Wood Shelves MI = Matching Interior DT = Dust Top PTB = Plywood Toe Backer

Framed | Winter 2025

## BFDRO/CSBFDRO - Base Full Door Roll-Out

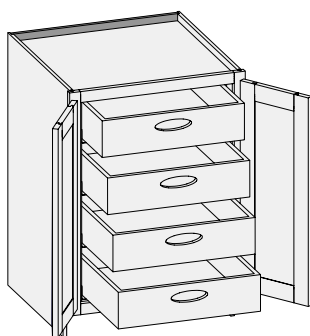


Custom Size Ranges  
 Single Door Width: 12" – 24"  
 Butt Door Width: 24" – 36"  
 Height: 31-1/2" – 34-1/2"  
 Depth: 12", 15", 18",  
 21", 24", 27", 30"

- Units are configured with four 5" high drawer boxes. Interior panels are pre-drilled for drawer slide placement and installation.
- Roll-out drawers include hand pulls. Specify Standard, Circle or Ellipse (shown) pull.
- Specify single or butt doors on custom size cabinets 24" wide.

Single Door Cabinets – 24" Deep		Butt Door Cabinets – 24" Deep	
BFDRO1234.5	BFDRO2134.5	BFDRO2434.5BD	BFDRO3334.5BD
BFDRO1534.5	BFDRO2434.5	BFDRO2734.5BD	BFDRO3634.5BD
BFDRO1834.5		BFDRO3034.5BD	

## BFDROI/CSBFDROI - Base Full Door Roll-Out Inset

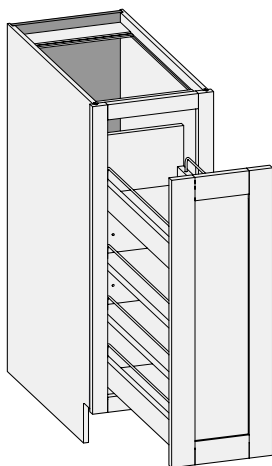


Custom Size Ranges  
 Single Door Width: 15" – 24"  
 Butt Door Width: 24" – 36"  
 Height: 31-1/2" – 34-1/2"  
 Depth: 12", 15", 18",  
 21", 24", 27", 30"

- Specifically designed for inset application.
- Units are configured with four 5" high drawer boxes. Interior panels are pre-drilled for drawer slide placement and installation.
- Drawer slides are 3" less than the depth of the cabinet to accommodate inset doors and hardware.
- Roll-out drawers include hand pulls. Specify Standard, Circle or Ellipse (shown) pull.
- Specify single or butt doors on custom size cabinets 24" wide.

Single Door Cabinets – 24" Deep		Butt Door Cabinets – 24" Deep	
BFDROI1534.5	BFDROI2134.5	BFDROI2434.5BD	BFDROI3334.5BD
BFDROI1834.5	BFDROI2434.5	BFDROI2734.5BD	BFDROI3634.5BD
		BFDROI3034.5BD	



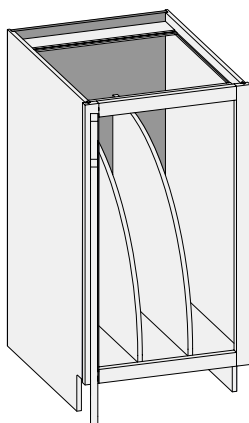
**BFDPO/CSBFDPO Base Full Door Pull Out**


Custom Size Ranges  
 Width: 9", 12", 15"  
 and 18"  
 Height: 34-1/2"  
 Depth: 24"

- Cabinet depth is 24". Depth customization is not available due to pull-out and hardware requirements.
- Unit includes a fully assembled pull-out that includes full extension drawer slides and a mounting cleat for quick and easy installation.
- Pull-out is constructed from Natural Birch solids and plywood finished with a durable, clear UV topcoat and includes two fixed shelves and two adjustable shelves.
- Integrated 6-way adjustable door mounting hardware allows for easy installation for all overlays.
- Unavailable Option: WS.

**24" Deep**

BFDPO0934.5	BFDPO1234.5	BFDPO1534.5	BFDPO1834.5
-------------	-------------	-------------	-------------

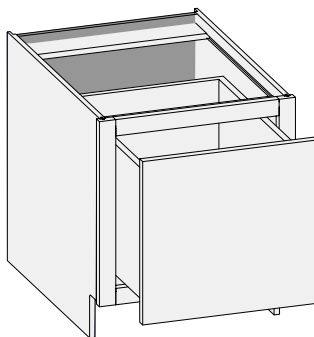
**BFDTD/CSBFDTD Base Full Door Tray Divider**


Custom Size Ranges  
 Width: 9" - 18"  
 Height: 34-1/2"  
 Depth: 24"

- Cabinet depth is 24". Depth customization is not available due to tray divider design and installation requirements.
- Dividers are constructed from 1/2" Natural Birch UV topcoat plywood with an edgebanded front edge.
- Cabinet floor is dovetailed and back includes pilot holes to install dividers.
- Units 9" - 12" have 1 divider centered; units 12-1/16" - 18" have 2 dividers. As cabinet width increases, space between dividers increases equally.
- Unavailable Option: WS.

**24" Deep**

BFDTD0934.5	BFDTD1234.5	BFDTD1534.5	BFDTD1834.5
-------------	-------------	-------------	-------------

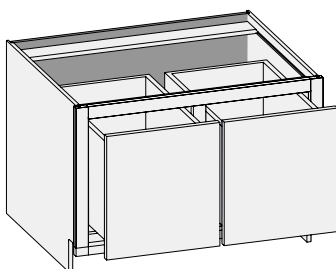
**CSB1D - Base One Drawer**


Custom Size Ranges  
 Width: 12" - 36"  
 Height: 12" - 21"  
 Depth: 12", 15", 18",  
 21", 24", 27",  
 30"

- When height changes, drawer box height changes proportionately.



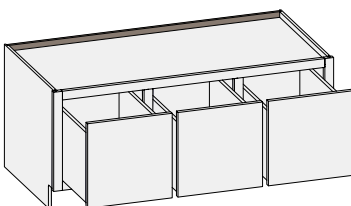
### CSB1DCS - Base One Drawer w/Center Stile



Custom Size Ranges  
Width: 30" – 48"  
Height: 12" – 21"  
Depth: 12", 15", 18",  
21", 24", 27", 30"

- When height changes, drawer box height changes proportionately.

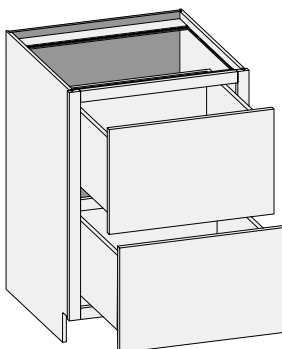
### CSB1D2CS - Base One Drawer w/ 2 Center Stiles



Custom Size Ranges  
Width: 36" – 96"  
Height: 12" – 21"  
Depth: 12", 15", 18",  
21", 24", 27", 30"

- When height changes, drawer box height changes proportionately.
- The width of the drawer fronts are equal. Front frame opening widths are adjusted accordingly based on selected door overlay to maintain published reveals.

### B2D/CSB2D - Base Two Drawer

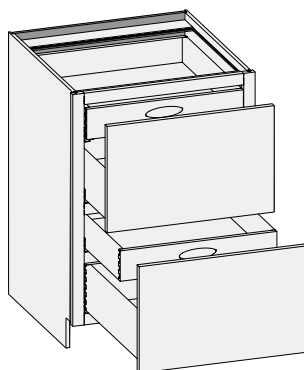


Custom Size Ranges  
Width: 12" – 39"  
Height: 31-1/2" – 34-1/2"  
Depth: 12", 15", 18", 21",  
24", 27", 30"

- When height changes, both drawer heights are equal.

24" Deep	
B2D1234.5	B2D2734.5
B2D1534.5	B2D3034.5
B2D1834.5	B2D3334.5
B2D2134.5	B2D3634.5
B2D2434.5	B2D3934.5

### B2DRO/CSB2DRO - Base Two Drawer Roll-Out

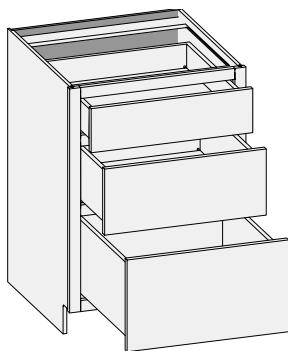


Custom Size Ranges  
Width: 12" – 39"  
Height: 31-1/2" – 34-1/2"  
Depth: 12", 15", 18", 21",  
24", 27", 30"

- Units are configured with 4" high roll-out drawers over 6" high conventional drawer box in each opening.
- Roll-out drawers include hand pulls. Specify Standard, Circle or Ellipse (shown) pull.
- When height changes, both drawer heights are equal.

24" Deep	
B2DRO1234.5	B2DRO2734.5
B2DRO1534.5	B2DRO3034.5
B2DRO1834.5	B2DRO3334.5
B2DRO2134.5	B2DRO3634.5
B2DRO2434.5	B2DRO3934.5

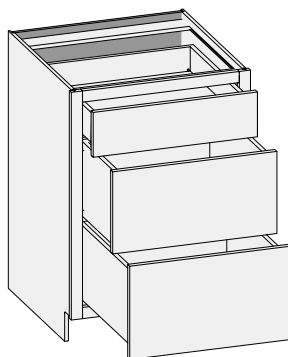
**Base Options Key:** EXP = Exposed End(s) FL = Flush End(s) FUE = Flush Unexposed End(s) SS = Shaped Side PFD = Prep for False Door  
EXT = Extended Stile(s) FT = Flush Toe SBR = Shaped Bottom Rail LE = Leg Extension TSS = Toe Space Side OS = Omit Shelving  
NSH = No Shelf Holes WS = Solid Wood Shelves MI = Matching Interior DT = Dust Top PTB = Plywood Toe Backer

**B3D/CSB3D - Base Three Drawer**


Custom Size Ranges  
 Width: 12" – 39"  
 Height: 31-1/2" – 34-1/2"  
 Depth: 12", 15", 18", 21",  
 24", 27", 30"

- When height changes, lower opening height changes. Upper and middle opening heights fixed at 5" and 8".

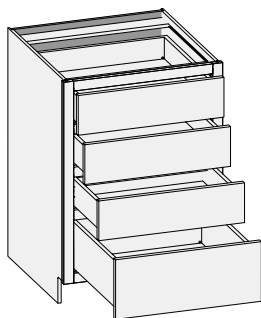
24" Deep	
B3D1234.5	B3D2734.5
B3D1534.5	B3D3034.5
B3D1834.5	B3D3334.5
B3D2134.5	B3D3634.5
B3D2434.5	B3D3934.5

**B3DEH/CSB3DEH - Base Three Drawer w/Two Equal Height Lower Drawers**


Custom Size Ranges  
 Width: 12" – 39"  
 Height: 31-1/2" – 34-1/2"  
 Depth: 12", 15", 18",  
 21", 24", 27", 30"

- When height changes, both lower opening heights change. Upper opening height fixed at 5".
- Lower drawer front heights are equal.

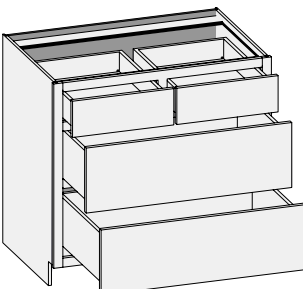
24" Deep	
B3DEH1234.5	B3DEH2734.5
B3DEH1534.5	B3DEH3034.5
B3DEH1834.5	B3DEH3334.5
B3DEH2134.5	B3DEH3634.5
B3DEH2434.5	B3DEH3934.5

**B4D/CSB4D - Base Four Drawer**


Custom Size Ranges  
 Width: 12" – 39"  
 Height: 31-1/2" – 34-1/2"  
 Depth: 12", 15", 18", 21",  
 24", 27", 30"

- When height changes, lower opening height changes. Upper opening height fixed at 5".
- Top 3 drawer front heights are equal.

24" Deep	
B4D1234.5	B4D2134.5
B4D1534.5	B4D2434.5
B4D1834.5	B4D2734.5

**B4D2S2EH/CSB4D2S2EH - Base Four Drawer w/Two Side by Side Equal Height Lower Drawers**


Custom Size Ranges  
 Width: 30" – 39"  
 Height: 31-1/2" – 34-1/2"  
 Depth: 12", 15", 18",  
 21", 24", 27", 30"

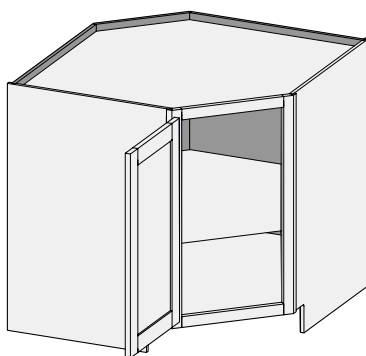
- When height changes, both lower opening heights change. Upper opening height fixed at 5".
- Lower drawer front heights are equal.

24" Deep	
B4D2S2EH3034.5	B4D2S2EH3634.5
B4D2S2EH3334.5	B4D2S2EH3934.5

**Base Options Key:** EXP = Exposed End(s) FL = Flush End(s) FUE = Flush Unexposed End(s) SS = Shaped Side PFD = Prep for False Door  
 EXT = Extended Stile(s) FT = Flush Toe SBR = Shaped Bottom Rail LE = Leg Extension TSS = Toe Space Side OS = Omit Shelving  
 NSH = No Shelf Holes WS = Solid Wood Shelves MI = Matching Interior DT = Dust Top PTB = Plywood Toe Backer

Framed | Winter 2025

## BCFD/CSBCFD - Base Corner Full Door



17" Face  
18-3/32" Frame Width

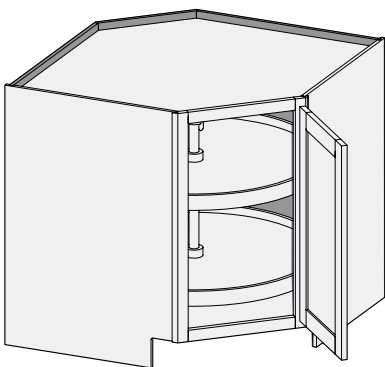
Custom Size Ranges  
Width: 36"  
Height: 31-1/2" – 42"  
Depth: 36"

- Shelf standard.
- Shelf mounted wood susan shelves are available. See Section 11 – Accessories.
- Minimum entry opening width required is 35" (doorways, hallways, etc.).
- When ordered in 1-1/4" and 1-3/8" overlay applications (with or without hinges), cabinets will have their door sized as 1/2" overlay in width only to ensure adequate clearance.
- Use filler or extended stiles accordingly.
- Unavailable Options: SS, PFD, EXT, LE, TSS, WS.

24" Deep Side

BCFD3634.5

## BCFDLS - Base Corner Full Door w/ Lazy Susan



17" Face  
18-3/32" Frame Width

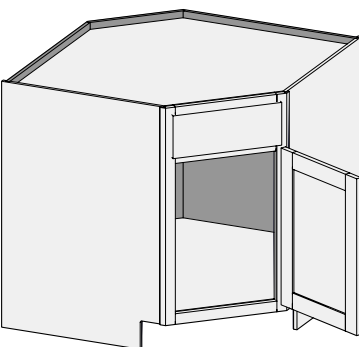
Custom Size Ranges  
Width: 36"  
Height: 34-1/2"  
Depth: 36"

- Cabinet top and bottom are pre-drilled to accept hub assembly.
- Cabinet includes 32" diameter entry level plastic susan with two independently rotating shelves mounted on a center pole.
- White susan shelves feature a self-lubricating nylon bearing and tool-free height adjustment.
- Size customization is not available due to susan size constraints.
- Minimum entry opening width required is 35" (doorways, hallways, etc.).
- When ordered in 1-1/4" and 1-3/8" overlay applications (with or without hinges), cabinets will have their door sized as 1/2" overlay in width only to ensure clearance.
- Not available with inset applications.
- Unavailable Options: SS, PFD, EXT, LE, TSS.

24" Deep Side

BCFDLS 3634.5

## BSC/CSBSC - Base Sink Corner



17" Face  
18-3/32" Frame Width

Custom Size Ranges  
Width: 36"  
Height: 31-1/2" – 42"  
Depth: 36"

- False drawer front.
- Minimum entry opening width required is 35" (doorways, hallways, etc.).
- When ordered in 1-1/4" and 1-3/8" overlay applications (with or without hinges), cabinets will have their door sized as 1/2" overlay in width only to ensure adequate clearance.
- Unavailable Options: SS, PFD, EXT, LE, TSS.

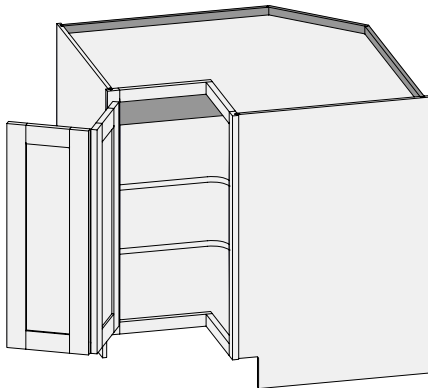
24" Deep Side

BSC3634.5

**Base Options Key:** EXP = Exposed End(s) FL = Flush End(s) FUE = Flush Unexposed End(s) SS = Shaped Side PFD = Prep for False Door  
EXT = Extended Stile(s) FT = Flush Toe SBR = Shaped Bottom Rail LE = Leg Extension TSS = Toe Space Side OS = Omit Shelving  
NSH = No Shelf Holes WS = Solid Wood Shelves MI = Matching Interior DT = Dust Top PTB = Plywood Toe Backer

**BCP/CSBCP – Base Corner Pie Cut**

Custom Size Ranges  
 Width: 33" – 42"  
 Height: 31-1/2" – 42"  
 Depth: 33" – 42"



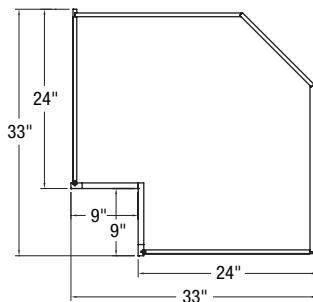
- Plywood shelf standard; wood shelf upgrade available on BCP3634.5 only.
- Shelf mounted wood susan shelves are available. See Section 11 – Accessories.
- CSBCP available with custom size legs. Specified width (left dimension) and depth (right dimension). Side dimension remains fixed; front frame pie cut opening adjusts as size changes.
- Minimum entry opening width required for BCP3634.5 is 35" (doorways, hallways etc.).
- When hinges are ordered in 1-1/4" and 1-3/8" overlay applications, cabinets will have their door sized as 1/2" overlay in width only.
- If hinges are not specified, 1-1/4" and 1-3/8" overlay sizing rules apply. These overlays require adequate clearance for door functionality between corner and adjacent cabinets. Use filler or extended stiles accordingly.
- Optional Soss hinges available.
- Unavailable Options: SS, PFD, EXT, LE, TSS, WS.

**24" Deep Side**

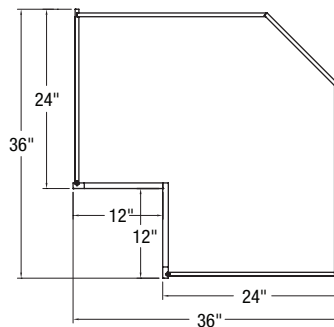
BCP3334.5

BCP3634.5

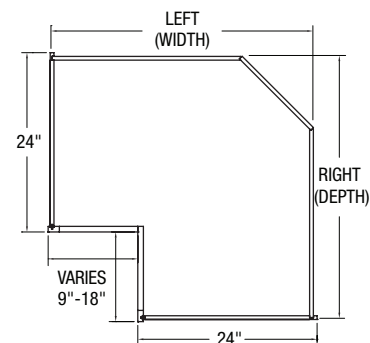
BCP3334.5



BCP3634.5

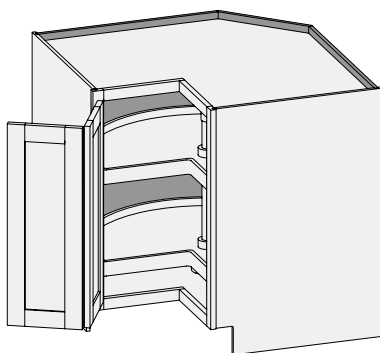


CSBCP



**Base Options Key:** EXP = Exposed End(s) FL = Flush End(s) FUE = Flush Unexposed End(s) SS = Shaped Side PFD = Prep for False Door  
 EXT = Extended Stile(s) FT = Flush Toe SBR = Shaped Bottom Rail LE = Leg Extension TSS = Toe Space Side OS = Omit Shelving  
 NSH = No Shelf Holes WS = Solid Wood Shelves MI = Matching Interior DT = Dust Top PTB = Plywood Toe Backer

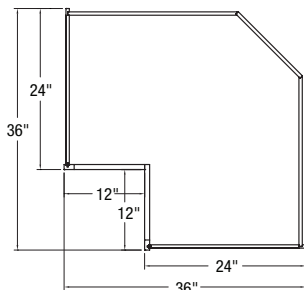
## BCPLS – Base Corner Pie Cut Lazy Susan



Custom Size Ranges  
Width: 36"  
Height: 34-1/2"  
Depth: 36"

- Cabinet top and bottom is pre-drilled to accept hub assembly.
- Cabinet includes 32" diameter entry level plastic susan with two independently rotating kidney shelves mounted on a center pole.
- White susan shelves feature a self-lubricating nylon bearing and tool-free height adjustment.
- Height customization is not available due to susan size constraints.
- Minimum entry opening width required is 35" (doorways, hallways, etc.).
- When hinges are ordered in 1-1/4" and 1-3/8" overlay applications, cabinets will have their door sized as 1/2" overlay in width only.
- If hinges are not specified, 1-1/4" and 1-3/8" overlay sizing rules apply. These overlays require adequate clearance for door functionality between corner and adjacent cabinets. Use filler or extended stiles accordingly.
- Not available with inset applications.
- Optional Soss hinges available.
- Unavailable Options: SS, PFD, EXT, LE, TSS, WS.

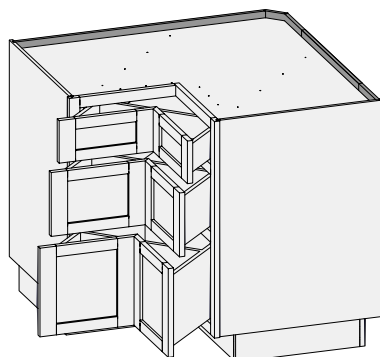
**BCPLS3634.5**



**24" Deep Side**

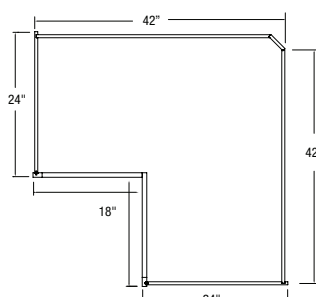
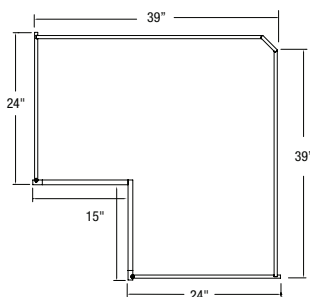
BCPLS3634.5

## BCP3D/CSBCP3D – Base Corner Pie Cut Three Drawer



Custom Size Ranges  
Width: 39", 42"  
Height: 31-1/2" – 34-1/2"  
Depth: 39", 42"

- 1-1/4" and 1-3/8" overlay applications will have their drawer fronts sized as 1/2" overlay in width only.
- Not available with inset applications.
- Not available with miter drawer front.
- Cabinet includes corner drawer boxes with back extensions.
- Each drawer front comes as two separate pieces using edge profile L-151 (45 degrees) standard to form the mitered inside corner.
- 5-piece drawer fronts, one stile on each will be 3/4" wider on the mitered edge to form the inside corner. Wide framing upcharges will apply.
- Exterior edge profiles can be specified to match adjacent cabinetry.
- Customizable in height only.
- When height changes, lower opening height changes. Upper and middle opening heights fixed at 5" and 8".
- Separate 4" high toe platform is standard to aid in passing through doorways.
- Minimum entry opening with width required is 35" (doorways, hallways, etc.).
- Unavailable Options: SS, PFD, EXT, LE, TSS, WS.



**24" Deep Side**

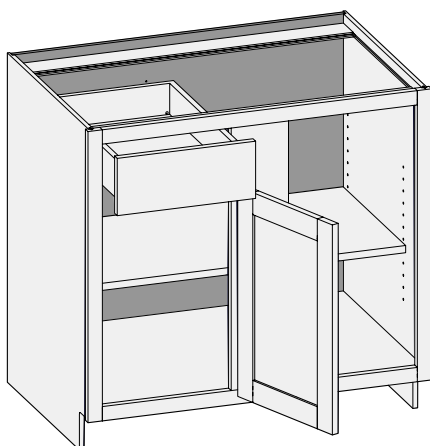
BCP3D3934.5

BCP3D4234.5

**Base Options Key:** EXP = Exposed End(s) FL = Flush End(s) FUE = Flush Unexposed End(s) SS = Shaped Side PFD = Prep for False Door  
EXT = Extended Stile(s) FT = Flush Toe SBR = Shaped Bottom Rail LE = Leg Extension TSS = Toe Space Side OS = Omit Shelving  
NSH = No Shelf Holes WS = Solid Wood Shelves MI = Matching Interior DT = Dust Top PTB = Plywood Toe Backer

**BBCR/CSBBCR – Base Blind Cabinet Blind Right**

Custom Size Ranges  
 Width: 36" – 48"  
 Height: 31-1/2" - 42"  
 Depth: 12", 15", 18", 21", 24",  
 27", 30"  
 Functional opening: 12" – 21"



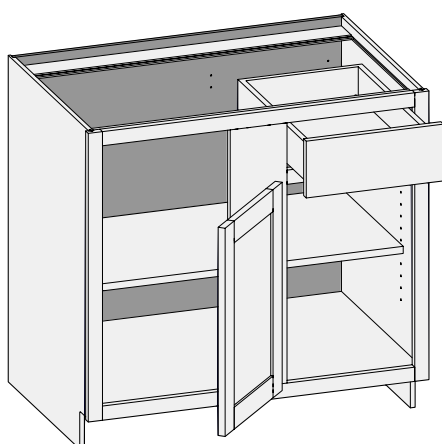
6" Center Stile

- Overall cabinet size is the actual width specified.
- Blind section is on the right.
- Specify functional opening width between 12" and 21".
- Door is always hinged on center stile for all overlays.
- When height changes, lower opening height changes. Drawer height fixed at 5".
- 1-1/4" and 1-3/8" overlay use 1/2" overlay hinges.
- Door height and adjacent reveal will follow overlay specified.
- Minimum exposed blind amount for all overlays is 2-1/2" to ensure adequate clearance for adjacent door and drawer function.
- Excessive hardware projection may require a greater amount of exposed blind. Design and install accordingly.
- Unavailable Options: SS and TSS.

24" Deep	
BBCR3634.5	BBCR4534.5
BBCR3934.5	BBCR4834.5
BBCR4234.5	

**BBCL/CSBBCL – Base Blind Cabinet Blind Left**

Custom Size Ranges  
 Width: 36" – 48"  
 Height: 31-1/2" - 42"  
 Depth: 12", 15", 18", 21", 24",  
 27", 30"  
 Functional opening: 12" – 21"



6" Center Stile

- Overall cabinet size is the actual width specified.
- Blind section is on the left.
- Specify functional opening width between 12" and 21".
- Door is always hinged on center stile for all overlays.
- When height changes, lower opening height changes. Drawer height fixed at 5".
- 1-1/4" and 1-3/8" overlay use 1/2" overlay hinges.
- Door height and adjacent reveal will follow overlay specified.
- Minimum exposed blind amount for all overlays is 2-1/2" to ensure adequate clearance for adjacent door and drawer function.
- Excessive hardware projection may require a greater amount of exposed blind. Design and install accordingly.
- Unavailable Options: SS and TSS.

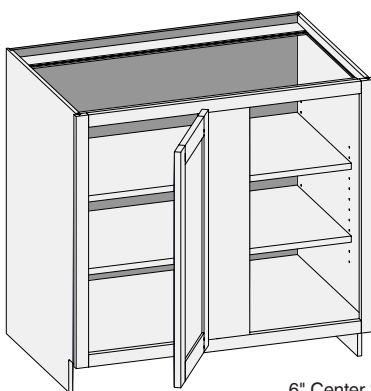
24" Deep	
BBCL3634.5	BBCL4534.5
BBCL3934.5	BBCL4834.5
BBCL4234.5	

**Base Options Key:** EXP = Exposed End(s) FL = Flush End(s) FUE = Flush Unexposed End(s) SS = Shaped Side PFD = Prep for False Door  
 EXT = Extended Stile(s) FT = Flush Toe SBR = Shaped Bottom Rail LE = Leg Extension TSS = Toe Space Side OS = Omit Shelving  
 NSH = No Shelf Holes WS = Solid Wood Shelves MI = Matching Interior DT = Dust Top PTB = Plywood Toe Backer

Framed | Winter 2025

## BFDBCR/CSBFDBCR – Base Full Door Blind Cabinet Blind Right

Custom Size Ranges  
Width: 36" – 48"  
Height: 31-1/2" - 42"  
Depth: 12" – 30"  
Functional opening: 12" – 21"



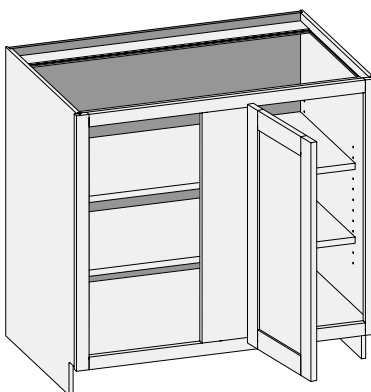
6" Center Stile

- Overall cabinet size is the actual width specified.
- Blind section is on the right.
- Specify functional opening width between 12" and 21".
- Door is always hinged on center stile for all overlays.
- 1-1/4" and 1-3/8" overlay use 1/2" overlay hinges.
- Door height and adjacent reveal will follow overlay specified.
- Minimum exposed blind amount for all overlays is 2-1/2" to ensure adequate clearance for adjacent door and drawer function.
- Excessive hardware projection may require a greater amount of exposed blind. Design and install accordingly.
- Unavailable Options: SS and TSS.

24" Deep	
BFDBCR3634.5	BFDBCR4534.5
BFDBCR3934.5	BFDBCR4834.5
BFDBCR4234.5	

## BFDBCL/CSBFDBCL – Base Full Door Blind Cabinet Blind Left

Custom Size Ranges  
Width: 36" – 48"  
Height: 31-1/2" - 42"  
Depth: 12" – 30"  
Functional opening: 12" – 21"



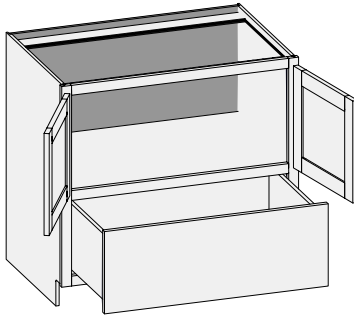
6" Center Stile

- Overall cabinet size is the actual width specified.
- Blind section is on the left.
- Specify functional opening width between 12" and 21".
- Door is always hinged on center stile for all overlays.
- 1-1/4" and 1-3/8" overlay use 1/2" overlay hinges.
- Door height and adjacent reveal will follow overlay specified.
- Minimum exposed blind amount for all overlays is 2-1/2" to ensure adequate clearance for adjacent door and drawer function.
- Excessive hardware projection may require a greater amount of exposed blind. Design and install accordingly.
- Unavailable Options: SS and TSS.

24" Deep	
BFDBCL3634.5	BFDBCL4534.5
BFDBCL3934.5	BFDBCL4834.5
BFDBCL4234.5	

**Base Options Key:** EXP = Exposed End(s) FL = Flush End(s) FUE = Flush Unexposed End(s) SS = Shaped Side PFD = Prep for False Door  
EXT = Extended Stile(s) FT = Flush Toe SBR = Shaped Bottom Rail LE = Leg Extension TSS = Toe Space Side OS = Omit Shelving  
NSH = No Shelf Holes WS = Solid Wood Shelves MI = Matching Interior DT = Dust Top PTB = Plywood Toe Backer

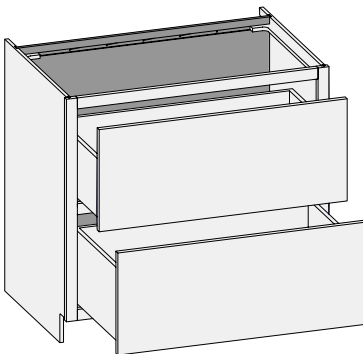


**BCT/CSBCT - Base Cook Top w/Butt Doors**


Custom Size Ranges  
 Width: 30" – 42"  
 Height: 31-1/2" – 42"  
 Depth: 12", 15", 18",  
 21", 24", 27", 30"

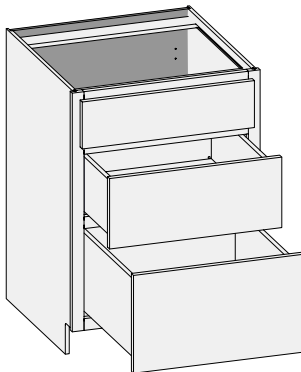
- When height changes, upper opening height changes, lower opening height fixed at 11-1/2".

24" Deep	
BCT3034.5BD	BCT3934.5BD
BCT3334.5BD	BCT4234.5BD
BCT3634.5BD	

**CSBCT2D - Base Cook Top Two Drawer**


Custom Size Ranges  
 Width: 36" – 48"  
 Height: 34-1/2"  
 Depth: 24", 27", 30"

- Designed for countertop mounted professional-style cooktops (non-downdraft ventilation units).
- Cabinet back recessed 3" to accommodate and conceal supply lines. Drawer box depth is 3" less due to the recessed back.
- Top drawer box is 8" high to accommodate appliance housing. Bottom drawer box is 10" high.

**7**
**Advantage Base Cabinets**
**BR3D/CSBR3D - Base Range Three Drawer**


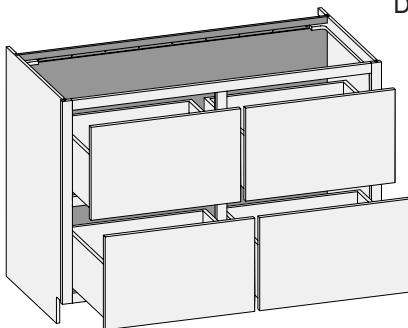
Custom Size Ranges  
 Width: 30" – 39"  
 Height: 31-1/2" – 34-1/2"  
 Depth: 12", 15", 18",  
 21", 24", 27", 30"

- False top drawer front.
- When height changes, lower opening height changes. Upper drawer and middle opening heights fixed at 5" and 8".

24" Deep
BR3D3034.5
BR3D3634.5

**Base Options Key:** EXP = Exposed End(s) FL = Flush End(s) FUE = Flush Unexposed End(s) SS = Shaped Side PFD = Prep for False Door  
 EXT = Extended Stile(s) FT = Flush Toe SBR = Shaped Bottom Rail LE = Leg Extension TSS = Toe Space Side OS = Omit Shelving  
 NSH = No Shelf Holes WS = Solid Wood Shelves MI = Matching Interior DT = Dust Top PTB = Plywood Toe Backer

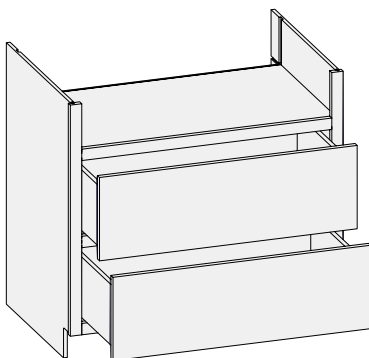
### CSBCT4D - Base Cook Top Four Drawer



Custom Size Ranges  
Width: 36" – 60"  
Height: 34-1/2"  
Depth: 24", 27", 30"

- Designed for countertop mounted professional-style cooktops (non-downdraft ventilation units).
- When cabinet width changes, drawer front widths remain equal.
- Cabinet back recessed 3" to accommodate and conceal supply lines. Drawer box depth is 3" less due to the recessed back.
- Top drawer box is 8" high to accommodate appliance housing. Bottom drawer box is 10" high.

### BRT2D/CSBRT2D - Base Range Top Two Drawer

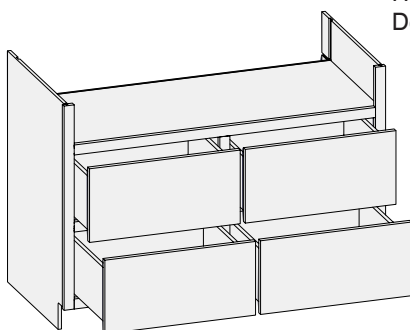


Custom Size Ranges  
Width: 36" – 48"  
Height: 34-1/2"  
Depth: 24", 27", 30"

- Designed for professional-style cooktop units.
- 6" high standard opening includes full floor to support appliance. Opening height is customizable from 5" to 8" in 1/16" increments.
- Cabinet back recessed 3" to accommodate and conceal supply lines. Drawer box depth is 3" less due to the recessed back.
- Both drawer boxes are 8" high.

24" Deep	
BRT2D3634.5	BRT2D4534.5
BRT2D3934.5	BRT2D4834.5
BRT2D4234.5	

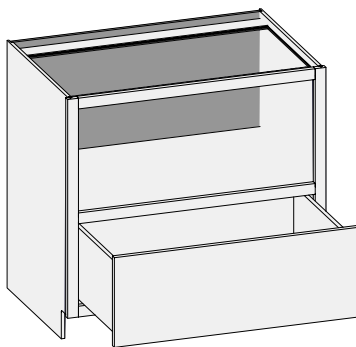
### CSBRT4D - Base Range Top Four Drawer



Custom Size Ranges  
Width: 36" – 60"  
Height: 34-1/2"  
Depth: 24", 27", 30"

- Designed for professional-style cooktop units.
- 6" high standard opening includes full floor to support appliance. Opening height is customizable from 5" to 8" in 1/16" increments.
- When cabinet width changes, all drawer widths remain equal.
- Cabinet back is recessed 3" to conceal supply lines. Drawer box depth is also 3" less due to the recessed back.
- All drawer boxes are 8" high.

## BUCM/CSBUCM - Base Under Counter Microwave



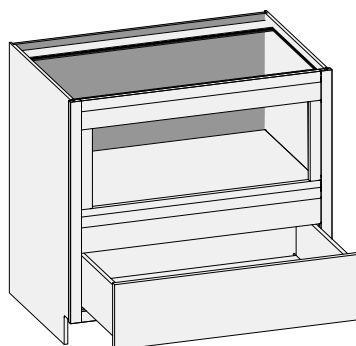
Custom Size Ranges  
Width: 24" – 36"  
Height: 31-1/2" – 42"  
Depth: 12", 15", 18",  
21", 24", 27", 30"

- For 34-1/2" high cabinets, top opening height is 15-3/4".
- When height changes, upper opening height changes. Lower opening height fixed at 10-1/4".

### 24" Deep

BUCM2434.5
BUCM2734.5
BUCM3034.5

## BIUCM/CSBIUCM - Built-In Under Counter Microwave



4" Top and Middle Rails

Custom Size Ranges  
Width: 24" – 36"  
Height: 31-1/2" – 42"  
Depth: 12", 15", 18",  
21", 24", 27", 30"

- Microwave opening is 13" high, width is 6" less than cabinet width.
- Microwave opening is trimmable up to 5" in height and 3" in width.
- For 34-1/2" high cabinets, top opening height is 13".
- When height changes, upper opening height changes. Lower opening height fixed at 8".

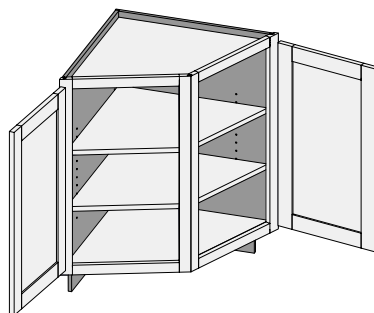
### 24" Deep

BIUCM2734.5	BIUCM3334.5
BIUCM3034.5	BIUCM3634.5

7

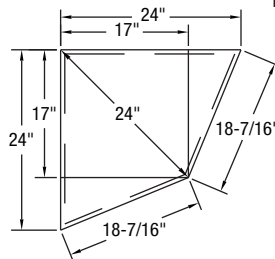
Advantage Base Cabinets

## BAE/CSBAE - Base Angle End



Custom Size Ranges  
Width: 24"  
Height: 31-1/2" – 42"  
Depth: 24"

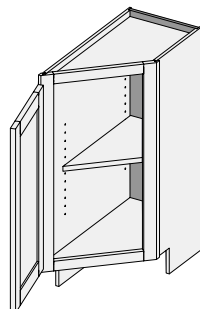
- Two 15" wide openings.
- 1-13/16" wide stiles outside, 1-5/8" wide stiles inside.
- Unavailable Options: EXP, FL, FUE, SS, PFD, EXT, SBR, LE, TSS.



### 24" Deep

BAE2434.5
-----------

## BEAR(L)/CSBEAR(L) - Base End Angle Right (or Left)



Custom Size Ranges  
Width: 12"  
Height: 31-1/2" – 42"  
Depth: 24"

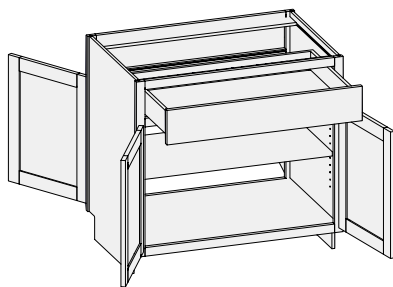
- Units are reversible right or left (right shown).
- 1-13/16" stile face width.
- Flush end available on 12-1/2" deep side.
- Exposed end available on 24" deep side.
- Unavailable Options: SS, PFD, EXT, SBR, LE, TSS.

### 24" Deep

BEAL1234.5
BEAR1234.5

**Base Options Key:** EXP = Exposed End(s) FL = Flush End(s) FUE = Flush Unexposed End(s) SS = Shaped Side PFD = Prep for False Door  
EXT = Extended Stile(s) FT = Flush Toe SBR = Shaped Bottom Rail LE = Leg Extension TSS = Toe Space Side OS = Omit Shelving  
NSH = No Shelf Holes WS = Solid Wood Shelves MI = Matching Interior DT = Dust Top PTB = Plywood Toe Backer

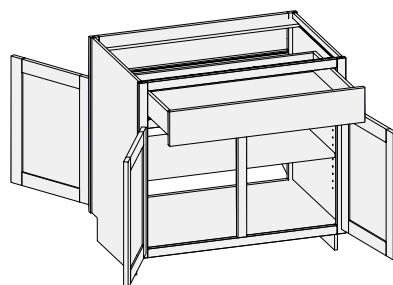
### CSBDE - Base Double Entry w/Butt Doors



Custom Size Ranges  
Width: 24" – 36"  
Height: 31-1/2" – 42"  
Depth: 12", 15", 18",  
21", 24", 27", 30"

- One false drawer front on one side, functional top drawer on opposite side.
- When height changes, lower opening height changes. Drawer height fixed at 5".
- Specify single or butt doors on custom size cabinets 24" wide.
- Unavailable Options: LE and WS.

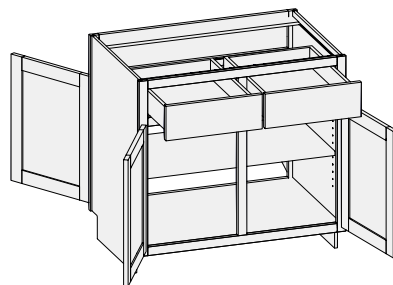
### CSBDE2D1D - Base Double Entry Two Door One Drawer



Custom Size Ranges  
Width: 27" – 36"  
Height: 31-1/2" – 42"  
Depth: 12", 15", 18",  
21", 24", 27", 30"

- One false drawer front on one side, functional top drawer on opposite side.
- When height changes, lower opening height changes. Drawer height fixed at 5".
- Unavailable Options: LE and WS.

### BDE/CSBDECS - Base Double Entry w/Center Stile

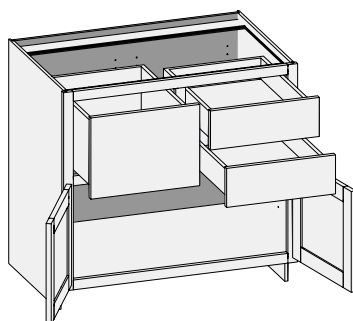


Custom Size Ranges  
Width: 30" – 48"  
Height: 31-1/2" – 42"  
Depth: 12", 15", 18",  
21", 24", 27", 30"

- Two false drawer fronts on one side, functional top drawers on opposite side.
- When height changes, lower opening height changes. Drawer height fixed at 5".
- Unavailable Options: LE and WS.

24" Deep	
BDE3034.5	BDE4234.5
BDE3634.5	BDE4834.5

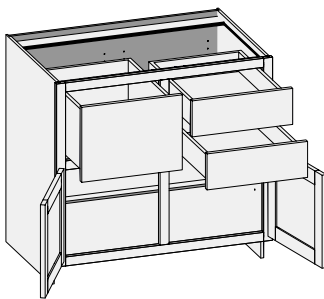
### CSBC3DL - Base Combo Three Drawer Left w/Butt Doors



Custom Size Ranges  
Width: 24" – 36"  
Height: 31-1/2" – 42"  
Depth: 12", 15", 18",  
21", 24", 27", 30"

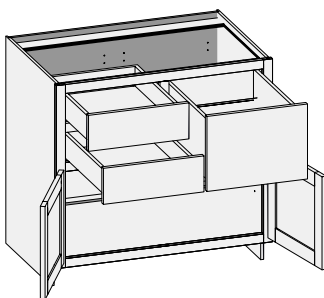
- When height changes, lower opening height changes. Drawer opening height fixed at 5" and 11-1/2".
- When width changes, drawer opening widths remain equal.

**Base Options Key:** EXP = Exposed End(s) FL = Flush End(s) FUE = Flush Unexposed End(s) SS = Shaped Side PFD = Prep for False Door  
EXT = Extended Stile(s) FT = Flush Toe SBR = Shaped Bottom Rail LE = Leg Extension TSS = Toe Space Side OS = Omit Shelving  
NSH = No Shelf Holes WS = Solid Wood Shelves MI = Matching Interior DT = Dust Top PTB = Plywood Toe Backer

**CSBC3DLCS - Base Combo Three Drawer Left w/Center Stile**


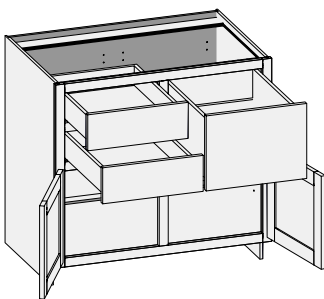
Custom Size Ranges  
 Width: 27" – 48"  
 Height: 31-1/2" – 42"  
 Depth: 12", 15", 18",  
 21", 24", 27", 30"

- When height changes, lower opening height changes. Drawer opening height is fixed at 5" and 11-1/2".
- When width changes, drawer opening widths remain equal.

**CSBC3DR - Base Combo Three Drawer Right w/Butt Doors**


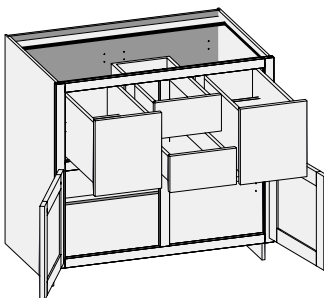
Custom Size Ranges  
 Width: 24" – 36"  
 Height: 31-1/2" – 42"  
 Depth: 12", 15", 18",  
 21", 24", 27", 30"

- When height changes, lower opening height changes. Drawer opening height is fixed at 5" and 11-1/2".
- When width changes, drawer opening widths remain equal.

**CSBC3DRCS - Base Combo Three Drawer Right w/Center Stile**


Custom Size Ranges  
 Width: 27" – 48"  
 Height: 31-1/2" – 42"  
 Depth: 12", 15", 18",  
 21", 24", 27", 30"

- When height changes, lower opening height changes. Drawer opening height is fixed at 5" and 11-1/2".
- When width changes, drawer opening widths remain equal.

**CSBC4DCS - Base Combo Four Drawer**


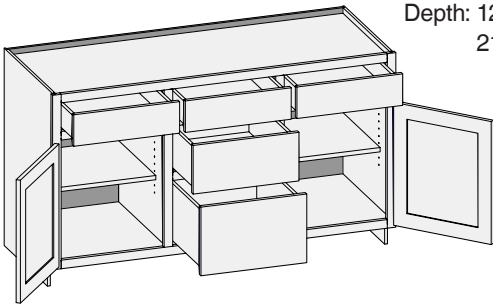
Custom Size Ranges  
 Width: 36" – 48"  
 Height: 31-1/2" – 42"  
 Depth: 12", 15", 18",  
 21", 24", 27", 30"

- When height changes, lower opening height changes. Drawer opening height is fixed at 5" and 11-1/2".
- When width changes, drawer opening widths remain equal.

**Base Options Key:** EXP = Exposed End(s) FL = Flush End(s) FUE = Flush Unexposed End(s) SS = Shaped Side PFD = Prep for False Door  
 EXT = Extended Stile(s) FT = Flush Toe SBR = Shaped Bottom Rail LE = Leg Extension TSS = Toe Space Side OS = Omit Shelving  
 NSH = No Shelf Holes WS = Solid Wood Shelves MI = Matching Interior DT = Dust Top PTB = Plywood Toe Backer

Framed | Winter 2025

CSB2D5D - Base Two Door Five Drawer



Custom Size Ranges

Door Width: 48" – 96"

Height: 31-1/2" – 34-1/2"

Depth: 12", 15", 18"  
21", 24", 27", 30"

- Cabinet widths 48" to 72" have two doors; widths 60" to 96" have four butt doors.
- When height changes, lower opening height changes. Top drawer opening height fixed at 5". Middle drawer opening height fixed at 8".
- Doors hinged on center stile require 1/2" overlay hinges for 1-1/4" or 1-3/8" overlays.
- When width changes, all openings are configured equally.
- Fixed vertical partitions with independently adjustable shelves.
- Unavailable Option: PFD

7

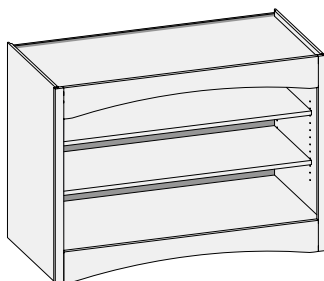
Advantage Base Cabinets

Base Options Key:
EXP = Exposed End(s)
FL = Flush End(s)
FUE = Flush Unexposed End(s)
SS = Shaped Side
PFD = Prep for False Door
EXT = Extended Stile(s)
FT = Flush Toe
SBR = Shaped Bottom Rail
LE = Leg Extension
TSS = Toe Space Side
OS = Omit Shelving
NSH = No Shelf Holes
WS = Solid Wood Shelves
MI = Matching Interior
DT = Dust Top
PTB = Plywood Toe Backer

Framed | Winter 2025

7.21

## CSBOU - Base Open Unit



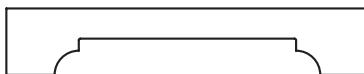
CWS4 – Roman Arch shown

Custom Size Ranges  
Width: 15" – 48"  
Height: 31-1/2" – 48"  
Depth: 5-1/2" – 30"

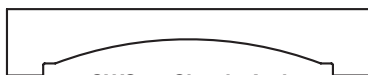
- Available with valance designs on top and bottom rails. To order specify using CWS designations associated with the valance design.
- Top and bottom rails are 5-1/2" high for all valance designs and Flush Toe Option.
- If no valance design is selected, top rail is 1-1/2" high.
- When a toe kick is selected, bottom rail is 1-1/2" high.
- Minimum width is 15".
- Unavailable Option: WS.



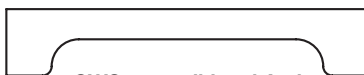
CWS4 – Roman Arch



CWS6 – Elegant Arch

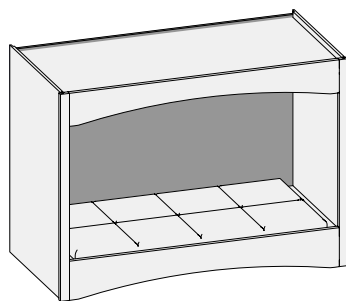


CWS5 – Classic Arch



CWS7 – Traditional Arch

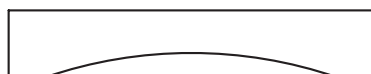
## CSBPU - Base Pet Unit



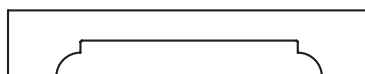
CWS4 – Roman Arch shown

Custom Size Ranges  
Width: 30" – 48"  
Height: 31-1/2" – 48"  
Depth: 15" – 24"

- Available with valance designs on top and bottom rails. To order specify using CWS designations associated with the valance design.
- Top rail is 5-1/2" for all valance designs.
- If no valance design is selected, top rail is 1-1/2" high.
- Bottom rail is 6-1/2" high for all valance designs and Flush Toe Option. 1" rail extension provides a lip to keep pet bed in place (pet bed not included).
- When a toe kick is selected, bottom rail is 2-1/2" high.
- Minimum width is 15".



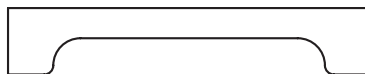
CWS4 – Roman Arch



CWS6 – Elegant Arch



CWS5 – Classic Arch



CWS7 – Traditional Arch

**Base Options Key:** EXP = Exposed End(s) FL = Flush End(s) FUE = Flush Unexposed End(s) SS = Shaped Side PFD = Prep for False Door  
EXT = Extended Stile(s) FT = Flush Toe SBR = Shaped Bottom Rail LE = Leg Extension TSS = Toe Space Side OS = Omit Shelving  
NSH = No Shelf Holes WS = Solid Wood Shelves MI = Matching Interior DT = Dust Top PTB = Plywood Toe Backer