

Advantage Tall Cabinet Standard Features and Options

The information described below discusses some of the features and options of Advantage Tall cabinets. Customers have the option to omit these standard features as well as add other design options, which can be quickly referenced at the bottom of each page in the Tall Cabinet Section labeled "Tall Options Key". For more detailed descriptions and images of all available options see Options, Section 12 within this manual. The options described below are available on all Tall cabinets unless specifically noted next to the individual cabinet as **Unavailable Options**.

Standard Shelving & Omit Shelving (OS) – 3/4" thick White Birch plywood shelving with a durable UV topcoat is standard with any Tall cabinet with shelves. If shelving is not desired within a specific cabinet, indicate **Omit Shelving Option** when ordering.

5mm Shelf Holes & No Shelf Holes (NSH) – Pre-drilled 5mm shelf holes on 32mm centers are a standard feature of all Tall cabinets with shelves. If shelf holes are not desired, indicate **No Shelf Holes Option** when ordering. **Note:** If shelving and shelf holes are not desired, both No Shelf Holes and Omit Shelving must be specified when ordering.

Cabinet Case Material Options – Most optional cabinet case materials will match the door, drawer front and face frame specie and are available with Tall cabinets produced in standard Advantage species.

- **Exposed Ends (EXP)** – Matching specie veneer on the exterior face of 1/2" thick plywood cabinet sides. The interior of plywood Exposed Ends will remain as White Birch.
- **Flush Ends (FL)** – Matching specie veneer on the exterior face of 3/4" thick plywood cabinet sides. The interior of plywood Flush Ends will remain as White Birch.
- **Flush Unexposed Ends (FUE)** – Natural Birch veneer on the exterior face of the 3/4" thick flush plywood cabinet sides. Designed to be utilized when extra support is desired from non-exposed flush end panels. The interior of the plywood Flush Unexposed Ends will remain as White Birch.
- **Matching Interior (MI)** – Matching specie veneer is available on all internal cabinet parts. The Matching Interior Option is not available in combination with the Solid Wood Shelf Upgrade Option.

Solid Wood Shelf Upgrade (WS) – The **Solid Wood Shelf Upgrade Option** replaces standard White Birch prefinished plywood shelving with solid wood Natural Birch shelving. The Solid Wood Shelving is 3/4" thick with a bullnosed front edge and finished with a UV topcoat. The Solid Wood Shelf Upgrade Option is not available in combination with the Matching Interior Option or when Tall cabinets are deeper than 24". Solid shelving available up to 18" deep.

Extended Stiles (EXT) – The **Extended Stile Option** provides additional width on the left, right or both stiles of the front frame. Up to 3" of additional material provides clearance between the cabinet and adjacent walls or other cabinetry allowing cabinet doors and drawers to fully open without interference. Extended stiles also provide the opportunity to scribe the frame to the wall contours during the installation process.

Leg Extension (LE) – the **Leg Extension Option** can be added to the left, right or both stiles of the front frame. When selected, the Leg Extension Option omits the toe kick from the cabinet and extends the front frame stile(s) to the floor creating a closed end panel to the cabinet.

Prep for False Door Side (PFD) – The **Prep for False Door Side Option** maintains the overall front frame width ordered, but relocates the cabinet side panel, moving it inward by 13/16" for each Prep for False Door Side selected. This creates a 3/4" reveal behind the 1-1/2" wide front frame stile to accommodate the decorative door end panel. The Prep for False Door Side Option can be ordered for the left, right or both cabinet sides. All cabinet components are automatically resized accordingly when the Prep for False Door Side Option is selected.

Square Toe Kick Notch (STN) – Standard Tall cabinet side panels have a 3-1/2" deep x 4" high toe kick notch with a 1/4" radius at the intersecting corner. This corner can be squared with the **Square Toe Notch Option** which makes the corner notch 90° to aid in toe board installation.

Flush Toe (FT) – When selected, the **Flush Toe Option** replaces the standard toe kick notches in both side panels with a 5-1/2" bottom rail on the front frame.

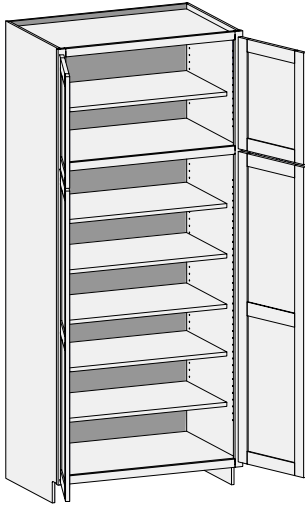
Shaped Bottom Rail (SBR) – The **Shaped Bottom Rail Option** automatically adds the Flush Toe to the cabinet's front frame. The 5-1/2" wide bottom rail gives customers the choice of 6 decorative shapes on the bottom rail of the Flush Toe, providing a furniture type appearance.

Shaped Side (SS) – The **Shaped Side Option** provides a choice of 4 decorative shapes on the bottom of Exposed Ends or Flush Ends. The Shaped Side Option is available on left, right, or both sides, but is not available in combination with Extended Stiles, Flushed Unexposed Ends or Loose Toe Platform.

Toe Space Side (TSS) – The **Toe Space Side Option** replaces the bottom 4" of the side panel with a recessed toe space on the left, right or both sides of most Tall cabinets. This option is commonly used on island or peninsula cabinet sides.

Loose Toe Platform (LTP) – When the **Loose Toe Platform Option** is selected, the overall Tall cabinet height is reduced by removing the toe kick from the front of the cabinet and 4" from the side panels and cabinet back. A separate 4" platform is provided to achieve the overall desired cabinet height. The Loose Toe Platform Option is available with most Tall cabinets, but is not available in combination with the Flush Toe or Square Toe Notch Options.

UCD/CSUC - Utility Cabinet

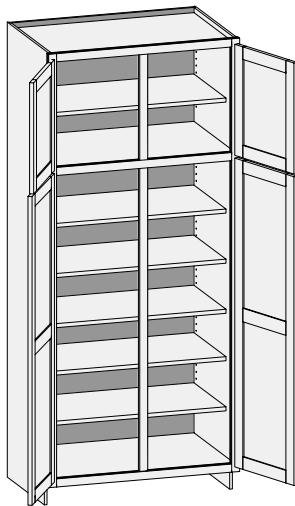


Custom Size Ranges
 Single Door Width: 12" – 24"
 Butt Door Width: 24" – 36"
 Height: 84" – 120"
 Depth: 5-1/2" – 30"

- Matching specie interior is not available over 96" high. White Birch UV topcoated material will be used.
- When height changes, upper opening height changes. Lower opening height fixed at 56".
- 84" – 90" high has six shelves.
- 90-1/16" – 96" high has seven shelves.
- 96-1/16" – 108" high has eight shelves.
- 108-1/16" – 120" high has nine shelves.
- Specify single or butt doors on custom size cabinets 24" wide.

Single Door Cabinet – 24" Deep			Butt Door Cabinet – 24" Deep		
84" High	90" High	96" High	84" High	90" High	96" High
UCD1584	UCD1590	UCD1596	UCD2484BD	UCD2490BD	UCD2496BD
UCD1884	UCD1890	UCD1896	UCD2784BD	UCD2790BD	UCD2796BD
UCD2184	UCD2190	UCD2196	UCD3084BD	UCD3090BD	UCD3096BD
UCD2484	UCD2490	UCD2496	UCD3384BD	UCD3390BD	UCD3396BD
			UCD3684BD	UCD3690BD	UCD3696BD

UCD/CSUCCS - Utility Cabinet w/Center Stile

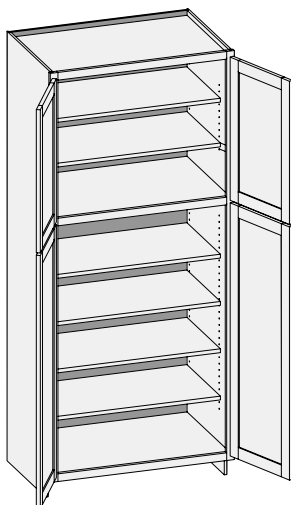


Custom Size Ranges
 Width: 27" – 36"
 Height: 84" – 120"
 Depth: 5-1/2" – 30"

- Matching specie interior is not available over 96" high. White Birch UV topcoated material will be used.
- When height changes, upper opening height changes. Lower opening height fixed at 56".
- 84" – 90" high has six shelves.
- 90-1/16" – 96" high has seven shelves.
- 96-1/16" – 108" high has eight shelves.
- 108-1/16" – 120" high has nine shelves.

84" High	90" High	96" High
UCD2784	UCD2790	UCD2796
UCD3084	UCD3090	UCD3096
UCD3384	UCD3390	UCD3396
UCD3684	UCD3690	UCD3696

UCDW/CSUCW - Utility Cabinet Wall Height Top Section

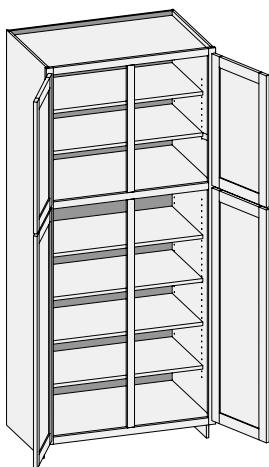


Custom Size Ranges
Single Door Width: 12" – 24"
Butt Door Width: 24" – 36"
Height: 84" – 120"
Depth: 5-1/2" – 30"

- Top section aligns with corresponding wall cabinet height as follows:
84" high – 30" wall cabinets.
90" high – 36" wall cabinets.
96" high – 42" wall cabinets.
- Matching specie interior is not available over 96" high. White Birch UV topcoated material will be used.
- When cabinet height changes, top opening height changes accordingly. Lower opening height is fixed at 48-1/2".
- 84" – 90" high has six shelves.
- 90-1/16" – 96" high has seven shelves.
- 96-1/16" – 108" high has eight shelves.
- 108-1/16" – 120" high has nine shelves.
- Specify single or butt doors on custom size cabinets 24" wide.

Single Door Cabinet – 24" Deep			Butt Door Cabinet – 24" Deep		
84" High	90" High	96" High	84" High	90" High	96" High
UCDW1584	UCDW1590	UCDW1596	UCDW2484BD	UCDW2490BD	UCDW2496BD
UCDW1884	UCDW1890	UCDW1896	UCDW2784BD	UCDW2790BD	UCDW2796BD
UCDW2184	UCDW2190	UCDW2196	UCDW3084BD	UCDW3090BD	UCDW3096BD
UCDW2484	UCDW2490	UCDW2496	UCDW3384BD	UCDW3390BD	UCDW3396BD
			UCDW3684BD	UCDW3690BD	UCDW3696BD

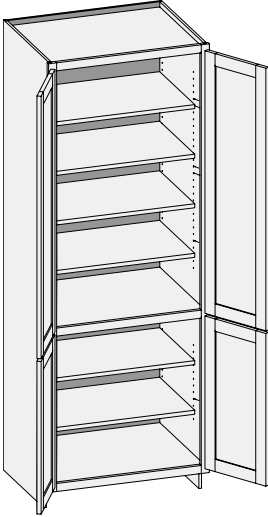
CSUCWCS - Utility Cabinet Wall Height Top Section w/Center Stile



Custom Size Ranges
Width: 27" – 36"
Height: 84" – 120"
Depth: 5-1/2" – 30"

- Top section aligns with corresponding wall cabinet height as follows:
84" high – 30" wall cabinets.
90" high – 36" wall cabinets.
96" high – 42" wall cabinets.
- Matching specie interior is not available over 96" high. White Birch UV topcoated material will be used.
- When cabinet height changes, top opening height changes accordingly. Lower opening height is fixed at 48-1/2".
- 84" – 90" high has six shelves.
- 90-1/16" – 96" high has seven shelves.
- 96-1/16" – 108" high has eight shelves.
- 108-1/16" – 120" high has nine shelves.

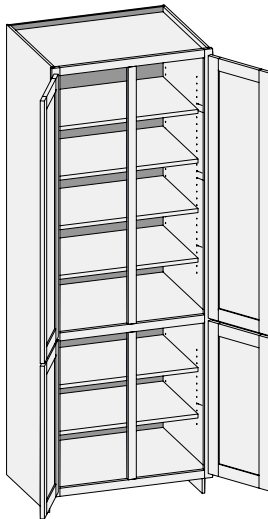
Options Key: EXP = Exposed End(s) FL = Flush End(s) FUE = Flush Unexposed End(s) SS = Shaped Side PFD = Prep for False Door
EXT = Extended Stile(s) FT = Flush Toe LTP = Loose Toe Platform SBR = Shaped Bottom Rail LE = Leg Extension OS = Omit Shelving
NSH = No Shelf Holes WS = Solid Wood Shelves MI = Matching Interior PTB = Plywood Toe Backer

UCDR/CSUCR - Utility Cabinet Reverse


Custom Size Ranges
 Single Door Width: 12" – 24"
 Butt Door Width: 24" – 36"
 Height: 84" – 120"
 Depth: 5-1/2" – 30"

- Matching specie interior is not available over 96" high. White Birch UV topcoated material will be used.
- When height changes, upper opening height changes. Lower opening height fixed at 27-1/2".
- 84" – 90" high has six shelves.
- 90-1/16" – 96" high has seven shelves.
- 96-1/16" – 108" high has eight shelves.
- 108-1/16" – 120" high has nine shelves.
- Specify single or butt doors on custom size cabinets 24" wide.

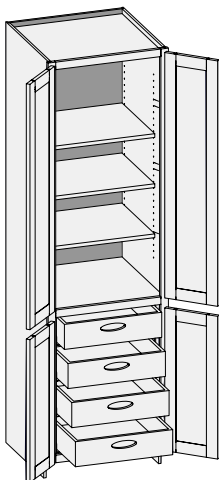
Single Door Cabinet – 24" Deep			Butt Door Cabinet – 24" Deep		
84" High	90" High	96" High	84" High	90" High	96" High
UCDR1584	UCDR1590	UCDR1596	UCDR2484BD	UCDR2490BD	UCDR2496BD
UCDR1884	UCDR1890	UCDR1896	UCDR2784BD	UCDR2790BD	UCDR2796BD
UCDR2184	UCDR2190	UCDR2196	UCDR3084BD	UCDR3090BD	UCDR3096BD
UCDR2484	UCDR2490	UCDR2496	UCDR3384BD	UCDR3390BD	UCDR3396BD
			UCDR3684BD	UCDR3690BD	UCDR3696BD

CSUCRCS - Utility Cabinet Reverse w/Center Stile


Custom Size Ranges
 Width: 27" – 36"
 Height: 84" – 120"
 Depth: 5-1/2" – 30"

- Matching specie interior is not available over 96" high. White Birch UV topcoated material will be used.
- When height changes, upper opening height changes. Lower opening height fixed at 27-1/2".
- 84" – 90" high has six shelves.
- 90-1/16" – 96" high has seven shelves.
- 96-1/16" – 108" high has eight shelves.
- 108-1/16" – 120" high has nine shelves.

UCDRRO/CSUCRRO - Utility Cabinet Deep Reverse Roll-Out

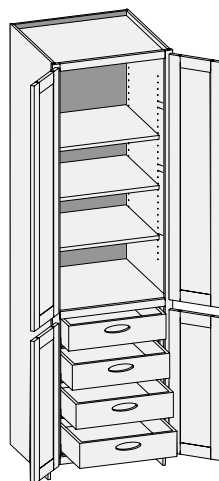


Custom Size Ranges
Single Door Width: 12" – 24"
Butt Door Width: 24" – 36"
Height: 84" – 120"
Depth: 12", 15", 18",
21", 24", 27", 30"

- Units are configured with four 5" high drawer boxes. Interior panels are pre-drilled for drawer slide placement and installation.
- Roll-out drawers include hand pulls. Specify Standard, Circle or Ellipse (shown) pull.
- Matching specie interior is not available over 96" high. White Birch UV topcoated material will be used.
- When height changes, upper opening height changes. Lower opening height fixed at 27-1/2".
- 84" – 90" high has four shelves.
- 90-1/16" – 96" high has five shelves.
- 96 1/16" – 108" high has six shelves.
- 108-1/16" – 120" has seven shelves.
- Specify single or butt doors on custom size cabinets 24" wide.

Single Door Cabinet –24" Deep			Butt Door Cabinet – 24" Deep		
84" High	90" High	96" High	84" High	90" High	96" High
UCDRRO1584	UCDRRO1590	UCDRRO1596	UCDRRO2484BD	UCDRRO2490BD	UCDRRO2496BD
UCDRRO1884	UCDRRO1890	UCDRRO1896	UCDRRO2784BD	UCDRRO2790BD	UCDRRO2796BD
UCDRRO2184	UCDRRO2190	UCDRRO2196	UCDRRO3084BD	UCDRRO3090BD	UCDRRO3096BD
UCDRRO2484	UCDRRO2490	UCDRRO2496	UCDRRO3384BD	UCDRRO3390BD	UCDRRO3396BD
			UCDRRO3684BD	UCDRRO3690BD	UCDRRO3696BD

UCDRROI/CSUCRROI - Utility Cabinet Deep Reverse Roll-Out Inset



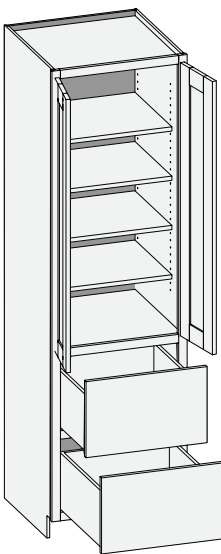
Custom Size Ranges
Single Door Width: 15" – 36"
Butt Door Width: 24" – 36"
Height: 84" – 120"
Depth: 12", 15", 18",
21", 24", 27", 30"

- Specifically designed for inset applications.
- Units are configured with four 5" high drawer boxes.
- Interior panels are pre-drilled for drawer slide placement and installation.
- Roll-out drawers include hand pulls. Specify Standard, Circle or Ellipse (shown) pull.
- Matching specie interior is not available over 96" high. White Birch UV topcoated material will be used.
- When height changes, upper opening height changes. Lower opening height fixed at 27-1/2".
- 84" – 90" high has four shelves.
- 90-1/16" – 96" high has five shelves.
- 96 1/16" – 108" high has six shelves.
- 108-1/16" – 120" has seven shelves.
- Specify single or butt doors on custom size cabinets 24" wide.

Single Door Cabinet –24" Deep			Butt Door Cabinet –24" Deep		
84" High	90" High	96" High	84" High	90" High	96" High
UCDRROI1584	UCDRROI1590	UCDRROI1596	UCDRROI2484BD	UCDRROI2490BD	UCDRROI2496BD
UCDRROI1884	UCDRROI1890	UCDRROI1896	UCDRROI2784BD	UCDRROI2790BD	UCDRROI2796BD
UCDRROI2184	UCDRROI2190	UCDRROI2196	UCDRROI3084BD	UCDRROI3090BD	UCDRROI3096BD
UCDRROI2484	UCDRROI2490	UCDRROI2496	UCDRROI3384BD	UCDRROI3390BD	UCDRROI3396BD
			UCDRROI3684BD	UCDRROI3690BD	UCDRROI3696BD

Options Key: EXP = Exposed End(s) FL = Flush End(s) FUE = Flush Unexposed End(s) SS = Shaped Side PFD = Prep for False Door
EXT = Extended Stile(s) FT = Flush Toe LTP = Loose Toe Platform SBR = Shaped Bottom Rail LE = Leg Extension OS = Omit Shelving
NSH = No Shelf Holes WS = Solid Wood Shelves MI = Matching Interior PTB = Plywood Toe Backer

U2D/CSU2D - Utility Two Drawer

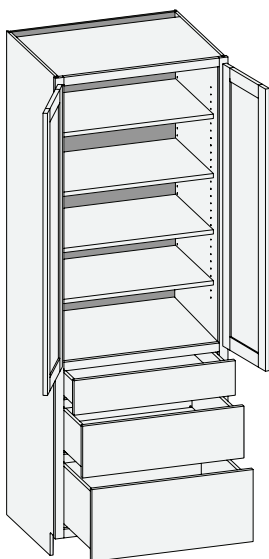


Custom Size Ranges
 Single Door Width: 12" – 24"
 Butt Door Width: 24" – 36"
 Height: 84" – 120"
 Depth: 12", 15", 18", 21", 24",
 27", 30"

- Matching specie interior is not available over 96" high. White Birch UV topcoated material will be used.
- When height changes, upper opening height changes.
- Lower drawer section aligns with 34-1/2" high base cabinets. Drawer front heights are equal.
- 84" – 90" high has four shelves.
- 90-1/16" – 96" high has five shelves.
- 96-1/16" – 108" high has six shelves.
- 108-1/16" 120" high has seven shelves.
- Specify single or butt doors on custom size cabinets 24" wide.

Single Door Cabinet – 24" Deep			Butt Door Cabinet – 24" Deep		
84" High	90" High	96" High	84" High	90" High	96" High
U2D1884	U2D1890	U2D1896	U2D2484BD	U2D2490BD	U2D2496BD
U2D2184	U2D2190	U2D2196	U2D2784BD	U2D2790BD	U2D2796BD
U2D2484	U2D2490	U2D2496	U2D3084BD	U2D3090BD	U2D3096BD
			U2D3384BD	U2D3390BD	U2D3396BD
			U2D3684BD	U2D3690BD	U2D3696BD

U3D/CSU3D - Utility Three Drawer



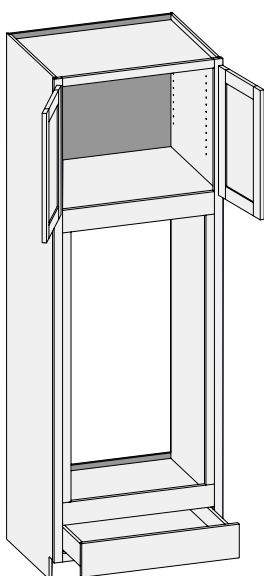
Custom Size Ranges
 Single Door Width: 12" – 24"
 Butt Door Width: 24" – 36"
 Height: 84" – 120"
 Depth: 12", 15", 18",
 21", 24", 27", 30"

- Matching specie interior is not available over 96" high. White Birch UV topcoated material will be used.
- When height changes, upper opening height changes.
- Lower drawer section aligns with 34-1/2" high base cabinets.
- 84" – 90" high has four shelves.
- 90-1/16" – 96" high has five shelves.
- 96-1/16" – 108" high has eight shelves.
- 108-1/16" – 120" high has nine shelves.
- Specify single or butt doors on custom size cabinets 24" wide.

Single Door Cabinet – 24" Deep			Butt Door Cabinet – 24" Deep		
84" High	90" High	96" High	84" High	90" High	96" High
U3D1884	U3D1890	U3D1896	U3D2484BD	U3D2490BD	U3D2496BD
U3D2184	U3D2190	U3D2196			
U3D2484	U3D2490	U3D2496			

Options Key: EXP = Exposed End(s) FL = Flush End(s) FUE = Flush Unexposed End(s) SS = Shaped Side PFD = Prep for False Door
 EXT = Extended Stile(s) FT = Flush Toe LTP = Loose Toe Platform SBR = Shaped Bottom Rail LE = Leg Extension OS = Omit Shelving
 NSH = No Shelf Holes WS = Solid Wood Shelves MI = Matching Interior PTB = Plywood Toe Backer

ODA/CSODA - Oven Double Opening Type A w/Butt Doors



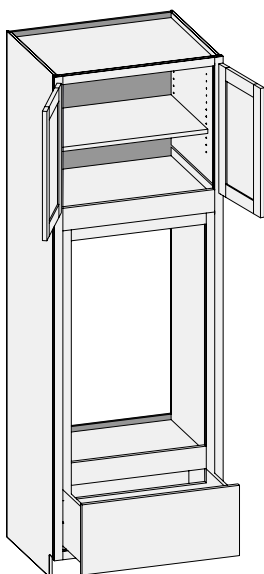
4" Middle Rails

Custom Size Ranges
Width: 27" – 36"
Height: 84" – 120"
Depth: 24", 27", 30"

- Oven opening is 48" high, width is 6" less than cabinet width.
- Oven opening is trimmable up to 5" in height and 3" in width.
- Oven opening is 14-1/2" above the floor, trimmable to 12".
- Matching specie interior is not available over 96" high. White Birch UV topcoated material will be used.
- When height changes, upper opening height changes. Lower and middle opening heights fixed.
- 84" – 95" high has one shelf.
- 95-1/16" – 102" high has two shelves.
- 102-1/16" – 120" high has three shelves.
- ODA with center stile and two functional side by side drawers below oven opening available. Order using CSODACS.

24" Deep		
84" High	90" High	96" High
ODA2784BD	ODA2790BD	ODA2796BD
ODA3084BD	ODA3090BD	ODA3096BD
ODA3384BD	ODA3390BD	ODA3396BD

ODB/CSODB - Oven Double Opening Type B w/Butt Doors



4" Middle Rails

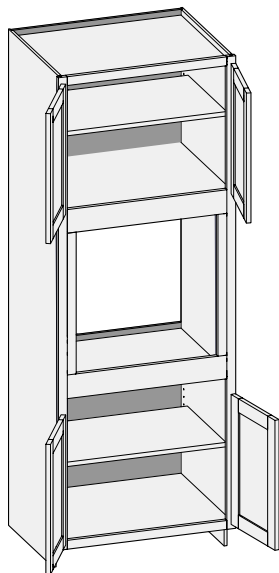
Custom Size Ranges
Width: 27" – 36"
Height: 84" – 120"
Depth: 24", 27", 30"

- Oven opening is 39-1/2" high, width is 6" less than cabinet width.
- Oven opening is trimmable up to 5" in height and 3" in width.
- Oven opening is 21" above the floor, trimmable to 18-1/2".
- Matching specie interior is not available over 96" high. White Birch UV topcoated material will be used.
- When height changes, upper opening height changes. Lower and middle opening heights fixed.
- 84" – 95" high has one shelf.
- 95-1/16" – 102" high has two shelves.
- 102-1/16" – 120" high has three shelves.
- ODB with center stile and two functional side by side drawers below oven opening is available. Order using CSODBCS.

24" Deep		
84" High	90" High	96" High
ODB3084BD	ODB3090BD	ODB3096BD
ODB3384BD	ODB3390BD	ODB3396BD

Options Key: EXP = Exposed End(s) FL = Flush End(s) FUE = Flush Unexposed End(s) SS = Shaped Side PFD = Prep for False Door
EXT = Extended Stile(s) FT = Flush Toe LTP = Loose Toe Platform SBR = Shaped Bottom Rail LE = Leg Extension OS = Omit Shelving
NSH = No Shelf Holes WS = Solid Wood Shelves MI = Matching Interior PTB = Plywood Toe Backer

CSOS - Oven Single Opening w/Butt Doors

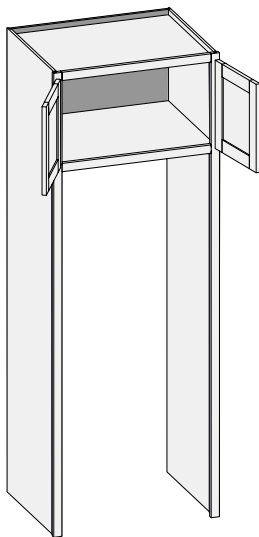


4" Middle Rails

Custom Size Ranges
 Width: 27" – 36"
 Height: 84" – 120"
 Depth: 24" – 30"

- Oven opening is 24" high, width is 6" less than cabinet width.
- Oven opening is trimmable up to 5" in height and 3" in width.
- Oven opening is 33-1/2" above the floor, trimmable to 31".
- Matching specie interior is not available over 96" high. White Birch UV topcoated material will be used.
- When height changes, upper opening height changes. Lower and middle opening heights fixed.
- Lower opening is fixed at 24".
- 84" – 89" high has two shelves.
- 89-1/16" – 96" high has three shelves.
- 96-1/16" – 108" high has four shelves.
- 108-1/16" – 120" high has five shelves.
- OS with center stile in top and bottom opening is available. Order using CSOSCS.

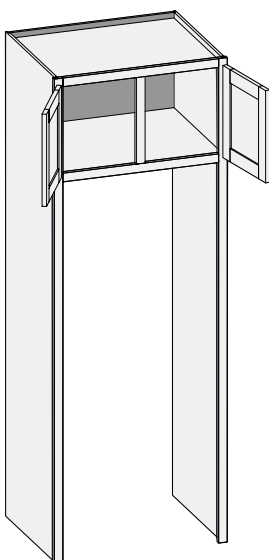
CSRTB - Refrigerator Tall Both Sides w/Butt Doors



Custom Size Ranges
 Width: 30" – 36"
 Height: 84" – 120"
 Depth: 8" – 30"

- Middle numbers in the cabinet code refer to the height of the wall cabinet (example: RTB331284 has a 12" high upper cabinet).
- Matching specie interior is not available over 96" high. White Birch UV topcoated material will be used.
- When ordering custom size refrigerator cabinets specify top cabinet height.
- 21" – 24" high upper cabinets have one shelf.
- 24-1/16" – 27" high upper cabinet has two shelves.
- Unavailable options: SS, FT, SBR, LE, LTP.

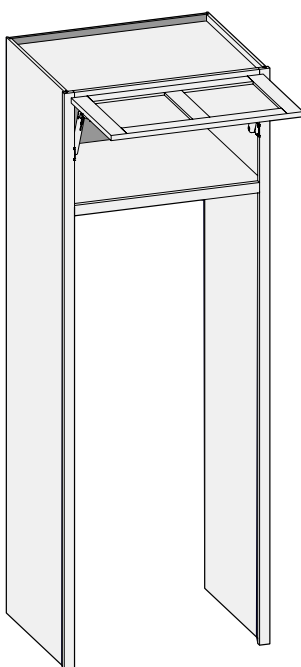
CSRTBCS - Refrigerator Tall Both Sides w/Center Stile



Custom Size Ranges
Width: 30" – 51"
Height: 84" – 120"
Depth: 8" – 30"

- Middle numbers in the cabinet code refer to the height of the wall cabinet (example: RTB331284 has a 12" high upper cabinet).
- Matching specie interior is not available over 96" high. White Birch UV topcoated material will be used.
- When ordering custom size refrigerator cabinets specify top cabinet height.
- 21" – 24" high upper cabinet has one shelf.
- 24-1/16" – 27" high upper cabinet has two shelves.
- Unavailable Options: SS, FT, SBR, LE, LTP.

CSRTBHKXS - Refrigerator Tall Both w/HK-XS Lift System

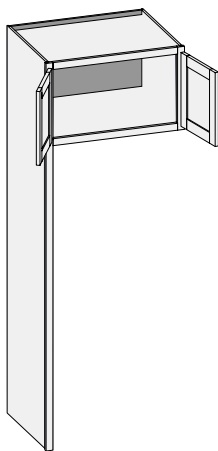


Custom Size Ranges
Width: 30" – 39"
Height: 84" – 120"
Depth: 24" – 30"

- Preconfigured units include HK-XS Series lift system hardware and Blum COMPACT hinges.
- Door weight and design determine the strength and quantity of lift mechanisms provided.
- Cabinet width 15" – 24" are single panel door designs. 24-1/16" – 36" are two panels side by side. Upcharges for 2 panel door applies.
- Rabbeted edge profiles and inset/prefit options are not available.
- Matching specie interior is not available over 96" high. White Birch UV topcoated material will be used.
- When ordering custom size refrigerator cabinets specify top cabinet height.
- 12" – 18" high upper cabinet has no shelves.
- 18-1/16" – 24" high upper cabinet has one shelf.
- Unavailable Options: SS, FT, SBR, LE, LTP.

Options Key: EXP = Exposed End(s) FL = Flush End(s) FUE = Flush Unexposed End(s) SS = Shaped Side PFD = Prep for False Door
EXT = Extended Stile(s) FT = Flush Toe LTP = Loose Toe Platform SBR = Shaped Bottom Rail LE = Leg Extension OS = Omit Shelving
NSH = No Shelf Holes WS = Solid Wood Shelves MI = Matching Interior PTB = Plywood Toe Backer

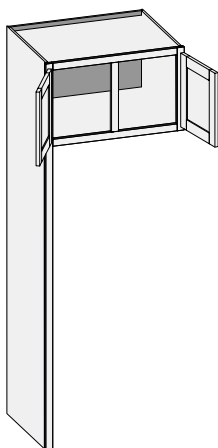
CSRTL - Refrigerator Tall Left w/Butt Doors



Custom Size Ranges
 Width: 30" – 36"
 Height: 84" – 120"
 Depth: 8" – 30"

- Middle numbers in the cabinet code refer to the height of the wall cabinet (example: RTB331284 has a 12" high upper cabinet).
- Matching specie interior is not available over 96" high. White Birch UV topcoated material will be used.
- When ordering custom size refrigerator cabinets specify top cabinet height.
- 21" – 24" high upper cabinets have one shelf.
- 24-1/16" – 27" high upper cabinet has two shelves.
- Unavailable Options: SS, FT, SBR, LE, LTP.

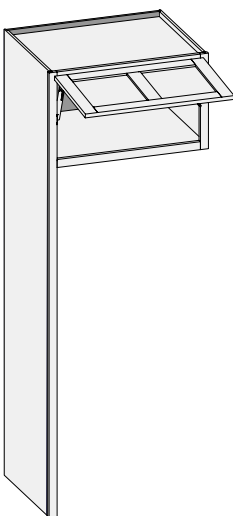
CSRTLCS - Refrigerator Tall Left w/Center Stile



Custom Size Ranges
 Width: 30" – 51"
 Height: 84" – 120"
 Depth: 8" – 30"

- Middle numbers in the cabinet code refer to the height of the wall cabinet (example: RTB331284 has a 12" high upper cabinet).
- Matching specie interior is not available over 96" high. White Birch UV topcoated material will be used.
- When ordering custom size refrigerator cabinets specify top cabinet height.
- 21" – 24" high upper cabinets have one shelf.
- 24-1/16" – 27" high upper cabinet has two shelves.
- Unavailable Options: SS, FT, SBR, LE, LTP.

RTLHKXS/CSRTLHKXS - Refrigerator Tall Left w/HK-XS Lift System

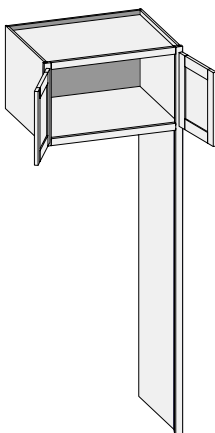


Custom Size Ranges
 Width: 30" – 39"
 Height: 84" – 120"
 Depth: 24" – 30"

- Preconfigured units include HK-XS Series lift system hardware and Blum COMPACT hinges.
- Door weight and design determine the strength and quantity of lift mechanisms provided.
- Cabinet width 15" – 24" are single panel door designs. 24-1/16" – 36" are two panels side by side. Upcharges for 2 panel door applies.
- Rabbeted edge profiles and inset/prefit options are not available.
- Middle numbers in the cabinet code refer to the height of the wall cabinet (example: RTLHKXS331284 has a 12" high upper cabinet).
- Matching specie interior is not available over 96" high. White Birch UV topcoated material will be used.
- When ordering custom size refrigerator cabinets specify top cabinet height.
- 12" – 18" high upper cabinet has no shelves.
- 18-1/16" – 24" high upper cabinet has one shelf.
- Unavailable Options: SS, FT, SBR, LE, LTP.

Options Key: EXP = Exposed End(s) FL = Flush End(s) FUE = Flush Unexposed End(s) SS = Shaped Side PFD = Prep for False Door
 EXT = Extended Stile(s) FT = Flush Toe LTP = Loose Toe Platform SBR = Shaped Bottom Rail LE = Leg Extension OS = Omit Shelving
 NSH = No Shelf Holes WS = Solid Wood Shelves MI = Matching Interior PTB = Plywood Toe Backer

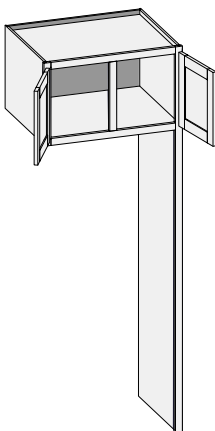
RTR/CSRTR - Refrigerator Tall Right w/Butt Doors



Custom Size Ranges
Width: 30" – 36"
Height: 84" – 120"
Depth: 8" – 30"

- Middle numbers in the cabinet code refer to the height of the wall cabinet (example: RTB331284 has a 12" high upper cabinet).
- Matching specie interior is not available over 96" high. White Birch UV topcoated material will be used.
- When ordering custom size refrigerator cabinets specify top cabinet height.
- 21" – 24" high upper cabinets have one shelf.
- 24-1/16" – 27" high upper cabinet has two shelves.
- Unavailable Options: SS, FT, SBR, LE, LTP.

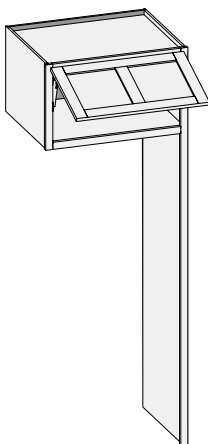
RTR/CSRTRCS - Refrigerator Tall Right w/Center Stile



Custom Size Ranges
Width: 30" – 51"
Height: 84" – 120"
Depth: 8" – 30"

- Middle numbers in the cabinet code refer to the height of the wall cabinet (example: RTB331284 has a 12" high upper cabinet).
- Matching specie interior is not available over 96" high. White Birch UV topcoated material will be used.
- When ordering custom size refrigerator cabinets specify top cabinet height.
- 21" – 24" high upper cabinets have one shelf.
- 24-1/16" – 27" high upper cabinet has two shelves.
- Unavailable Options: SS, FT, SBR, LE, LTP.

RTRHKXS/CSRTRHKXS - Refrigerator Tall Right w/HK-XS Lift System

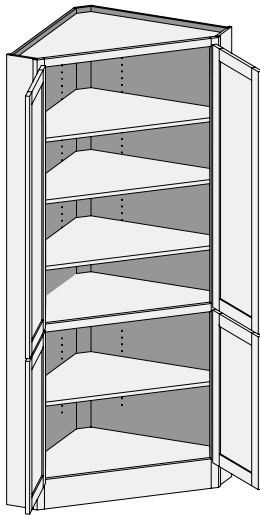


Custom Size Ranges
Width: 30" – 39"
Height: 84" – 120"
Depth: 24" – 30"

- Preconfigured units include HK-XS Series lift system hardware and Blum COMPACT hinges.
- Door weight and design determine the strength and quantity of lift mechanisms provided.
- Cabinet width 15" – 24" are single panel door designs. 24-1/16" – 36" are two panels side by side. Upcharges for 2 panel door applies.
- Rabbeted edge profiles and inset/prefit options are not available.
- Middle numbers in the cabinet code refer to the height of the wall cabinet (example: RTRHKXS331284 has a 12" high upper cabinet).
- Matching specie interior is not available over 96" high. White Birch UV topcoated material will be used.
- When ordering custom size refrigerator cabinets specify top cabinet height.
- 12" – 18" high upper cabinet has no shelves.
- 18-1/16" – 24" high upper cabinet has one shelf.
- Unavailable Options: SS, FT, SBR, LE, LTP.

Options Key: EXP = Exposed End(s) FL = Flush End(s) FUE = Flush Unexposed End(s) SS = Shaped Side PFD = Prep for False Door
EXT = Extended Stile(s) FT = Flush Toe LTP = Loose Toe Platform SBR = Shaped Bottom Rail LE = Leg Extension OS = Omit Shelving
NSH = No Shelf Holes WS = Solid Wood Shelves MI = Matching Interior PTB = Plywood Toe Backer

TCH/CSTCH - Tall Corner Hutch w/Butt Doors

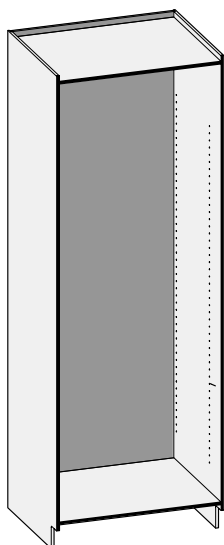


25-7/16" Face
26-9/16" Frame

Custom Size Ranges
Width: 24", 27", 30"
Height: 84" – 96"
Depth: 24", 27", 30"

- 5-1/2" Flush Toe standard.
- Lower section aligns with 34-1/2" high base cabinets.
- When height changes, upper opening height changes. Lower opening height fixed at 27-1/2".
- Cabinet is designed with Flush Toe standard.
- Unavailable Options: FUE, SS, PFD, LE, LTP, WS, EXT, SBR.

CSCO - Case Only



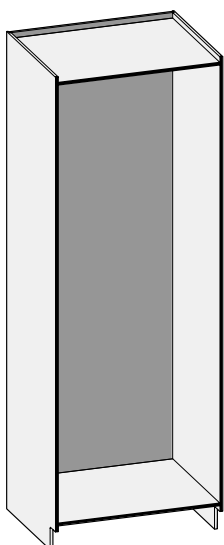
Custom Size Ranges
Width: 9" – 48"
Height: 10" – 120"
Depth: 5-1/2" – 30"



Loose fixed floor kits

- Customizable cabinet case for custom base and tall applications.
- No front frame included – case only. Order custom size front frame, shelves, doors, drawer fronts and drawer boxes separately.
- Sides are machined with shelf holes.
- Loose fixed floor kits are sized to fit between sides. Plywood cleats included to mount floors as needed behind front frame openings. Floors include pre-inserted splines. Specify quantity of fixed floor kits per cabinet.
- Matching specie interior is not available over 96" high. White Birch UV topcoated material will be used.
- Custom quantities of fixed floor kits are available. Specify the quantity per cabinet.
- Specify shelf quantity per cabinet.
- Use Conestoga's online ordering system, Con-Nex or Conestoga order entry for pricing.

CSCONH - Case Only No Shelf Holes



Custom Size Ranges
Width: 9" – 48"
Height: 10" – 120"
Depth: 5-1/2" – 30"



Loose fixed floor kits

- Customizable cabinet case for custom base and tall applications.
- No front frame included – case only. Order custom size front frame, doors, drawer fronts and drawer boxes separately.
- Loose fixed floor kits are sized to fit between sides. Plywood cleats included to mount floors as needed behind front frame openings. Floors include pre-inserted splines. Specify quantity of fixed floor kits per cabinet.
- Matching specie interior is not available over 96" high. White Birch UV topcoated material will be used.
- Use Conestoga's online ordering system, Con-Nex or Conestoga order entry for pricing.

Options Key: EXP = Exposed End(s) FL = Flush End(s) FUE = Flush Unexposed End(s) SS = Shaped Side PFD = Prep for False Door
EXT = Extended Stile(s) FT = Flush Toe LTP = Loose Toe Platform SBR = Shaped Bottom Rail LE = Leg Extension OS = Omit Shelving
NSH = No Shelf Holes WS = Solid Wood Shelves MI = Matching Interior PTB = Plywood Toe Backer