

Advantage Vanity Cabinet Standard Features and Options

The information described below discusses some of the features and options of Advantage Vanity cabinets. Customers have the option to omit these standard features as well as add other design options, which can be quickly referenced at the bottom of each page in the Vanity Cabinet Section labeled "Vanity Options Key". For more detailed descriptions and images of all available options see Options, Section 12 within this manual. The options described below are available on all Vanity cabinets unless specifically noted next to the individual cabinet as **Unavailable Options**.

Standard Shelving & Omit Shelving (OS) – 3/4" thick White Birch plywood shelving with a durable UV topcoat is standard with any Vanity cabinet with shelves. If shelving is not desired within a specific cabinet, indicate **Omit Shelving** when ordering.

5mm Shelf Holes & No Shelf Holes (NSH) – Pre-drilled 5mm shelf holes on 32mm centers are a standard feature of all Vanity cabinets with shelves. If shelf holes are not desired, indicate **No Shelf Holes** when ordering. **Note:** If shelving and shelf holes are not desired, both No Shelf Holes and Omit Shelving must be specified when ordering.

Cabinet Case Material Options – Most optional cabinet case materials will match the door, drawer front and face frame specie and are available with Vanity cabinets produced in standard Advantage species.

- **Exposed Ends (EXP)** – Matching specie veneer on the exterior face of 1/2" thick plywood cabinet sides. The interior of plywood Exposed Ends will remain as White Birch.
- **Flush Ends (FL)** – Matching specie veneer on the exterior face of 3/4" thick plywood cabinet sides. The interior of plywood Flush Ends will remain as White Birch.
- **Flush Unexposed Ends (FUE)** – Natural Birch veneer on the exterior face of the 3/4" thick flush plywood cabinet sides. Designed to be utilized when extra support is desired from non-exposed flush end panels. The interior of the plywood Flush Unexposed Ends will remain as White Birch.
- **Matching Interior (MI)** – Matching specie veneer is available on all internal cabinet parts. The Matching Interior Option is not available in combination with the Solid Wood Shelf Upgrade Option.

Solid Wood Shelf Upgrade (WS) – The **Solid Wood Shelf Upgrade** replaces the standard White Birch plywood shelving with solid wood Natural Birch shelving. Solid Wood Shelving is 3/4" thick with a bullnosed front edge and is prefinished with a UV topcoat. The Solid Wood Shelf Upgrade Option is not available in combination with the Matching Interior Option or when Vanity cabinets are deeper than 24". Solid shelving available up to 18" deep.

Dust Top (DT) - The **Dust Top Option** replaces the front and back strips at the top of the Vanity cabinet with a 1/2" thick full depth Birch plywood top. The Dust Top is machined on the right and left sides to slide into the grooves near the top of the side panels, offering additional stability to the cabinet.

Extended Stiles (EXT) – The **Extended Stile Option** provides additional width on the left, right or both stiles of the front frame. Up to 3" of additional material provides clearance between the cabinet and adjacent walls or other cabinetry allowing cabinet doors and drawers to fully open without interference. Extended stiles also provide the opportunity to scribe the frame to the wall contours during the installation process.

Leg Extension (LE) – The **Leg Extension Option** can be added to the left, right or both stiles of the front frame. When selected, the Leg Extension Option omits the toe kick from the cabinet and extends the front frame stile(s) to the floor creating a closed end panel to the cabinet.

Prep for False Door Side (PFD) – The **Prep for False Door Side Option** maintains the overall front frame width ordered, but relocates the cabinet side panel, moving it inward by 13/16" for each Prep for False Door Side selected. This creates a 3/4" reveal behind the 1-1/2" wide front frame stile to accommodate the decorative door end panel. The Prep for False Door Side Option can be ordered for the left, right or both cabinet sides. All cabinet components are automatically resized accordingly when the Prep for False Door Side Option is selected.

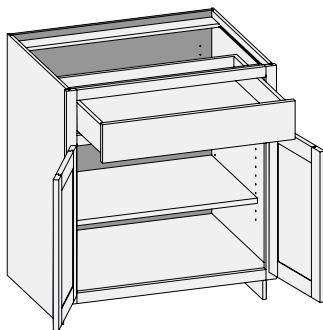
Square Toe Kick Notch (STN) – Standard Vanity cabinet side panels have a 3-1/2" deep x 4" high toe kick notch with a 1/4" radius at the intersecting corner. This corner can be squared with the **Square Toe Notch Option** which makes the corner notch 90° to aid in toe board installation.

Flush Toe (FT) – When selected, the **Flush Toe Option** replaces the standard recessed toe kick notches in both side panels with a 5-1/2" bottom rail on the front frame.

Shaped Bottom Rail (SBR) – The **Shaped Bottom Rail Option** automatically adds the Flush Toe to the cabinet's front frame. The 5-1/2" wide bottom rail gives customers the choice of 6 decorative shapes on the bottom rail of the Flush Toe, providing a furniture type appearance.

Shaped Side (SS) – The **Shaped Side Option** provides a choice of 4 decorative shapes on the bottom of Exposed Ends or Flush Ends. The Shaped Side Option is available on left, right, or both sides, but is not available in combination with Extended Stiles, Flushed Unexposed Ends or Loose Toe Platform.

Toe Space Side (TSS) – The **Toe Space Side Option** replaces the bottom 4" of the side panel with a recessed toe space on the left, right or both sides of most Vanity cabinets. This option is commonly used on island or peninsula cabinet sides.

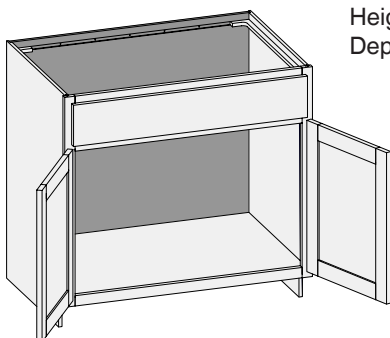
VB/CSB - Vanity Base

Custom Size Ranges
 Width: 12" – 36"
 Height: 31-1/2" – 42"
 Depth: 12", 15", 18", 21",
 24", 27", 30"

- When height changes, lower opening height changes. Upper opening height fixed at 5".
- Specify single or butt doors on custom size cabinets 24" wide.

21" Deep

VB1231.5	VB1234.5
VB1531.5	VB1534.5
VB1831.5	VB1834.5
VB2131.5	VB2134.5

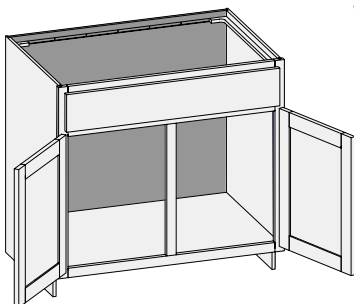
VS/CSBS - Vanity Sink w/Butt Doors

Custom Size Ranges
 Width: 24" – 36"
 Height: 31-1/2" – 42"
 Depth: 18" – 30"

- False drawer front.
- No drawer box, shelf support holes or shelf with sink units.
- When height changes, lower opening height changes. Upper opening height fixed at 5".
- Specify single or butt doors on custom size cabinets 24" wide.

21" Deep

VS2431.5BD	VS2434.5BD
VS2731.5BD	VS2734.5BD
VS3031.5BD	VS3034.5BD
VS3331.5BD	VS3334.5BD
VS3631.5BD	VS3634.5BD

VS/CSBS2D1D - Vanity Sink Two Door One Drawer

Custom Size Ranges
 Width: 27" – 36"
 Height: 31-1/2" – 42"
 Depth: 18" – 30"

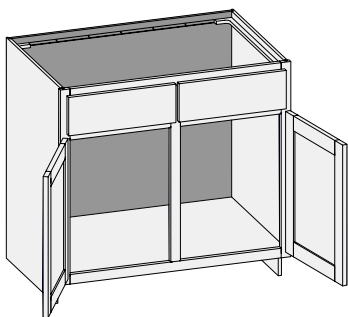
- False drawer front.
- When height changes, lower opening height changes. Upper opening height fixed at 5".

21" Deep

VS3031.5	VS3034.5
VS3331.5	VS3334.5
VS3631.5	VS3634.5

Options Key: EXP = Exposed End(s) FL = Flush End(s) FUE = Flush Unexposed End(s) SS = Shaped Side PFD = Prep for False Door
 EXT = Extended Stile(s) FT = Flush Toe LTP = Loose Toe Platform SBR = Shaped Bottom Rail LE = Leg Extension
 TSS = Toe Space Side OS = Omit Shelving NSH = No Shelf Holes WS = Solid Wood Shelves MI = Matching Interior
 DT = Dust Top NB = Natural Finished Bottom PTB = Plywood Toe Backer

VSX/CSBS2D2D - Vanity Sink Two Door Two Drawer

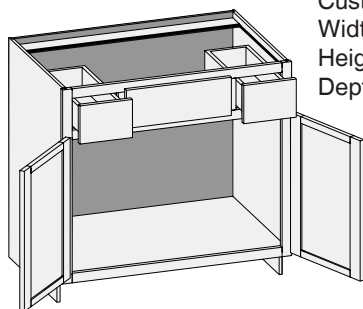


Custom Size Ranges
Width: 30" – 48"
Height: 31-1/2" – 42"
Depth: 18" – 30"

- False drawer fronts.
- When height changes, lower opening height changes. Upper opening height fixed at 5".

21" Deep	
VSX3031.5	VSX3034.5
VSX3631.5	VSX3634.5

VBS/CSVBS - Vanity Base Sink w/Butt Doors

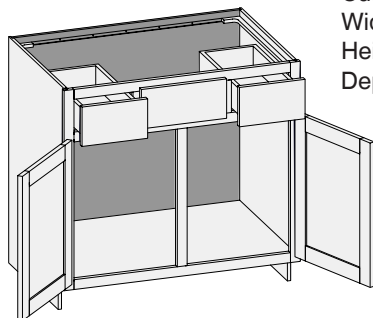


Custom Size Ranges
Width: 36"
Height: 31-1/2" – 42"
Depth: 12", 15", 18", 21"
24", 27", 30"

- False top middle drawer front.
- When height changes, lower opening height changes. Upper opening height fixed at 5".

21" Deep	
VBS3631.5BD	VBS3634.5BD

VBS/CSVBSCS - Vanity Base Sink w/Center Stile

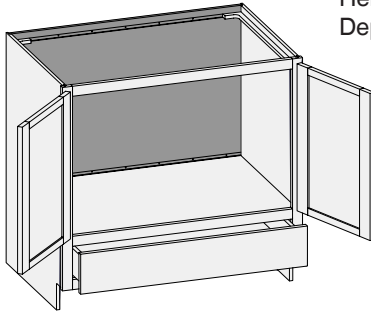


Custom Size Ranges
Width: 36" – 48"
Height: 31-1/2" – 42"
Depth: 12", 15", 18", 21"
24", 27", 30"

- False top middle drawer front.
- When height changes, lower opening height changes. Upper opening height fixed at 5".
- When width changes, middle opening width changes. Left and right opening widths fixed at 9".

21" Deep	
VBS4231.5	VBS4234.5
VBS4831.5	VBS4834.5

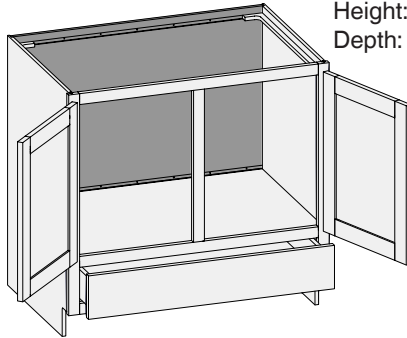
Options Key: EXP = Exposed End(s) FL = Flush End(s) FUE = Flush Unexposed End(s) SS = Shaped Side PFD = Prep for False Door
EXT = Extended Stile(s) FT = Flush Toe LTP = Loose Toe Platform SBR = Shaped Bottom Rail LE = Leg Extension
TSS = Toe Space Side OS = Omit Shelving NSH = No Shelf Holes WS = Solid Wood Shelves MI = Matching Interior
DT = Dust Top NB = Natural Finished Bottom PTB = Plywood Toe Backer

VSRV/CSVSRV - Vanity Sink Reverse w/Butt Doors


Custom Size Ranges
 Width: 24" – 36"
 Height: 31-1/2" – 42"
 Depth: 12", 15", 18", 21"
 24", 27", 30"

- When height changes, top opening height changes. Lower opening height fixed at 5".

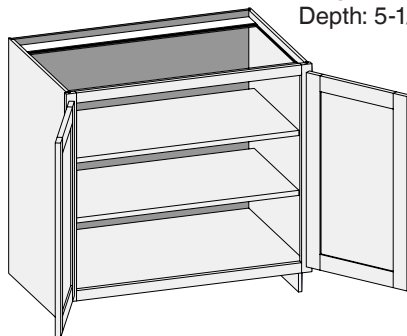
21" Deep	
VSRV2431.5BD	VSRV2434.5BD
VSRV3031.5BD	VSRV3034.5BD
VSRV3631.5BD	VSRV3634.5BD

VSRV/CSVSRVCS - Vanity Sink Reverse w/Center Stile


Custom Size Ranges
 Width: 30" – 36"
 Height: 31-1/2" – 42"
 Depth: 12", 15", 18", 21"
 24", 27", 30"

- When height changes, top opening height changes. Lower opening height fixed at 5".

21" Deep	
VSRV3031.5	VSRV3034.5
VSRV3631.5	VSRV3634.5

VBF/CSBFD - Vanity Base Full


Custom Size Ranges
 Single Door Width: 9" – 24"
 Butt Door Width: 24" – 36"
 Height: 10" – 48"
 Depth: 5-1/2" – 30"

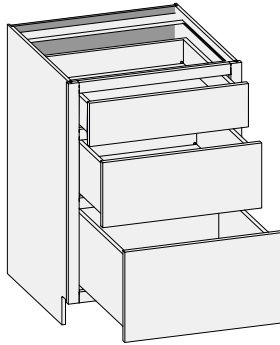
- 10" – 22" high has no shelves.
- 22-1/16" – 28" high has one shelf.
- 28-1/16" – 40" high has two shelves.
- 40-1/16" – 48" high has three shelves.
- Specify single or butt doors on custom size cabinets 24" wide.

Single Door – 21" Deep	
VBF1831.5	VBF1834.5

Butt Door Cabinet – 21" Deep	
VBF2431.5BD	VBF2434.5BD
VBF2731.5BD	VBF2734.5BD
VBF3031.5BD	VBF3034.5BD
VBF3631.5BD	VBF3634.5BD

Options Key: EXP = Exposed End(s) FL = Flush End(s) FUE = Flush Unexposed End(s) SS = Shaped Side PFD = Prep for False Door
 EXT = Extended Stile(s) FT = Flush Toe LTP = Loose Toe Platform SBR = Shaped Bottom Rail LE = Leg Extension
 TSS = Toe Space Side OS = Omit Shelving NSH = No Shelf Holes WS = Solid Wood Shelves MI = Matching Interior
 DT = Dust Top NB = Natural Finished Bottom PTB = Plywood Toe Backer

V3D/CSB3D - Vanity Three Drawer

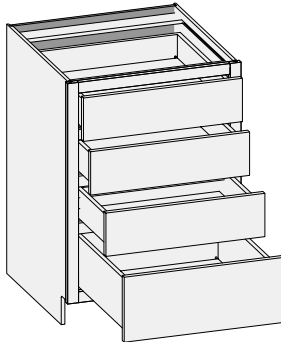


Custom Size Ranges
Width: 12" – 39"
Height: 31-1/2" – 34-1/2"
Depth: 12", 15", 18", 21"
24", 27", 30"

- When height changes, lower opening height changes. Upper and middle opening heights fixed at 5" and 8".

21" Deep	
V3D1231.5	V3D1234.5
V3D1531.5	V3D1534.5
V3D1831.5	V3D1834.5
V3D2131.5	V3D2134.5
V3D2431.5	V3D2434.5

V4D/CSB4D - Vanity Four Drawer



Custom Size Ranges
Width: 12" – 39"
Height: 31-1/2" – 34-1/2"
Depth: 12", 15", 18", 21"
24", 27", 30"

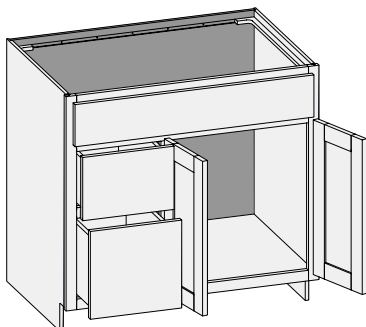
- When height changes, lower opening height changes. Upper opening heights fixed at 5".

21" Deep	
V4D1231.5	V4D1234.5
V4D1531.5	V4D1534.5
V4D1831.5	V4D1834.5
V4D2131.5	V4D2134.5
V4D2431.5	V4D2434.5

Options Key: EXP = Exposed End(s) FL = Flush End(s) FUE = Flush Unexposed End(s) SS = Shaped Side PFD = Prep for False Door
EXT = Extended Stile(s) FT = Flush Toe LTP = Loose Toe Platform SBR = Shaped Bottom Rail LE = Leg Extension
TSS = Toe Space Side OS = Omit Shelving NSH = No Shelf Holes WS = Solid Wood Shelves MI = Matching Interior
DT = Dust Top NB = Natural Finished Bottom PTB = Plywood Toe Backer

VCL/CSVCL - Vanity Combination Left

Custom Size Ranges
 Single Door Width: 24" – 36"
 Butt Door Width: 36" – 48"
 Height: 31-1/2" – 34-1/2"
 Depth: 12", 15", 18", 21"
 7", 30"

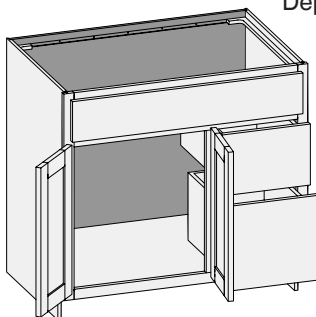


- False top drawer front.
- When height changes, lower opening heights change. Upper and middle opening heights fixed at 5" and 8".
- When width changes, door and false drawer openings change. Lower drawer openings fixed at 12".
- Specify single or butt doors on custom size cabinets 36" wide.
- Doors hinged on center stile require 1/2" overlay hinges for 1-1/4" or 1-3/8" overlays.

Single Door Cabinets – 21" Deep		Butt Door Cabinets – 21" Deep	
VCL3031.5	VCL3034.5	VCL4231.5BD	VCL4234.5BD
VCL3331.5	VCL3334.5	VCL4831.5BD	VCL4834.5BD
VCL3631.5	VCL3634.5		

VCR/CSVCR - Vanity Combination Right

Custom Size Ranges
 Single Door Width: 24" – 36"
 Butt Door Width: 36" – 48"
 Height: 31-1/2" – 34-1/2"
 Depth: 12", 15", 18", 21"
 24", 27", 30"

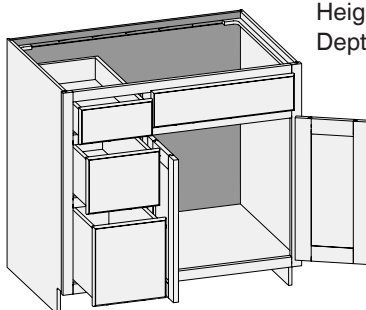


- False top drawer front.
- When height changes, lower opening heights change. Upper and middle opening heights fixed at 5" and 8".
- When width changes, door and false drawer openings change. Lower drawer openings fixed at 12".
- Specify single or butt doors on custom size cabinets 36" wide.
- Doors hinged on center stile require 1/2" overlay hinges for 1-1/4" or 1-3/8" overlays.

Single Door Cabinets – 21" Deep		Butt Door Cabinets – 21" Deep	
VCR3031.5	VCR3034.5	VCR4231.5BD	VCR4234.5BD
VCR3331.5	VCR3334.5	VCR4831.5BD	VCR4834.5BD
VCR3631.5	VCR3634.5		

VC3DL/CSV3DL - Vanity Combo Three Drawer Left

Custom Size Ranges
 Single and Butt Door
 Width: 36" – 48"
 Height: 31-1/2" – 34-1/2"
 Depth: 12", 15", 18", 21"
 24", 27", 30"

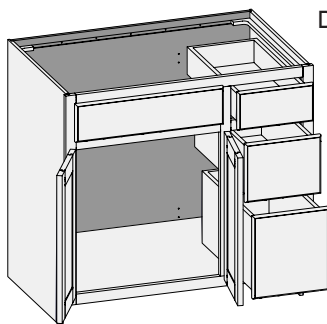


- When width changes, door and false drawer openings remain fixed.
- Doors hinged on center stile require 1/2" overlay hinges for 1-1/4" or 1-3/8" overlays.
- Specify single or butt doors on custom size cabinets.

Single Door Cabinets – 21" Deep		Butt Door Cabinets – 21" Deep	
VC3DL3631.5	VC3DL3634.5	VC3DL3631.5BD	VC3DL3634.5BD
VC3DL3931.5	VC3DL3934.5	VC3DL3931.5BD	VC3DL3934.5BD
VC3DL4231.5	VC3DL4234.5	VC3DL4231.5BD	VC3DL4234.5BD
VC3DL4531.5	VC3DL4534.5	VC3DL4531.5BD	VC3DL4534.5BD
VC3DL4831.5	VC3DL4834.5	VC3DL4831.5BD	VC3DL4834.5BD

Options Key: EXP = Exposed End(s) FL = Flush End(s) FUE = Flush Unexposed End(s) SS = Shaped Side PFD = Prep for False Door
 EXT = Extended Stile(s) FT = Flush Toe LTP = Loose Toe Platform SBR = Shaped Bottom Rail LE = Leg Extension
 TSS = Toe Space Side OS = Omit Shelving NSH = No Shelf Holes WS = Solid Wood Shelves MI = Matching Interior
 DT = Dust Top NB = Natural Finished Bottom PTB = Plywood Toe Backer

VC3DR/CSVC3DR - Vanity Combo Three Drawer Right

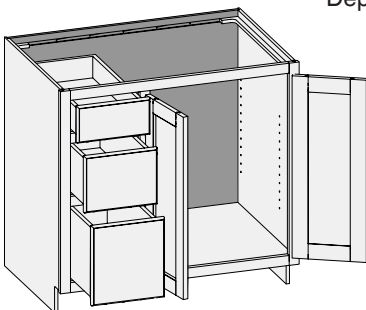


Custom Size Ranges
Single and Butt Door
Width: 36" – 48"
Height: 31-1/2" – 34-1/2"
Depth: 12", 15", 18", 21"
24", 27", 30"

- When width changes, door and false drawer openings remain fixed.
- When height changes, lower opening heights change. Upper and middle opening heights fixed at 5" and 8".
- Doors hinged on center stile require 1/2" overlay hinges for 1-1/4" or 1-3/8" overlays.
- Specify single or butt doors on custom size cabinets.

Single Door Cabinets – 21" Deep		Butt Door Cabinets – 21" Deep	
VC3DR3631.5	VC3DR3634.5	VC3DR3631.5BD	VC3DR3634.5BD
VC3DR3931.5	VC3DR3934.5	VC3DR3931.5BD	VC3DR3934.5BD
VC3DR4231.5	VC3DR4234.5	VC3DR4231.5BD	VC3DR4234.5BD
VC3DR4531.5	VC3DR4534.5	VC3DR4531.5BD	VC3DR4534.5BD
VC3DR4831.5	VC3DR4834.5	VC3DR4831.5BD	VC3DR4834.5BD

VCFD3DL/CSVCFD3DL - Vanity Combo Full Door Three Drawers Left

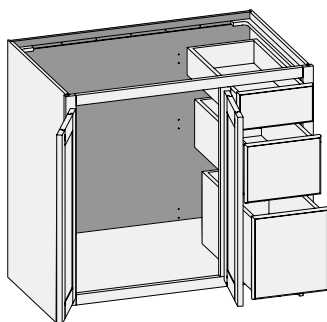


Custom Size Ranges
Single and Butt Door
Width: 36" – 48"
Height: 31-1/2" – 34-1/2"
Depth: 12", 15", 18", 21"
24", 27", 30"

- When width changes, door opening remains fixed.
- When height changes, lower opening heights change. Upper and middle drawer opening heights fixed at 5" and 8".
- Doors hinged on center stile require 1/2" overlay hinges for 1-1/4" or 1-3/8" overlays.
- Specify single or butt doors on custom size cabinets.

Single Door Cabinets – 21" Deep		Butt Door Cabinets – 21" Deep	
VCFD3DL3631.5	VCFD3DL3634.5	VCFD3DL3631.5BD	VCFD3DL3634.5BD
VCFD3DL3931.5	VCFD3DL3934.5	VCFD3DL3931.5BD	VCFD3DL3934.5BD
VCFD3DL4231.5	VCFD3DL4234.5	VCFD3DL4231.5BD	VCFD3DL4234.5BD
VCFD3DL4531.5	VCFD3DL4534.5	VCFD3DL4531.5BD	VCFD3DL4534.5BD
VCFD3DL4831.5	VCFD3DL4834.5	VCFD3DL4831.5BD	VCFD3DL4834.5BD

VCFD3DR/CSVCFD3DR - Vanity Combo Full Door Three Drawers Right

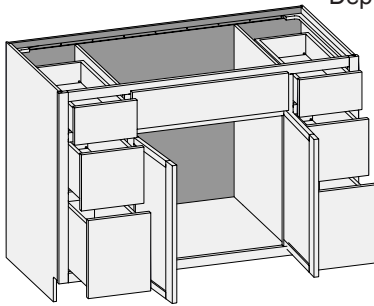


Custom Size Ranges
Single and Butt Door
Width: 36" – 48"
Height: 31-1/2" – 34-1/2"
Depth: 12", 15", 18", 21"
24", 27", 30"

- When width changes, door opening remains fixed.
- When height changes, lower opening heights change. Upper and middle drawer opening heights fixed at 5" and 8".
- Doors hinged on center stile require 1/2" overlay hinges for 1-1/4" or 1-3/8" overlays.
- Specify single or butt doors on custom size cabinets.

Single Door Cabinets – 21" Deep		Butt Doors Cabinets – 21" Deep	
VCFD3DR3631.5	VCFD3DR3634.5	VCFD3DR3631.5BD	VCFD3DR3634.5BD
VCFD3DR3931.5	VCFD3DR3934.5	VCFD3DR3931.5BD	VCFD3DR3934.5BD
VCFD3DR4231.5	VCFD3DR4234.5	VCFD3DR4231.5BD	VCFD3DR4234.5BD
VCFD3DR4531.5	VCFD3DR4534.5	VCFD3DR4531.5BD	VCFD3DR4534.5BD
VCFD3DR4831.5	VCFD3DR4834.5	VCFD3DR4831.5BD	VCFD3DR4834.5BD

Options Key: EXP = Exposed End(s) FL = Flush End(s) FUE = Flush Unexposed End(s) SS = Shaped Side PFD = Prep for False Door
EXT = Extended Stile(s) FT = Flush Toe LTP = Loose Toe Platform SBR = Shaped Bottom Rail LE = Leg Extension
TSS = Toe Space Side OS = Omit Shelving NSH = No Shelf Holes WS = Solid Wood Shelves MI = Matching Interior
DT = Dust Top NB = Natural Finished Bottom PTB = Plywood Toe Backer

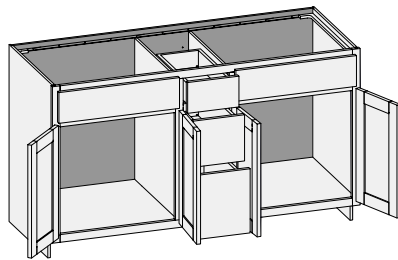
VC6D/CSVC6D - Vanity Combination Six Drawer w/Butt Doors


Custom Size Ranges
 Width: 48" – 72"
 Height: 31-1/2" – 34-1/2"
 Depth: 12", 15", 18", 21"
 24", 27", 30"

- One false top drawer front, two functional top drawers.
- When height changes, lower opening heights change. Upper and middle drawer openings heights fixed at 5" and 8".
- When width changes, door and false drawer front openings change.
- Doors hinged on center stile require 1/2" overlay hinges for 1-1/4" or 1-3/8" overlays.

21" Deep

VC6D4831.5BD	VC6D4834.5BD
VC6D6031.5BD	VC6D6034.5BD

VC3D/CSVC3D - Vanity Combination Three Drawer w/Butt Doors


Custom Size Ranges
 Width: 48" – 72"
 Height: 31-1/2" – 34-1/2"
 Depth: 12", 15", 18", 21"
 24", 27", 30"

- Two false top drawer fronts, one functional top drawer.
- When height changes, lower opening heights change. Upper and middle drawer openings heights fixed at 5" and 8".
- When width changes, door and false drawer front openings change.
- Doors hinged on center stile require 1/2" overlay hinges for 1-1/4" or 1-3/8" overlays.

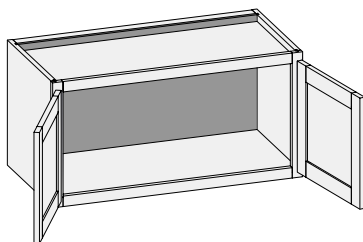
21" Deep

VC3D6031.5BD	VC3D6034.5BD
--------------	--------------

Options Key: EXP = Exposed End(s) FL = Flush End(s) FUE = Flush Unexposed End(s) SS = Shaped Side PFD = Prep for False Door
 EXT = Extended Stile(s) FT = Flush Toe LTP = Loose Toe Platform SBR = Shaped Bottom Rail LE = Leg Extension
 TSS = Toe Space Side OS = Omit Shelving NSH = No Shelf Holes WS = Solid Wood Shelves MI = Matching Interior
 DT = Dust Top NB = Natural Finished Bottom PTB = Plywood Toe Backer

WHV/CSWHV - Wall Hung Vanity

Custom Size Ranges
Single Door Width: 21" – 24"
Butt Door Width: 24" – 36"
Height: 18" – 24"
Depth: 18" – 21"

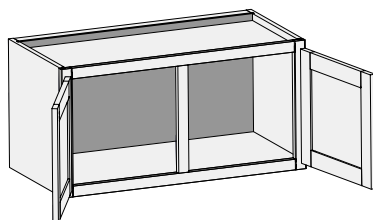


- Includes two precut 2 x 4 installation cleats.
- The load capacity of these cabinets is greatly dependent on the quality of the installation screws and whether the cabinets are secured into the wall studs. If not secured into two or more studs, using high quality installation screws the cabinet may not support the desired weight.
- Conestoga will not be responsible for cabinet failure due to inadequate installation techniques or materials.
- Specify single or butt doors on custom size cabinets 24" wide.

Single Door Cabinets 24" High	Butt Door Cabinets 24" High	
WHV2124	WHV2424BD	WHV3324BD
WHV2424	WHV2724BD	WHV3624BD
	WHV3024BD	

WHV/CSWHVCS - Wall Hung Vanity w/Center Stile

Custom Size Ranges
Width: 27" – 48"
Height: 18" – 24"
Depth: 18" – 21"

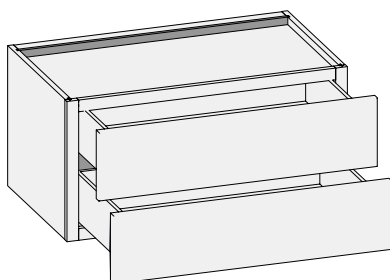


- Includes two precut 2 x 4 installation cleats.
- The load capacity of these cabinets is greatly dependent on the quality of the installation screws and whether the cabinets are secured into the wall studs. If not secured into two or more studs, using high quality installation screws the cabinet may not support the desired weight.
- Conestoga will not be responsible for cabinet failure due to inadequate installation techniques or materials.

24" High	
WHV2724	WHV3924
WHV3024	WHV4224
WHV3324	WHV4524
WHV3624	WHV4824

WHV2D/CSWHV2D - Wall Hung Vanity Two Drawers

Custom Size Ranges
Width: 21" – 36"
Height: 18" – 24"
Depth: 18", 21"

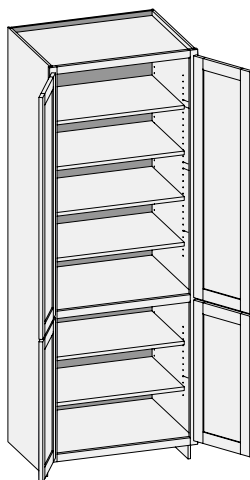


- Drawer boxes are 6" less than the depth of the cabinet to accommodate inset drawers and hardware.
- Includes two precut 2 x 4 installation cleats.
- The load capacity of these cabinets is greatly dependent on the quality of the installation screws and whether the cabinets are secured into the wall studs. If not secured into two or more studs, using high quality installation screws the cabinet may not support the desired weight.
- Conestoga will not be responsible for cabinet failure due to inadequate installation techniques or materials.

24" High	
WHV2D2124	WHV2D3024
WHV2D2424	WHV2D3324
WHV2D2724	WHV2D3624

Options Key: EXP = Exposed End(s) FL = Flush End(s) FUE = Flush Unexposed End(s) SS = Shaped Side PFD = Prep for False Door
EXT = Extended Stile(s) FT = Flush Toe LTP = Loose Toe Platform SBR = Shaped Bottom Rail LE = Leg Extension
TSS = Toe Space Side OS = Omit Shelving NSH = No Shelf Holes WS = Solid Wood Shelves MI = Matching Interior
DT = Dust Top NB = Natural Finished Bottom PTB = Plywood Toe Backer

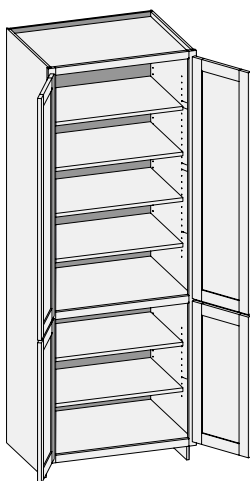
CSVLV - Vanity Linen Vanity Height



Custom Size Ranges
 Single Door Width: 12" – 24"
 Butt Door Width:
 24" – 36"
 Height: 84" – 120"
 Depth: 5-1/2" – 30"

- Lower section aligns with 31-1/2" high Vanity cabinets.
- 84" – 90" high has six shelves.
- 90-1/16" – 96" high has seven shelves.
- 96-1/16" – 108" high has eight shelves.
- 108-1/16" – 120" high has nine shelves.
- Matching specie interior is not available over 96" high. White Birch UV topcoated material will be used.
- When height changes, upper opening height changes. Lower opening height fixed at 24-1/2".
- Specify single or butt doors on custom size cabinets 24" wide.

CSUCR - Vanity Linen Base Height

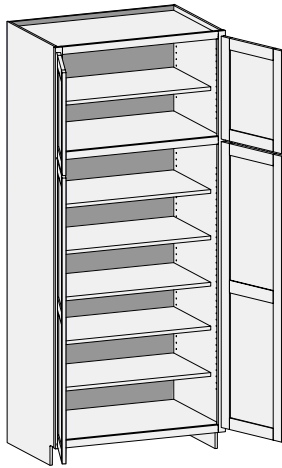


Custom Size Ranges
 Single Door Width: 12" – 24"
 Butt Door Width: 24" – 36"
 Height: 84" – 120"
 Depth: 5-1/2" – 30"

- Lower section aligns with 34-1/2" high Vanity cabinets.
- 84" – 90" high has six shelves.
- 90-1/16" – 96" high has seven shelves.
- 96-1/16" – 108" high has eight shelves.
- 108-1/16" – 120" high has nine shelves.
- Matching specie interior is not available over 96" high. White Birch UV topcoated material will be used.
- When height changes, upper opening height changes. Lower opening height fixed at 27-1/2".
- Specify single or butt doors on custom size cabinets 24" wide.

Options Key: EXP = Exposed End(s) FL = Flush End(s) FUE = Flush Unexposed End(s) SS = Shaped Side PFD = Prep for False Door
 EXT = Extended Stile(s) FT = Flush Toe LTP = Loose Toe Platform SBR = Shaped Bottom Rail LE = Leg Extension
 TSS = Toe Space Side OS = Omit Shelving NSH = No Shelf Holes WS = Solid Wood Shelves MI = Matching Interior
 DT = Dust Top NB = Natural Finished Bottom PTB = Plywood Toe Backer

CSUC - Vanity Utility

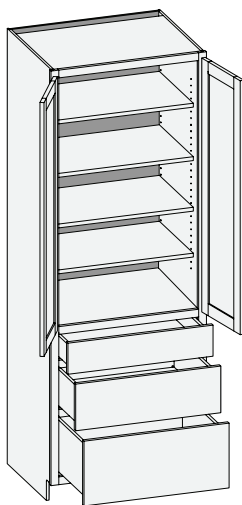


Custom Size Ranges
Single Door Width: 12" – 24"
Butt Door Width: 24" – 36"
Height: 84" – 120"
Depth: 5-1/2" – 30"

- 84" – 90" high has six shelves.
- 90-1/16" – 96" high has seven shelves.
- 96-1/16" – 108" high has eight shelves.
- 108-1/16" – 120" high has nine shelves.
- Matching specie interior is not available over 96" high. White Birch UV topcoated material will be used.
- When height changes, upper opening height changes. Lower opening height fixed at 56".
- Specify single or butt doors on custom size cabinets 24" wide.

Options Key: EXP = Exposed End(s) FL = Flush End(s) FUE = Flush Unexposed End(s) SS = Shaped Side PFD = Prep for False Door
EXT = Extended Stile(s) FT = Flush Toe LTP = Loose Toe Platform SBR = Shaped Bottom Rail LE = Leg Extension
TSS = Toe Space Side OS = Omit Shelving NSH = No Shelf Holes WS = Solid Wood Shelves MI = Matching Interior
DT = Dust Top NB = Natural Finished Bottom PTB = Plywood Toe Backer

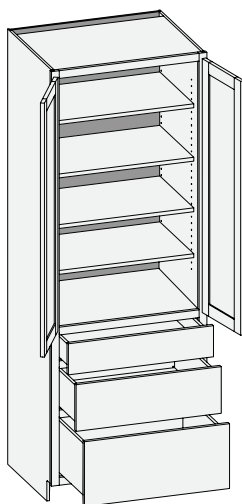
CSVL3V - Vanity Linen Three Drawer Vanity Height



Custom Size Ranges
 Single Door Width: 12" – 24"
 Butt Door Width: 24" – 36"
 Height: 84" – 120"
 Depth: 12", 15", 18", 21"
 24", 27", 30"

- Lower section aligns with 31-1/2" high Vanity cabinets.
- 84" – 90" high has four shelves.
- 90-1/16" – 96" high has five shelves.
- 96-1/16" – 108" high has six shelves.
- 108-1/16" – 120" high has seven shelves.
- Matching specie interior is not available over 96" high. White Birch UV topcoated material will be used.
- When height changes, upper opening height changes. Lower drawer opening heights fixed at 5", 8" and 8-1/2".
- Specify single or butt doors on custom size cabinets 24" wide.

CSU3D - Vanity Linen Three Drawer Base Height

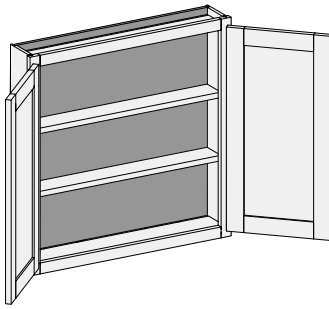


Custom Size Ranges
 Single Door Width: 12" – 24"
 Butt Door Width: 24" – 36"
 Height: 84" – 120"
 Depth: 12", 15", 18", 21"
 24", 27", 30"

- Lower section aligns with 34-1/2" high Vanity cabinets.
- 84" – 90" high has four shelves.
- 90-1/16" – 96" high has five shelves.
- 96-1/16" – 108" high has six shelves.
- 108-1/16" – 120" high has seven shelves.
- Matching specie interior is not available over 96" high. White Birch UV topcoated material will be used.
- When height changes, upper opening height changes. Lower drawer opening heights fixed at 5", 8" and 11-1/2".
- Specify single or butt doors on custom size cabinets 24" wide.

Options Key: EXP = Exposed End(s) FL = Flush End(s) FUE = Flush Unexposed End(s) SS = Shaped Side PFD = Prep for False Door
 EXT = Extended Stile(s) FT = Flush Toe LTP = Loose Toe Platform SBR = Shaped Bottom Rail LE = Leg Extension
 TSS = Toe Space Side OS = Omit Shelving NSH = No Shelf Holes WS = Solid Wood Shelves MI = Matching Interior
 DT = Dust Top NB = Natural Finished Bottom PTB = Plywood Toe Backer

VW/CSW - Vanity Wall

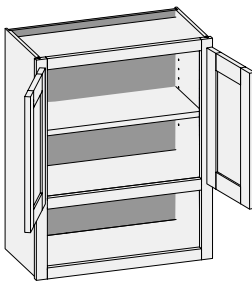


Custom Size Ranges
Width: 9" – 36"
Height: 12" – 48"
Depth: 5-1/2" – 30"

- 12" – 18" high has no shelves.
- 18-1/16" – 24" high has one shelf.
- 24-1/16" – 36" high has two shelves.
- 36-1/16" – 48" high has three shelves.
- Specify single or butt doors on custom size cabinets 24" wide.

30" High – 5-1/2" Deep	
VW1230	VW1830
VW1530	VW2430

VWS/CSVWS - Vanity Wall Shelf w/Butt Doors



Custom Size Ranges
Width: 24" – 36"
Height: 24" – 48"
Depth: 5-1/2" – 12-1/2"

- 8" high bottom opening – fixed.
- Lower section does not match exterior specie unless Matching Interior Option is ordered.
- Specify single or butt doors on custom size cabinets 24" wide.

36" High – 8" Deep
VWS2436.5BD

Options Key: EXP = Exposed End(s) FL = Flush End(s) FUE = Flush Unexposed End(s) SS = Shaped Side PFD = Prep for False Door
EXT = Extended Stile(s) FT = Flush Toe LTP = Loose Toe Platform SBR = Shaped Bottom Rail LE = Leg Extension
TSS = Toe Space Side OS = Omit Shelving NSH = No Shelf Holes WS = Solid Wood Shelves MI = Matching Interior
DT = Dust Top NB = Natural Finished Bottom PTB = Plywood Toe Backer