

Vesta Vanity Cabinet Standard Features and Options

The features below are standard on all Vanity cabinets where the design permits. Standard features can be omitted as needed. The option to omit standard features as well as add design options can be quickly referenced at the bottom of each page in the Vanity Cabinet Section labeled “Vanity Options Key”. For detailed descriptions and images of the options, see Options, Section 20 of this manual. Standard features and options are available on all Vanity cabinets unless specifically noted as **Unavailable Options**.

Edgeband – Our Vanity cabinets sides, tops, bottoms, mid-floors and shelves are edgebanded on front edge only. Interior parts such as uprights or other support members are edgebanded on visible edges. Edgeband color must be specified to either match the case color (standard offering) or door color if applicable (upcharge applies). When Door Matching Edgeband Option is selected the front edges of the sides, top, bottom and mid-floor are edgebanded using the door color. The edgeband on the shelves and interior parts matches the interior case color. Door Matching Edgeband Option available with all Allure DLV, Intrigue TTS, Strata TTS, Vogue TTS, Synchronicity High Gloss and Super Matte colors as well as wood edgeband in Cherry, Hard Maple, Paint Grade, Red Oak, Rift Cut White Oak and Walnut.

5mm Shelf Holes – 5mm shelf holes are pre-drilled on 32mm centers on all cabinets with shelves. **No Shelf Holes** (NSH) and **Omit Shelving** (OS) Options are available on any vanity cabinet with shelves. If both the NSH and OS Options are required, both must be individually specified.

Hinge Hole Drilling – All Vanity cabinets eligible to receive doors will include Blum Frameless INSERTA Hinges and are pre-drilled with 5mm holes to accept the EXPANDO Mounting Plates. A **No Hinge Hole** (NHH) Option is available on Vanity cabinets that would typically include doors. Cabinet hinges can also be omitted, but must be changed from the default Yes to No. The No Hinge Hole Option does not remove hinges; No Hinges must be specified.

Drawer Slide Hole Drilling – All Vanity cabinets that include drawer boxes also include Blum TANDEM Drawer Slides and are pre-drilled with 5mm holes for quick and easy installation. The **No Drawer Slide Hole** (NDSH) Option is available only on cabinets with drawer boxes. Drawer slides can be omitted, but must be changed from the default Yes to No. The No Shelf Holes Option does not automatically remove drawer slides; No Drawer Slides must be specified.

Toe Kick – Most Vanity Base and Vanity Tall cabinets come with a 3-3/4” x 4” Toe Kick Notch standard. Cabinets with a Toe Kick are available with either the **Flush Toe** (FT) and **Square Toe Notch** (STN) Options. The Flush Toe Option removes the toe kick from the cabinet and brings the toe backer flush with the cabinet front edge. The Square Toe Notch Option makes the intersecting corner of the toe notch 90° to aid in toeboard installation.

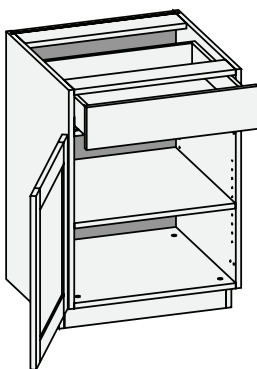
Matching Case Color (MCC) – With the Matching Case Color Option, the door and drawer front color matches the cabinet interior, exterior and edgeband. The Matching Case Color Option is available with most Vanity cabinets and produced in all Intrigue TTS, Strata TTS and Vogue TTS colors.

Loose Toe Platform (LTP) – With the Loose Toe Platform Option, the cabinet height is automatically reduced by 4” and is produced without a toe kick. A 4” platform is provided to achieve the desired finished cabinet height. When ordering Loose Toe Platform enter the desired cabinet height, deductions for the toe platform are calculated by Conestoga. Loose Toe Platform is available with most Vanity cabinets. The Flush Toe and Square Toe Notch Options are not available with Loose Toe Platform.

Vanity Options Key: **FT** = Flush Toe **LTP** = Loose Toe Platform **STN** = Square Toe Notch **MCC** = Matching Case Color **NHH** = No Hinge Holes
NSH = No Shelf Holes **NDSH** = No Drawer Slide Holes

Design Notes:

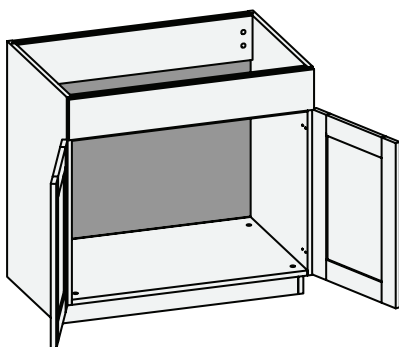
Standard edgeband color matches cabinet interior color (Coastal White, Fog Grey or White Birch). Edgeband that matches doors/drawer fronts is available and must be specified. Upcharge applies. Use fillers when installing cabinets adjacent to walls and other cabinets to ensure adequate clearance for doors and drawers. Conestoga recommends that exposed ends be capped with 19mm thick applied decorative end panels (optional and must be specified). When this treatment is used, adjust cabinet width(s) accordingly.

VB/CSB - Vanity Base

Custom Size Ranges
 Width: 12" – 24"
 Height: 31-1/2" – 42"
 Depth: 12", 13", 15", 16",
 18", 21", 24", 27",
 30"

- When height changes, lower opening height changes.
- Upper opening height fixed at 5".
- Specify single or butt doors on custom size cabinets 24" wide.

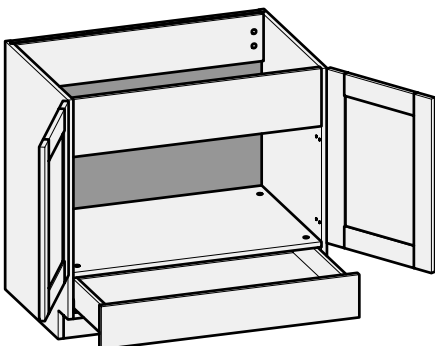
21" Deep	
31-1/2" High	34-1/2" High
VB1231.5	VB1234.5
VB1531.5	VB1534.5
VB1831.5	VB1834.5
VB2131.5	VB2134.5

VS/CSBS - Vanity Sink w/Butt Doors

Custom Size Ranges
 Width: 24" – 36"
 Height: 31-1/2" – 42"
 Depth: 18" – 30"

- False drawer front.
- No drawer box, shelf support holes or shelf with sink units.
- When height changes, lower opening height changes.
- Upper drawer front height fixed at 5-15/16".
- Specify single or butt doors on custom size cabinets 24" wide.

21" Deep	
31-1/2" High	34-1/2" High
VS2431.5BD	VS2434.5BD
VS2731.5BD	VS2734.5BD
VS3031.5BD	VS3034.5BD
VS3331.5BD	VS3334.5BD
VS3631.5BD	VS3634.5BD

VS RV/CSVSRV - Vanity Sink Reverse w / Butt Doors

Custom Size Ranges
 Width: 24" – 36"
 Height: 31-1/2" – 42"
 Depth: 12", 13", 15", 16",
 18", 21", 24", 27", 30"

- When height changes, upper opening height changes.
- Lower drawer front height fixed at 5-15/16".

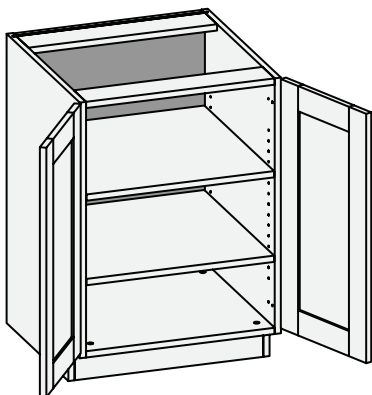
21" Deep	
31-1/2" High	34-1/2" High
VS RV2431.5BD	VS RV2434.5BD
VS RV3031.5BD	VS RV3034.5BD
VS RV3631.5BD	VS RV3634.5BD

Vanity Options Key: FT = Flush Toe LTP = Loose Toe Platform STN = Square Toe Notch MCC = Matching Case Color NHH = No Hinge Holes
 NSH = No Shelf Holes NDSH = No Drawer Slide Holes

Design Notes:

Standard edgeband color matches cabinet interior color (Coastal White, Fog Grey or White Birch). Edgeband that matches doors/drawer fronts is available and must be specified. Upcharge applies. Use fillers when installing cabinets adjacent to walls and other cabinets to ensure adequate clearance for doors and drawers. Conestoga recommends that exposed ends be capped with 19mm thick applied decorative end panels (optional and must be specified). When this treatment is used, adjust cabinet width(s) accordingly.

VBF/CSBFD - Vanity Base Full Door

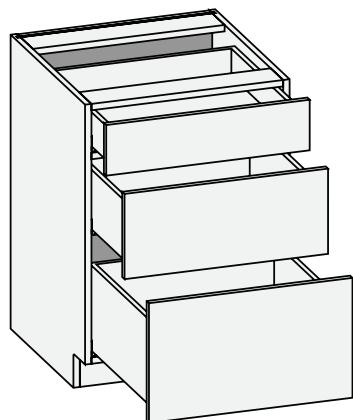


Custom Size Ranges
Single Door Width: 9" – 24"
Butt Door Width: 24" – 36"
Height: 10" – 42"
Single Door Depth: 12" – 30"
Butt Door Depth: 12" – 30"

- 10" – 22" high has no shelves.
- 22-1/16" – 28" high has one shelf.
- 28-1/16" – 40" high has two shelves.
- 40-1/16" – 48" high has three shelves.
- Specify single or butt doors on custom size cabinets 24" wide.

Single Door Cabinet – 21" Deep		Butt Door Cabinets – 21" Deep	
31-1/2" High	34-1/2" High	31-1/2" High	34-1/2" High
VBF1831.5	VBF1834.5	VBF2431.5BD	VBF2434.5BD
		VBF2731.5BD	VBF2734.5BD
		VBF3031.5BD	VBF3034.5BD
		VBF3631.5BD	VBF3634.5BD

V3D/CSB3D - Vanity Three Drawer

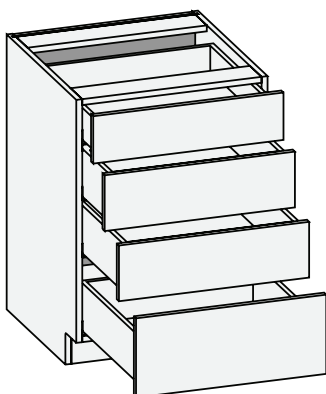


Custom Size Ranges
Width: 12" – 39"
Height: 31-1/2" – 34-1/2"
Depth: 12", 13", 15", 16",
18", 21", 24", 27",
30"

- When height changes, lower drawer front height changes.
- Upper and middle drawer front heights fixed at 5-15/16" and 10".

21" Deep	
31-1/2" High	34-1/2" High
V3D1231.5	V3D1234.5
V3D1531.5	V3D1534.5
V3D1831.5	V3D1834.5
V3D2131.5	V3D2134.5
V3D2431.5	V3D2434.5

V4D/CSB4D - Vanity Four Drawer



Custom Size Ranges
Width: 12" – 39"
Height: 31-1/2" – 34-1/2"
Depth: 12", 13", 15", 16",
18", 21", 24", 27",
30"

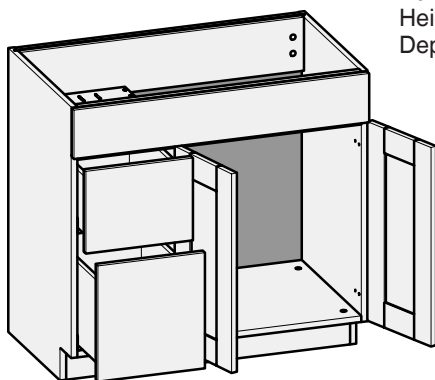
- When height changes, lower drawer height changes.
- Upper drawer front heights fixed at 5-15/16".
- Middle drawer front heights fixed at 7".

21" Deep	
31-1/2" High	34-1/2" High
V4D1231.5	V4D1234.5
V4D1531.5	V4D1534.5
V4D1831.5	V4D1834.5
V4D2131.5	V4D2134.5
V4D2431.5	V4D2434.5

Vanity Options Key: FT = Flush Toe LTP = Loose Toe Platform STN = Square Toe Notch MCC = Matching Case Color NHH = No Hinge Holes
NSH = No Shelf Holes NDSH = No Drawer Slide Holes

Design Notes:

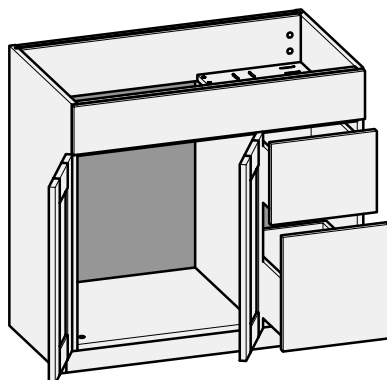
Standard edgeband color matches cabinet interior color (Coastal White, Fog Grey or White Birch). Edgeband that matches doors/drawer fronts is available and must be specified. Upcharge applies. Use fillers when installing cabinets adjacent to walls and other cabinets to ensure adequate clearance for doors and drawers. Conestoga recommends that exposed ends be capped with 19mm thick applied decorative end panels (optional and must be specified). When this treatment is used, adjust cabinet width(s) accordingly.

VCL/CSVCL - Vanity Combination Left

Custom Size Ranges
 Single Door Width: 30" – 36"
 Butt Door Width: 36" – 48"
 Height: 31-1/2" – 34-1/2"
 Depth: 12", 13", 15", 16",
 18", 21", 24", 27",
 30"

- False top drawer front.
- When height changes, lower opening heights change.
- Upper and middle drawer front heights fixed at 5-15/16" and 10".
- When width changes, door and false drawer opening changes.
- Lower drawer front widths fixed at 13".
- Specify single or butt doors on custom size cabinets 36" wide.
- When ordering a cabinet with a single door the standard hinge location is on the right using the standard Full Access Cabinetry (FAC) hinges. For applications requiring the door to be hinged on the left, omit hinges from cabinet and order FAC Partial Overlay Hinges (part#2103675).

Single Door Cabinets – 21" Deep		Butt Door Cabinets – 21" Deep	
31-1/2" High	34-1/2" High	34-1/2" High	34-1/2" High
VCL3031.5	VCL3034.5	VCL4231.5BD	VCL4234.5BD
VCL3331.5	VCL3334.5	VCL4831.5BD	VCL4834.5BD
VCL3631.5	VCL3634.5		

VCR/CSVCR - Vanity Combination Right

Custom Size Ranges
 Single Door Width: 30" – 36"
 Butt Door Width: 36" – 48"
 Height: 31-1/2" – 34-1/2"
 Depth: 12", 13", 15", 16",
 18", 21", 24", 27",
 30"

- False top drawer front.
- When height changes, lower opening heights change.
- Upper and middle drawer front heights fixed at 5-15/16" and 10".
- When width changes, door and false drawer opening changes.
- Lower drawer front widths fixed at 13".
- Specify single or butt doors on custom size cabinets 36" wide.
- When ordering a cabinet with a single door the standard hinge location is on the left using the standard Full Access Cabinetry (FAC) hinges. For applications requiring the door to be hinged on the right, omit hinges from cabinet and order FAC Partial Overlay Hinges (part#2103675).

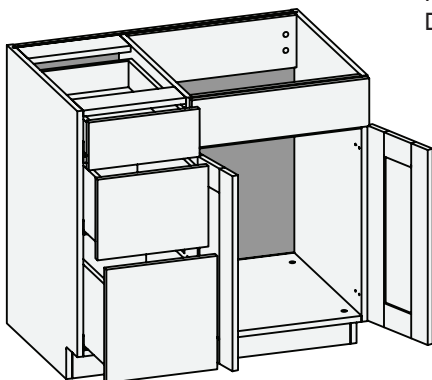
Single Door Cabinets – 21" Deep		Butt Door Cabinets – 21" Deep	
31-1/2" High	34-1/2" High	34-1/2" High	34-1/2" High
VCR3031.5	VCR3034.5	VCR4231.5BD	VCR4234.5BD
VCR3331.5	VCR3334.5	VCR4831.5BD	VCR4834.5BD
VCR3631.5	VCR3634.5		

Vanity Options Key: FT = Flush Toe LTP = Loose Toe Platform STN = Square Toe Notch MCC = Matching Case Color NHH = No Hinge Holes
 NSH = No Shelf Holes NDSH = No Drawer Slide Holes

Design Notes:

Standard edgeband color matches cabinet interior color (Coastal White, Fog Grey or White Birch). Edgeband that matches doors/drawer fronts is available and must be specified. Upcharge applies. Use fillers when installing cabinets adjacent to walls and other cabinets to ensure adequate clearance for doors and drawers. Conestoga recommends that exposed ends be capped with 19mm thick applied decorative end panels (optional and must be specified). When this treatment is used, adjust cabinet width(s) accordingly.

VC3DL/CSVC3DL – Vanity Combo Three Drawer Left

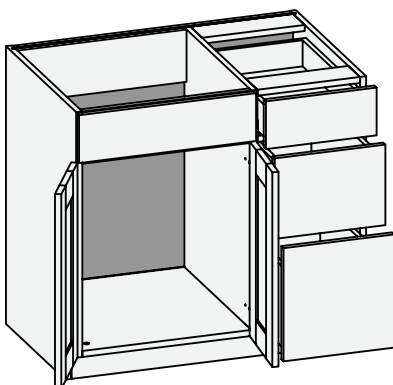


Custom Size Ranges
Width: 36" – 48"
Height: 31-1/2" – 34-1/2"
Depth: 12", 13", 15", 16",
18", 21", 24", 27",
30"

- When width changes, door opening remains fixed at 21".
- When height changes door and lower drawer opening heights change.
- Upper and middle drawer front heights fixed at 5-15/16" and 10".
- Specify single or butt doors on custom size cabinets.
- Standard hinge location is on the right using the standard Full Access Cabinetry (FAC) hinges. For applications requiring the door to be hinged on the left, omit hinges from cabinet and order FAC Partial Overlay Hinges (part#2103675).

Single Door Cabinets – 21" Deep		Butt Door Cabinets – 21" Deep	
31-1/2" High	34-1/2" High	31-1/2" High	34-1/2" High
VC3DL3631.5	VC3DL3634.5	VC3DL3631.5BD	VC3DL3634.5BD
VC3DL3931.5	VC3DL3934.5	VC3DL3931.5BD	VC3DL3934.5BD
VC3DL4231.5	VC3DL4234.5	VC3DL4231.5BD	VC3DL4234.5BD
VC3DL4531.5	VC3DL4534.5	VC3DL4531.5BD	VC3DL4534.5BD
VC3DL4831.5	VC3DL4834.5	VC3DL4831.5BD	VC3DL4834.5BD

VC3DR/CSVC3DR – Vanity Combo Three Drawer Right



Custom Size Ranges
Width: 36" – 48"
Height: 31-1/2" – 34-1/2"
Depth: 12", 13", 15", 16",
18", 21", 24", 27",
30"

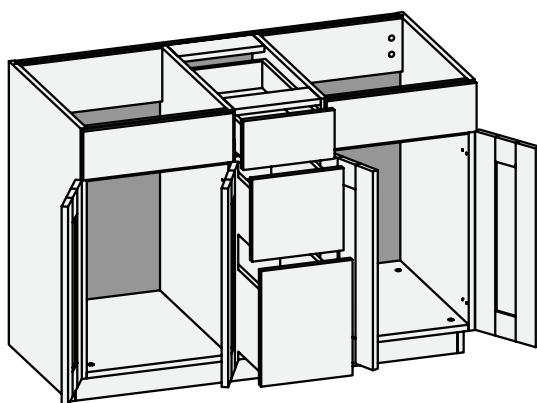
- When width changes, door opening remains fixed at 21".
- When height changes door and lower drawer opening height changes.
- Upper and middle drawer heights remain fixed at 5-15/16" and 10".
- Specify single or butt doors on custom size cabinets.
- Standard hinge location is on the left using the standard Full Access Cabinetry (FAC) hinges. For applications requiring the door to be hinged on the right, omit hinges from cabinet and order FAC Partial Overlay Hinges (part#2103675).

Single Door Cabinets – 21" Deep		Butt Door Cabinets – 21" Deep	
31-1/2" High	34-1/2" High	31-1/2" High	34-1/2" High
VC3DR3631.5	VC3DR3634.5	VC3DR3631.5	VC3DR3634.5
VC3DR3931.5	VC3DR3934.5	VC3DR3931.5	VC3DR3934.5
VC3DR4231.5	VC3DR4234.5	VC3DR4231.5	VC3DR4234.5
VC3DR4531.5	VC3DR4534.5	VC3DR4531.5	VC3DR4534.5
VC3DR4831.5	VC3DR4834.5	VC3DR4831.5	VC3DR4834.5

Vanity Options Key: FT = Flush Toe LTP = Loose Toe Platform STN = Square Toe Notch MCC = Matching Case Color NHH = No Hinge Holes
NSH = No Shelf Holes NDSH = No Drawer Slide Holes

Design Notes:

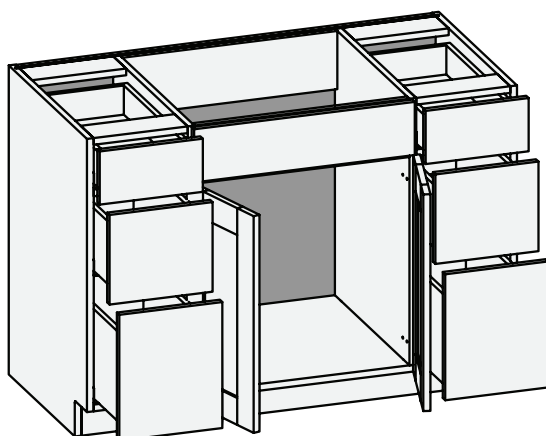
Standard edgeband color matches cabinet interior color (Coastal White, Fog Grey or White Birch). Edgeband that matches doors/drawer fronts is available and must be specified. Upcharge applies. Use fillers when installing cabinets adjacent to walls and other cabinets to ensure adequate clearance for doors and drawers. Conestoga recommends that exposed ends be capped with 19mm thick applied decorative end panels (optional and must be specified). When this treatment is used, adjust cabinet width(s) accordingly.

VC3D/CSVC3D – Vanity Combo Three Drawer w/Butt Doors


Custom Size Ranges
 Width: 48" – 72"
 Height: 31-1/2" – 34-1/2"
 Depth: 12", 13", 15, 16",
 18", 21", 24", 27", 30"

- Two false top drawer fronts, one functional top drawer.
- When height changes, doors and lower drawer front height changes.
- Upper and middle drawer front heights fixed at 5-15/16" and 10".
- When width changes, door openings and false drawer fronts change. Drawer openings remain fixed at 10-1/2" wide.

21" Deep	
31-1/2" High	34-1/2" High
VC3D6031.5BD	VC3D6034.5BD

VC6D/CSVC6D – Vanity Combo Six Drawer w/Butt Doors


Custom Size Ranges
 Width: 48" – 72"
 Height: 31-1/2" – 34-1/2"
 Depth: 12", 13", 15, 16",
 18", 21", 24", 27", 30"

- One false top drawer front, two functional top drawers.
- When height changes, lower drawer front height changes.
- Upper and middle drawer front heights fixed at 5-15/16" and 10".
- When width changes, door opening and false drawer front changes. Drawer openings remain fixed at 10-1/2" wide.

21" Deep	
31-1/2" High	34-1/2" High
VC6D4831.5BD	VC6D4834.5BD
VC6D6031.5BD	VC6D6034.5BD

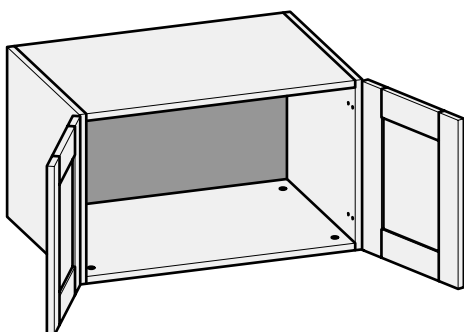
Vanity Options Key: FT = Flush Toe LTP = Loose Toe Platform STN = Square Toe Notch MCC = Matching Case Color NHH = No Hinge Holes
 NSH = No Shelf Holes NDSH = No Drawer Slide Holes

Design Notes:

Standard edgeband color matches cabinet interior color (Coastal White, Fog Grey or White Birch). Edgeband that matches doors/drawer fronts is available and must be specified. Upcharge applies. Use fillers when installing cabinets adjacent to walls and other cabinets to ensure adequate clearance for doors and drawers. Conestoga recommends that exposed ends be capped with 19mm thick applied decorative end panels (optional and must be specified). When this treatment is used, adjust cabinet width(s) accordingly.

WHV/CSWHV - Wall Hung Vanity

Custom Size Ranges
Single Door Width: 21" – 24"
Butt Door Width: 24" – 36"
Height: 18" – 24"
Depth: 18" - 21"

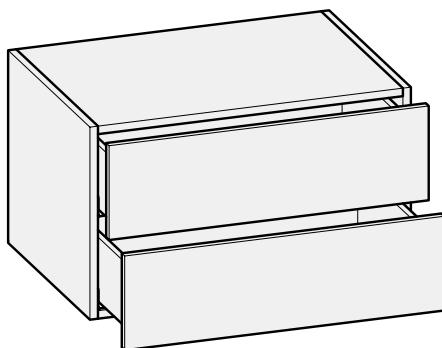


- The load capacity of these cabinets is greatly dependent on the quality of the installation screws and whether the cabinets are secured into the wall studs. If not secured into two or more studs, using high quality installation screws the cabinet may not support the desired weight.
- Conestoga will not be responsible for cabinet failure due to inadequate installation techniques or materials.
- Specify single or butt doors on custom size cabinets 24" wide.

Single Door Cabinets 21" Deep	Butt Door Cabinets 21" Deep
24" High	24" High
WHV2124	WHV2424BD
WHV2424	WHV2724BD
	WHV3024BD
	WHV3324BD
	WHV3624BD

WHV2D/CSWHV2D - Wall Hung Vanity 2 Drawers

Custom Size Ranges
Door Width: 21" – 36"
Height: 18" – 24"
Depth: 18" - 21"



- The load capacity of these cabinets is greatly dependent on the quality of the installation screws and whether the cabinets are secured into the wall studs. If not secured into two or more studs, using high quality installation screws the cabinet may not support the desired weight.
- Conestoga will not be responsible for cabinet failure due to inadequate installation techniques or materials.
- Drawer front heights are equal.

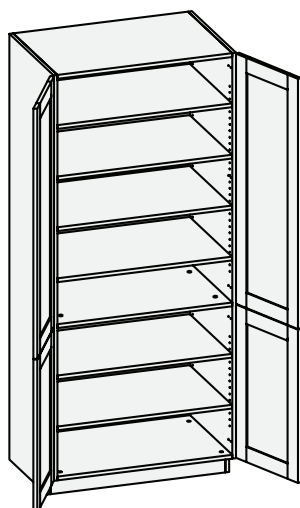
21" Deep	
24" High	
WHV2D2124	WHV2D3024
WHV2D2424	WHV2D3324
WHV2D2724	WHV2D3624

Vanity Options Key: FT = Flush Toe LTP = Loose Toe Platform STN = Square Toe Notch MCC = Matching Case Color NHH = No Hinge Holes
NSH = No Shelf Holes NDSH = No Drawer Slide Holes

Design Notes:

Standard edgeband color matches cabinet interior color (Coastal White, Fog Grey or White Birch). Edgeband that matches doors/drawer fronts is available and must be specified. Upcharge applies. Use fillers when installing cabinets adjacent to walls and other cabinets to ensure adequate clearance for doors and drawers. Conestoga recommends that exposed ends be capped with 19mm thick applied decorative end panels (optional and must be specified). When this treatment is used, adjust cabinet width(s) accordingly.

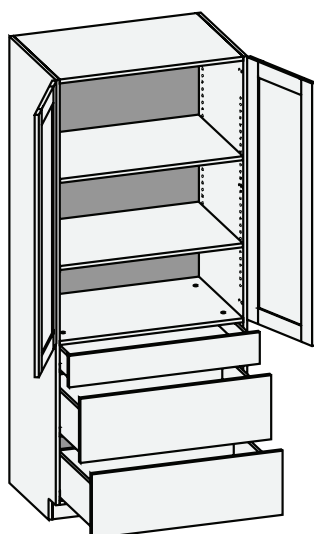
CSUCR - Vanity Linen Base Height



Custom Size Ranges
 Single Door Width: 12" – 24"
 Butt Width: 24" – 36"
 Height: 84" – 96"
 Depth: 8" – 30"

- Lower section below fixed shelf aligns with 34-1/2" high Vanity cabinets.
- 84" – 90" high has six shelves.
- 90-1/16" – 96" high has seven shelves.
- When height changes, upper opening height changes.
- Lower opening height fixed at 29-5/16".
- Specify single or butt doors on custom size cabinets 24" wide.
- Separate 4" high toe platform is available with all cabinet heights.

CSU3D - Vanity Linen Three Drawer Base Height



Custom Size Ranges
 Single Door Width: 12" – 24"
 Butt Door Width: 24" – 36"
 Height: 84" – 96"
 Depth: 12", 13", 15", 16",
 18", 21", 24", 27", 30"

- When height changes, upper opening height changes.
- Lower section aligns with 34-1/2" high Vanity cabinets.
- Drawer front heights fixed at 5-15/16", 10" and 14-1/16".
- 84" – 90" high has four shelves.
- 90-1/16" – 96" high has five shelves.
- Specify single or butt doors on custom size cabinets 24" wide.
- Separate 4" high toe platform is available with all cabinet heights.

Vanity Options Key: FT = Flush Toe LTP = Loose Toe Platform STN = Square Toe Notch MCC = Matching Case Color NHH = No Hinge Holes
 NSH = No Shelf Holes NDSH = No Drawer Slide Holes

Design Notes:

Standard edgeband color matches cabinet interior color (Coastal White, Fog Grey or White Birch). Edgeband that matches doors/drawer fronts is available and must be specified. Upcharge applies. Use fillers when installing cabinets adjacent to walls and other cabinets to ensure adequate clearance for doors and drawers. Conestoga recommends that exposed ends be capped with 19mm thick applied decorative end panels (optional and must be specified). When this treatment is used, adjust cabinet width(s) accordingly.